

We are proposing a change in your area

Reference	<p>TR173-22 Newtown to Wellington City – Proposed interim cycle and bus lanes and parking changes (Amended as per Planning and Environment Committee meeting September 15th 2022)</p>
Why we are proposing the change	<ul style="list-style-type: none"> • Wellington City Council are proposing interim improvements so it's safer, easier, and quicker for people to bus, bike, or scoot from Newtown to the city. • In March 2022, Council approved all the primary and secondary routes for the Wellington Bike Network Plan, Paneke Pōneke. The Newtown to city route was identified as a primary route in this network and was identified for early delivery. • This is a key public transport route for the city, connecting Newtown to the city and beyond to the southern and eastern suburbs. • This route is also one of the two priority urban growth areas for the city and can support significant new housing development. It has also been identified as the Mass Rapid Transport (MRT) route for Let's Get Wellington Moving.
What we'd like to do	<p>a) Resolve the Riddiford Street and surrounding side streets section installed March 2022.</p> <ul style="list-style-type: none"> • Resolve the separated bike lane installed on Riddiford Street. Extending on the west side of Riddiford Street, between Mein Street and the John Street / Adelaide Road intersection and on the east side of Riddiford Street from Mein Street to the Hospital Carpark entrance. • Removing 37 P60 parking spaces, three P10 parking spaces and three taxi stand parking spaces. • Resolve the 24/7 north bound bus lane installed on the western side of Riddiford Street beginning 50m North of Mein Street and continuing to the John Street / Adelaide Road intersection. • Resolve the ability for Buses and Cyclist only to continue straight from the left-hand lane from Riddiford Street to Adelaide Road. • Resolve the alteration of 11 unrestricted parking spaces on the north side of Mein Street to P120 time restricted parking spaces. • Resolve the alteration of six P60 parking spaces on the south side of Mein Street to P120 time restricted parking spaces. • Resolve the alteration of 8 parking spaces on the south side of Mein Street to P10 pick up and drop off 8:30am-9am and 2:45pm -3:15pm Monday – Friday during school terms only, P120 at all other times. • Resolve the alteration of two P5 spaces on the south side of Hall Street to P10 time restricted parking spaces. <p>b) Adapt the current layout on Riddiford Street and surrounding streets based on feedback received to date.</p> <ul style="list-style-type: none"> • Install three P30 parking spaces on the north side of Hall Street near the Riddiford Street intersection. • Remove six P60 parking spaces on Riddiford Street outside Newtown School to cater for the proposed changes to the intersection of Riddiford Street at Mein Street and allow for a safe merge between cyclist and vehicles at the end of the separated cycle facility. • Alter 3 parks on east side of Riddiford Street to P10 pick up and drop off 8:30am-9am and 2:45pm-3:15pm Monday – Friday during School terms only, P60 at all other times.

c) Change Adelaide Road and surrounding side streets from John/ Riddiford Street intersection to the Basin Reserve at Rugby Street.

- Install a separated bike lane on the east side of Riddiford connecting to the existing section, extending it from the Hospital carpark entrance to the John Street/ Adelaide Road intersection. Removing six P15 Monday – Sunday 8am – 5pm, P30 at all other time parks and one P10 loading zone park.
- Install a P10 loading Zone, overnight 7pm-7am only park on the east side of Riddiford Street near the John/ Adelaide Road intersection.
- Install a separated bike lane on both sides of Adelaide Road. Extending on the west side of Adelaide Road, from Hospital Road to the Basin Reserve at Rugby Street and on the east side of Adelaide Road from the John Street/ Adelaide Road intersection to the Girton Terrace intersection.
- Resolve a 33-meter section of shared path on the western side of Adelaide Road at the Rugby Street intersection to connect people on bikes to the toucan crossing to access the Basin Reserve or to connect to the separated cycle facility up Rugby Street to Tasman Street.
- Removing from the west side of Adelaide Road, 23 Coupon parking spaces 9am-6pm Monday – Friday, 13 P60 parking spaces and three P30 parking spaces.
- Removing from the east side of Adelaide Road 27 Coupon parking spaces 8am-4pm Monday – Friday and two P30 Loading zone spaces.
- Alter two coupon parking spaces on the north side of Drummond Street near the Adelaide Road intersection to two P10 parking spaces.
- Alter two unrestricted parking spaces on the north side of Broomhedge Street near the Adelaide Road intersection to a 8am-3pm P10 Loading Zone Monday-Friday, and P120 parking spaces all other times.
- Alter two coupon parking spaces on Douglas Street near the Adelaide Road intersection to two P120 parking spaces.
- Install 24/7 bus lanes on both sides of Adelaide Road. Extending on the west side of Adelaide Road from the Riddiford Street / John Street intersection to the Basin Reserve at Rugby Street and on the east side of the road from Hospital Road to the Basin Reserve at Rugby Street.
- Remove the existing bus stop no.7016 on Adelaide Road outside no. 148 near the intersection of Hospital Road.
- Remove the existing bus stop no.6016 on Adelaide Road outside no. 179 near the intersection of John Street/ Riddiford Street.
- Relocate the existing bus stop no.7015 on Adelaide Road outside no. 80 to outside no.114 near the intersection of Drummond Street.

d) Change Kent and Cambridge Terrace and surrounding side streets from the Basin Reserve to the Waterfront at Cable Street.

- Resolve a 40-meter section of shared path from the Basin Reserve entrance at Buckle Street to the first turn around bay between Kent and Cambridge Terrace.
- Install a bi-directional bike lane against the median island along Cambridge Terrace from the Basin Reserve to the Courtenay Place intersection, crossing there over to the eastern kerb line on Kent Terrace to the eastern kerb line until it reaches the waterfront at Cable Street, Oriental Parade intersection.

We are proposing a change in your area

- Resolve a shared path on Cable Street and Oriental Parade, connecting the Newtown to city bike lane to the Oriental Parade bike lane and the Wellington Waterfront shared zone that currently ends at Barnett Street.
- Alter the existing bus lane on Cambridge Terrace from Barker Street to Courtenay Place from 7am-9am Monday – Friday to 7am-9am and 4pm-6pm Monday – Friday.
- Install a “No Right Turn” from Cambridge Terrace to Pirie Street at the Vivian Street intersection.
- Remove 44 metered parking spaces along the east side of Cambridge Terrace and 12 taxi stand spaces.
- Alter nine P60 parking spaces on the west side of Cambridge Terrace between Barker Street and Fifeshire Avenue to six P10 loading zone spaces and three metered parking spaces.
- Alter two metered parking spaces on the west side of Cambridge Terrace near Alpha Street to taxi stand spaces.
- Alter the existing P10 loading zone on Cambridge Terrace near Alpha Street to Bus layover parking 7am-9am, 3pm-7pm Monday – Friday, P10 loading all other times.
- Alter the bus lane on the eastern side of Kent Terrace from Elizabeth Street to the Basin Reserve from 4-6pm Monday – Friday to 7am- 9am and 4pm-6pm Monday – Friday.
- Install eight metered parking spaces on the western side of Kent Terrace against the two closed turn around bays between Kent and Cambridge Terrace.
- Alter three metered parking spaces on the eastern side of Kent Terrace outside no.16 to three taxis stand parking spaces.
- Remove two bus parking layover spaces on the west side of Kent Terrace near the intersection of Courtenay Place.
- Remove four metered parking spaces on the east side of Kent Terrace outside no.2
- Remove two loading zone parking spaces on the east side of Kent Terrace outside no.2
- Remove two metered parking spaces on the west side of Kent Terrace at the intersection of Oriental Parade.
- Remove three metered parking spaces on the east side of Oriental Parade slip lane near the intersection of Cable Street.
- Remove four residents parking spaces on the west side of Oriental Parade slip lane near the intersection of Cable Street.
- Alter the existing five metered parking spaces on the east side of the Oriental Parade slip outside no. 60 to five residents parking spaces.
- Alter two P60 parking spaces on the east side of Roxburgh Street near the Majoribanks Street intersection to two P30 Loading Zone spaces.
- Alter two loading zone spaces on the west side of Roxburgh Street near the Majoribanks Street intersection to two P60 parking spaces.

We are proposing a change in your area

<p>Impact</p>	<ul style="list-style-type: none"> • Net parking impact: <ul style="list-style-type: none"> - Removal of 54 coupon parking spaces - Removal of 42 metered parking spaces. - Removal of 53 time restricted parking spaces. - Removal of 10 taxis stand parking spaces - Addition of three loading zone parking spaces - Additional one residents parking space. • The Newtown to city route is part of the southern connection from Island Bay and will make it safer for many more people to bike/scoot between Wellington Hospital and the waterfront. New bus lanes and extended hours will also mean quicker journeys for people taking the bus. • With bike and bus trips made safer, faster and easier this project will provide improved transport options between Newtown and the City, freeing up space for people who need to drive.
<p>Location – where we propose to make the change</p>	<p>Riddiford Street, Adelaide Road, Cambridge and Kent Terrace, Newtown– from Mein Street intersection outside Wellington Hospital to the Wellington Waterfront</p>
<p>How this relates to the parking policy</p>	<ul style="list-style-type: none"> • This route is a key transport route and is therefore prioritised for the safe and efficient movement of people and goods. With significant urban development planned along this corridor, more efficient use of street space along this route is critical to provide transport choices for existing and new residents that will be living in this area. • These changes have been designed to facilitate a shift to using active (e.g., Walking and cycling) and public transport through parking management and the re-allocation of road space • A parking management plan was undertaken to inform the design of these changes and feedback from the community has subsequently been incorporated into the proposed parking changes • As outlined in the Parking Policy 2020, short term and residents parking has been prioritised over commuter parking which is the lowest priority for road space allocation.
<p>Additional Information</p>	<ul style="list-style-type: none"> • This Newtown to City project is a key initiative to deliver on several strategic outcomes for the city, including the Bus Priority Action Plan, The Spatial Plan, Te Atakura and Paneke Pōneke plan for a citywide network of connected bike/scooter routes. • The improvements are being made using lower cost, adaptable materials that can be tweaked based on public feedback, and data, once these initial installations are in place. • Designs were developed by technical experts and with input from a technical working group to ensure the project delivers on its objectives without compromising road safety, within a constrained road corridor. Engagement with key stakeholders and the community happened in parallel and resulted in design tweaks. Over 1200 pieces of design feedback have been considered to date.

We are proposing a change in your area

	<ul style="list-style-type: none"> • The objectives of this project are to: <ul style="list-style-type: none"> - Increase the percentage of people travelling along these streets on bikes and buses - improve the safety and perceived safety of people walking and cycling, - improve the diversity of people involved in the consultation process and travelling by bike - decrease the time taken to deliver strategic transport projects. • The Bus Priority Action Plan identified there are over 10,000 bus passengers on this route daily. Extensive delays are experienced along Riddiford and Cambridge Terrace with bus stop to stop speeds reduced to 10-20km/hr at times. • This has been confirmed as the Mass Rapid Transit route for <i>Let's Get Wellington Moving</i> and the programme will be delivering transformational change in the future. Community feedback and insights gathered on these proposed interim improvements will feed into future design processes. • This project is part of delivering a connected bike route to Island Bay, and interim improvements on the next section of the route are likely to commence planning work later in the year. • Baseline data collected along this route indicates that there are currently 1090 trips made per day by bike along this route. A baseline survey indicated that 70% of people felt this route does not currently provide for active modes. • Averages daily bus passenger number – 10,000+ (Newtown to city). • Average daily traffic count - Cambridge Terrace 11,481, Adelaide 22,017, Riddiford 20,260. • Average daily cycle count – 1090 • Annual parking revenue impact - loss of \$532k. • 194 crashes have been recorded in police crash database in the last 5 years. 18 were involving people on bikes and 13 involved people walking. • To view an electronic copy of the report will be available on the Council's website from 9.00am Thursday 11th August 2022 at transportprojects.org.nz/newtown or you can call (04) 499 4444 and we will send one out to you. • For more information about this projects, including the background documents to this proposal, visit www.transportprojects.org.nz/newtown
<p>Feedback</p>	<ul style="list-style-type: none"> • If you would like to provide us with specific feedback, which will be added to the Traffic Resolution following consultation and made public in full, you can do so by filling out an online submission form, downloading a printable submission form on transportprojects.org.nz/newtown or emailing us at newtowntocity@wcc.govt.nz • Please note if you are giving feedback the consultation period opens at 9.00 am Thursday 11th August 2022 and finishes at 5.00 pm Wednesday 31st August 2022.
	<ul style="list-style-type: none"> • What we do with your personal information: All submissions (including your name, but not contact details) are provided in their entirety to elected members and made available to the public on our website and at our office. Personal information (including contact details) will also be used for the administration of the consultation process including

We are proposing a change in your area

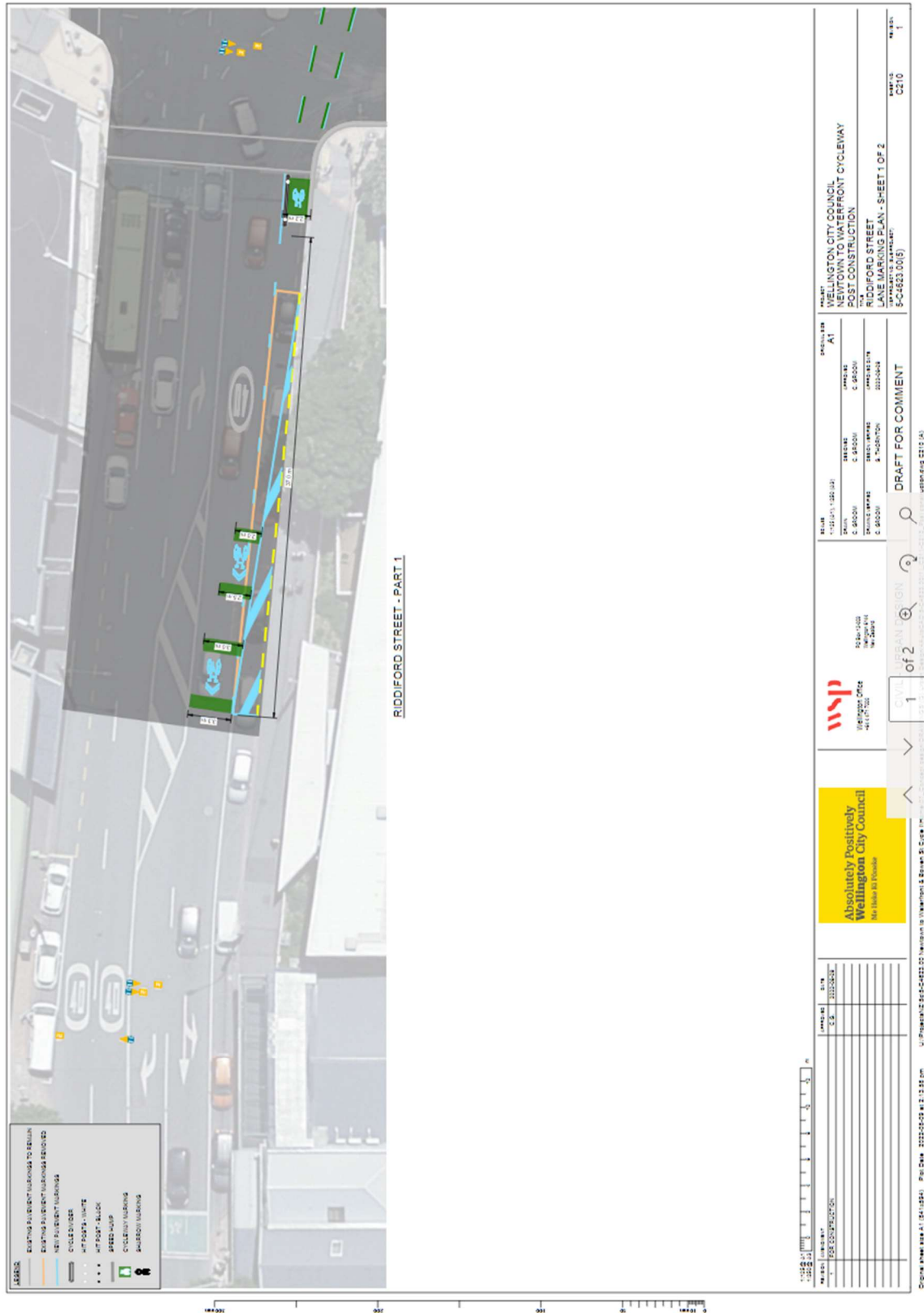
Absolutely Positively
Wellington City Council

Me Heke Ki Pōneke

	informing you of the outcome of the consultation. All information collected will be held by Wellington City Council, 113 The Terrace, Wellington, with submitters having the right to access and correct personal information.
Next Steps	<ol style="list-style-type: none">1. Feedback collated by Friday 9th September 2022.2. The proposal will go to the Planning and Environment Committee on Thursday 15th September 2022.3. If approved, the proposal will be installed from September to December 2022.

We are proposing a change in your area

Traffic Resolution Plan: TR173-22 Newtown to Wellington City– Proposed cycle and bus lanes (from South (Riddiford St at Mein St) to North)

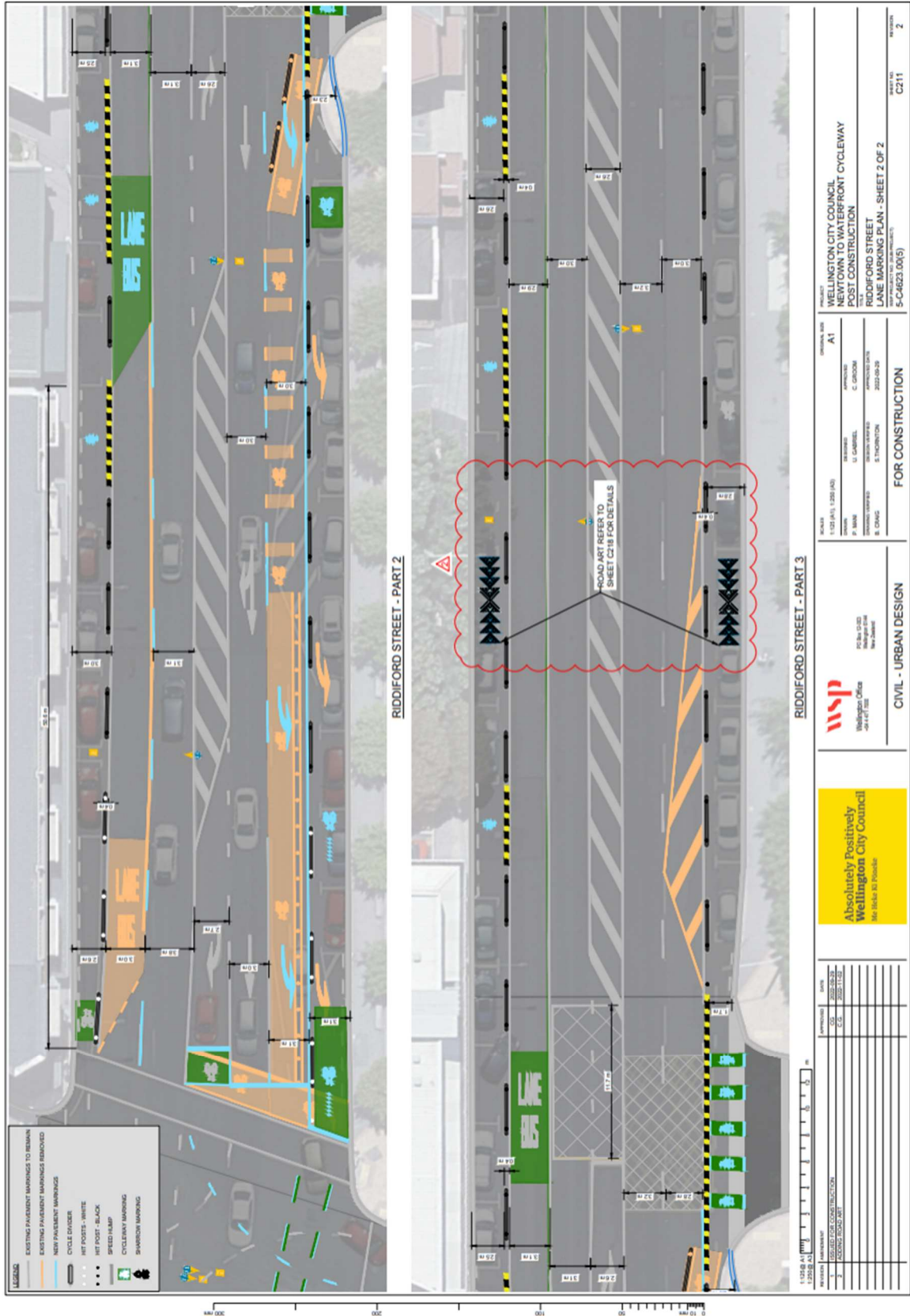


We are proposing a change in your area

Absolutely Positively
Wellington City Council

Me Heke Ki Pōneke

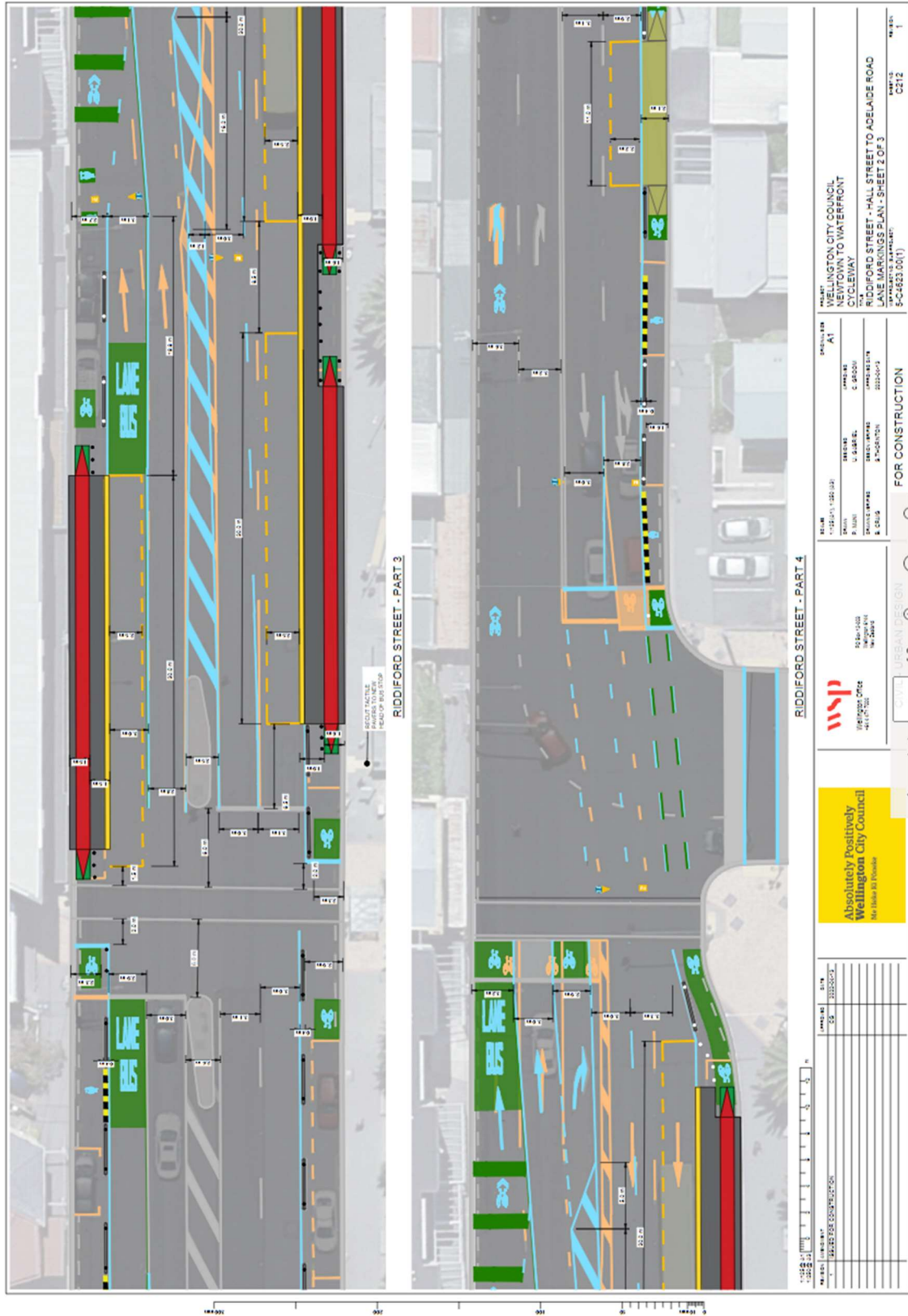
Traffic Resolution Plan: TR173-22 Newtown to Wellington City– Proposed cycle and bus lanes (from South to North) (Amended as per Planning and Environment Committee meeting September 15th 2022)



We are proposing a change in your area

Absolutely Positively
Wellington City Council
Me Heke Ki Pōneke

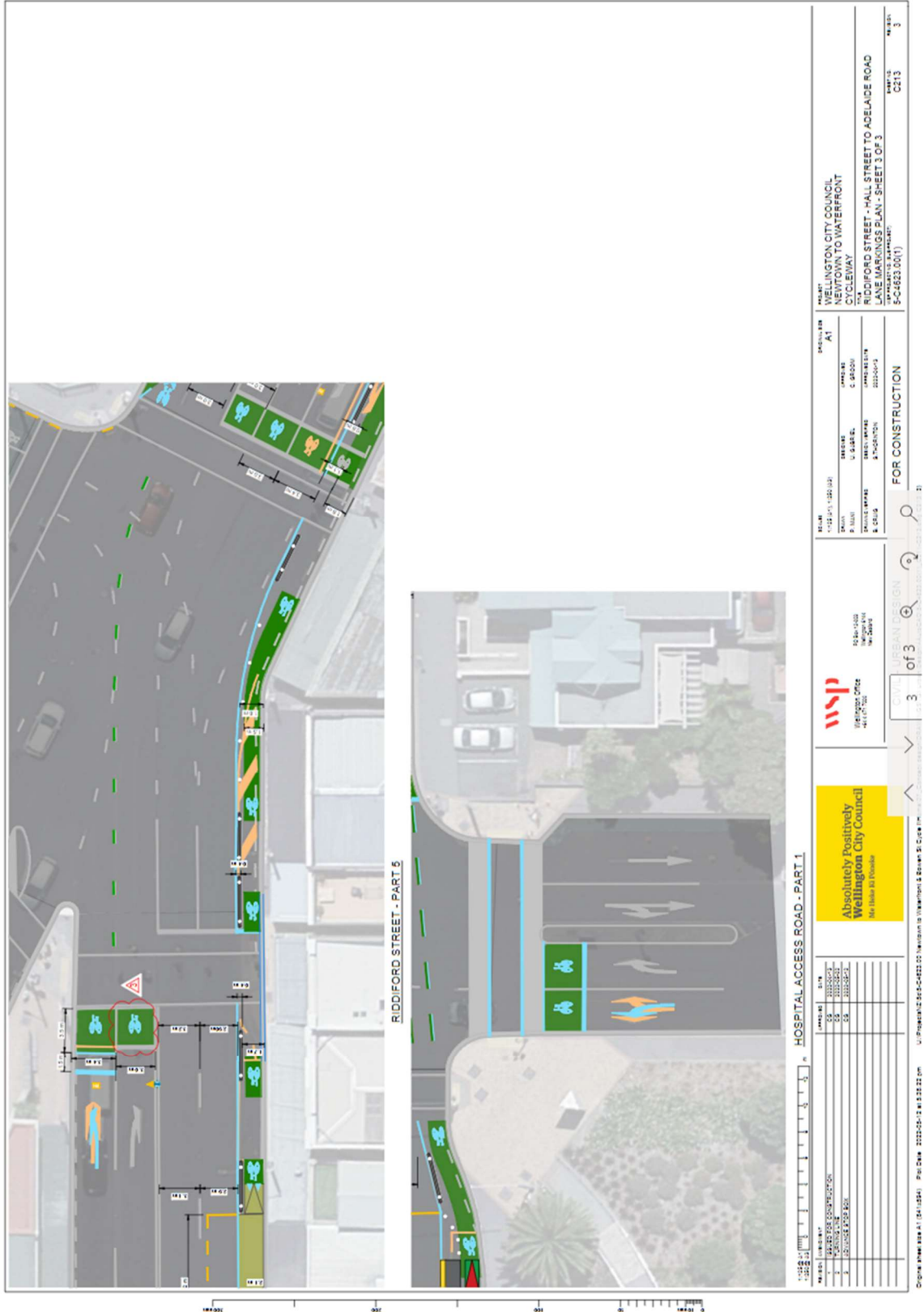
Traffic Resolution Plan: TR173-22 Newtown to Wellington City– Proposed cycle and bus lanes (from South to North)



We are proposing a change in your area

Absolutely Positively
Wellington City Council
Me Heke Ki Pōneke

Traffic Resolution Plan: TR173-22 Newtown to Wellington City– Proposed cycle and bus lanes (from South to North)

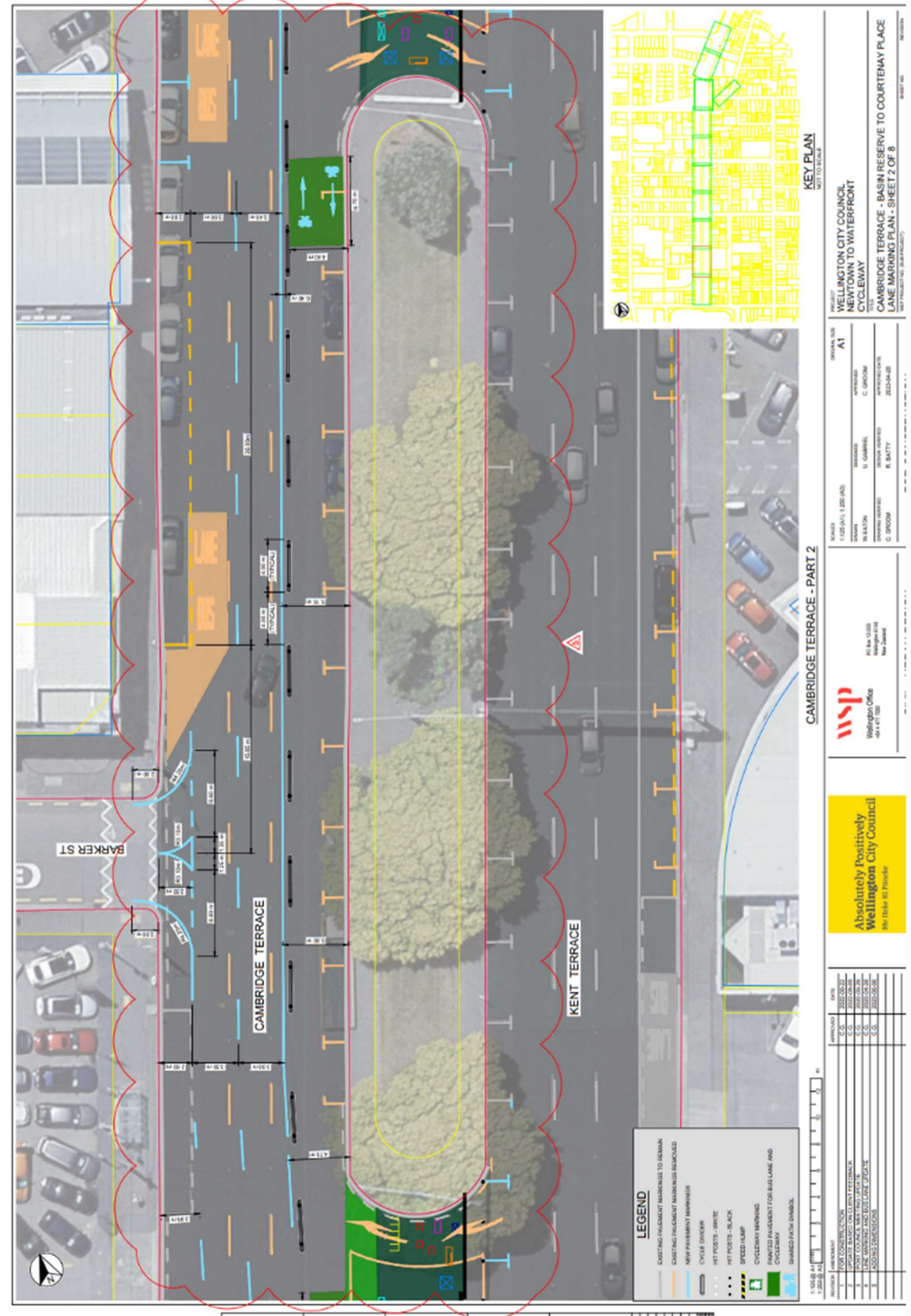


We are proposing a change in your area

Absolutely Positively
Wellington City Council

Me Heke Ki Pōneke

Traffic Resolution Plan: TR173-22 Newtown to Wellington City– Proposed cycle and bus lanes (from South to North) Amended as per Planning and Environment Committee meeting September 15, 2022

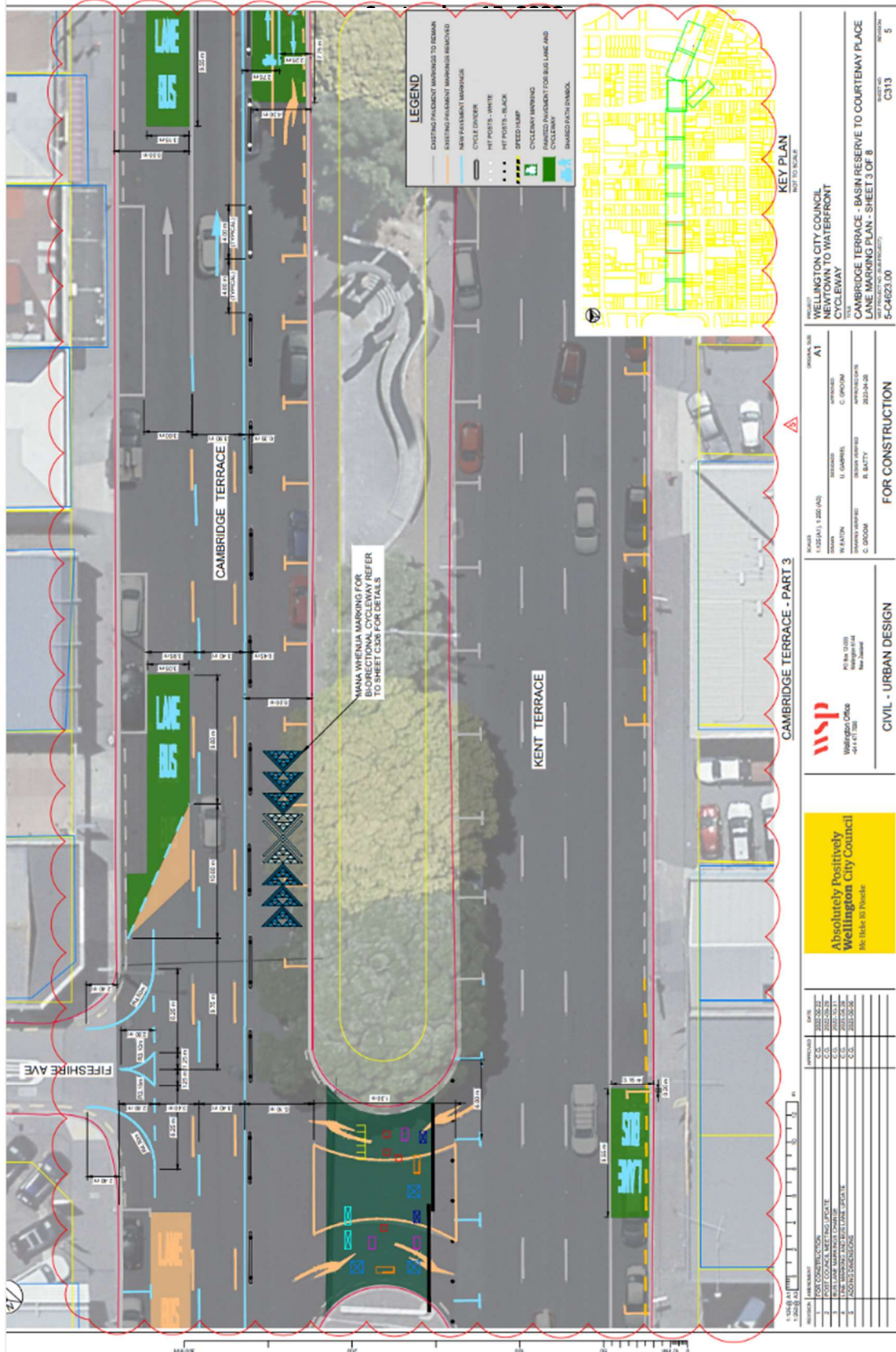


We are proposing a change in your area

Absolutely Positively
Wellington City Council

Me Heke Ki Pōneke

Traffic Resolution Plan: TR173-22 Newtown to Wellington City– Proposed cycle and bus lanes (from South to North) Amended as per Planning and Environment Committee meeting

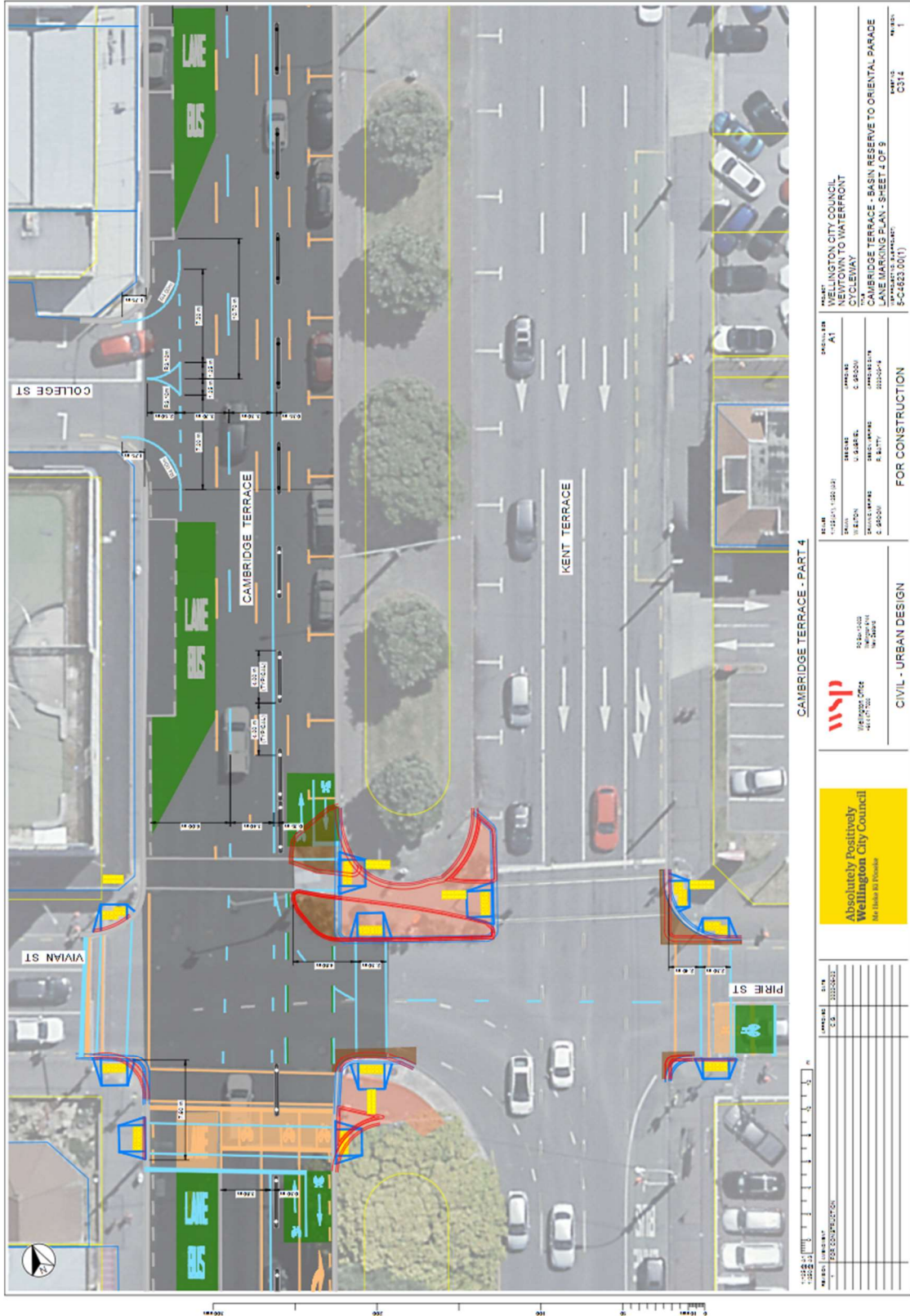


We are proposing a change in your area

Absolutely Positively
Wellington City Council

Me Heke Ki Pōneke

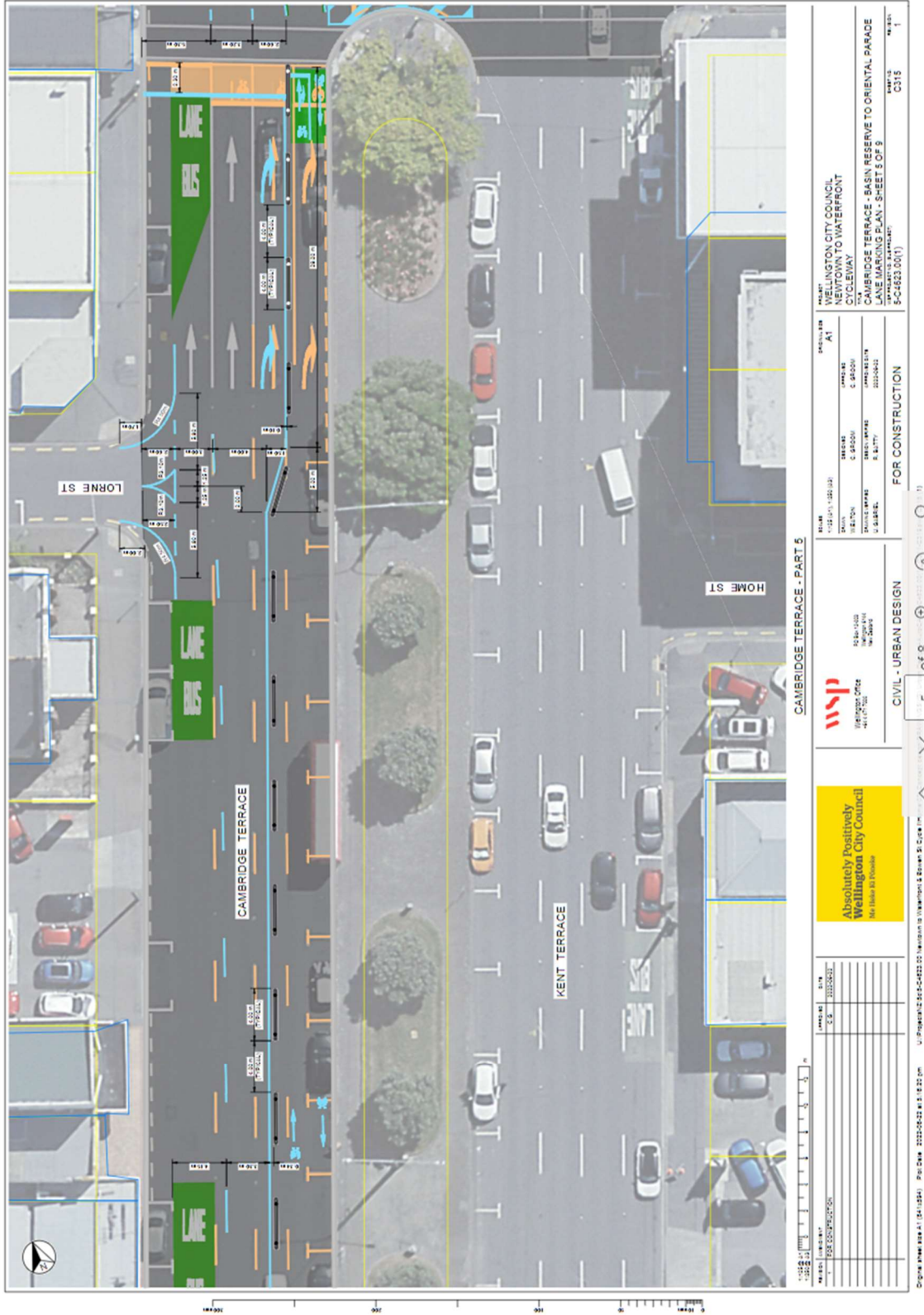
Traffic Resolution Plan: TR173-22 Newtown to Wellington City– Proposed cycle and bus lanes (from South to North)



We are proposing a change in your area

Absolutely Positively
Wellington City Council
Me Heke Ki Pōneke

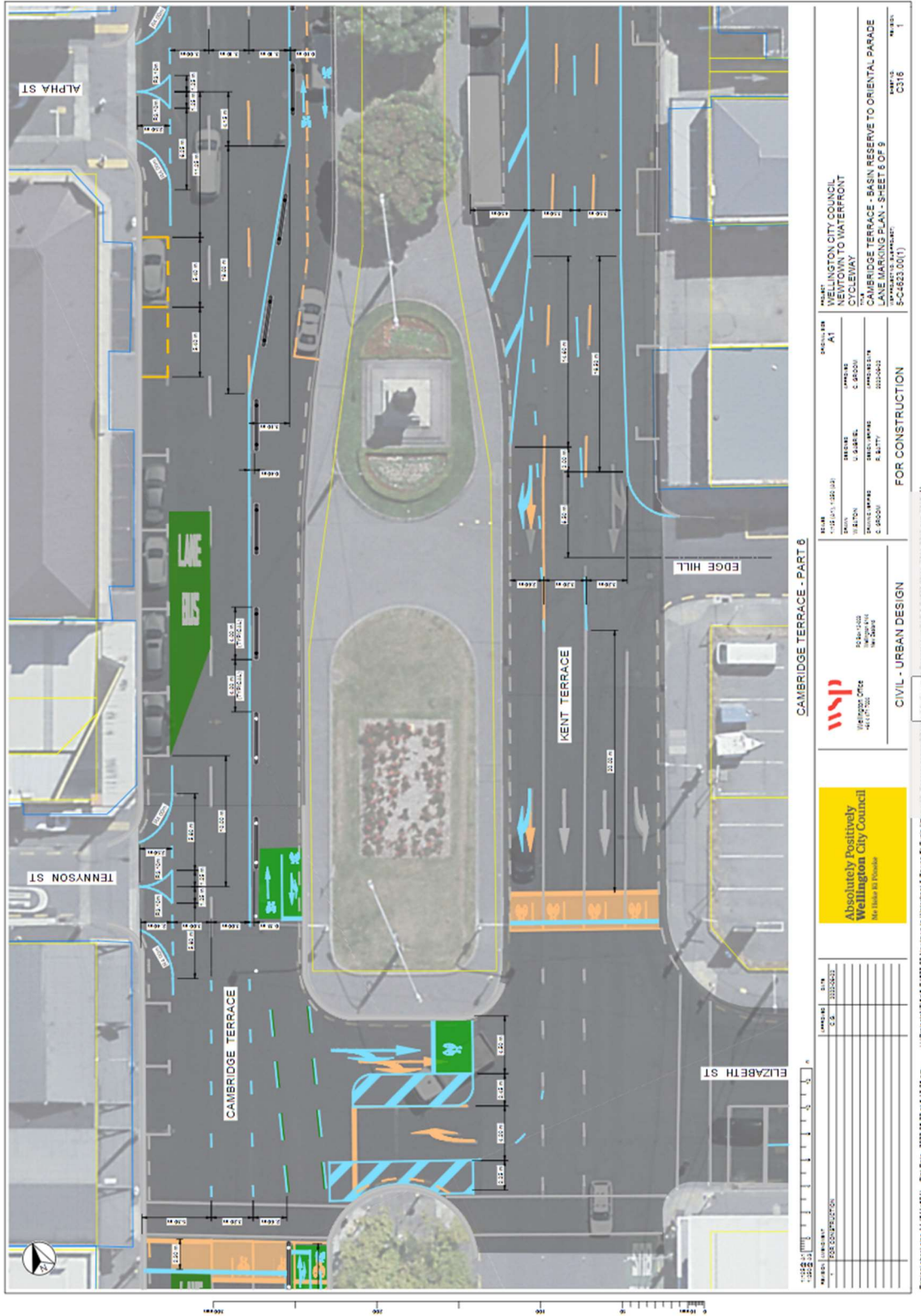
Traffic Resolution Plan: TR173-22 Newtown to Wellington City– Proposed cycle and bus lanes (from South to North)



We are proposing a change in your area

Absolutely Positively
Wellington City Council
Me Heke Ki Pōneke

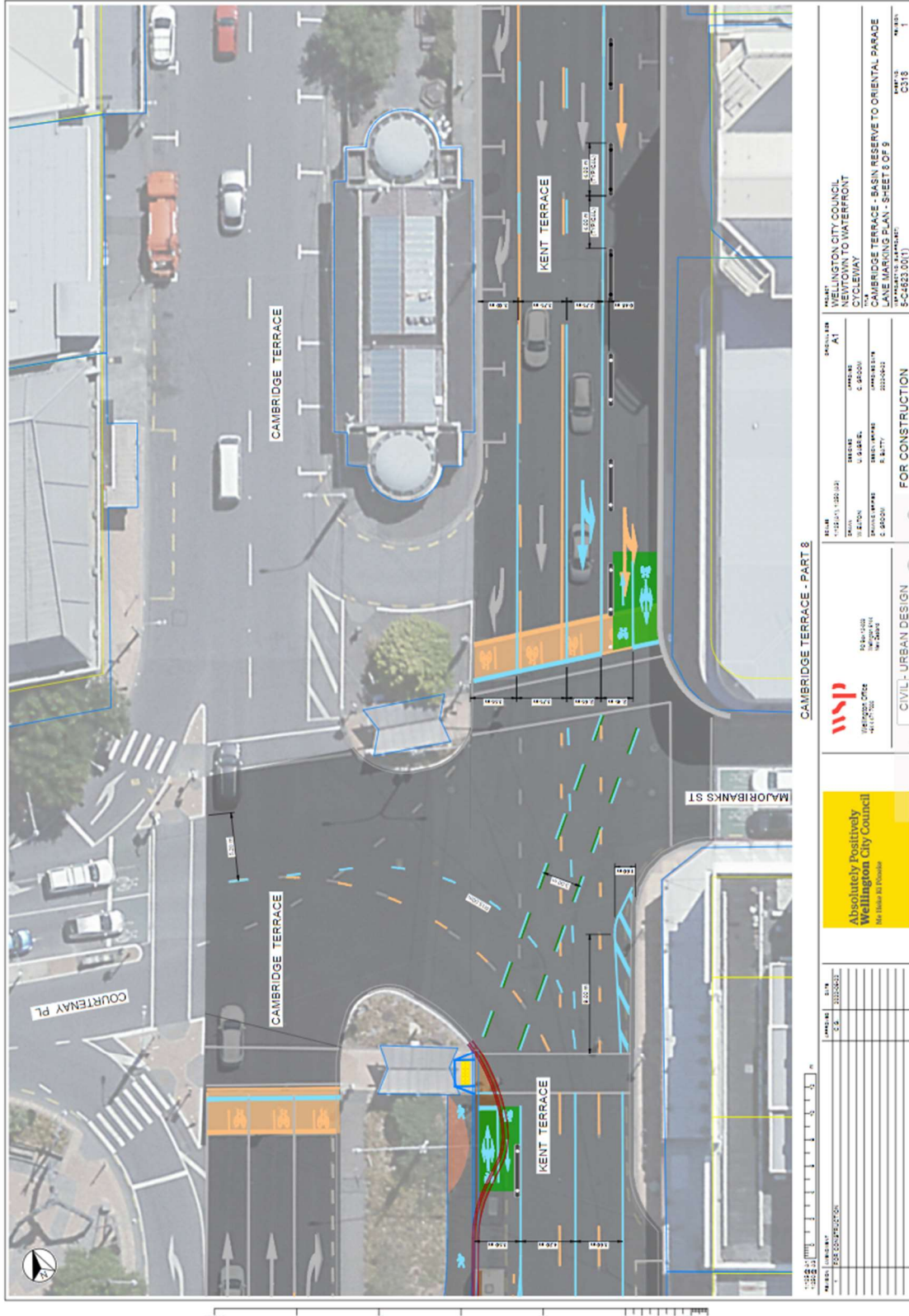
Traffic Resolution Plan: TR173-22 Newtown to Wellington City– Proposed cycle and bus lanes (from South to North)



We are proposing a change in your area

**Absolutely Positively
Wellington City Council**
Me Heke Ki Pōneke

Traffic Resolution Plan: TR173-22 Newtown to Wellington City– Proposed cycle and bus lanes (from South to North)

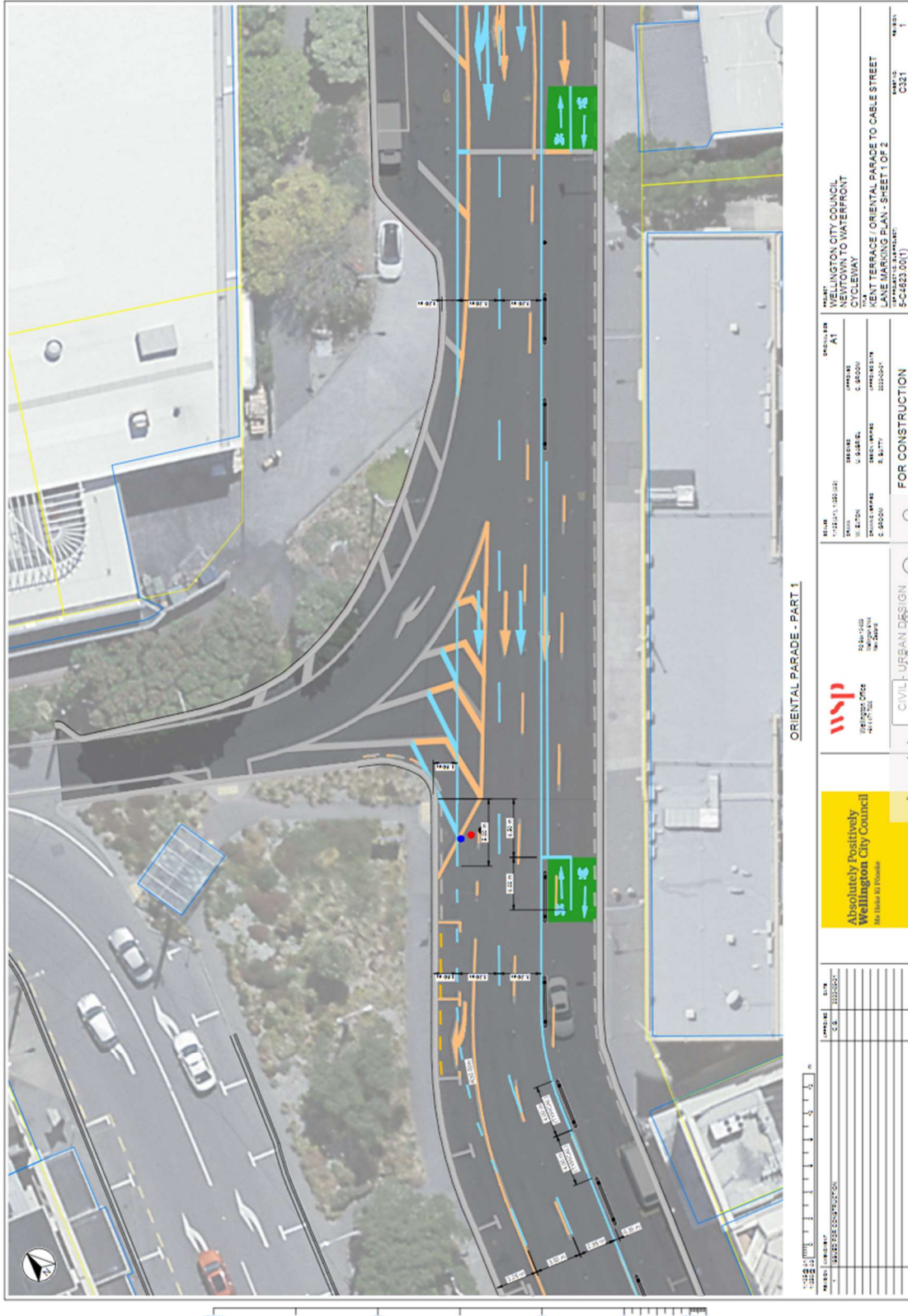


We are proposing a change in your area

Absolutely Positively
Wellington City Council

Me Heke Ki Pōneke

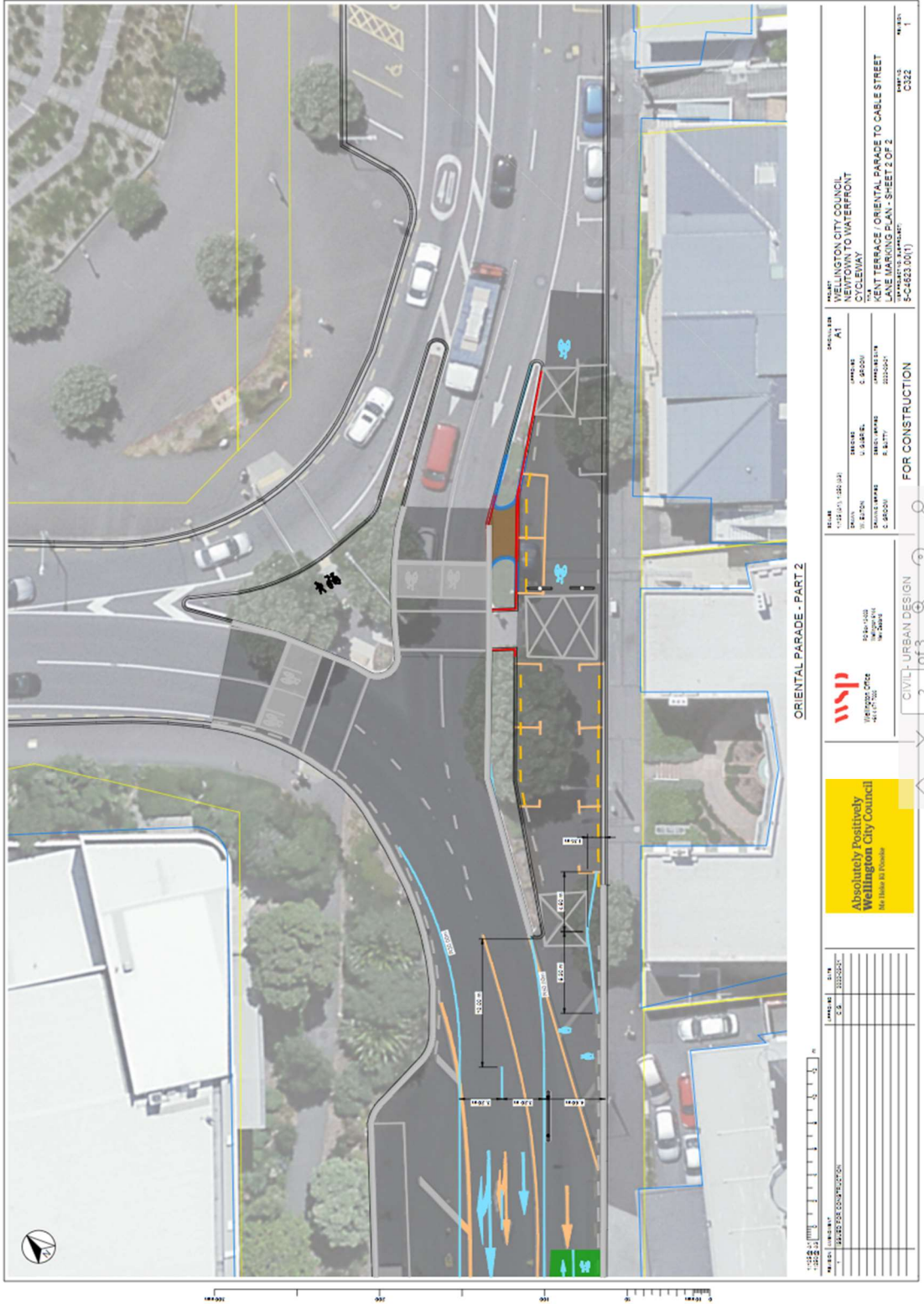
Traffic Resolution Plan: TR173-22 Newtown to Wellington City– Proposed cycle and bus lanes (from South to North)



We are proposing a change in your area

Absolutely Positively
Wellington City Council
Me Heke Ki Pōneke

Traffic Resolution Plan: TR173-22 Newtown to Wellington City– Proposed cycle and bus lanes (from South to North)



We are proposing a change in your area

Absolutely Positively
Wellington City Council
Me Heke Ki Pōneke

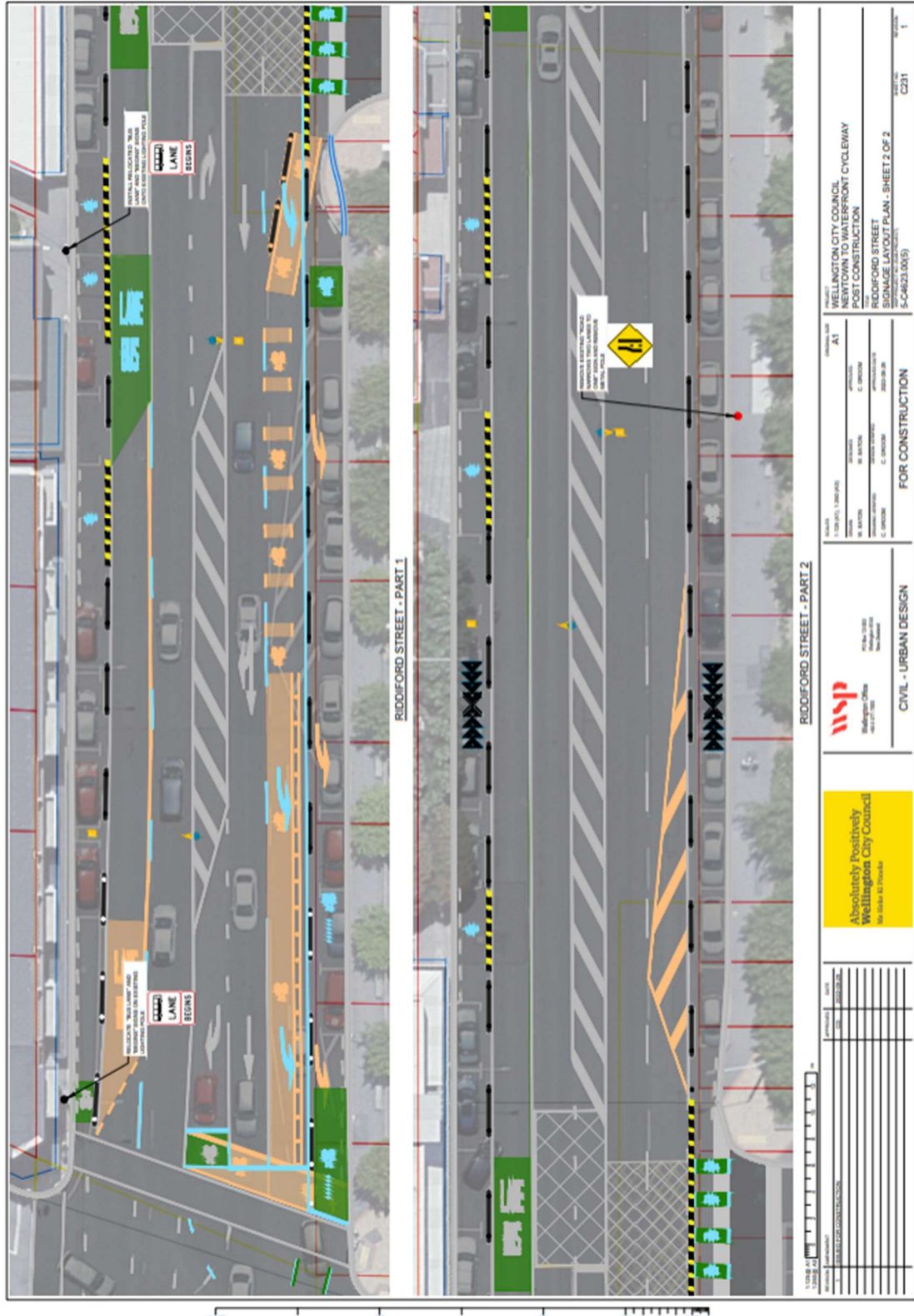
Traffic Resolution Plan: TR173-22 Newtown to Wellington City– Proposed cycle and bus lanes (from South to North)



We are proposing a change in your area

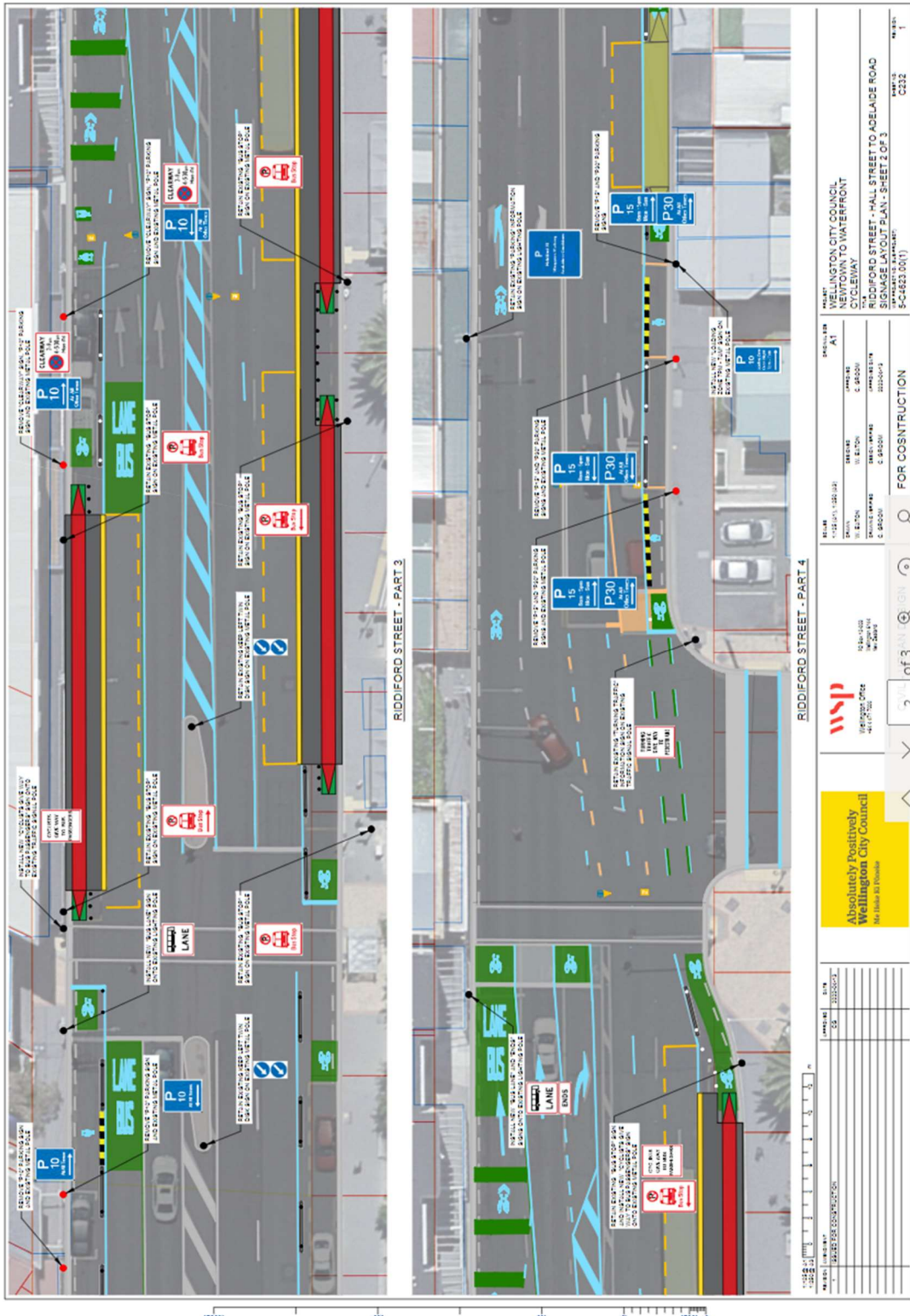
Traffic Resolution Plan: TR173-22 Newtown to Wellington City– Proposed cycle and bus lanes (from South to North)

Parking Signage plans (Amended as per Planning and Environment Committee meeting September 15, 2022)



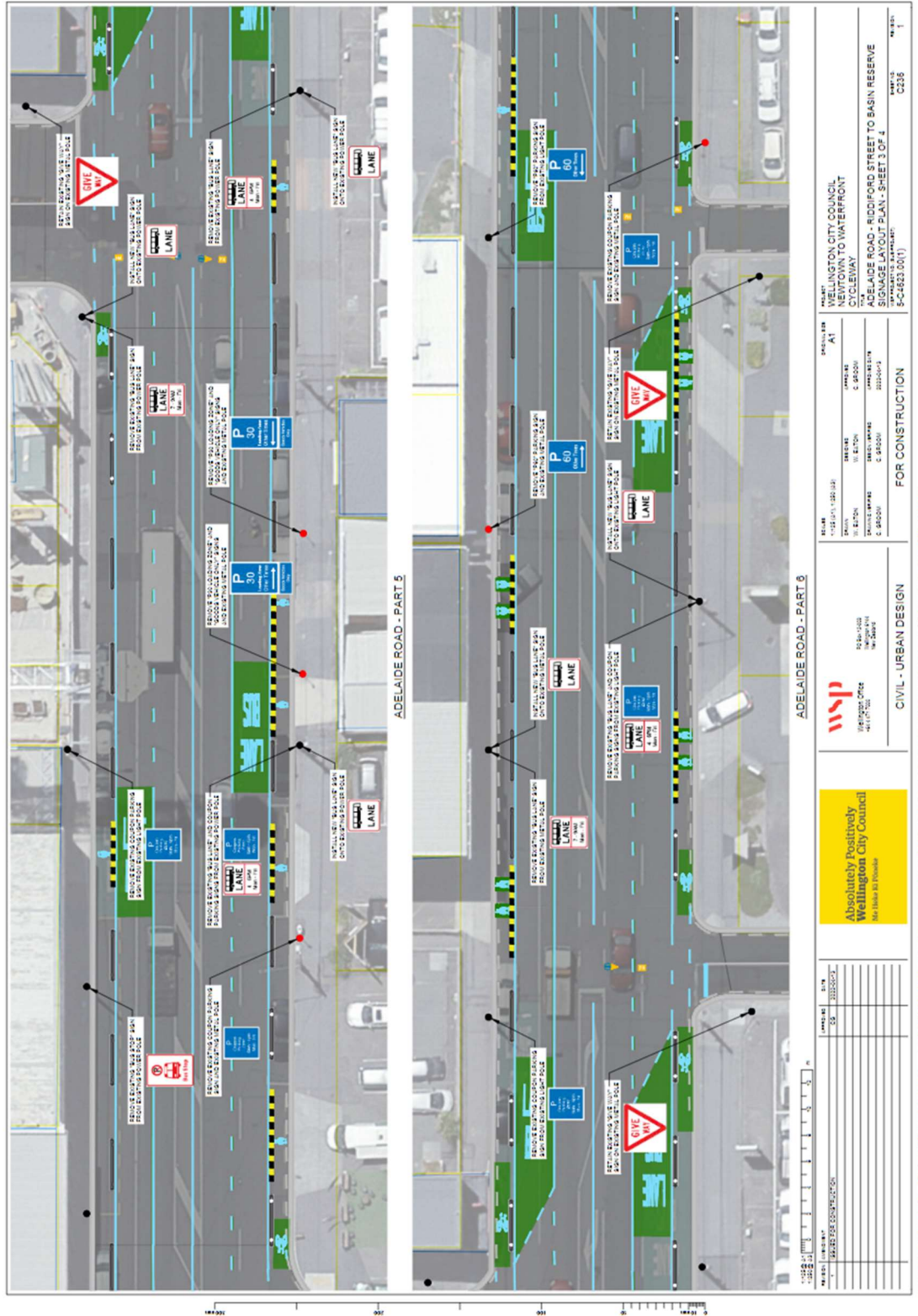
We are proposing a change in your area

Traffic Resolution Plan: TR173-22 Newtown to Wellington City– Proposed cycle and bus lanes (from South to North) Parking Signage plans



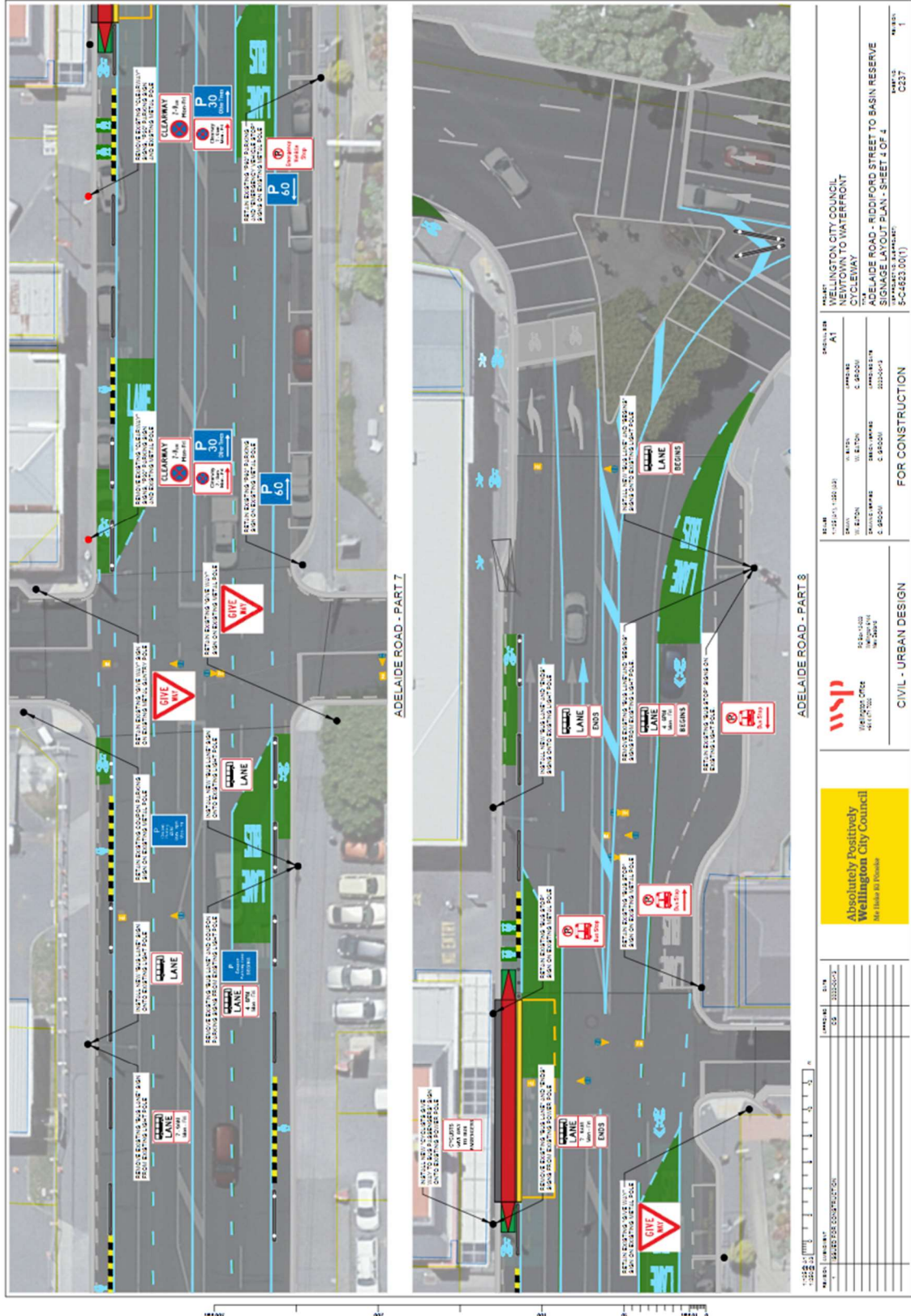
We are proposing a change in your area

Traffic Resolution Plan: TR173-22 Newtown to Wellington City– Proposed cycle and bus lanes (from South to North) Parking Signage plans



We are proposing a change in your area

Traffic Resolution Plan: TR173-22 Newtown to Wellington City– Proposed cycle and bus lanes (from South to North) Parking Signage plans

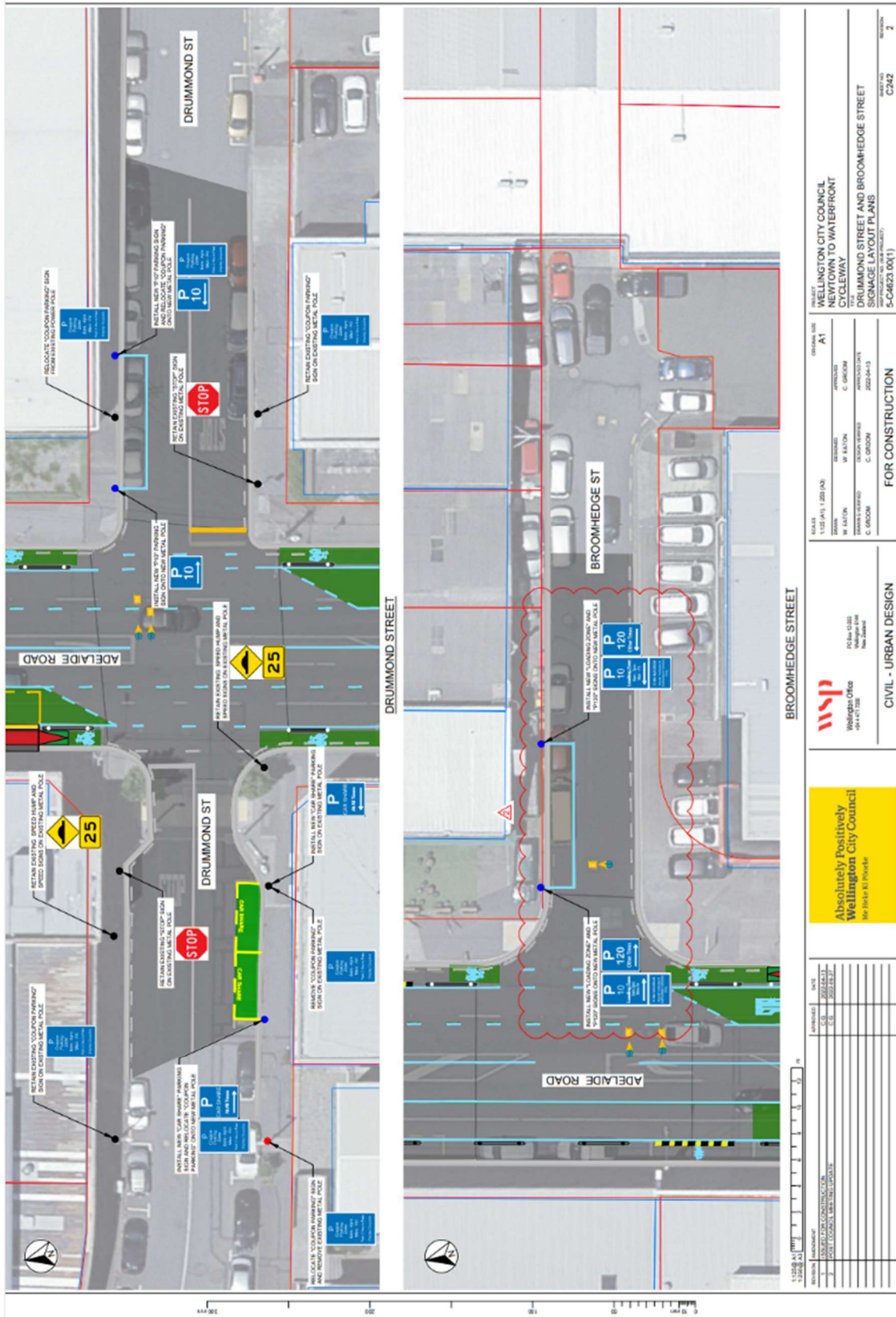


We are proposing a change in your area

Absolutely Positively
Wellington City Council

Me Heke Ki Pōneke

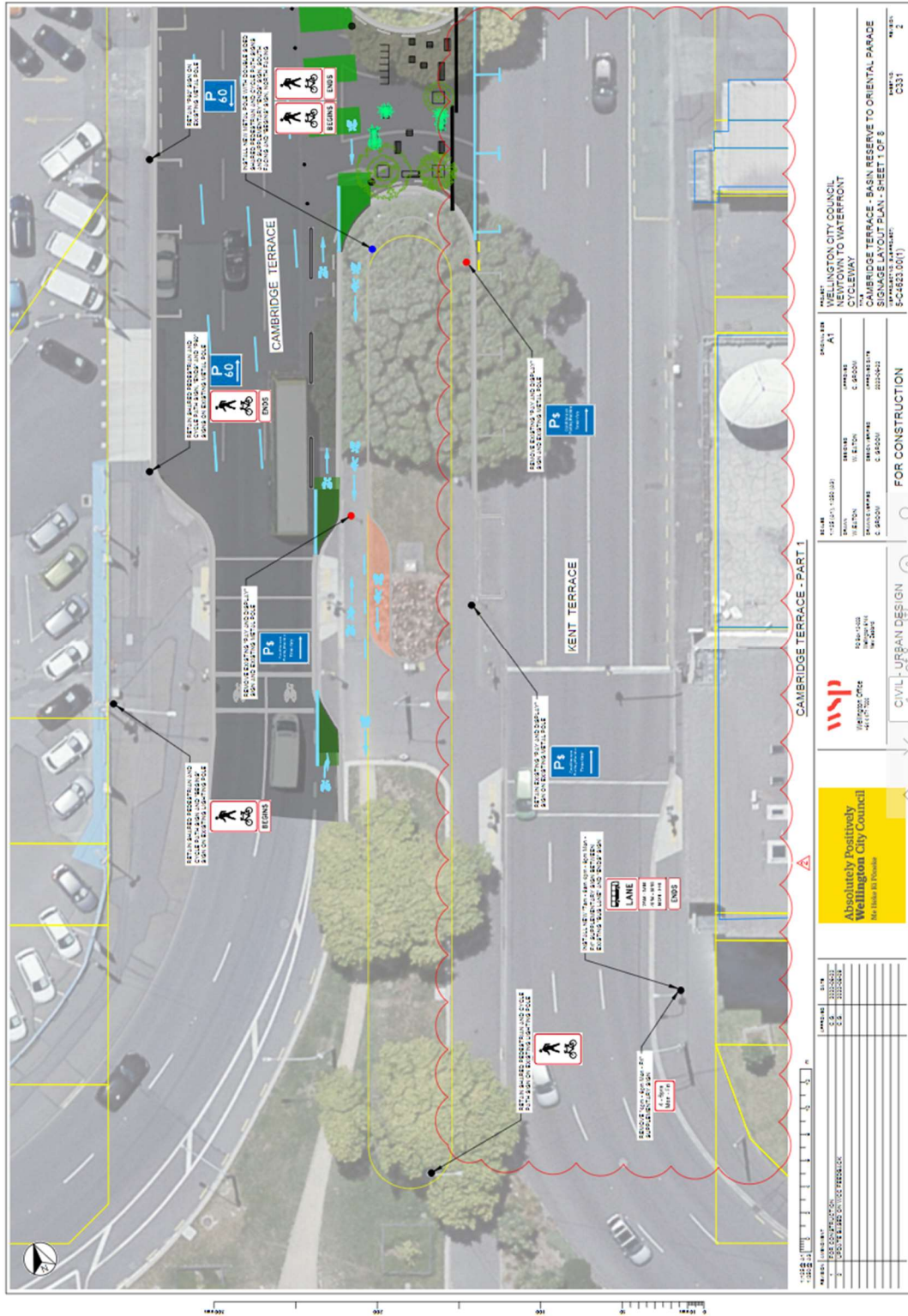
Traffic Resolution Plan: TR173-22 Newtown to Wellington City– Proposed cycle and bus lanes (from South to North) Parking Signage plans (Amended as per Planning and Environment Committee meeting September 15, 2022)



<p>DATE: 1:52 (A) 1:50 (A2)</p> <p>DESIGN: W. HUTTON</p> <p>DESIGNED BY: C. GROOM</p> <p>DATE: 2022-04-13</p> <p>FOR CONSTRUCTION</p>		<p>PROJECT: WELLINGTON CITY COUNCIL NEWTON TO WATERFRONT CYCLEWAY</p> <p>DRUMMOND STREET AND BROOMHEDGE STREET SIGNAGE LAYOUT PLANS</p> <p>APP. PROJECT NO: 173-22 (REV. 1)</p> <p>5-C4623 (0x1)</p> <p>2</p>									
<p>WSP Wellington Office +64 4 471 7000</p> <p>CIVIL - URBAN DESIGN</p>		<p>ABSOLUTELY POSITIVELY Wellington City Council MR JOHN R. PETERSEN</p>									
<p>REVISIONS:</p> <table border="1"> <thead> <tr> <th>NO.</th> <th>DATE</th> <th>DESCRIPTION</th> </tr> </thead> <tbody> <tr> <td>1</td> <td>2022-04-13</td> <td>ISSUED FOR CONSTRUCTION</td> </tr> <tr> <td>2</td> <td>2022-04-13</td> <td>POST-COMMENCEMENT SIGNAGE LOCATIONS</td> </tr> </tbody> </table>	NO.	DATE	DESCRIPTION	1	2022-04-13	ISSUED FOR CONSTRUCTION	2	2022-04-13	POST-COMMENCEMENT SIGNAGE LOCATIONS	<p>SCALE: 1:100</p>	
NO.	DATE	DESCRIPTION									
1	2022-04-13	ISSUED FOR CONSTRUCTION									
2	2022-04-13	POST-COMMENCEMENT SIGNAGE LOCATIONS									

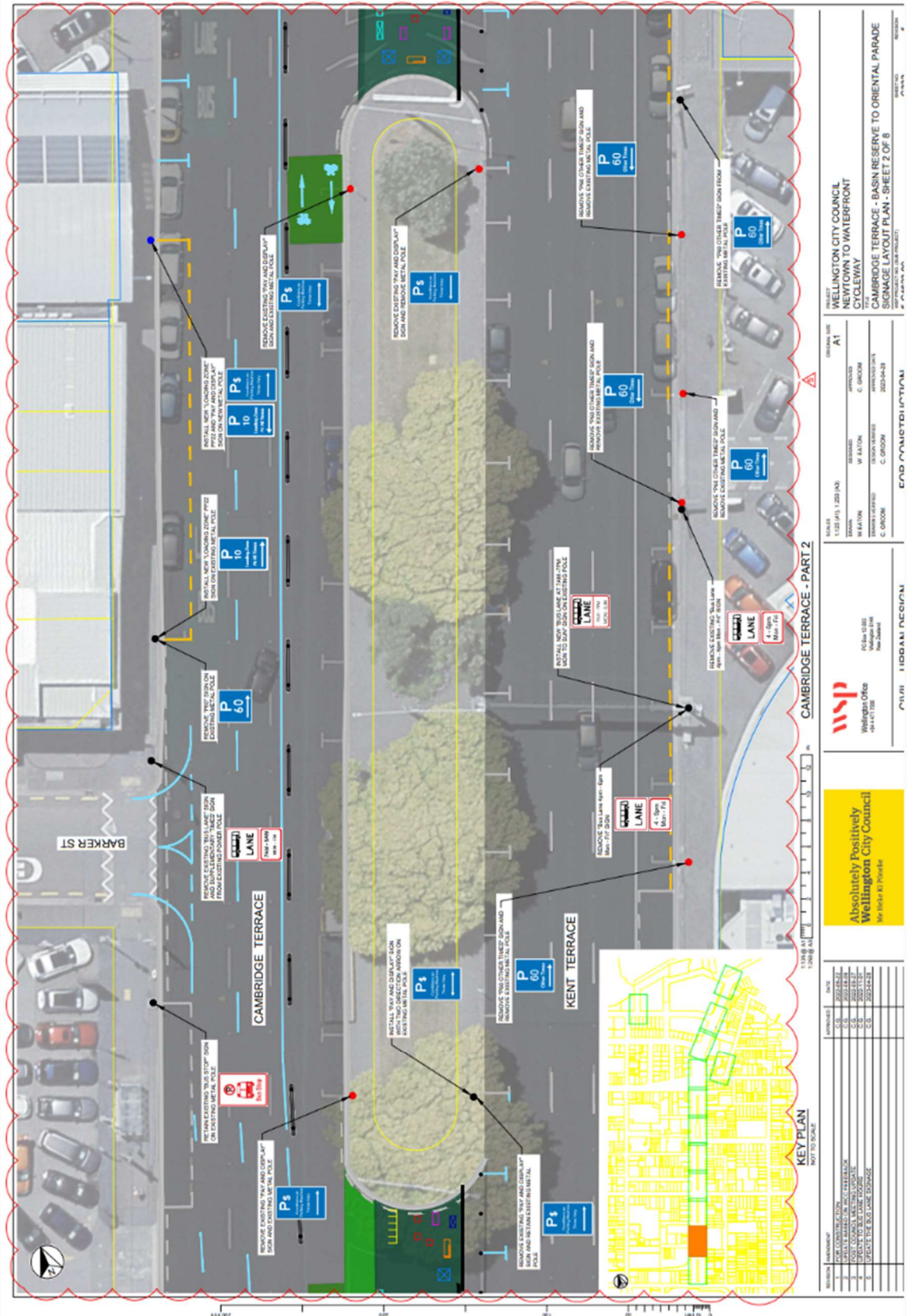
We are proposing a change in your area

Traffic Resolution Plan: TR173-22 Newtown to Wellington City—Proposed cycle and bus lanes (from South to North) Parking Signage plans



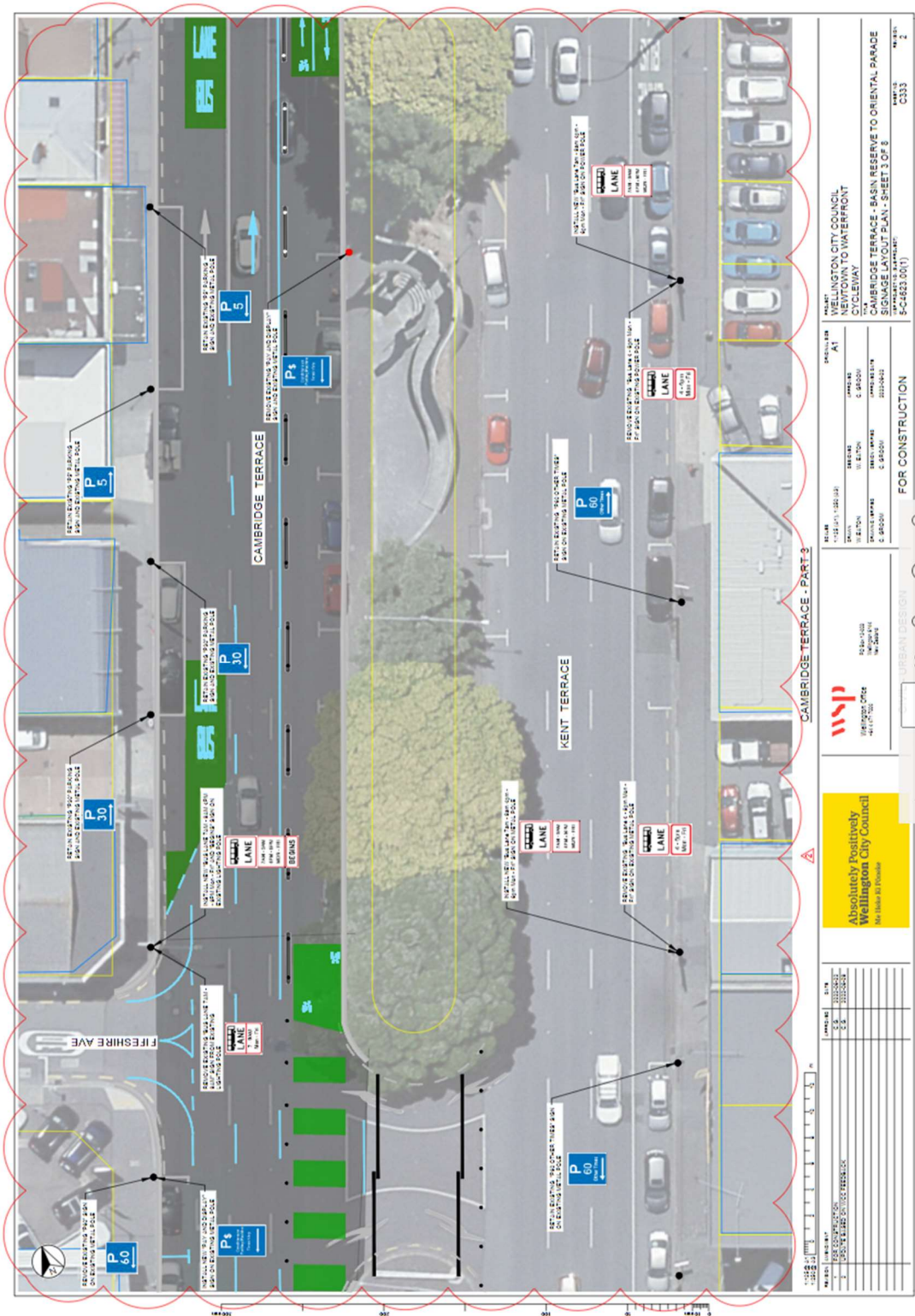
We are proposing a change in your area

Traffic Resolution Plan: TR173-22 Newtown to Wellington City– Proposed cycle and bus lanes (from South to North) Parking Signage plans (Amended as per Planning and Environment Committee September 15, 2022)

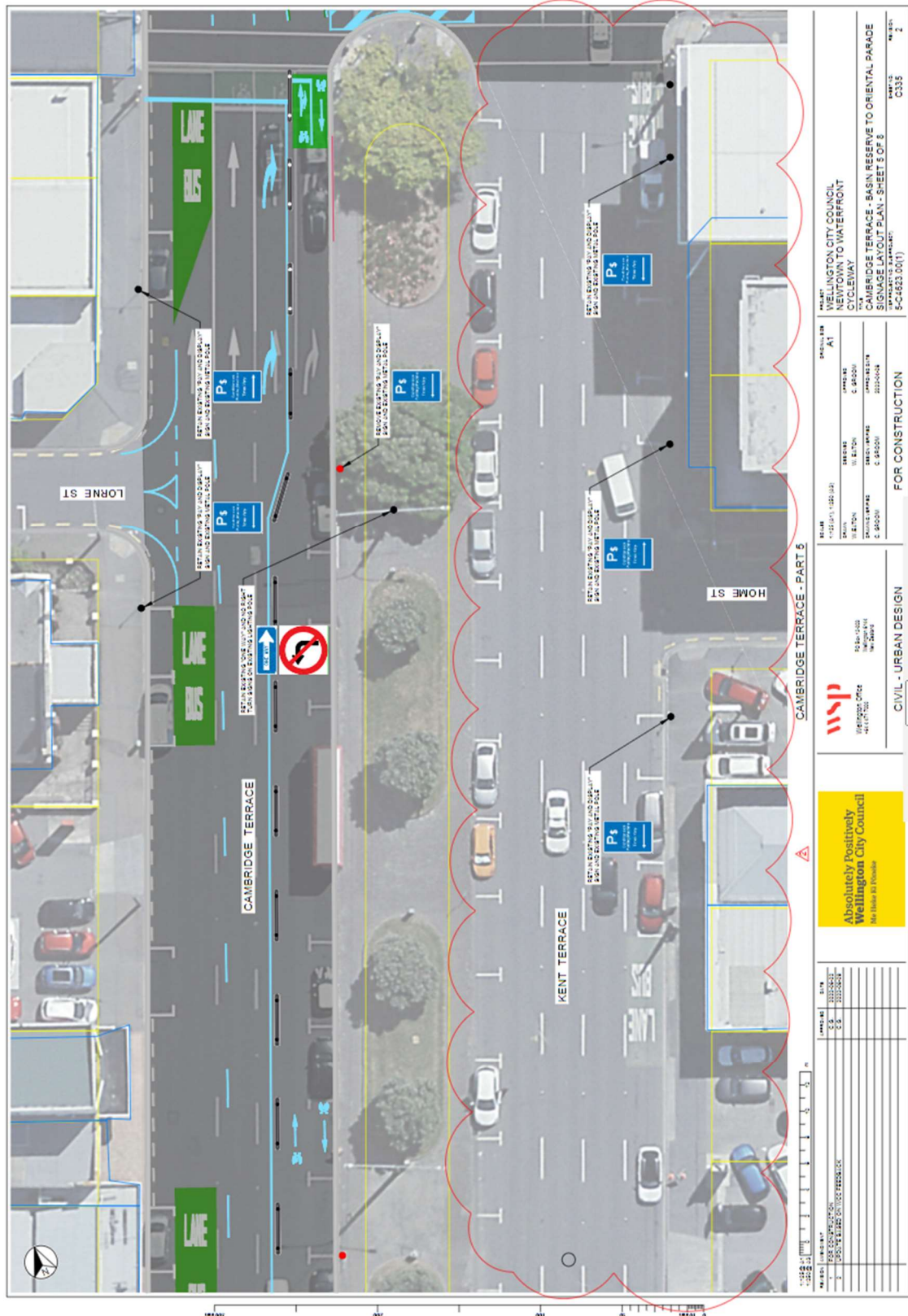


We are proposing a change in your area

Traffic Resolution Plan: TR173-22 Newtown to Wellington City– Proposed cycle and bus lanes (from South to North) Parking Signage plans



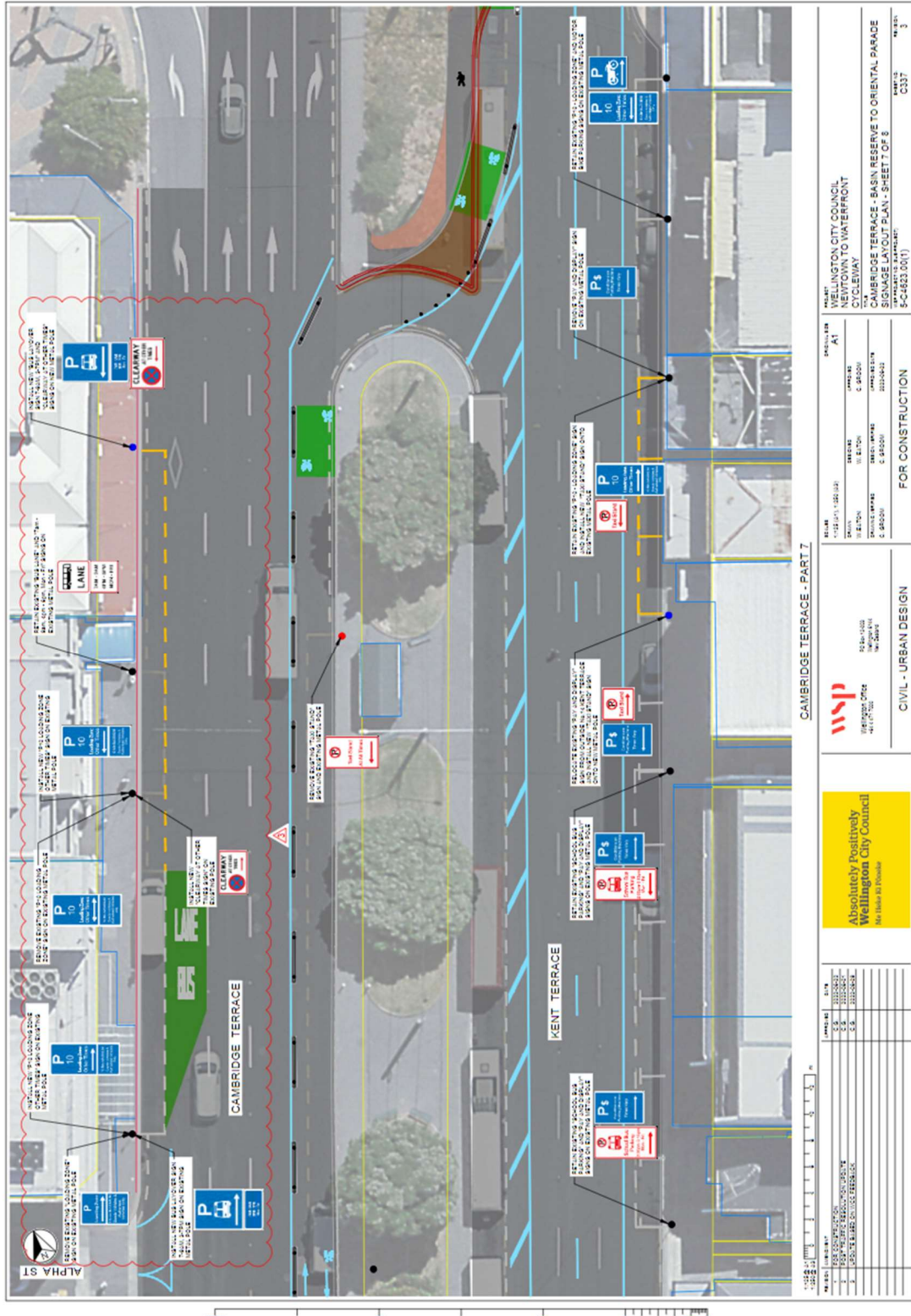
Traffic Resolution Plan: TR173-22 Newtown to Wellington City– Proposed cycle and bus lanes (from South to North) Parking Signage plans



We are proposing a change in your area

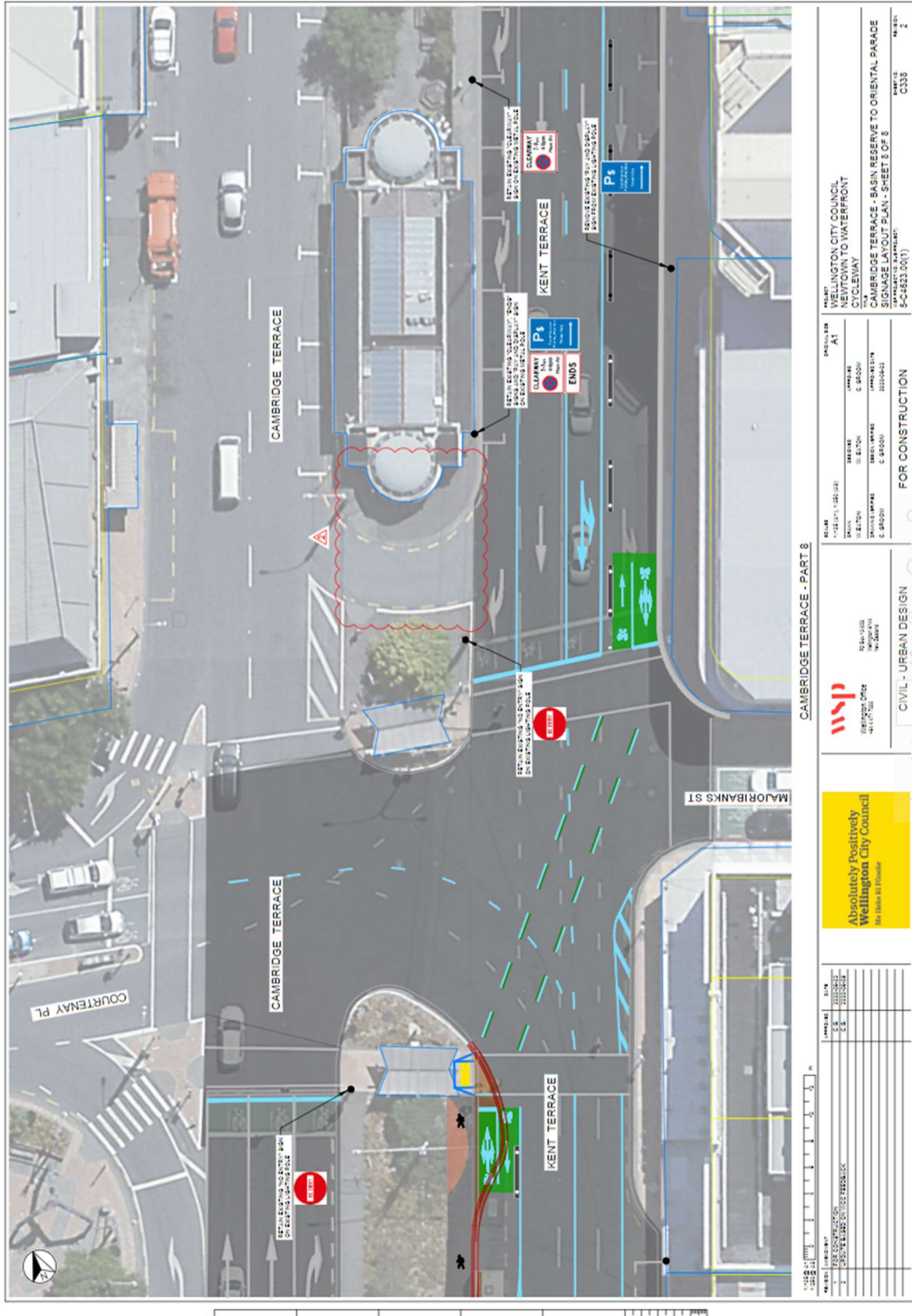
Absolutely Positively
Wellington City Council
Me Heke Ki Pōneke

Traffic Resolution Plan: TR173-22 Newtown to Wellington City– Proposed cycle and bus lanes (from South to North) Parking Signage plans

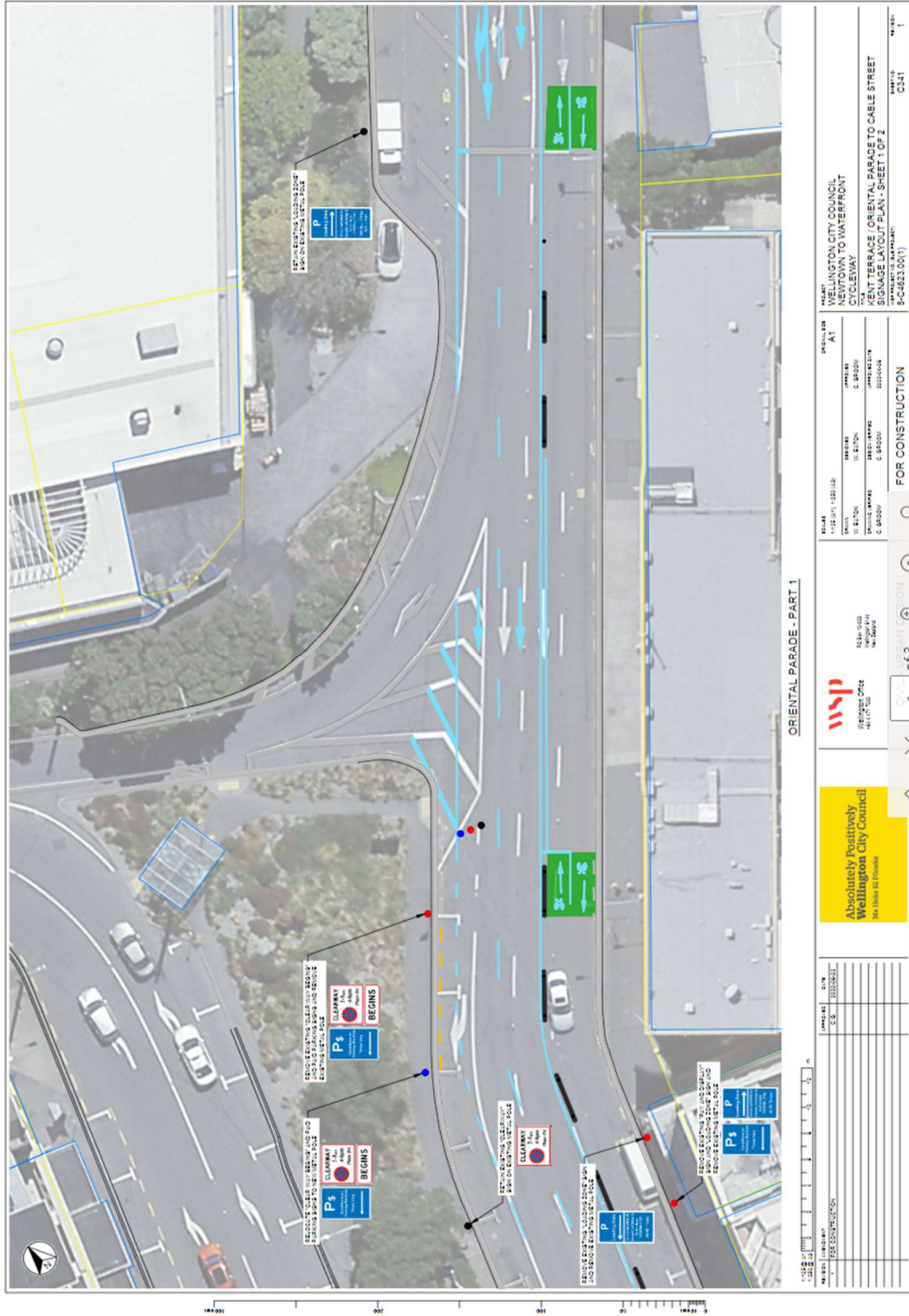


We are proposing a change in your area

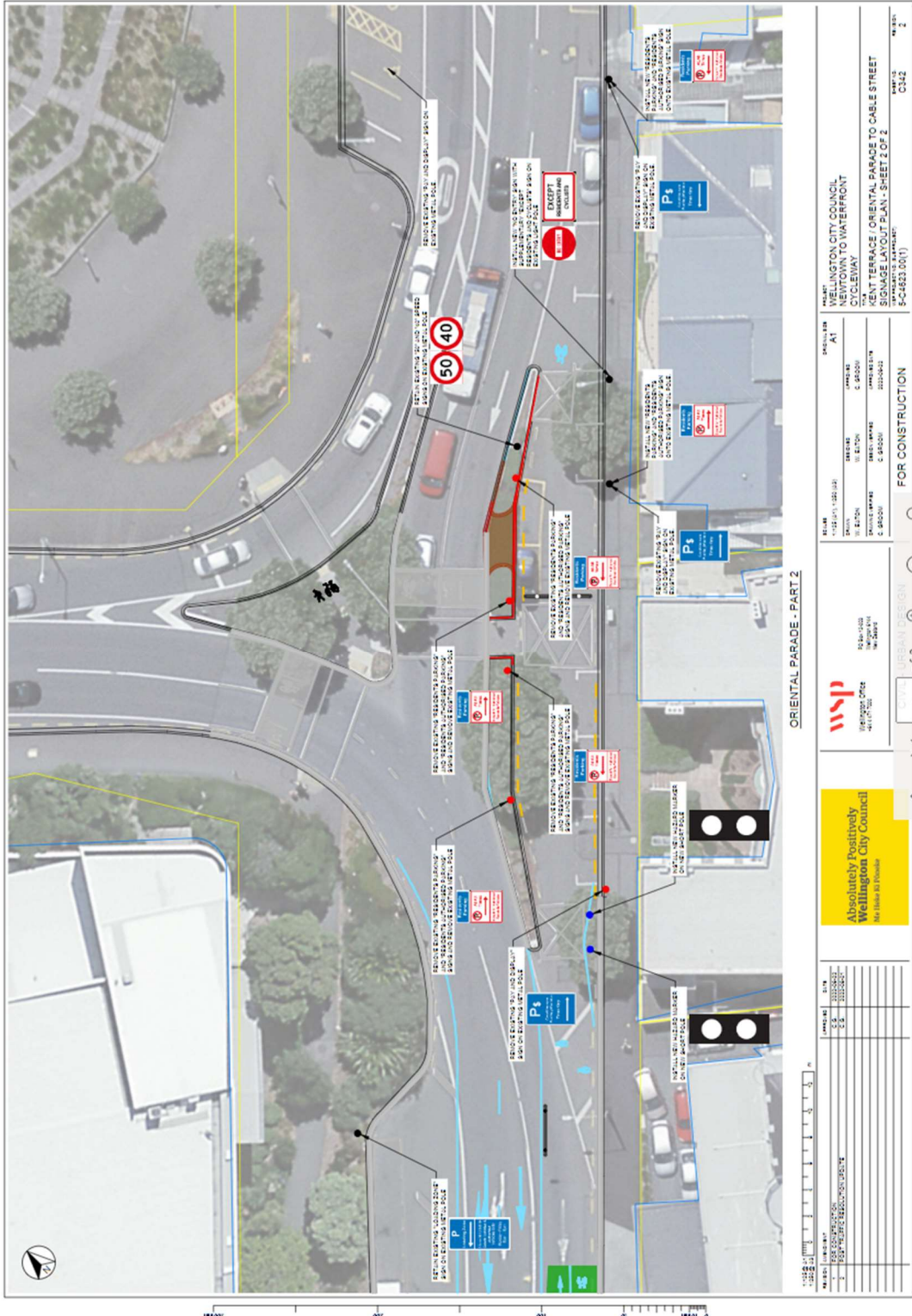
Traffic Resolution Plan: TR173-22 Newtown to Wellington City– Proposed cycle and bus lanes (from South to North) Parking Signage plans



Traffic Resolution Plan: TR173-22 Newtown to Wellington City– Proposed cycle and bus lanes (from South to North) Parking Signage plans



Traffic Resolution Plan: TR173-22 Newtown to Wellington City– Proposed cycle and bus lanes (from South to North) Parking Signage plans

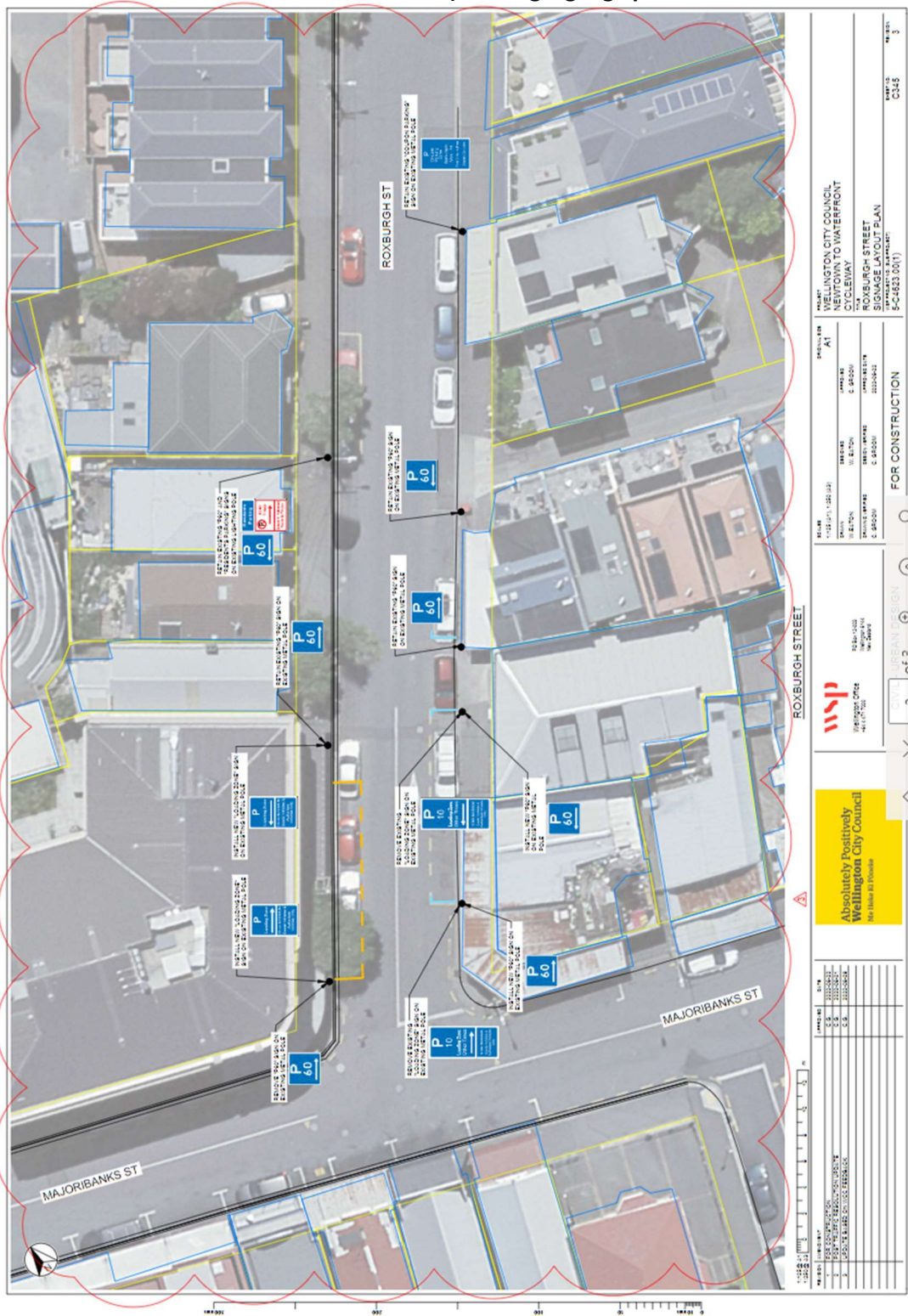


We are proposing a change in your area

Absolutely Positively
Wellington City Council

Me Heke Ki Pōneke

Traffic Resolution Plan: TR173-22 Newtown to Wellington City– Proposed cycle and bus lanes (from South to North) Parking Signage plans



We are proposing a change in your area

Legal Description (Amended following Planning and Environment Committee on Sept 23 2022):

Add to Schedule I (Cycleway) of the Traffic Restrictions Schedule

Column One	Column Two	Column Three
Riddiford Street	Cycleway, at all times	East side, commencing at its intersection with Adelaide Road (Grid coordinates X= 1,748,840.4m Y= 5,425,603.0m) and extending in a southerly direction following the eastern kerb for 399.44 metres.
Riddiford Street	Cycleway, at all times	West side, commencing 8 metres north of its intersection with Hall Street (Grid coordinates X= 1,748,908.4m Y= 5,425,207.8m) and extending in a northerly direction following the western kerb for 252.80 metres.
Adelaide Road	Cycleway, at all times	East side, commencing 5 metres south of its intersection with Girton Street (Grid coordinates X= 1,748,979.2m Y= 5,426,158.3m) and extending in a southerly direction following the eastern kerb line for 567.16metres.
Adelaide Road	Cycleway, at all times	West side, commencing 142 metres south of its intersection with John Street (Grid coordinates X= 1,748,826.0m Y= 5,425,617.5m) and extending in a northerly direction following the western kerb line for 521.36 metres.
Cambridge Terrace	Bi-directional Cycleway, at all times	East side, commencing 43.1 metres north of its intersection with Buckle Street (Grid coordinates X= 1,749,067.0m Y= 5,426,471.2m) and extending in a northerly direction following the eastern kerb line for 576.82 metres.
Kent Terrace	Bi-directional Cycleway, at all times	West side, commencing at its intersection with Courtenay Place (Grid coordinates X= 1,749,360.0m Y=5,427,058.3m) and extending in a southerly direction following the western kerb line for 30 metres.
Kent Terrace	Bi-directional Cycleway, at all times	East side, commencing at its intersection with Majoribanks Street (Grid coordinates X= 1,749,381.9m Y=5,427,069.9m) and extending in a northerly direction following the eastern kerb line for 183.38 metres

We are proposing a change in your area

Add to Schedule B (Class restricted) of the Traffic Restrictions Schedule

Column One	Column Two	Column Three
Riddiford Street	<i>Bus lane, at all times. Lane may be used by bicycles, motorcycles, emergency vehicles, traffic enforcement, 'in-service' taxis, and any vehicle for 50m turning into or out of a side street or property.</i>	<i>West side, commencing 58 metres north of its intersection with Hall Street (Grid coordinates X= 1,748,908.4m Y= 5,425,207.8m) and extending in a northerly direction following the western kerb for 319.61 metres.</i>
Adelaide Road	<i>Bus lane, at all times. Lane may be used by bicycles, motorcycles, emergency vehicles, traffic enforcement, 'in-service' taxis, and any vehicle for 50m turning into or out of a side street or property.</i>	<i>East side, commencing at its intersection with Rugby Street (Grid coordinates X= 1,749,013.9m Y= 5,426,271.7m) and extending in a southerly direction following the eastern kerb line for 433.95 metres.</i>
Adelaide Road	<i>Bus lane, at all times. Lane may be used by bicycles, motorcycles, emergency vehicles, traffic enforcement, 'in-service' taxis, and any vehicle for 50m turning into or out of a side street or property.</i>	<i>West side, commencing at its intersection with John Street (Grid coordinates X= 1,748,826.0m Y= 5,425,617.5m) and extending in a northerly direction following the western kerb line for 625.48 metres.</i>
Cambridge Terrace	<i>Bus lane, 7am-9am, 4pm-6pm Monday – Friday</i>	<i>West side, commencing at its intersection with Barker Street (Grid coordinates X= 1,749,124.3m Y= 5,426,587.1 m) and extending in a northerly direction following the western kerb line for 439.6 metres.</i>
Kent Terrace	<i>Bus lane, 7am – 9am, 4pm-6pm Monday – Friday</i>	<i>East side, commencing at its intersection with Elizabeth Street (Grid coordinates X= 1,749,293.5m Y= 5,426,873.8m) and extending in a southerly direction following the eastern kerb line for 406.31 metres.</i>

We are proposing a change in your area

Cambridge Terrace	<i>Bus layover, 7am-9am, 3-7pm Monday – Friday</i>	<i>West side, commencing 35.9 meters south of its intersection with Courtenay Place (Grid coordinates X= 1,749,333.2m Y= 5,427,058.7m) and extending in a southerly direction following the western kerb line for 32 metres.</i>
Riddiford Street	<i>Buses and Cyclist may go straight ahead from left lane</i>	<i>Riddiford Street northbound left-hand lane at the Adelaide Road intersection. (Grid coordinates X= 1,748,829.6m Y= 5,425,585.1m)</i>
Cambridge Terrace	<i>Taxi Stand, at all times</i>	<i>West side, commencing 34 meters north of its intersection with Tennyson Street (Grid coordinates X= 1,749,271.7m Y= 5,426,912.5m) and extending in a northerly direction following the western kerb line for 12 metres. (2 parallel parking spaces)</i>
Kent Terrace	<i>Taxi Stand, at all times</i>	<i>East side, commencing 54 meters south of its intersection with Majoribanks Street (Grid coordinates X= 1,749,381.9m Y=5,427,069.9m) and extending in a southerly direction following the eastern kerb line for 18 metres. (3 parking spaces)</i>
Riddiford Street	<i>Loading Zone, P10 7pm-7am Monday - Sunday</i>	<i>East side, commencing 28 metres south of its intersection with John Street and Adelaide Road (Grid coordinates x= 1748841.0 m, y= 5425600.3 m), and extending in a southerly direction following the eastern kerb line for 8 metres.</i>
Cambridge Terrace	<i>Loading Zone, P10 at all times</i>	<i>West side, commencing 11.5 metres north of its intersection with Barker Street (Grid Coordinates X=1,749,125.4m, Y=5,426,586.6m) and extending in a northerly direction following the western kerb line for 30 metres. (6 parallel parking spaces)</i>
Roxburgh Street	<i>Loading Zone, P30 at all times</i>	<i>North side, commencing 5 metres northeast of its intersection with Majoribanks Street (Grid Coordinates X= 1,749,444.8 m, Y= 5,427,041.2 m) and extending in a northerly direction following the western kerb line for 12 metres. (2 parallel parking spaces)</i>
Broomhedge Street	<i>Loading Zone, P10, 8am-3pm Monday – Friday</i>	<i>North side, commencing 5 metres east of its intersection with Adelaide Road (Grid coordinates X= 1,748,923.3m Y= 5,425,937.1m) and extending in an easterly direction following the northern kerb line for 12 metres. (2 parallel parks)</i>

We are proposing a change in your area

Adelaide Road	<i>Bus Stop, At all times</i>	<i>West side, commencing 242.5 metres north of its intersection with John Street (Grid coordinates X= 1,748,826.0m Y= 5,425,617.5m) and extending in a northerly direction following the western kerb line for 20 metres.</i>
Adelaide Road	<i>Shared path, at all times. Pedestrians have priority.</i>	<i>West side, commencing its intersection with Rugby Street (Grid Coordinates X= 1,748,996.7m, Y= 5,426,283.0m) and extending in a southerly direction following the western footpath for 23 metres.</i>
Rugby Street	<i>Shared path, at all times. Pedestrians have priority.</i>	<i>South side, commencing its intersection with Adelaide Road (Grid Coordinates X= 1,748,996.7m, Y= 5,426,283.0m) and extending in westerly direction following the southern footpath for 8 metres.</i>
Cambridge Terrace	<i>Shared path, at all times. Pedestrians have priority.</i>	<i>East side, commencing 43.1 metres north of its intersection with Buckle Street (Grid coordinates X= 1,749,067.0m Y= 5,426,471.2m) and extending in a northerly direction following the eastern footpath for 40 metres.</i>
Able Street	<i>Shared path, at all times. Pedestrians have priority.</i>	<i>Northeast side, commencing at its intersection with Oriental Parade (Grid coordinates X= 1,749,484.7 m Y= 5,427,224.5m) and extending in a northerly direction following the north-eastern footpath for 256.6 metres.</i>
Oriental Parade	<i>Shared path, at all times. Pedestrians have priority.</i>	<i>Northwest side, commencing at its intersection with Oriental Parade (Grid coordinates X= 1,749,484.7 m Y= 5,427,224.5m) and extending in a northerly direction following the north-western footpath for 145.4 metres.</i>

Add to Schedule A (Time limited) of the Traffic Restrictions Schedule

Column One	Column Two	Column Three
Mein Street	<i>P120 parking 8am-8pm Monday- Sunday</i>	<i>South side, commencing 70 metres west of its intersection with Minerva Street (Grid coordinates X= 1,749,049.2m Y=5,425,221.3m) and extending in a westerly direction following the southern kerb line for 34.5 metres. (5 parallel parks)</i>
Mein Street	<i>P120 parking 8am-8pm Monday- Sunday</i>	<i>North side, commencing 23.2 metres east of its intersection with Riddiford Street (Grid coordinates X= 1,748,929.1m Y=5,425,204.8m) and extending in an</i>

We are proposing a change in your area

		<i>easterly direction following the northern kerb line for 35 metres. (6 parallel parks)</i>
Mein Street	<i>P120 parking 8am-8pm Monday- Sunday</i>	<i>North side, commencing 70 metres east of its intersection with Riddiford Street (Grid coordinates X= 1,748,929.1m Y=5,425,204.8m) and extending in an easterly direction following the northern kerb line for 24 metres. (5 parallel parks)</i>
Mein Street	<i>P10, pick up and drop off 8:30am-9am and 2:45pm -3:15pm Monday – Friday during school terms only.</i>	<i>South side, commencing 33.5 metres west of its intersection with Minerva Street (Grid coordinates X= 1,749,049.2m Y=5,425,221.3m) and extending in a westerly direction following the southern kerb line for 52 metres. (8 parallel parks)</i>
Mein Street	<i>P120 parking 9-2:45pm, 3:15-8pm Monday – Friday, 8am-8pm Saturday - Sunday</i>	<i>South side, commencing 33.5 metres west of its intersection with Minerva Street (Grid coordinates X= 1,749,049.2m Y=5,425,221.3m) and extending in a westerly direction following the southern kerb line for 52 metres. (8 parallel parks)</i>
Hall Street	<i>P10, 8am-8pm Monday- Sunday</i>	<i>South side, commencing 8 metres west of its intersection with Riddiford Street (Grid coordinates X= 1,748,911.6m Y=5,425,198.4m) and extending in a westerly direction following the southern kerb line for 18 metres. (2 parallel parks)</i>
Hall Street	<i>P30, 8am-8pm Monday – Sunday</i>	<i>North side, commencing 8 metres west of its intersection with Riddiford Street (Grid coordinates X= 1,748,906.3 m Y= 5,425,208.3 m) and extending in a westerly direction following the northern kerb line for 18 metres. (3 parallel parks)</i>
Riddiford Street	<i>P10 pick up and drop off 8:30am-9am and 2:45pm-3:15pm Monday – Friday during School terms only</i>	<i>East side, commencing 39.4 meters south of its intersection with Mein Street (Grid coordinates X= 1,748,927.2m Y=5,425,194.9 And extending in a southerly direction following the eastern kerb line for 24 meters. (4 parallel parks)</i>
Riddiford Street	<i>P60, 9am-2:45pm and 3:15pm-8pm Monday – Friday, 8am-8pm Saturday - Sunday</i>	<i>East side, commencing 39.4 meters south of its intersection with Mein Street (Grid coordinates X= 1,748,927.2m Y=5,425,194.9 And extending in a southerly direction following the eastern kerb line for 24 meters. (4 parallel parks)</i>

We are proposing a change in your area

Drummond Street	P10, 8am-8pm Monday- Sunday	North side, commencing 5 metres east of its intersection with Adelaide Road (Grid coordinates X= 1,748,900.3m Y= 5,425,847.4m) and extending in an easterly direction following the northern kerb line for 12 metres. (2 parallel parks)
Broomhedge Street	P120, 3pm-8pm Monday – Friday, 8am-8pm Saturday- Sunday	North side, commencing 5 metres east of its intersection with Adelaide Road (Grid coordinates X= 1,748,923.3m Y= 5,425,937.1m) and extending in an easterly direction following the northern kerb line for 12 metres. (2 parallel parks)
Douglas street	P120, 8am-8pm Monday – Sunday	North side, commencing 5 metres west of its intersection with Adelaide Road (Grid coordinates X= 1,748,966.9m Y= 5,426,167.2m) and extending in a westerly direction following the northern kerb line for 12 metres. (2 parallel parks)

Add to Schedule F (Metered Parking) of the Traffic Restrictions Schedule

Column One	Column Two	Column Three
Cambridge Terrace	Metered parking, P10 hours Maximum, Monday to Sunday 8am-8pm	West side, commencing 35.5 metres north of its intersection with Barker Street (Grid Coordinates X=1,749,125.4m, Y=5,426,586.6m) and extending in a northerly direction following the western kerb line for 24 metres. (4 parallel parking spaces)
Kent Terrace	Metered parking, P10 hours Maximum, Monday to Sunday 8am-8pm	West side, commencing 182.5 metres south of its intersection with the southern kerbline of Pirie Street (Grid coordinates x= 1,7492,10.9 m, y= 5,426,723.1 m), and extending in a southerly direction following the western kerbline for 27 metres. (4 parallel carparks)
Kent Terrace	Metered parking, P10 hours Maximum, Monday to Sunday 8am-8pm	West side, commencing 78 metres south of its intersection with the southern kerbline of Pirie Street (Grid coordinates x= 1,7492,10.9 m, y= 5,426,723.1 m), and extending in a southerly direction following the western kerbline for 27 metres. (4 parallel carparks)

Add to Schedule E (Resident parking) of the Traffic Restrictions Schedule

Column One	Column Two	Column Three

We are proposing a change in your area

Oriental Parade, slip lane	No Stopping Except for Authorised Resident Vehicles, At All Times	Southeast side, commencing 91.8 metres east of its intersection with Kent Terrace (Grid coordinates x= 1,749,440.2 m, y= 5,427,161.2 m), and extending in a north easterly direction following the south-eastern kerb line for 6 metres. (1 parallel carpark)
Oriental Parade, slip lane	No Stopping Except for Authorised Resident Vehicles, At All Times	Southeast side, commencing 99 metres east of its intersection with Kent Terrace (Grid coordinates x= 1,749,440.2 m, y= 5,427,161.2 m), and extending in a south-eastern direction following the south-eastern kerb line for 22.5 metres. (4 parallel carpark)

Delete from Schedule A (Time limited) of the Traffic Restrictions Schedule

Column One	Column Two	Column Three
Mein Street	P60, Monday to Saturday, 8:00am - 6:00pm	South side, commencing 70 metres west of its intersection with Minerva Street and extending in a westerly direction following the southern kerbline for 34.5 metres.
Mein Street	P10, Monday to Saturday, 8:00am - 6:00pm	South side, commencing 33.5 metres west of its intersection with Minerva Street and extending in a westerly direction following the southern kerbline for 24.5 metres.
Hall Street	P5, Monday to Saturday, 8:00am - 6:00pm	South side, commencing 8 metres west of its intersection with Riddiford Street and extending in a westerly direction following the southern kerbline for 18 metres.
Riddiford Street	P60, Monday to Sunday, 8:00am - 6:00pm	West side, commencing 21 metres north of its intersection with Hall Street and extending in a northerly direction following the western kerbline for 19 metres.
Riddiford Street	P60, Monday to Sunday, 8:00am - 6:00pm	West side, commencing 56 metres north of its intersection with Hall Street and extending in a northerly direction following the western kerbline for 11 metres.
Riddiford Street	P60, Monday to Sunday, 8:00am - 6:00pm	West side, commencing 79 metres north of its intersection with Hall Street and extending in a northerly direction following the western kerbline for 29 metres.
Riddiford Street	P60, Monday to Sunday, 8:00am - 6:00pm	West side, commencing 117 metres north of its intersection with Hall Street and extending in a northerly direction following the western kerbline for 17 metres.

We are proposing a change in your area

Riddiford Street	<i>P60, Monday to Sunday, 8:00am - 6:00pm</i>	<i>West side, commencing 138 metres north of its intersection with Hall Street and extending in a northerly direction following the western kerbline for 6 metres.</i>
Riddiford Street	<i>P60, Monday to Sunday, 8:00am - 6:00pm</i>	<i>West side, commencing 154 metres north of its intersection with Hall Street and extending in a northerly direction following the western kerbline for 12 metres.</i>
Riddiford Street	<i>P60, Monday to Sunday, 8:00am - 6:00pm</i>	<i>East side, commencing 218 metres south of an extension of the southern kerbline of John Street and extending in a southerly direction following the eastern kerbline for 66 metres.</i>
Riddiford Street	<i>P60, Monday to Sunday, 8:00am - 6:00pm</i>	<i>East side, commencing 316 metres south of an extension of the southern kerbline of John Street and extending in a southerly direction following the eastern kerbline for 59 metres.</i>
Riddiford Street	<i>P10, at all times</i>	<i>West side, commencing 179 metres north of its intersection with Hall Street and extending in a northerly direction following the western kerbline for 6 metres.</i>
Riddiford Street	<i>P15, Monday to Sunday 8:00am - 5:00pm.</i>	<i>East side, commencing 34 metres south of its intersection with John Street and Adelaide Road (Grid coordinates x= 1748841.0 m, y= 5425600.3 m), and extending in a southerly direction following the eastern kerbline for 20.5 metres.</i>
Riddiford Street	<i>P15, Monday to Sunday 8:00am - 5:00pm.</i>	<i>East side, commencing 61.5 metres south of its intersection with John Street and Adelaide Road (Grid coordinates x= 1748841.0 m, y= 5425600.3 m), and extending in a southerly direction following the eastern kerbline for 10.5 metres.</i>
Riddiford Street	<i>P60, Monday to Sunday, 8:00am - 6:00pm</i>	<i>East side, commencing 316 metres south of an extension of the southern kerbline of John Street and extending in a southerly direction following the eastern kerbline for 59 metres.</i>
Adelaide Road	<i>P60, Monday to Friday, 9:00am - 4:00pm</i>	<i>West side, commencing 85 metres north of its intersection with Drummond Street (Grid coordinates, x= 488864.2m, y= 5425850.5m), and extending in a northerly direction following the western kerbline for 16 metres (3 parallel parking spaces).</i>
Adelaide Road	<i>P60, Monday to Friday, 9:00am - 4:00pm</i>	<i>West side, commencing 6 metres north of its intersection with Drummond Street (Grid coordinates, x= 488864.2m, y= 5425850.5m), and extending in a northerly direction following the western kerbline for 13 metres (2 parallel parking spaces).</i>

We are proposing a change in your area

Adelaide Road	P60, Monday to Friday, 9:00am - 4:00pm	West side, commencing 55 metres north of its intersection with Drummond Street (Grid coordinates, x= 488864.2 m, y= 5425850.5 m), and extending in a northerly direction following the western kerbline for 22 metres (4 parallel parking spaces).
Adelaide Road	P60, Monday to Saturday, 9:00am - 6:00pm	West side, commencing 60 metres north of its intersection with King Street and extending in a northerly direction following the western kerbline for 23.5 metres.
Cambridge Terrace	P60, Monday to Saturday 8:00am - 6:00pm	West side, commencing 11.5 metres north of its intersection with Barker Street (Grid Coordinates X=2659144.967126 m, Y=5988299.76282 m) and extending in a northerly direction following the kerbline for 50 metres.
Roxburgh Street	P60, Monday to Saturday, 8:00am - 6:00pm	Westside commencing 24 metres of its intersection with Majoribanks Street and extending in a northerly direction following the western kerbline for 6.0 metres.
Roxburgh Street	P60, Monday to Saturday, 8:00am - 6:00pm	West side, commencing 24 metres west of its intersection with Majoribanks Street and extending in a northerly direction following the western kerbline for 12.5 metres.

Delete from Schedule B (Class restricted) of the Traffic Restrictions Schedule

Column One	Column Two	Column Three
Riddiford Street	Taxi stands, At all times	East side, commencing 200 metres south of an extension of the southern kerbline for John Street and extending in a southerly direction following the eastern kerbline for 18 metres.
Riddiford Street	Loading Zone, P10 At all times	East side, commencing 26 metres south of its intersection with John Street and Adelaide Road (Grid coordinates x= 1748841.0 m, y= 5425600.3 m), and extending in a southerly direction following the eastern kerbline for 8 metres.
Adelaide Road	Loading Zone, P30 Monday to Friday 8:00am - 4:00pm.	East side, commencing 55.5 metres south of its intersection with Oxford Street (Grid coordinates x=1,748,952.1, y = 5,426,047.8), and extending in a southerly direction following the eastern kerbline for 10 metres.

We are proposing a change in your area

Adelaide Road	<i>Bus Stop, At all times</i>	<i>West side, commencing 92 metres north of its intersection with John Street and extending in a northerly direction following the western kerbline for 32 metres.</i>
Adelaide Road	<i>Bus Stop, At all times</i>	<i>West side, commencing 50 metres south of its intersection with King Street and extending in a southerly direction following the western kerbline for 34 metres.</i>
Adelaide Road	<i>Bus Stop, At all times</i>	<i>West side, commencing 100.5 metres north of its intersection with Drummond Street and extending in a northerly direction following the western kerbline for 38 metres.</i>
Adelaide Road	<i>Bus Lane, Monday to Friday 4 - 6pm, lane may be used by bicycles, motorcycles, emergency vehicles, traffic enforcement, 'in-service' taxis, and any vehicle for 50m turning into or out of a side street or property.</i>	<i>Kerbside south-bound lane, commencing 22 metres south of its intersection with Rugby Street (Grid coordinates x= 1749012.8 m, y= 5426273.8 m), and extending in a southerly direction following the eastern kerbline and incorporating all kerbside parking spaces for 650 metres.</i>
Adelaide Road	<i>Bus Lane, Monday to Friday 7 - 9am, lane may be used by bicycles, motorcycles, emergency vehicles, traffic enforcement, 'in-service' taxis, and any vehicle for 50m turning into or out of a side street or property.</i>	<i>Kerbside north-bound lane, commencing 37 metres north of its intersection with John Street (Grid coordinates x= 1748827.9 m, y= 5412617.9 m), and extending in a northerly direction following the western kerbline and incorporating all kerbside parking spaces for 591metres.</i>
Cambridge Terrace	<i>Taxi stand, at all times</i>	<i>East side, commencing 73 metres north of its intersection with Elizabeth Street (Grid Coordinates X=2659295.727906 m, Y=5988608.045005 m) and extending in a northerly direction following the kerbline for 46.5 metres.</i>
Kent Terrace	<i>Loading Zone P10, Monday to Saturday 8:00am - 6:00pm, Goods Vehicles And Authorised Vehicles Only</i>	<i>East side, following the kerb line 31.5 metres southwest of its intersection with Oriental Parade (Grid coordinates x= 1749428.5 m, y= 5427148.2 m), and extending in a southerly direction for 5.5 metres.</i>

We are proposing a change in your area

Kent Terrace	<i>Bus Parking, At all times</i>	<i>West side, commencing 26.5 metres south of its intersection with the southern kerbline of Majoribanks Street (Grid Coordinates X=2659389.602642 m, Y=5988777.59823 m) and extending in a southerly direction following the kerbline for 21 metres.</i>
Cambridge Terrace	<i>Loading Zone, P10, At Other Times</i>	<i>West side, commencing 6.5 metres north of its intersection with Alpha Street (Grid Coordinates X=2659315.675928 m, Y=5988680.838196 m) and extending in a northerly direction following the kerbline for 20.5 metres.</i>
Roxburgh Street	<i>Loading Zone, Goods Vehicles Only, P30 Monday to Saturday, 8:00am - 6:00pm</i>	<i>East side, commencing 68.5 metres south of its intersection with Caroline Street and extending in a southerly direction following the eastern kerbline for 14 metres.</i>

Delete from Schedule F (Metered Parking) of the Traffic Restrictions Schedule

Column One	Column Two	Column Three
Cambridge Terrace	<i>Metered parking, P10 hours Maximum, Monday to Thursday 8:00am - 6:00pm, Friday 8:00am - 8:00pm, Saturday and Sunday 8:00am - 6:00pm</i>	<i>East side, commencing 67.5 metres north of its intersection with Buckle Street (Grid coordinates x= 1749066.1 m, y= 5426471.5 m), and extending in a northerly direction following the kerbline for 16.5 metres. (3 parallel carparks)</i>
Cambridge Terrace	<i>Metered parking, P10 hours Maximum, Monday to Thursday 8:00am - 6:00pm, Friday 8:00am - 8:00pm, Saturday and Sunday 8:00am - 6:00pm</i>	<i>East side, commencing 111 metres north of its intersection with Buckle Street (Grid coordinates x= 1749066.1 m, y= 5426471.5 m), and extending in a northerly direction following the kerbline for 71.5 metres. (12 parallel carparks)</i>
Cambridge Terrace	<i>Metered parking, P10 hours Maximum, Monday to Thursday 8:00am - 6:00pm, Friday 8:00am - 8:00pm, Saturday and Sunday 8:00am - 6:00pm</i>	<i>East side, commencing 209.5 metres north of its intersection with Buckle Street (Grid coordinates x= 1749066.1 m, y= 5426471.5 m), and extending in a northerly direction following the kerbline for 58.5 metres. (10 parallel carparks)</i>

We are proposing a change in your area

Cambridge Terrace	Metered parking, P10 hours Maximum, Monday to Thursday 8:00am - 6:00pm, Friday 8:00am - 8:00pm, Saturday and Sunday 8:00am - 6:00pm	East side, commencing 10 metres north of its intersection with Vivian Street (Grid coordinates x= 1749205.7 m, y= 5426736.3 m), and extending in a northerly direction following the kerbline for 115.5 metres. (19 parallel carparks)
Kent Terrace	Metered parking, P120 Maximum, Monday to Thursday 8:00am - 4:00pm, Friday 8:00am - 4:00pm, 6:00pm - 8:00pm, Saturday and Sunday 8:00am - 6:00pm	East side, following the kerb line 37 metres southwest of its intersection with Oriental Parade (Grid coordinates x= 1749428.5 m, y= 5427148.2 m), and extending in a southerly direction for 23 metres.
Oriental Parade	P120 Maximum, Monday to Thursday 8:00am - 6:00pm, Friday 8:00am - 8:00pm, Saturday and Sunday 8:00 - 6:00pm	Southeast side, following the kerbline 569 metres west of its intersection with Oriental Parade (Slip Lane 2 near Oriental Terrace) (Grid coordinates x= 1750077.4 m, y= 5427398.4 m), and extending in a south-westerly direction for 5.5 metres. (1 parallel carpark)
Oriental Parade	P120 Maximum, Monday to Thursday 8:00am - 6:00pm, Friday 8:00am - 8:00pm, Saturday and Sunday 8:00 - 6:00pm	Southeast side, following the kerbline 542.5 metres west of its intersection with Oriental Parade (Slip Lane 2 near Oriental Terrace) (Grid coordinates x= 1750077.4 m, y= 5427398.4 m), and extending in a south-westerly direction for 22.5 metres. (4 parallel carparks)
Oriental Parade	P120 Maximum, Monday to Thursday 8:00am - 6:00pm, Friday 8:00am - 8:00pm, Saturday and Sunday 8:00 - 6:00pm	Southeast side, following the kerbline 569 metres west of its intersection with Oriental Parade (Slip Lane 2 near Oriental Terrace) (Grid coordinates x= 1750077.4 m, y= 5427398.4 m), and extending in a south-westerly direction for 5.5 metres. (1 parallel carpark)

Delete from Schedule E (Resident Parking) of the Traffic Restrictions Schedule

Column One	Column Two	Column Three
Oriental Parade	No Stopping Except for Authorised Resident Vehicles, At All Times	Northwest side, commencing 23.5 metres southwest of its intersection with Oriental Parade (Grid Coordinates X=2659532.575936 m, Y=5988945.499657 m) and extending in a south-westerly direction following the kerbline for 10 metres. (2 parallel carparks)

We are proposing a change in your area

<i>Oriental Parade</i>	<i>No Stopping Except for Authorised Resident Vehicles, At All Times</i>	<i>Northwest side, commencing 8.5 metres southwest of its intersection with Oriental Parade (Grid Coordinates X=2659532.575936 m, Y=5988945.499657 m) and extending in a south-westerly direction following the kerbline for 9.5 metres. (2 parallel carparks)</i>
-------------------------------	--	--

Prepared By: Renee Corlett **(Transitional Programme– Project lead)**

Approved By: Dennis Davis/ Claire Pascoe **(Principal Transport Engineer)**
(Manager Transitional Cycleways)

Date: 09/08/2022