

# We are proposing a change in your area

This report gives an overview of the changes proposed on Evans Bay Parade between Cobham Drive to just north of Greta Point and details of the traffic-related decisions (resolutions) that will be required. You'll find more information about the proposal, including plans and artist's impressions, online at [www.transportprojects.org.nz/evansbay](http://www.transportprojects.org.nz/evansbay).

## Proposal:

<b>Reference</b>	TR121-21 Evans Bay Parade, Wellington – Cycle Lanes; Bus stops; Give way/Stop; Pedestrian crossing; Time Limited parking; NSAAT
<b>What we'd like to do</b>	<p>We propose to construct a two-way bike path and separate footpath along the western side of Evans Bay Parade, replacing the existing shared path. This project will result in changes to some areas that are currently used for on-street parking, including:</p> <ul style="list-style-type: none"> <li>• rearrangement of on-street parking – there will be new parking spaces available in some places, and many spaces removed in others.</li> <li>• new timing restrictions in some areas</li> <li>• removal of three bus stop pairs</li> <li>• new pedestrian crossings</li> </ul> <p>More information about the parking changes can be found in the Parking Management Plan.</p>
<b>Why we are proposing the change</b>	<p>This proposal is about completing Tahitai, the walking and bike connection from the east. Planning started about five years ago with drop-in sessions at the ASB sports centre, a community working group, community consultation, and a 2018 Council decision and vision to develop this part of Te Aranui o Pōneke/the Great Harbour Way with a seaward-side footpath and two-way bike path.</p> <p>With the climate emergency and the city's goal to be a net zero carbon capital by 2050, it's even more critical people of all ages and abilities can get about safely and sustainably. Developing a network of connected bike and walking routes is part of building a future where that's possible.</p>
<b>Location – where we propose to make the change</b>	217-517 Evans Bay Parade (from NIWA at Greta Point to the intersection with Cobham Drive)
<b>Impact</b>	<p>To achieve a high quality and safe route for everyone moving through this area, we need to use the road space in a different way. In narrow areas, this will mean less, or very little, space for on-street parking. Reducing on-street parking provides:</p> <ul style="list-style-type: none"> <li>• space for a two-way bike path and dedicated footpath separated from motor vehicle traffic</li> <li>• appropriate bus stop entry and exit tapers to allow buses to efficiently use bus stops without blocking vehicle movement on the road</li> <li>• safe visibility entering and exiting driveways</li> <li>• space for heavy vehicles and buses to travel in both directions without having to cross the centre line.</li> </ul>

# We are proposing a change in your area

	<p>The reallocation of road space will make things safer and create more space for people. However, the proposed changes will affect some people, particularly residents without off-street parking and people who drive to venues such as the Yacht Club, Sea Scouts hall and Hataitai Beach.</p> <p>There are approximately 292 on-street car parking spaces along Evans Bay Parade between NIWA and Cobham Drive. To improve the area and more fairly balance the needs of people who walk, bike, drive, and use the area in different ways, we propose to reduce the amount of parking by approximately 131 spaces, reducing overall supply by 45 percent. Parking removal is not evenly spread, with most of the parking loss occurring in the tightest section from Hataitai Beach to the public boat ramp on both sides of the road.</p> <p>There will be a slight increase in parking through Greta Point and around Cog Park. We also propose to make some changes to parking restrictions, including providing more short-term spaces for goods and services vehicles, and drop-offs and pick-ups, which will improve visitor access to business and recreation facilities.</p> <p>Pedestrians benefit from the separation from people on bikes and having additional safe places to cross the road.</p> <p>Bus users benefit from a more efficient bus service that does not stop as often, and from having more accessible bus stops.</p>
<p><b>How this relates to the parking policy</b></p>	<ul style="list-style-type: none"> <li>• Support shift in the type of transport used – facilitate a shift to using active (eg walking and cycling) and public transport through parking management and pricing, to move more people driving fewer vehicles.</li> <li>• Support safe movement – facilitate the safe and efficient movement of people and goods by focusing on people moving along transport routes rather than people parking or storing stationary vehicles.</li> <li>• Support business wellbeing – ensure parking management and pricing controls support economic activity in the central city, suburban centres and mobile trades and services. This is relevant for the changes we are proposing in the Greta Point area.</li> </ul>
<p><b>Additional Information</b></p>	<ul style="list-style-type: none"> <li>• Average daily bus passenger number: 300-400 passengers per day</li> <li>• Average daily traffic count: 11,000-14,000 vehicles, 4-6% heavy vehicles</li> <li>• To view the legal description for this traffic resolution, an electronic copy of this report will be available on the Council’s website from Tuesday 14 September 2021 at <a href="https://transportprojects.org.nz/evansbay">transportprojects.org.nz/evansbay</a> or you can call (04) 499 4444 and we will send one out to you.</li> </ul>
<p><b>Feedback</b></p>	<p>Information and plans will be available on <a href="https://transportprojects.org.nz/evansbay">transportprojects.org.nz/evansbay</a> from <b>14 September</b>. You can provide feedback about the draft plans and changes that would be required to put them in place (traffic resolutions) until 5 pm on Tuesday <b>12 October</b>.</p>

# We are proposing a change in your area

You'll also be able to find out more at two online engagement sessions. The first will be held **Tuesday 21 September from 7:30 pm**. The second one will be on **Wednesday, 29 September, 7:30-8:30pm**.

Unfortunately, due to Covid-19 lockdown restrictions, we are unable to host in-person drop-in sessions as initially planned.

Now is the opportunity for everyone who is interested in this area to share thoughts and suggestions so adjustments can be made before Councillors make decisions about this section in late November.

Please provide your feedback online at [transportprojects.org.nz/evansbay](https://transportprojects.org.nz/evansbay) by 5 pm, **12 October 2021**.

If submitting online isn't an option for you, please phone us on 09 499 4444 or email [evansbay@wcc.govt.nz](mailto:evansbay@wcc.govt.nz) and we will send you a paper form or assist you in whatever way works best for you.

What we do with your personal information:

- All submissions (including name, but not contact details) are provided in their entirety to elected members and made available to the public at our office and on our website.
- Personal information (including contact details) will also be used for the administration of the consultation process including informing you of the outcome of the consultation.
- All information collected will be held by Wellington City Council, 113 The Terrace, Wellington, with submitters having the right to access and correct personal information.
- You can read our [Privacy Statement](#) online

## Next Steps

1. Feedback collated by Friday, 12 November 2021.
2. The proposal will go to the Pūroro Āmua / Planning and Environment Committee on Wednesday, 24 November 2021.
3. If approved, the proposal will proceed to detailed design, which will take 9-12 months.









# We are proposing a change in your area

Absolutely Positively  
Wellington City Council

Me Heke Ki Pōneke



PRELIMINARY ONLY  
FOR CLIENT COMMENTS

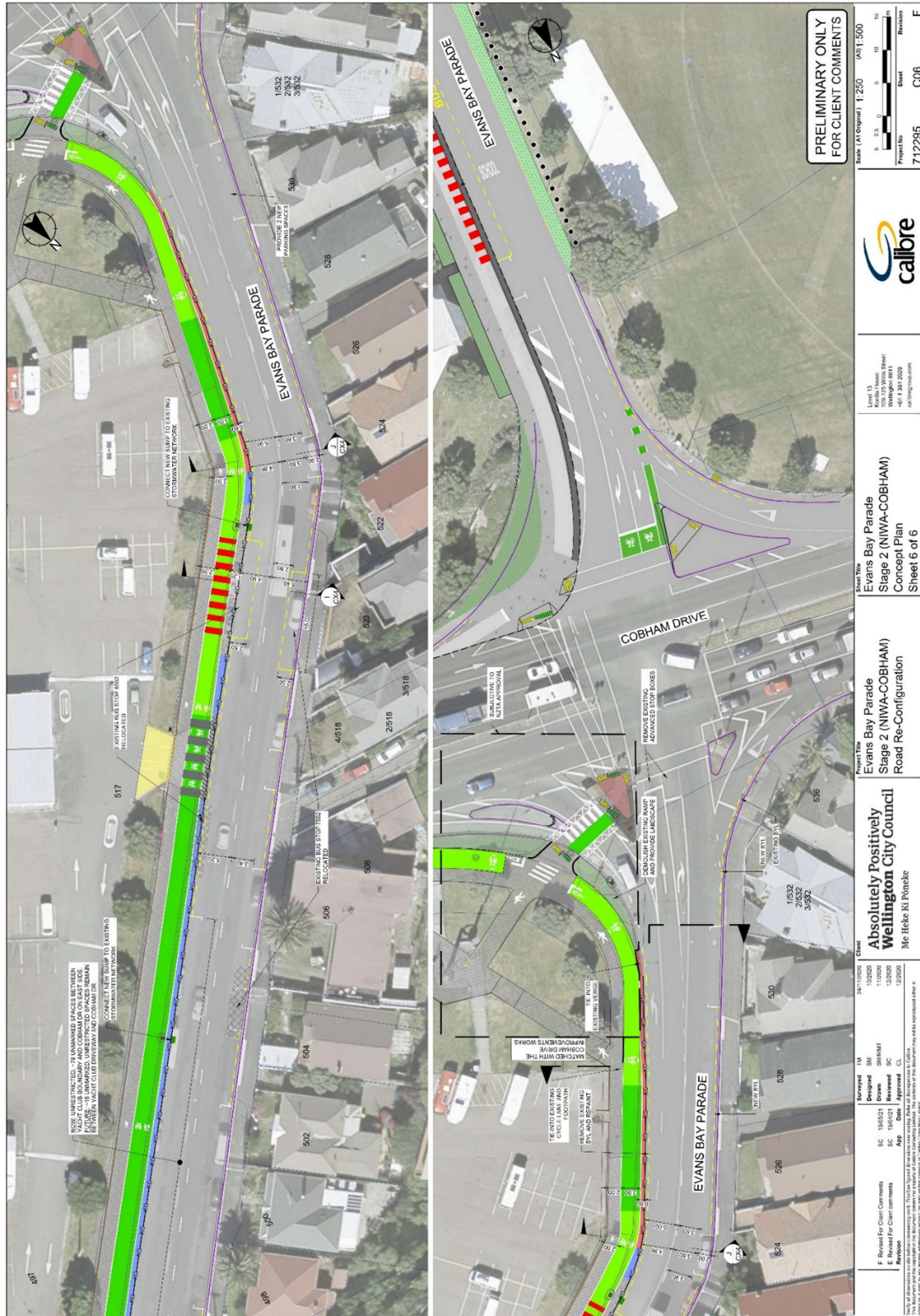
<p>2023 Wellington City Council. All rights reserved. This document is the property of Wellington City Council. It is not to be distributed, copied, or used for any purpose other than that for which it was prepared. Wellington City Council is not responsible for any loss or damage arising from the use of this document.</p>	<p>Client: 2171100005                  Project Title: Evans Bay Parade Stage 2 (NIVA-COBHAM) Road Re-Configuration                  Project No: 120000                  Design No: 120000                  App No: 120000                  Date: 12/2023</p>	<p>Client: Absolutely Positively Wellington City Council                  Me Heke Ki Pōneke</p>	<p>Scale: (A1 Original) 1:250 (A4) 1:500                  Level: 3                  100x125 (W) x 80x110 (H)                  Date: 14.8.2023                  Call: 0448 838 2079                  Email: call@wcc.govt.nz</p>	<p>Project No: 712295                  Sheet: C05                  Revision: F</p>	<p>Callibre</p>
--	--	---	---	--	-----------------



# We are proposing a change in your area

Absolutely Positively  
Wellington City Council

Me Heke Ki Pōneke



**PRELIMINARY ONLY  
FOR CLIENT COMMENTS**

Scale: (As Original) 1:250 (A4) 1:500

Project No: 7112295

Client: CO6

Revision: F



Drawn By: [Name]  
Checked By: [Name]  
Date: 13 Jul 2023  
Drawing No: 7112295-006

Project Title: Evans Bay Parade Stage 2 (NWA-COBHAM) Concept Plan Sheet 6 of 6

Project Title: Evans Bay Parade Stage 2 (NWA-COBHAM) Road Re-Configuration

Absolutely Positively  
Wellington City Council  
Me Heke Ki Pōneke

Rev	Date	App	By	Check	By	Notes
1	13/07/2023	Approved	CL	Reviewed	SC	Final Design
2	13/07/2023	Approved	CL	Reviewed	SC	Final Design
3	13/07/2023	Approved	CL	Reviewed	SC	Final Design
4	13/07/2023	Approved	CL	Reviewed	SC	Final Design
5	13/07/2023	Approved	CL	Reviewed	SC	Final Design
6	13/07/2023	Approved	CL	Reviewed	SC	Final Design
7	13/07/2023	Approved	CL	Reviewed	SC	Final Design
8	13/07/2023	Approved	CL	Reviewed	SC	Final Design
9	13/07/2023	Approved	CL	Reviewed	SC	Final Design
10	13/07/2023	Approved	CL	Reviewed	SC	Final Design

# We are proposing a change in your area

## Legal Description:

Add to Schedule A (Time Limited) of the Traffic Restrictions Schedule

Column One	Column Two	Column Three
<b>Evans Bay Parade</b>	<i>P90, At All Times</i>	<i>West side, commencing 280 metres north of its intersection with Rata Road (Grid Coordinates x=1750712.59m, y=5425815.80m), and extending in a northerly direction following the western kerb line for 6 metres.</i>
<b>Evans Bay Parade</b>	<i>P10, Monday to Sunday, 8am - 6pm</i>	<i>West side, commencing 258 metres north of its intersection with Rata Road (Grid Coordinates x=1750703.99m, y=5425789.89m), and extending in a northerly direction following the western kerb line for 5.5 meters.</i>
<b>Evans Bay Parade</b>	<i>P10, Monday to Sunday, 8am - 6pm</i>	<i>East side, commencing 282 metres south of its intersection with Rata Road (Grid Coordinates x=1750722.82m, y=5425794.99m), and extending in a southerly direction following the eastern kerb line for 11.4 meters.</i>
<b>Evans Bay Parade</b>	<i>P180, Monday to Sunday, 8am - 6pm</i>	<i>East side, commencing 9.4 metres south of its intersection with Rata Road (Grid Coordinates x=1750722.82m, y=5425794.99m), and extending in a southerly direction following the eastern kerb line for 6 meters.</i>
<b>Evans Bay Parade</b>	<i>P10, Monday to Sunday, 8am - 6pm</i>	<i>East side, commencing 3.4 metres south of its intersection with Rata Road (Grid Coordinates x=1750722.82m, y=5425794.99m), and extending in a southerly direction following the eastern kerb line for 6 meters.</i>
<b>Evans Bay Parade</b>	<i>P180, Monday to Sunday, 8am - 6pm</i>	<i>East side, commencing 6 metres north of its intersection with Rata Road (Grid Coordinates x=1750722.82m, y=5425794.99m), and extending in a northerly direction following the eastern kerb line for 109.5 metres.</i>
<b>Evans Bay Parade</b>	<i>P90, At All Times</i>	<i>East side, commencing 213 metres north of its intersection with Rata Road (Grid Coordinates x=1750722.82m, y=5425794.99m), and extending in a</i>

# We are proposing a change in your area

		<i>northerly direction following the eastern kerb line for 24 meters.</i>
<b>Evans Bay Parade</b>	<i>P90, At All Times</i>	<i>East side, commencing 262 metres north of its intersection with Rata Road (Grid Coordinates x=1750722.82m, y=5425794.99m), and extending in a northerly direction following the eastern kerb line for 55.1 meters.</i>
<b>Evans Bay Parade</b>	<i>P90 &amp; P10, Monday to Sunday, 8am - 6pm</i>	<i>East side, commencing 412 metres north of its intersection with Rata Road (Grid Coordinates x=1750722.82m, y=5425794.99m), and extending in a northerly direction following the eastern kerb line for 27.5 metres.</i>

## Add to Schedule B (Class Restricted) of the Traffic Restrictions Schedule

<b>Column One</b>	<b>Column Two</b>	<b>Column Three</b>
<b>Evans Bay Parade</b>	<i>Bus Stop, At All Times</i>	<i>West side, commencing 394 metres south of its intersection with Rata Road (Grid Coordinates x=1750703.99m, y=5425789.89m), and extending in a southerly direction following the western kerb line for 15 meters.</i>  <i>Stop # 7550</i>
<b>Evans Bay Parade</b>	<i>Bus Stop, At All Times</i>	<i>Add, west side, commencing 100 metres east of its intersection with Wellington Road (Grid Coordinates x=1750298.09m, y=5425017.21m), and extending in a northerly direction following the western kerb line for 15 metres.</i>  <i>Stop # 7552</i>
<b>Evans Bay Parade</b>	<i>Bus Stop, At All Times</i>	<i>East side, commencing 83 metres east of its intersection with Wellington Road (Grid Coordinates x=1750314.81m, y=5425018.91m), and extending in a northerly direction following the eastern kerb line for 15 metres.</i>  <i>Stop # 6552</i>
<b>Evans Bay Parade</b>	<i>Bus Stop, At All Times</i>	<i>East side, commencing 420 metres south of its intersection with Rata Road (Grid Coordinates x=1750722.82m, y=5425794.99m), and extending in a</i>

# We are proposing a change in your area

		<p>southerly direction following the eastern kerb line for 15 meters.</p> <p>Stop # 6550</p>
<b>Evans Bay Parade</b>	<i>Bus Stop, At All Times</i>	<p>East side, commencing 517 metres east of its intersection with Rata Road (Grid Coordinates x=1750722.82m, y=5425794.99m), and extending in a northerly direction following the eastern kerb line for 15 metres.</p> <p>Stop # 6546</p>

## Add to Schedule D (No Stopping) of the Traffic Restrictions Schedule

Column One	Column Two	Column Three
<b>Evans Bay Parade</b>	<i>No Stopping, At All Times</i>	<p>West side, commencing 102 metres north of its intersection with Rata Road (Grid Coordinates x= 750703.99m, y=5425789.89m), and extending in a northerly direction following the western kerb line for 56 meters.</p>
<b>Evans Bay Parade</b>	<i>No Stopping, At All Times</i>	<p>West side, commencing 24 metres north of its intersection with Rata Road (Grid Coordinates x= 750703.99m, y=5425789.89m), and extending in a northerly direction following the western kerb line for 43.4 meters.</p>
<b>Evans Bay Parade</b>	<i>No Stopping, At All Times</i>	<p>West side, commencing 2 metres south of its intersection with Rata Road (Grid Coordinates x= 750703.99m, y=5425789.89m), and extending in a southerly direction following the western kerb line for 101.3 meters.</p>
<b>Evans Bay Parade</b>	<i>No Stopping, At All Times</i>	<p>West side, commencing 116 metres south of its intersection with Rata Road (Grid Coordinates x= 750703.99m, y=5425789.89m), and extending in a southerly direction following the western kerb line for 226.3 meters.</p>
<b>Evans Bay Parade</b>	<i>No Stopping, At All Times</i>	<p>West side, commencing 355 metres south of its intersection with Rata Road (Grid Coordinates x= 750703.99m, y=5425789.89m), and extending in a southerly direction following the western kerb line for 40.7 meters.</p>

## We are proposing a change in your area

<b>Evans Bay Parade</b>	<i>No Stopping, At All Times</i>	<i>West side, commencing 410 metres south of its intersection with Rata Road (Grid Coordinates x= 750703.99m, y=5425789.89m), and extending in a southerly direction following the western kerb line for 34.5 meters.</i>
<b>Evans Bay Parade</b>	<i>No Stopping, At All Times</i>	<i>West side, commencing 458 metres south of its intersection with Rata Road (Grid Coordinates x=1750703.99m, y=5425789.89m), and extending in a southerly direction following the western kerb line for 30.7 meters.</i>
<b>Evans Bay Parade</b>	<i>No Stopping, At All Times</i>	<i>West side, commencing 494.7 metres south of its intersection with Rata Road (Grid Coordinates x=1750703.99m, y=5425789.89m), and extending in a southerly direction following the western kerb line for 4.7 meters.</i>
<b>Evans Bay Parade</b>	<i>No Stopping, At All Times</i>	<i>West side, commencing 529.4 metres south of its intersection with Rata Road (Grid Coordinates x=1750703.99m, y=5425789.89m), and extending in a southerly direction following the western kerb line for 7.2 meters.</i>
<b>Evans Bay Parade</b>	<i>No Stopping, At All Times</i>	<i>West side, commencing 542.6 metres south of its intersection with Rata Road (Grid Coordinates x=1750703.99m, y=5425789.89m), and extending in a southerly direction following the western kerb line for 28.6 meters.</i>
<b>Evans Bay Parade</b>	<i>No Stopping, At All Times</i>	<i>West side, commencing 583.2 metres south of its intersection with Rata Road (Grid Coordinates x=1750703.99m, y=5425789.89m), and extending in a southerly direction following the western kerb line for 5.2 meters.</i>
<b>Evans Bay Parade</b>	<i>No Stopping, At All Times</i>	<i>West side, commencing 594.4 metres south of its intersection with Rata Road (Grid Coordinates x=1750703.99m, y=5425789.89m), and extending in a southerly direction following the western kerb line for 36.4 meters.</i>
<b>Evans Bay Parade</b>	<i>No Stopping, At All Times</i>	<i>West side, commencing 644 metres south of its intersection with Rata Road (Grid Coordinates x=1750703.99m, y=5425789.89m), and extending in a southerly direction following the western kerb line for 8.6 meters.</i>

## We are proposing a change in your area

<b>Evans Bay Parade</b>	<i>No Stopping, At All Times</i>	<i>West side, commencing 658.6 metres south of its intersection with Rata Road (Grid Coordinates x=1750703.99m, y=5425789.89m), and extending in a southerly direction following the western kerb line for 4.2 meters.</i>
<b>Evans Bay Parade</b>	<i>No Stopping, At All Times</i>	<i>West side, commencing 494.7 metres south of its intersection with Rata Road (Grid Coordinates x=1750703.99m, y=5425789.89m), and extending in a southerly direction following the western kerb line for 4.7 meters.</i>
<b>Evans Bay Parade</b>	<i>No Stopping, At All Times</i>	<i>West side, commencing 668.8 metres south of its intersection with Rata Road (Grid Coordinates x=1750703.99m, y=5425789.89m), and extending in a southerly direction following the western kerb line for 15 meters.</i>
<b>Evans Bay Parade</b>	<i>No Stopping, At All Times</i>	<i>West side, commencing 689.8 metres south of its intersection with Rata Road (Grid Coordinates x=1750703.99m, y=5425789.89m), and extending in a southerly direction following the western kerb line for 43 meters.</i>
<b>Evans Bay Parade</b>	<i>No Stopping, At All Times</i>	<i>West side, commencing 738.8 metres south of its intersection with Rata Road (Grid Coordinates x=1750703.99m, y=5425789.89m), and extending in a southerly direction following the western kerb line for 3.6 meters.</i>
<b>Evans Bay Parade</b>	<i>No Stopping, At All Times</i>	<i>West side, commencing 754.4 metres south of its intersection with Rata Road (Grid Coordinates x=1750703.99m, y=5425789.89m), and extending in a southerly direction following the western kerb line for 5.2 meters.</i>
<b>Evans Bay Parade</b>	<i>No Stopping, At All Times</i>	<i>West side, commencing 790.6 metres south of its intersection with Rata Road (Grid Coordinates x=1750703.99m, y=5425789.89m), and extending in a southerly direction following the western kerb line for 11.6 meters.</i>
<b>Evans Bay Parade</b>	<i>No Stopping, At All Times</i>	<i>West side, commencing 808.5 metres south of its intersection with Rata Road (Grid Coordinates x=1750703.99m, y=5425789.89m), and extending in a southerly direction following the western kerb line for 6.1 meters.</i>

# We are proposing a change in your area

<b>Evans Bay Parade</b>	<i>No Stopping, At All Times</i>	<i>West side, commencing 826.6 metres south of its intersection with Rata Road (Grid Coordinates x=1750703.99m, y=5425789.89m), and extending in a southerly direction following the western kerb line for 12.3 meters.</i>
<b>Evans Bay Parade</b>	<i>No Stopping, At All Times</i>	<i>West side, commencing 844.9 metres south of its intersection with Rata Road (Grid Coordinates x=1750703.99m, y=5425789.89m), and extending in a southerly direction following the western kerb line for 12.2 meters.</i>
<b>Evans Bay Parade</b>	<i>No Stopping, At All Times</i>	<i>West side, commencing 872.1 metres south of its intersection with Rata Road (Grid Coordinates x=1750703.99m, y=5425789.89m), and extending in a southerly direction following the western kerb line for 14.7 meters.</i>
<b>Evans Bay Parade</b>	<i>No Stopping, At All Times</i>	<i>West side, commencing 893.1 metres south of its intersection with Rata Road (Grid Coordinates x=1750703.99m, y=5425789.89m), and extending in a southerly direction following the western kerb line for 34.6 meters.</i>
<b>Evans Bay Parade</b>	<i>No Stopping, At All Times</i>	<i>West side, commencing 939.8 metres south of its intersection with Rata Road (Grid Coordinates x=1750703.99m, y=5425789.89m), and extending in a southerly direction following the western kerb line for 18.1 meters.</i>
<b>Evans Bay Parade</b>	<i>No Stopping, At All Times</i>	<i>East side, commencing 886 metres south of its intersection with Rata Road (Grid Coordinates x=1750722.82m, y=5425794.99m), and extending in a southerly direction following the eastern kerb line for 58 meters.</i>
<b>Evans Bay Parade</b>	<i>No Stopping, At All Times</i>	<i>East side, commencing 830 metres south of its intersection with Rata Road (Grid Coordinates x=1750722.82m, y=5425794.99m), and extending in a southerly direction following the eastern kerb line for 40.8 meters.</i>
<b>Evans Bay Parade</b>	<i>No Stopping, At All Times</i>	<i>East side, commencing 430 metres south of its intersection with Rata Road (Grid Coordinates x=1750722.82m, y=5425794.99m), and extending in a southerly direction following the eastern kerb line for 287 meters.</i>

# We are proposing a change in your area

<b>Evans Bay Parade</b>	<i>No Stopping, At All Times</i>	<i>East side, commencing 315 metres south of its intersection with Rata Road (Grid Coordinates x=1750722.82m, y=5425794.99m), and extending in a southerly direction following the eastern kerb line for 102 meters.</i>
<b>Evans Bay Parade</b>	<i>No Stopping, At All Times</i>	<i>East side, commencing 122 metres south of its intersection with Rata Road (Grid Coordinates x=1750722.82m, y=5425794.99m), and extending in a southerly direction following the eastern kerb line for 156 meters.</i>
<b>Evans Bay Parade</b>	<i>No Stopping, At All Times</i>	<i>East side, commencing 8 metres south of its intersection with Rata Road (Grid Coordinates x=1750722.82m, y=5425794.99m), and extending in a southerly direction following the eastern kerb line for 105 meters.</i>
<b>Evans Bay Parade</b>	<i>No Stopping, At All Times</i>	<i>East side, commencing 142 metres north of its intersection with Rata Road (Grid Coordinates x=1750722.82m, y=5425794.99m), and extending in a northerly direction following the eastern kerb line for 71.4 meters.</i>
<b>Evans Bay Parade</b>	<i>No Stopping, At All Times</i>	<i>East side, commencing 245 metres north of its intersection with Rata Road (Grid Coordinates x=1750722.82m, y=5425794.99m), and extending in a northerly direction following the eastern kerb line for 4.2 meters.</i>
<b>Evans Bay Parade</b>	<i>No Stopping, At All Times</i>	<i>East side, commencing 255 metres north of its intersection with Rata Road (Grid Coordinates x=1750722.82m, y=5425794.99m), and extending in a northerly direction following the eastern kerb line for 6.3 meters.</i>
<b>Evans Bay Parade</b>	<i>No Stopping, At All Times</i>	<i>East side, commencing 318 metres north of its intersection with Rata Road (Grid Coordinates x=1750722.82m, y=5425794.99m), and extending in a northerly direction following the eastern kerb line for 42.4 meters.</i>
<b>Evans Bay Parade</b>	<i>No Stopping, At All Times</i>	<i>East side, commencing 449 metres north of its intersection with Rata Road (Grid Coordinates x=1750722.82m, y=5425794.99m), and extending in a northerly direction following the eastern kerb line for 53.4 meters</i>



# We are proposing a change in your area

<b>Evans Bay Parade</b>	<i>No Stopping, At All Times</i>	<i>East side, commencing 507 metres north of its intersection with Rata Road (Grid Coordinates x=1750722.82m, y=5425794.99m), and extending in a northerly direction following the eastern kerb line for 17.0 meters.</i>
<b>Evans Bay Parade</b>	<i>No Stopping, At All Times</i>	<i>East side, commencing 532 metres north of its intersection with Rata Road (Grid Coordinates x=1750722.82m, y=5425794.99m), and extending in a northerly direction following the eastern kerb line for 29.8 meters.</i>
<b>Evans Bay Parade</b>	<i>No Stopping, At All Times</i>	<i>East side, commencing 648 metres north of its intersection with Rata Road (Grid Coordinates x=1750722.82m, y=5425794.99m), and extending in a northerly direction following the eastern kerb line for 46.4 meters.</i>

Add to Schedule G (Give Way & Stop) of the Traffic Restrictions Schedule

<b>Column One</b>	<b>Column Two</b>	<b>Column Three</b>
<b>Evans Bay Parade</b>	<i>Give Way &amp; Stop, At All Times</i>	<i>Commencing 529 metres north of its intersection with Rata Road (Grid Coordinates x= 750703.99m, y=5425789.89m).</i>
<b>Evans Bay Parade</b>	<i>Give Way &amp; Stop, At All Times</i>	<i>Commencing 513 metres north of its intersection with Rata Road (Grid Coordinates x= 750703.99m, y=5425789.89m).</i>
<b>Evans Bay Parade</b>	<i>Give Way &amp; Stop, At All Times</i>	<i>Commencing 281 metres north of its intersection with Rata Road (Grid Coordinates x= 750703.99m, y=5425789.89m).</i>
<b>Evans Bay Parade</b>	<i>Give Way &amp; Stop, At All Times</i>	<i>Commencing 267 metres north of its intersection with Rata Road (Grid Coordinates x= 750703.99m, y=5425789.89m).</i>
<b>Evans Bay Parade</b>	<i>Give Way &amp; Stop, At All Times</i>	<i>Commencing 188 metres north of its intersection with Rata Road (Grid Coordinates x= 750703.99m, y=5425789.89m).</i>
<b>Evans Bay Parade</b>	<i>Give Way &amp; Stop, At All Times</i>	<i>Commencing 174 metres north of its intersection with Rata Road (Grid Coordinates x= 750703.99m, y=5425789.89m).</i>

# We are proposing a change in your area

<b>Evans Bay Parade</b>	<i>Give Way &amp; Stop, At All Times</i>	<i>Commencing 95 metres south of its intersection with Rata Road (Grid Coordinates x= 750703.99m, y=5425789.89m).</i>
<b>Evans Bay Parade</b>	<i>Give Way &amp; Stop, At All Times</i>	<i>Commencing 112 metres south of its intersection with Rata Road (Grid Coordinates x= 750703.99m, y=5425789.89m).</i>

Add to Schedule H (Pedestrian Crossings) of the Traffic Restrictions Schedule

<b>Column One</b>	<b>Column Two</b>	<b>Column Three</b>
<b>Evans Bay Parade</b>	<i>Pedestrian Crossings, At All Times</i>	<i>Commencing 521 metres north of its intersection with Rata Road (Grid Coordinates x= 750703.99m, y=5425789.89m).</i>
<b>Evans Bay Parade</b>	<i>Pedestrian Crossings, At All Times</i>	<i>Commencing 274 metres north of its intersection with Rata Road (Grid Coordinates x= 750703.99m, y=5425789.89m).</i>
<b>Evans Bay Parade</b>	<i>Pedestrian Crossings, At All Times</i>	<i>Commencing 181 metres north of its intersection with Rata Road (Grid Coordinates x= 750703.99m, y=5425789.89m).</i>
<b>Evans Bay Parade</b>	<i>Pedestrian Crossings, At All Times</i>	<i>Commencing 104 metres south of its intersection with Rata Road (Grid Coordinates x= 750703.99m, y=5425789.89m).</i>

Add to Schedule I (Cycle Lanes) of the Traffic Restrictions Schedule

<b>Column One</b>	<b>Column Two</b>	<b>Column Three</b>
<b>Evans Bay Parade</b>	<i>Cycle Lanes, At All Times</i>	<i>East side, commencing 10 metres east of its intersection with Wellington Road and extending in a northerly direction following the eastern side for 1702 metres.</i>

# We are proposing a change in your area

## Remove from Schedule A (Time Limited) of the Traffic Restrictions Schedule

Column One	Column Two	Column Three
<b>Evans Bay Parade</b>	<i>P60, At All Times</i>	<i>West side, commencing 238 metres north of its intersection with Rata Road and extending in a northerly direction following the western kerb line for 19 metres.</i>
<b>Evans Bay Parade</b>	<i>P10 Loading Zone, At All Times</i>	<i>West side, commencing 232.5 metres north of its intersection with Rata Road (Grid Coordinates x=1750712.59m, y=5425815.80m), and extending in a northerly direction following the western kerb line for 5.5 metres.</i>
<b>Evans Bay Parade</b>	<i>P120, Monday to Sunday, 8am - 6pm</i>	<i>East side, commencing 213 metres north of its intersection with Rata Road and extending in a northerly direction following the eastern kerb line for 30.4 metres.</i>
<b>Evans Bay Parade</b>	<i>P120, Monday to Sunday, 8am - 6pm</i>	<i>East side, commencing 412 metres north of its intersection with Rata Road and extending in a northerly direction following the eastern kerb line for 27.5 metres.</i>

## Remove from Schedule B (Class Restricted) of the Traffic Restrictions Schedule

Column One	Column Two	Column Three
<b>Evans Bay Parade</b>	<i>Bus Stop, At All Times</i>	<i>West side, commencing 326.5 metres north of its intersection with Rata Road (Grid Coordinates X=1750712.59m, Y=5425815.80m), and extending in a northerly direction following the western kerb line for 12 metres.</i>  <i>Stop # 7547</i>
<b>Evans Bay Parade</b>	<i>Bus Stop, At All Times</i>	<i>West side, commencing 176.5 metres west of its intersection with Belvedere Road and extending in a northerly direction following the western kerb line for 16 metres.</i>  <i>Stop # 7549</i>
<b>Evans Bay Parade</b>	<i>Bus Stop, At All Times</i>	<i>West side, commencing 571 metres west of its intersection with Wellington Road and extending in a northerly direction following the western kerb line for 12 metres to its intersection with Belvedere Road.</i>

# We are proposing a change in your area

		Stop # 7550 (being moved slightly)
<b>Evans Bay Parade</b>	<i>Bus Stop, At All Times</i>	West side, commencing 377.5 metres west of its intersection with Wellington Road and extending in a northerly direction following the western kerb line for 12 metres.  Stop # 7551
<b>Evans Bay Parade</b>	<i>Bus Stop, At All Times</i>	West side, commencing 154 metres west of its intersection with Wellington Road and extending in a northerly direction following the western kerb line for 12 metres.  Stop # 7552 (being moved slightly)
<b>Evans Bay Parade</b>	<i>Bus Stop, At All Times</i>	East side, commencing 123 metres east of its intersection with Wellington Road and extending in a northerly direction following the eastern kerb line for 12 metres.  Stop # 6552 (being moved slightly)
<b>Evans Bay Parade</b>	<i>Bus Stop, At All Times</i>	East side, commencing 389.5 metres east of its intersection with Wellington Road and extending in a northerly direction following the eastern kerb line for 12 metres.  Stop # 6551
<b>Evans Bay Parade</b>	<i>Bus Stop, At All Times</i>	East side, commencing 531.5 metres east of its intersection with Wellington Road and extending in a northerly direction following the eastern kerb line for 12 metres.  Stop # 6550 (being moved slightly)
<b>Evans Bay Parade</b>	<i>Bus Stop, At All Times</i>	East side, commencing 767.6 metres east of its intersection with Wellington Road and extending in a northerly direction following the eastern kerb line for 12 metres.  Stop # 6549

# We are proposing a change in your area

<b>Evans Bay Parade</b>	<i>Bus Stop, At All Times</i>	<i>East side, commencing 1285.5 metres east of its intersection with Wellington Road and extending in a northerly direction following the eastern kerb line for 12 metres.</i>  <i>Stop # 6547</i>
<b>Evans Bay Parade</b>	<i>Bus Stop, At All Times</i>	<i>East side, commencing 1508 metres east of its intersection with Wellington Road and extending in a northerly direction following the eastern kerb line for 14 metres.</i>  <i>Stop #6546</i>

**Prepared By:**

Sri Chakkapalli

**Project Manager, Calibre**

**On behalf of:**

Hilary Fowler

**Senior Project Manager, Transport Planning, Wellington City Council  
Team Leader Transport**

**Approved By:**

Zackary Moodie

**Engineering, Wellington City Council**

**Date:**

9/09/2021