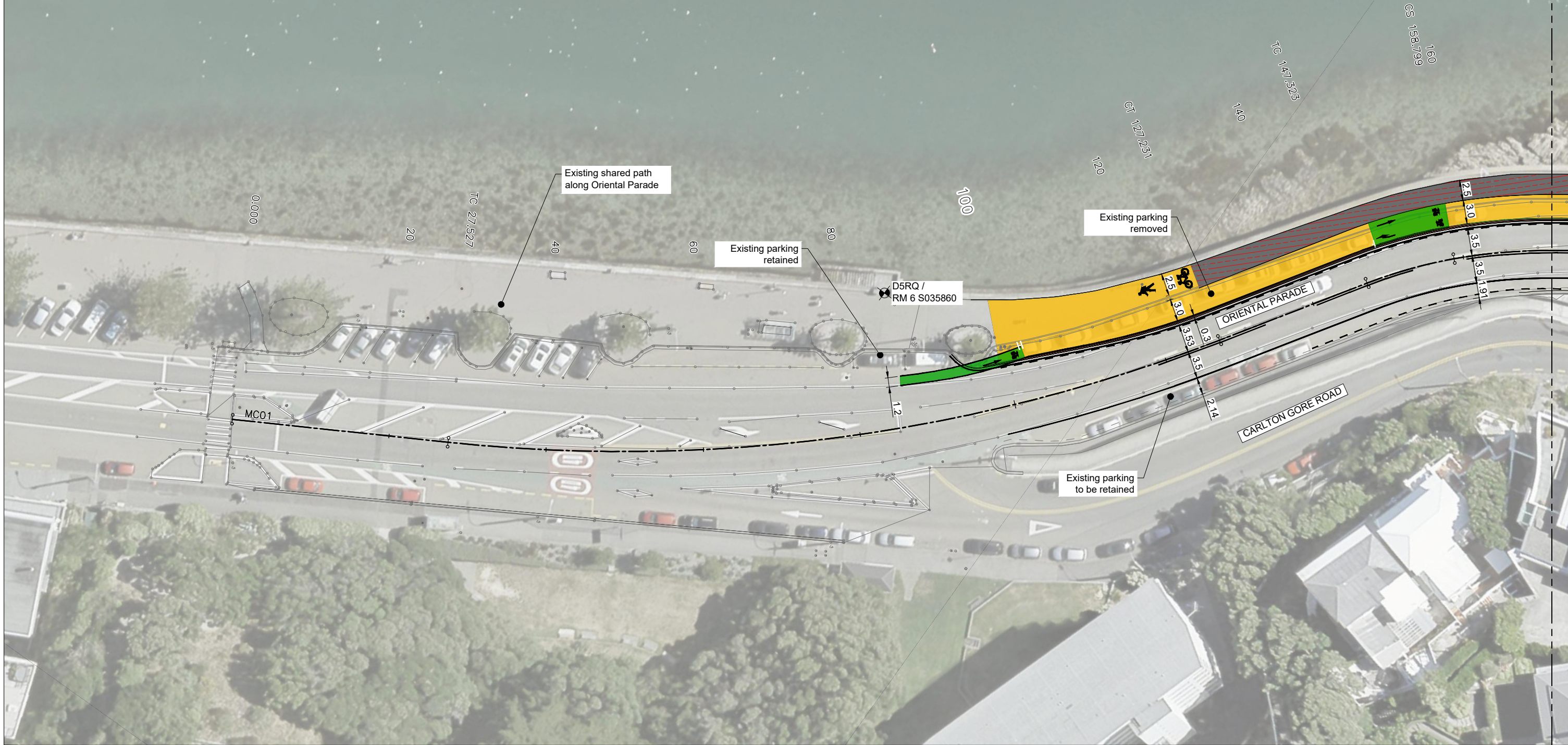




KEY:

- Property Boundary
- Existing Edge of Seal
- Exposed Aggregate Concrete Footpath
- AC Cyclepath / Footpath
- Safety Buffer Zone
- Parking Area
- New Transition Wall
- Survey Mark

- Notes:**
1. All Co-ordinates are in terms of Wellington Circuit 2000 Survey Origin Geodetic Mark D5RN
 2. Vertical datum is in terms of Wellington 1953 Level Origin Geodetic Mark D5RN 1.987
 3. Refer to drawings 60582273-SHT-CI-0030-0033 for typical cross section details.
 4. Refer to drawings 60582273-SHT-CI-0055-0059 for road pavement and kerbing details.
 5. Refer to drawings 60582273-SHT-CI-0065-0070 for signs and markings details
 6. General dimensions:
 - 6.1. Buffer zone is measured between face of the kerb and edge of the cyclepath.
 - 6.2. Traffic lanes are measured between the edge of the seal and the road centreline.

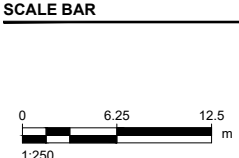
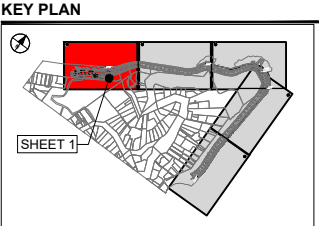


Last saved by: TAMAYOC(2019-04-12) Last Plotted: 2019-04-12
 Filename: \\NZVLG1\FP001\PROJECTS\60582273\CAD\20-SHEETS\60582273-SHT-CI-0005.DWG

This drawing is confidential and shall only be used for the purpose of this project. The signing of this title block confirms the design and drafting of this project have been prepared and checked in accordance with the AECOM quality assurance system to ISO 9001-2000.



PROJECT
 Evans Bay Parade
 Cycleway Part 1



FOR CONSTRUCTION

PROJECT MANAGEMENT INITIALS

CDT	MW	DG
DESIGNER	CHECKED	APPROVED

ISSUE/REVISION

I/R	DATE	DESCRIPTION
1	12.04.2019	FOR CONSTRUCTION

PROJECT NUMBER
60582273

SHEET TITLE
GENERAL ARRANGEMENT
SHEET 1 OF 5

SHEET NUMBER
SHT-CI-0005