



NOTE:
1. ALL EXISTING ROAD MARKINGS TO BE RETAINED MUST BE REMARKED IF THEY ARE FADED

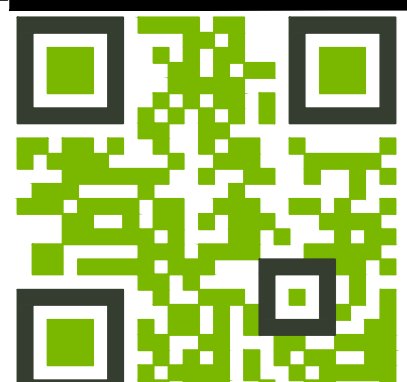
LEGEND	
	NEW ROAD MARKINGS
	EXISTING ROAD MARKINGS TO BE RETAINED
	ROADMARKINGS TO BE REMOVED
	CYCLEWAY SEPARATOR
	NEW KERBS
	REMOVED KERBS
	NEW SIGNAGE
	SIGNAGE TO BE REMOVED

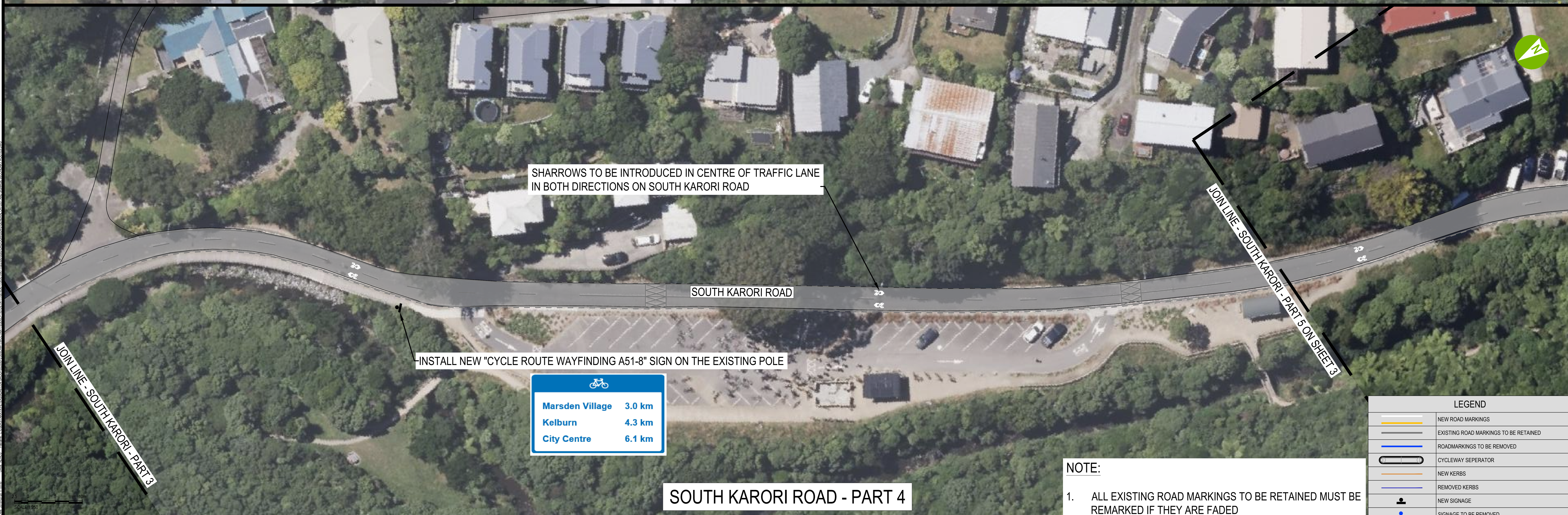
aurecon
www.aurecongroup.com

CLIENT

Absolutely Positively
Wellington City Council
Me Heke Ki Pōneke

REV	DATE	REVISION DETAILS	APPROVED	SCALE	SIZE	FOR CONSTRUCTION	PROJECT
A	14/09/23	FOR CONSTRUCTION	G MURISON	1:250	A0	FOR CONSTRUCTION	KARORI TO BOTANIC GARDEN KI PĀEKAKA CONNECTIONS WCC TRANSITIONAL CYCLEWAYS
						APPROVED	GENERAL LAYOUT AND SIGNAGE SECONDARY ROUTE SOUTH KARORI ROAD SHEET 1 (OF 3)
							DRAWING No. 522550 - AREA 0000 - TTC DRG - DGN - NUMBER 0004 - REV 0





	Distance
Marsden Village	3.0 km
Kelburn	4.3 km
City Centre	6.1 km

LEGEND	
	NEW ROAD MARKINGS
	EXISTING ROAD MARKINGS TO BE RETAINED
	ROADMARKINGS TO BE REMOVED
	CYCLEWAY SEPARATOR
	NEW KERBS
	REMOVED KERBS
	NEW SIGNAGE
	SIGNAGE TO BE REMOVED

NOTE:
 1. ALL EXISTING ROAD MARKINGS TO BE RETAINED MUST BE REMARKED IF THEY ARE FADED



aurecon
 www.aurecongroup.com

Absolutely Positively
Wellington City Council
 Me Heke Ki Pōneke

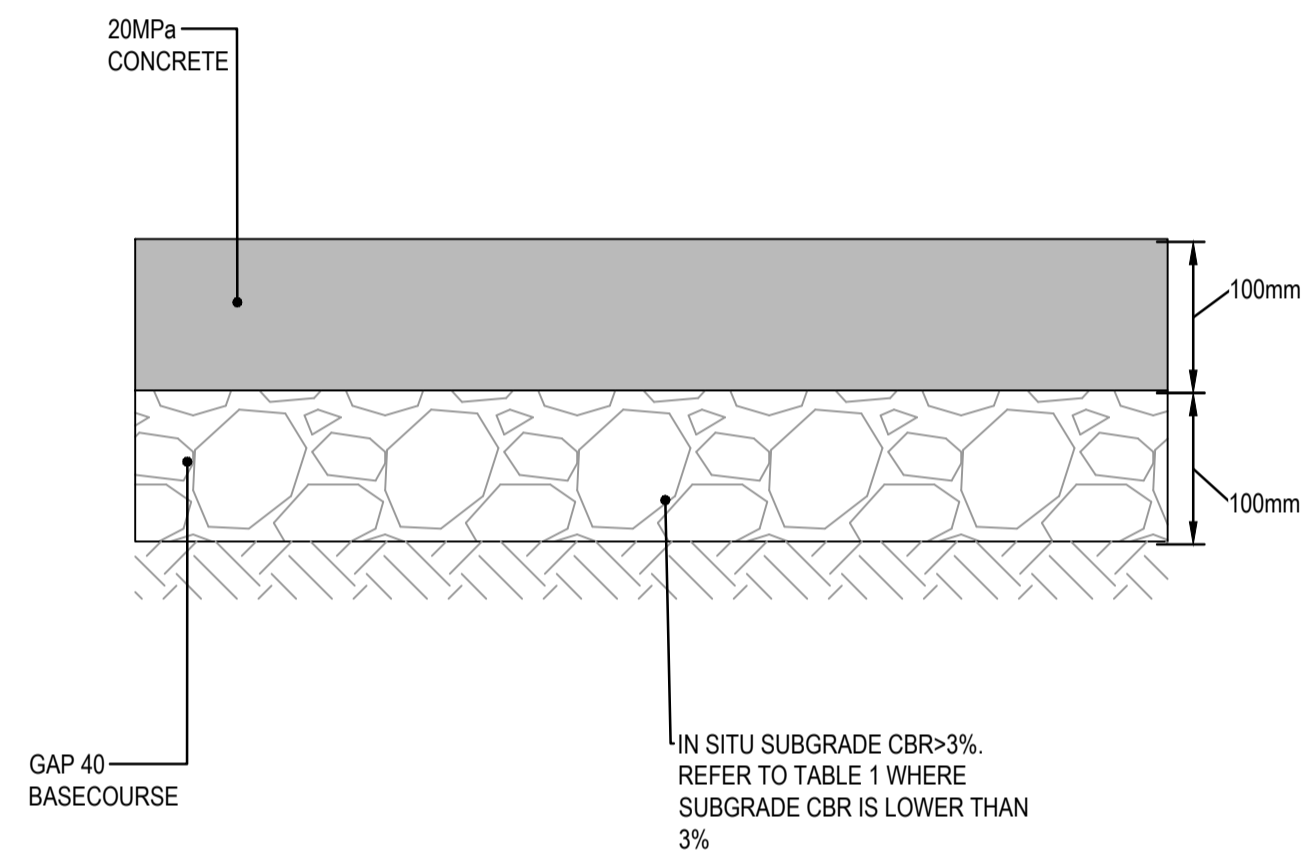
REV	DATE	REVISION DETAILS	APPROVED	SCALE	SIZE
A	14/09/23	FOR CONSTRUCTION	G MURISON	1:250	A0

FOR CONSTRUCTION	APPROVED	DATE

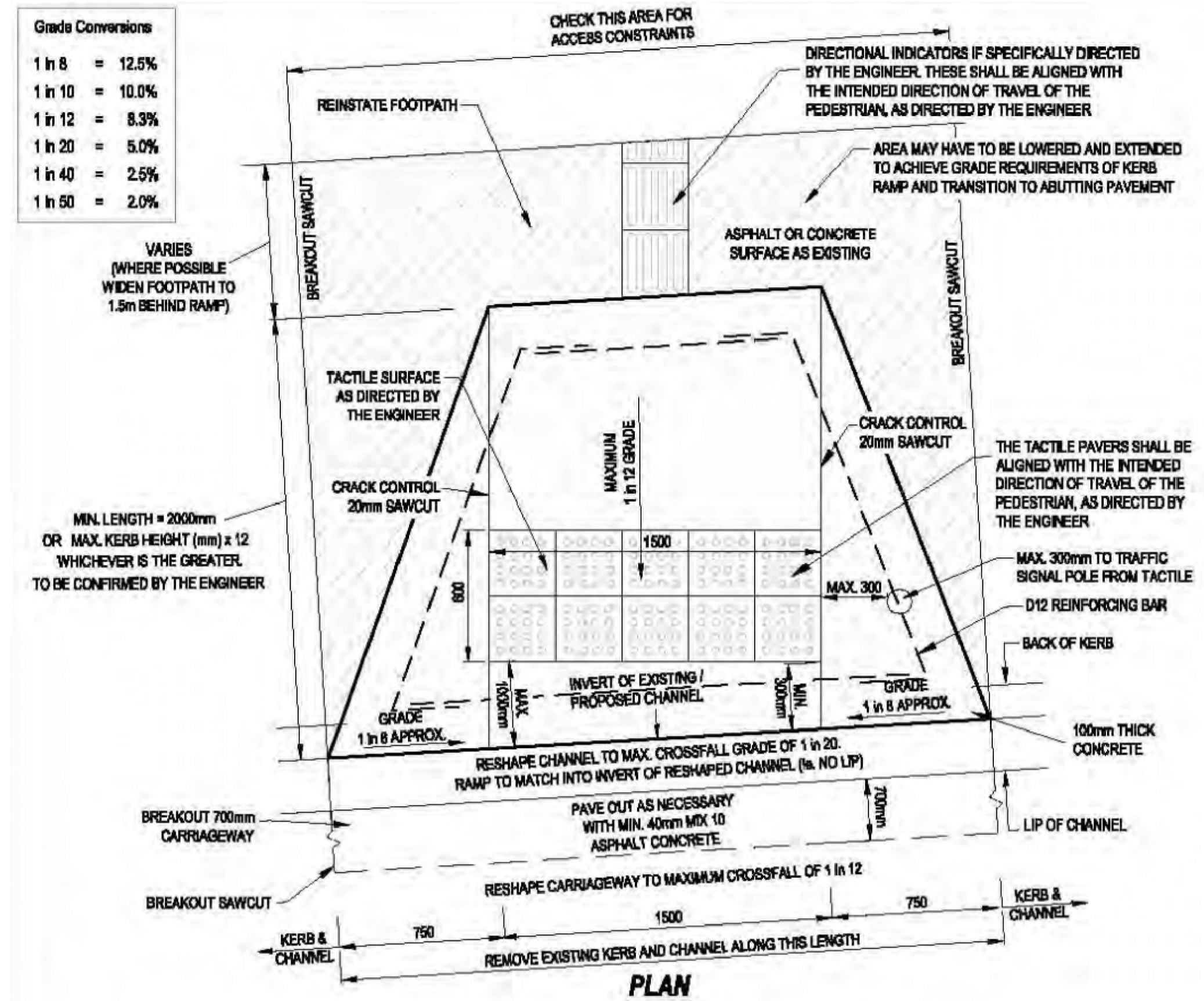
PROJECT	TITLE	PROJECT No.	AREA	TTC	DGN	NUMBER	REV
KARORI TO BOTANIC GARDEN KI PĀEKĀKA CONNECTIONS WCC TRANSITIONAL CYCLEWAYS	GENERAL LAYOUT AND SIGNAGE SECONDARY ROUTE SOUTH KARORI ROAD SHEET 2 (OF 3)	522550	0000	DRG	DGN	0004	0

NOTE:

- TACTILE GROUND INDICATORS MUST BE INSTALLED IN ACCORDANCE WITH:
 - NZTA RTS 14: GUIDELINE FOR FACILITIES FOR BLIND AND VISION-IMPAIRED PEDESTRIANS
 - AS/NZS 1428.4:2009 DESIGN FOR ACCESS AND MOBILITY
 - WAKA KOTAHI 20-20 TACTILE INDICATOR INSTALLATION NOTE
- REFER TO WCC CODE OF PRACTICE FOR LAND DEVELOPMENT FOR TACTILE BEDDING PROPERTIES.
- PRAM CROSSING RAMP AND FLARING SHOULD BE CONSTRUCTED IN CONTRASTING COLOUR / OR TEXTURE TO THE ADJACENT FOOTPATH.

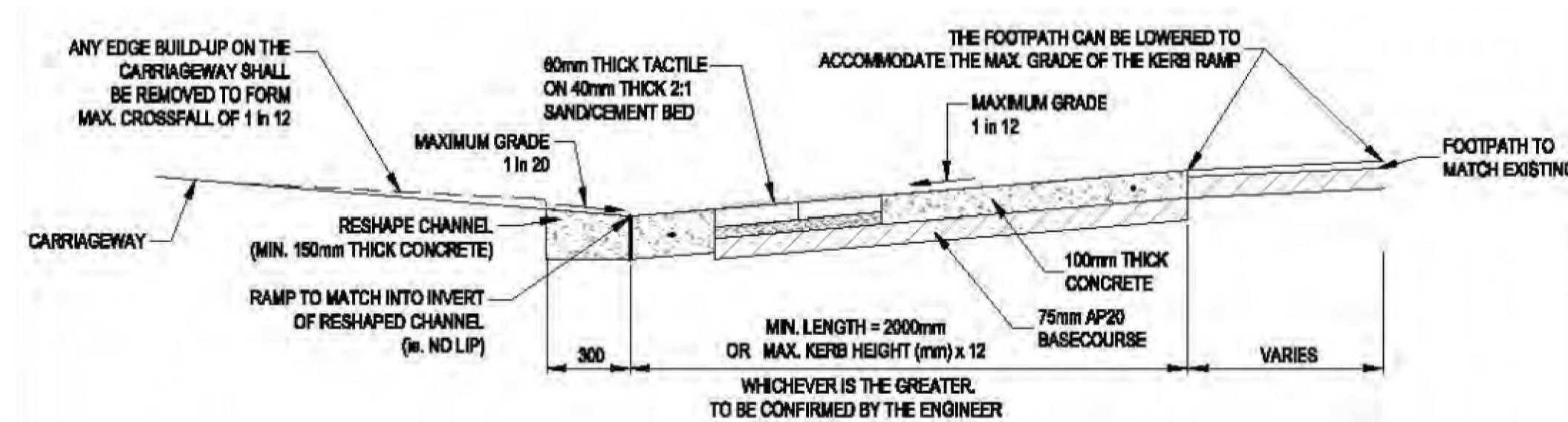


E CONCRETE FOOTPATH PAVEMENT
SCALE 1:5



REFER TO PLAN NO. R-24-727 IN WCC CODE OF PRACTICE FOR LAND DEVELOPMENT FOR DETAILS

G PEDESTRIAN RAMP WITH TACTILE PAVERS - PLAN
SCALE 1:20



REFER TO PLAN NO. R-24-727 IN WCC CODE OF PRACTICE FOR LAND DEVELOPMENT FOR DETAILS

G-1 PEDESTRIAN RAMP WITH TACTILE PAVERS - SECTION
SCALE 1:20

File name: C:\USERS\TARYN.PETERS\AURECON\GROUP\22595 - LOWM CITY STREETS TRANSITION - 3 DEVELOP\305 CHANGE\WCC TRANSITIONAL CYCLEWAYS\SD DELIVERABLES\7 DETAIL DESIGN\004 DESIGN - SECONDARY ROUTES\SOUTH KARORI ROAD\22595-0000-0004-1.TYPICAL DETAILS.DWG
 Plot Date: 2018/02/28 11:02:00
 Office: Pth



CLIENT

Absolutely Positively Wellington City Council
Me Heke Ki Pōneke

REV	DATE	REVISION DETAILS	APPROVED
0	14/09/23	FOR CONSTRUCTION	G MURISON

SCALE	SIZE
AS SHOWN	A1
DRAWN	
T PETERS	
DESIGNED	
T PETERS	
REVIEWED	
M COCKING	

FOR CONSTRUCTION
APPROVED
DATE

PROJECT	KARORI TO BOTANIC GARDEN KI PAKAKA CONNECTIONS WCC TRANSITIONAL CYCLEWAYS
TITLE	KERB RAMP AND TACTILES TYPICAL DETAILS
DRAWING No.	522550 - 0000 - DRG - DGN - 0505 - 0