

LEGEND	
	NEW NO STOPPING LINES
	NEW ROAD MARKINGS
	EXISTING ROAD MARKINGS TO BE RETAINED
	CYCLE LANE SEPARATOR
	NEW KERBS
	REMOVED KERBS
	INTERLOCKING SPEED HUMP

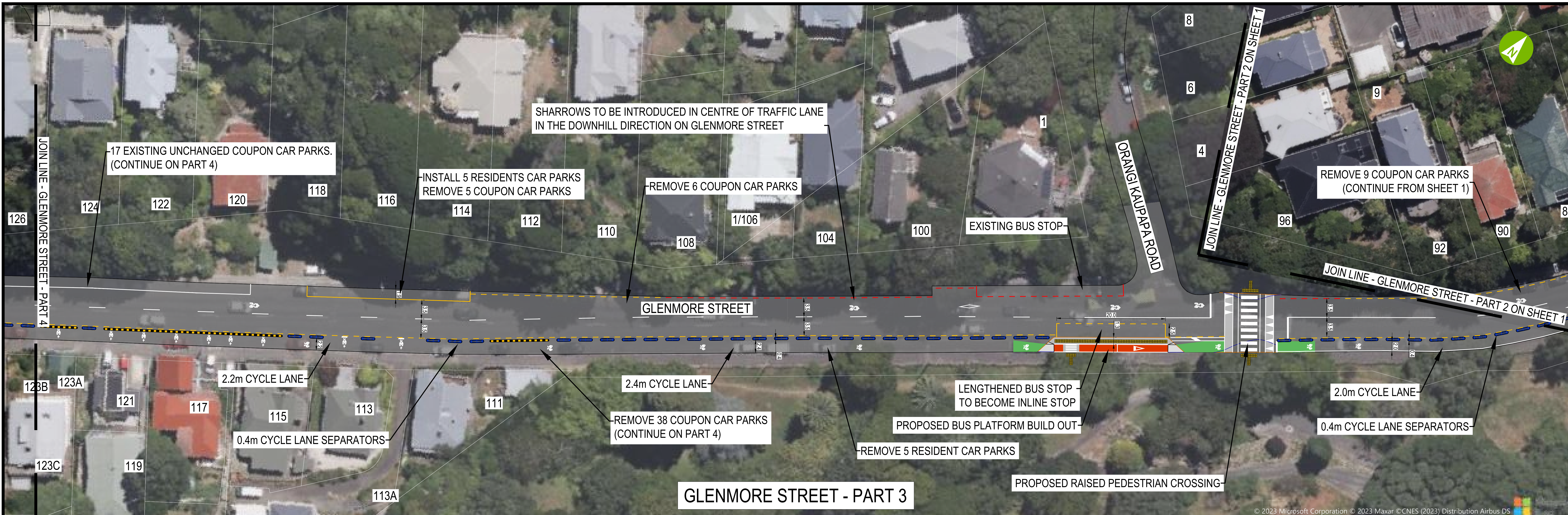


Absolutely Positively
Wellington City Council
Me Heke Ki Pōneke

REV	DATE	REVISION DETAILS	APPROVED
A	12/25/23	FOR DISCUSSION / REVIEW - 30% DESIGN	G. MURISON
B	07/07/23	FOR DISCUSSION / REVIEW - 90% DESIGN	G. MURISON
C	11/09/23	FOR DISCUSSION / REVIEW - 90% DESIGN	G. MURISON
D	18/08/23	FOR DISCUSSION / REVIEW - 90% DESIGN	G. MURISON
E	06/09/23	FOR DISCUSSION / REVIEW - 90% DESIGN	G. MURISON

SCALE	SIZE	WORK IN PROGRESS
1:250	A0	APPROVED
		DATE

PROJECT	TITLE
KARORI TO BOTANIC GARDEN KI PĀEKAKA CONNECTIONS WCC TRANSITIONAL CYCLEWAYS	GENERAL LAYOUT PRIMARY ROUTE - 90% DESIGN GLENMORE STREET SHEET 1 (OF 9)
DRAWING No.	PROJECT No.
522550	522550
AREA	TTC
0000	DRG
DATE	NUMBER
0001	0001
REV	REV
E	E



GLENMORE STREET - PART 3



GLENMORE STREET - PART 4

LEGEND	
	NEW NO STOPPING LINES
	NEW ROAD MARKINGS
	EXISTING ROAD MARKINGS TO BE RETAINED
	CYCLE LANE SEPARATOR
	NEW KERBS
	REMOVED KERBS
	INTERLOCKING SPEED HUMP

aurecon
www.aurecongroup.com

CLIENT
**Absolutely Positively
Wellington City Council**
Me Heke Ki Pōneke

REV	DATE	REVISION DETAILS	APPROVED
A	12/02/23	FOR DISCUSSION / REVIEW - 30% DESIGN	G. MURISON
B	07/07/23	FOR DISCUSSION / REVIEW - 90% DESIGN	G. MURISON
C	11/09/23	FOR DISCUSSION / REVIEW - 90% DESIGN	G. MURISON
D	18/08/23	FOR DISCUSSION / REVIEW - 90% DESIGN	G. MURISON
E	06/09/23	FOR DISCUSSION / REVIEW - 90% DESIGN	G. MURISON

SCALE	SIZE
1:250	A0

WORK IN PROGRESS	PROJECT
APPROVED	KARORI TO BOTANIC GARDEN KI PĀEKAKA CONNECTIONS WCC TRANSITIONAL CYCLEWAYS
DATE	TITLE
	GENERAL LAYOUT PRIMARY ROUTE - 90% DESIGN GLENMORE STREET SHEET 2 (OF 9)

DRAWING No.	PROJECT No.	AREA	TRC	DGN	NUMBER	REV
522550	0000	DRG	DGN	0001	E	



GLENMORE STREET - PART 5

LEGEND	
	NEW NO STOPPING LINES
	NEW ROAD MARKINGS
	EXISTING ROAD MARKINGS TO BE RETAINED
	CYCLE LANE SEPARATOR
	NEW KERBS
	REMOVED KERBS
	INTERLOCKING SPEED HUMP



CLIENT
Absolutely Positively Wellington City Council
 Me Heke Ki Pōneke

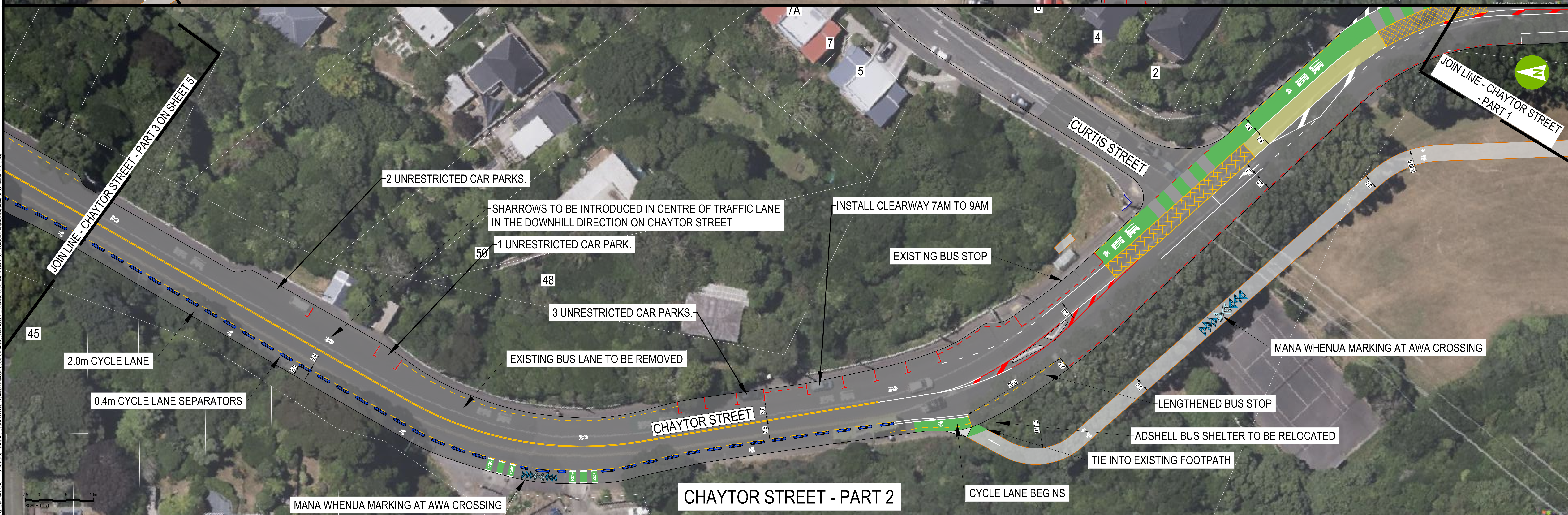
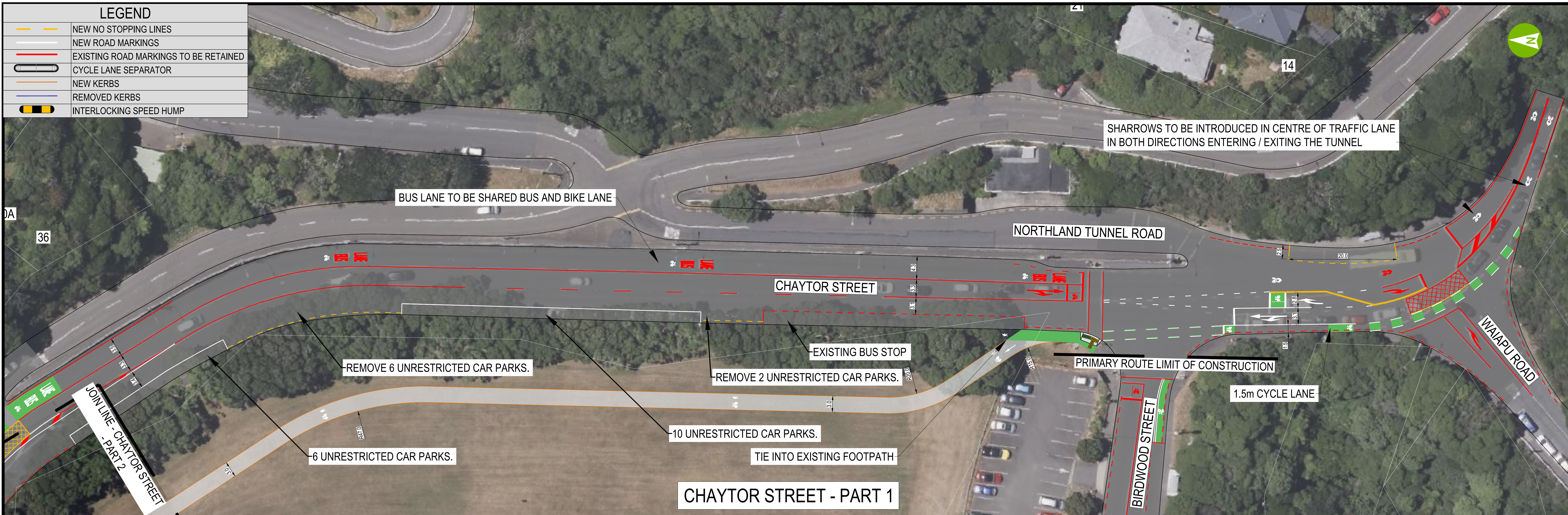
REV	DATE	REVISION DETAILS	APPROVED
A	12/25/23	FOR DISCUSSION / REVIEW - 30% DESIGN	G. MURISON
B	07/07/23	FOR DISCUSSION / REVIEW - 90% DESIGN	G. MURISON
C	11/09/23	FOR DISCUSSION / REVIEW - 90% DESIGN	G. MURISON
D	18/08/23	FOR DISCUSSION / REVIEW - 90% DESIGN	T. PETERS
E	06/09/23	FOR DISCUSSION / REVIEW - 90% DESIGN	G. MURISON

SCALE	SIZE
1:250	A0
DRAWN	DESIGNED
T. PETERS	T. PETERS
REVIEWED	DATE
M. COCKING	

WORK IN PROGRESS	APPROVED

PROJECT	TITLE
KARORI TO BOTANIC GARDEN KI PĀEKĀKA CONNECTIONS WCC TRANSITIONAL CYCLEWAYS	GENERAL LAYOUT PRIMARY ROUTE - 90% DESIGN GLENMORE STREET SHEET 3 (OF 9)
DRAWING No. 522550	PROJECT No. 0000
AREA 0000	DATE DRG
DATE DGN	NUMBER 0001
REV E	

LEGEND	
	NEW NO STOPPING LINES
	NEW ROAD MARKINGS
	EXISTING ROAD MARKINGS TO BE RETAINED
	CYCLE LANE SEPARATOR
	NEW KERBS
	REMOVED KERBS
	INTERLOCKING SPEED HUMP



CLIENT

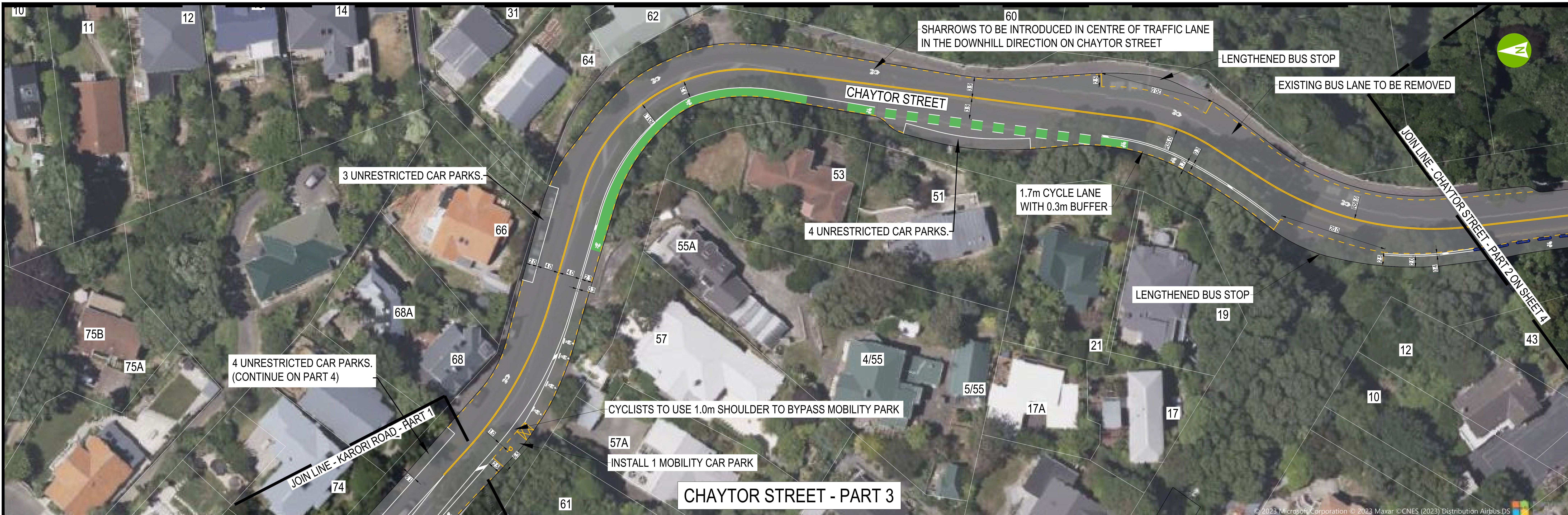
Aurecon
www.aurecongroup.com

Absolutely Positively Wellington City Council
Me Heke Ki Pōneke

REV	DATE	REVISION DETAILS	APPROVED
A	12/05/23	FOR DISCUSSION / REVIEW - 30% DESIGN	G. MURISON
B	07/07/23	FOR DISCUSSION / REVIEW - 90% DESIGN	G. MURISON
C	11/09/23	FOR DISCUSSION / REVIEW - 90% DESIGN	G. MURISON
D	18/08/23	FOR DISCUSSION / REVIEW - 90% DESIGN	T. PETERS
E	06/09/23	FOR DISCUSSION / REVIEW - 90% DESIGN	G. MURISON

SCALE	SIZE	WORK IN PROGRESS
1:250	A0	APPROVED
DRAWN	T. PETERS	DATE
DESIGNED	T. PETERS	
REVIEWED	M. COCKING	

PROJECT	TITLE	PROJECT No.	AREA	ITC	DWG	NUMBER	REV
KARORI TO BOTANIC GARDEN KI PĀEKAKA CONNECTIONS WCC TRANSITIONAL CYCLEWAYS	GENERAL LAYOUT PRIMARY ROUTE - 90% DESIGN CHAYTOR STREET SHEET 4 (OF 9)	522550	0000	DRG	DGN	0001	E



LEGEND

	NEW NO STOPPING LINES
	NEW ROAD MARKINGS
	EXISTING ROAD MARKINGS TO BE RETAINED
	CYCLE LANE SEPARATOR
	NEW KERBS
	REMOVED KERBS
	INTERLOCKING SPEED HUMP

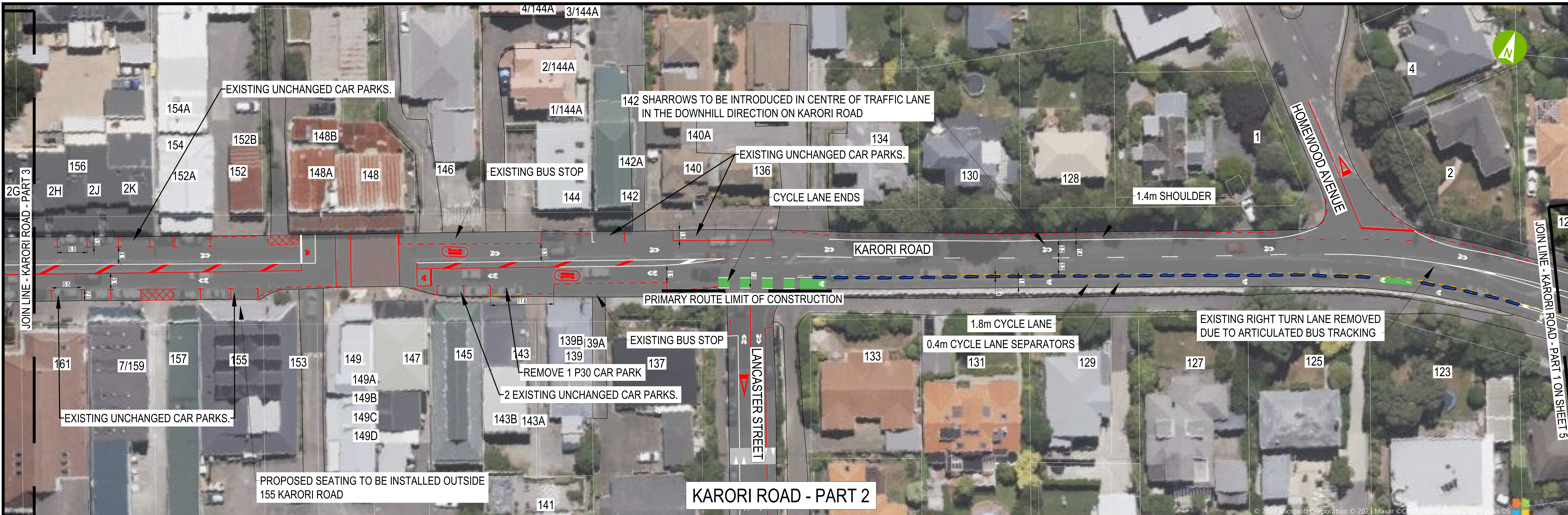


CLIENT
Absolutely Positively Wellington City Council
 Me Heke Ki Pōneke

REV	DATE	REVISION DETAILS	APPROVED
A	12/05/23	FOR DISCUSSION / REVIEW - 30% DESIGN	G MURISON
B	07/07/23	FOR DISCUSSION / REVIEW - 50% DESIGN	G MURISON
C	11/09/23	FOR DISCUSSION / REVIEW - 90% DESIGN	G MURISON
D	18/08/23	FOR DISCUSSION / REVIEW - 90% DESIGN	T PETERS
E	06/09/23	FOR DISCUSSION / REVIEW - 90% DESIGN	G MURISON

SCALE	1:250
SIZE	A0
WORK IN PROGRESS	APPROVED
DATE	

PROJECT	KARORI TO BOTANIC GARDEN KI PAKAKA CONNECTIONS WCC TRANSITIONAL CYCLEWAYS										
TITLE	GENERAL LAYOUT PRIMARY ROUTE - 90% DESIGN CHAYTOR STREET & KARORI ROAD SHEET 5 (OF 9)										
DRAWING No.	522550	AREA	0000	TRC	DRG	DGN		NUMBER	0001	REV	E



LEGEND	
	NEW NO STOPPING LINES
	NEW ROAD MARKINGS
	EXISTING ROAD MARKINGS TO BE RETAINED
	CYCLE LANE SEPARATOR
	NEW KERBS
	REMOVED KERBS
	INTERLOCKING SPEED HUMP

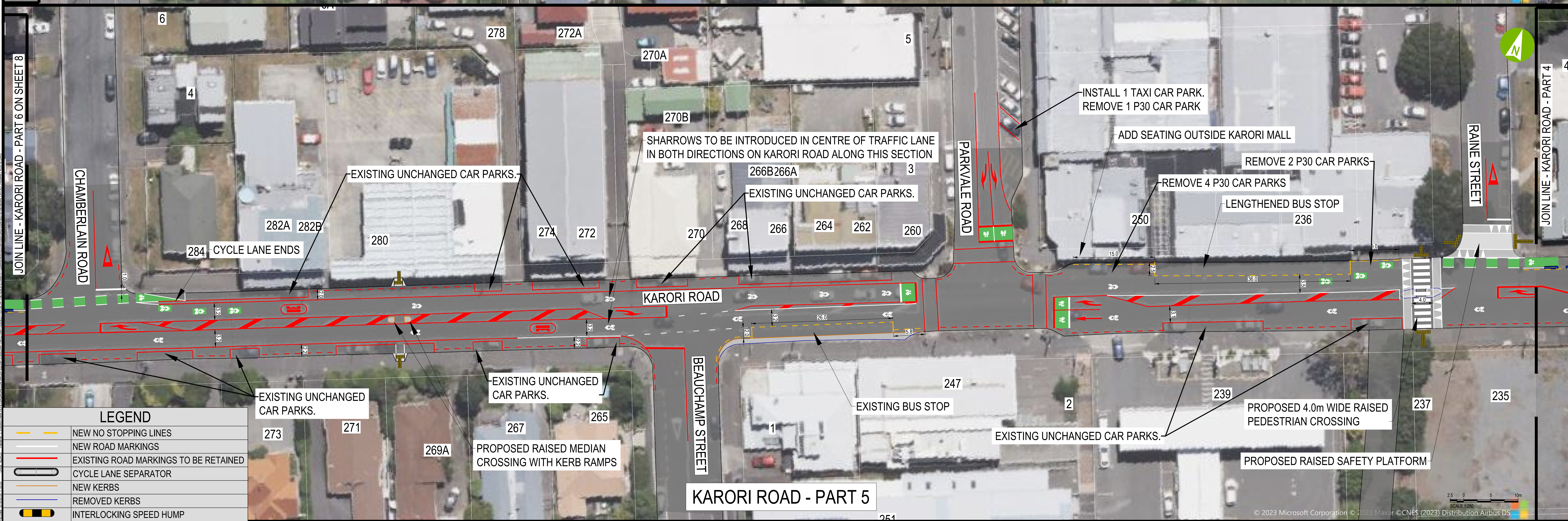


Absolutely Positively Wellington City Council
Me Heke Ki Pōneke

REV	DATE	REVISION DETAILS	APPROVED
A	12/03/23	FOR DISCUSSION / REVIEW - 30% DESIGN	G. MURISON
B	07/07/23	FOR DISCUSSION / REVIEW - 50% DESIGN	G. MURISON
C	11/09/23	FOR DISCUSSION / REVIEW - 90% DESIGN	G. MURISON
D	18/08/23	FOR DISCUSSION / REVIEW - 90% DESIGN	T. PETERS
E	06/09/23	FOR DISCUSSION / REVIEW - 90% DESIGN	G. MURISON

SCALE	SIZE	WORK IN PROGRESS	APPROVED
1:250	A0		
DRAWN	T. PETERS		
DESIGNED	T. PETERS		
REVIEWED	M. COCKING		

PROJECT	TITLE	PROJECT No.	AREA	DATE	NUMBER	REV
KARORI TO BOTANIC GARDEN KI PAKAKA CONNECTIONS WCC TRANSITIONAL CYCLEWAYS	GENERAL LAYOUT PRIMARY ROUTE - 90% DESIGN KARORI ROAD SHEET 6 (OF 9)	522550	0000	DRG	DGN	0001



LEGEND

[Yellow dashed line]	NEW NO STOPPING LINES
[Red dashed line]	NEW ROAD MARKINGS
[Red solid line]	EXISTING ROAD MARKINGS TO BE RETAINED
[Green dashed line]	CYCLE LANE SEPARATOR
[Blue dashed line]	NEW KERBS
[Blue solid line]	REMOVED KERBS
[Black dashed line]	INTERLOCKING SPEED HUMP

aurecon
www.aurecongroup.com

CLIENT
Absolutely Positively Wellington City Council
Me Heke Ki Pōneke

REV	DATE	REVISION DETAILS	APPROVED	SCALE	SIZE	WORK IN	PROJECT
A	12/05/23	FOR DISCUSSION / REVIEW - 30% DESIGN	G MURISON	1:250	A0	PROGRESS	KARORI TO BOTANIC GARDEN KI PAEKAKA CONNECTIONS WCC TRANSITIONAL CYCLEWAYS
B	07/07/23	FOR DISCUSSION / REVIEW - 50% DESIGN	G MURISON				
C	11/09/23	FOR DISCUSSION / REVIEW - 90% DESIGN	G MURISON				
D	18/08/23	FOR DISCUSSION / REVIEW - 90% DESIGN	G MURISON				
E	06/09/23	FOR DISCUSSION / REVIEW - 90% DESIGN	G MURISON				

PROJECT	TITLE	PROJECT No.	AREA	TRC	DCS	NUMBER	REV
KARORI TO BOTANIC GARDEN KI PAEKAKA CONNECTIONS WCC TRANSITIONAL CYCLEWAYS	GENERAL LAYOUT PRIMARY ROUTE - 90% DESIGN KARORI ROAD SHEET 7 (OF 9)	522550	0000	DRG	DGN	0001	E



LEGEND	
	NEW ROAD MARKINGS
	EXISTING ROAD MARKINGS TO BE RETAINED
	CYCLE LANE SEPARATOR
	NEW KERBS
	REMOVED KERBS
	INTERLOCKING SPEED HUMP

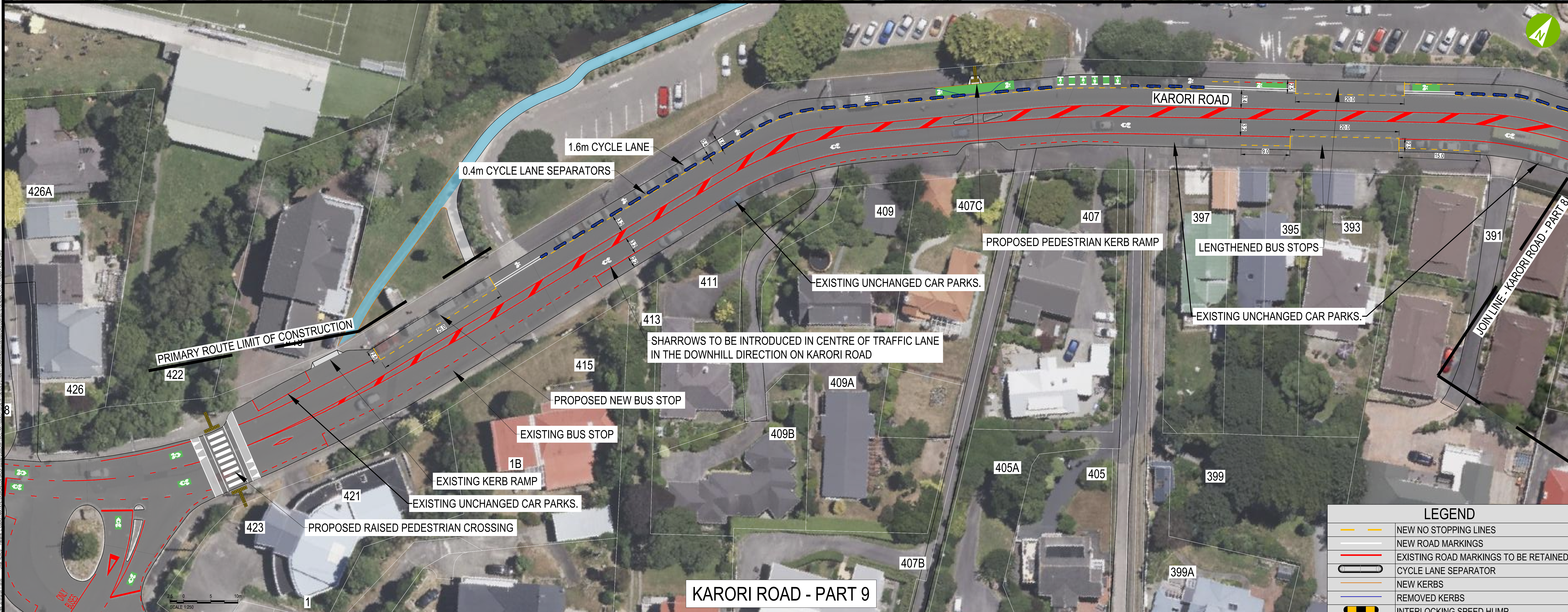
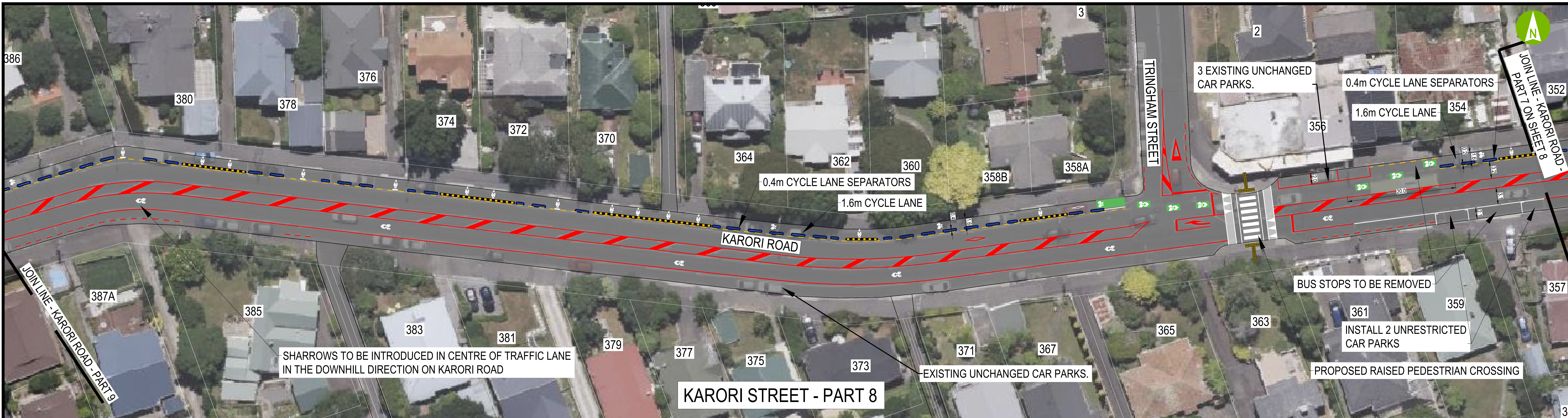
aurecon
www.aurecongroup.com

CLIENT
Absolutely Positively Wellington City Council
Me Heke Ki Pōneke

REV	DATE	REVISION DETAILS	APPROVED
A	12/05/23	FOR DISCUSSION / REVIEW - 30% DESIGN	G. MURISON
B	07/07/23	FOR DISCUSSION / REVIEW - 50% DESIGN	G. MURISON
C	11/08/23	FOR DISCUSSION / REVIEW - 90% DESIGN	G. MURISON
D	18/08/23	FOR DISCUSSION / REVIEW - 90% DESIGN	G. MURISON
E	06/09/23	FOR DISCUSSION / REVIEW - 90% DESIGN	G. MURISON

SCALE	SIZE	WORK IN PROGRESS
1:250	A0	PROGRESS
DRAWN	DESIGNED	APPROVED
T. PETERS	T. PETERS	
REVIEWED	DATE	
M. COCKING		

PROJECT	TITLE
KARORI TO BOTANIC GARDEN KI PĀEKAKA CONNECTIONS WCC TRANSITIONAL CYCLEWAYS	GENERAL LAYOUT PRIMARY ROUTE - 90% DESIGN KARORI ROAD SHEET 8 (OF 9)
DRAWING No.	PROJECT No.
522550	522550
AREA	TIC
0000	DRG
DSC	DGN
NUMBER	REV
0001	E



LEGEND	
	NEW NO STOPPING LINES
	NEW ROAD MARKINGS
	EXISTING ROAD MARKINGS TO BE RETAINED
	CYCLE LANE SEPARATOR
	NEW KERBS
	REMOVED KERBS
	INTERLOCKING SPEED HUMP



aurecon
www.aurecongroup.com

Absolutely Positively Wellington City Council
Me Heke Ki Pōneke

REV	DATE	REVISION DETAILS	APPROVED	SCALE	SIZE
A	12/05/23	FOR DISCUSSION / REVIEW - 30% DESIGN	G MURISON	1:250	A0
B	07/07/23	FOR DISCUSSION / REVIEW - 90% DESIGN	G MURISON		
C	11/08/23	FOR DISCUSSION / REVIEW - 90% DESIGN	G MURISON		
D	18/08/23	FOR DISCUSSION / REVIEW - 90% DESIGN	G MURISON		
E	06/09/23	FOR DISCUSSION / REVIEW - 90% DESIGN	G MURISON		

WORK IN PROGRESS	APPROVED	DATE

PROJECT	TITLE	PROJECT No.	AREA	ITC	DWG	NUMBER	REV
KARORI TO BOTANIC GARDEN KI PAEKAKA CONNECTIONS WCC TRANSITIONAL CYCLEWAYS	GENERAL LAYOUT PRIMARY ROUTE - 90% DESIGN KARORI ROAD SHEET 9 (OF 9)	522550	0000	DRG	DGN	0001	E