

LITTLE KARAKA BAY



- NOTES:**
- ALL THE COORDINATES ARE IN TERMS OF NZGD2000 WELLINGTON CIRCUIT 2000. THE ORIGIN OF THE COORDINATES IS GEODECTIC MARK ORM 10 SO 35860 (DSRK).
  - ALL ELEVATIONS ARE IN TERMS OF WELLINGTON VERTICAL DATUM 1953. THE ORIGIN OF THE COORDINATES IS GEODECTIC MARK ORM 10 SO 35860 (DSRK).
  - REFER TO DWG NO. IZ115701-4000-CR-DRG-1101 TO 1103 FOR TYPICAL SECTIONS.
  - REFER TO DWG NO. IZ115701-4000-CR-DRG-1201 TO 1214 FOR ANNOTATED CROSS-SECTIONS.
  - REFER TO DWG NO. IZ115701-4000-CR-DRG-1301 TO 1305 FOR STREET LIGHTING LAYOUTS.
  - REFER TO DWG NO. IZ115701-4000-CR-DRG-1401 TO 1405 FOR DRAINAGE LAYOUTS.
  - REFER TO DWG NO. IZ115701-4000-CR-DRG-1501 TO 1505 FOR PAVEMENT & KERBING LAYOUTS.
  - REFER TO DWG NO. IZ115701-4000-CR-DRG-1601 TO 1605 FOR TRAFFIC SIGNS & PAVEMENT MARKING LAYOUTS.
  - REFER TO DWG NO. IZ115701-4000-CR-DRG-1701 TO 1705 FOR EXISTING UTILITY LAYOUTS.
  - DIMENSIONS SHOWN ARE AS FOLLOWS:
    - BUFFER WIDTH IS MEASURED FROM THE FACE OF THE KERB TO THE EDGE OF THE TWO-WAY CYCLEWAY
    - TRAFFIC LANE IS MEASURED FROM THE ROAD CENTRELINE TO THE FACE OF THE KERB OR EDGELINE
  - FOR BALUSTRADE DETAILS INCLUDING FITTING, CONNECTIONS, AND BASEPLATE DETAILS REFER TO WCC SUPPLIED DRAWING.
  - THE GARDEN BEDS SHALL BE TESTED PRIOR TO PLANTING TO ENSURE GROUND IS FREE DRAINING. ALL PLANTS TO BE ECO-SOURCED, HARDENED OFF AND ACCLIMATISED TO THE SITE CONDITIONS PRIOR TO DELIVERY. THE CONSTRUCTOR TO ALLOW FOR 300mm MIN DEPTH OF IMPORTED TOPSOIL, WITH 75mm DEPTH OF PEBBLE MULCH (20-30mm).

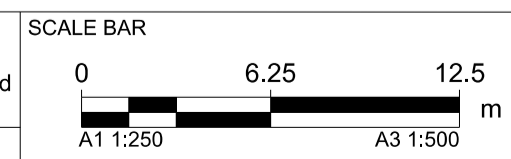
**LEGEND:**

	FOOTPATH & BUFFER ZONE - EXPOSED AGGREGATE CONCRETE
	TWO-WAY CYCLEWAY - ASPHALTIC CONCRETE
	ROAD PAVEMENT REGRADING - ASPHALTIC CONCRETE
	FOOTPATH / TRAFFIC ISLAND - BRUSHED FINISHED CONCRETE
	NEW SIGN
	NEW LIGHTING COLUMN
	NEW PAVEMENT MARKING

ORIGINAL SIZE A1 Plot By: SUBSERS \$DATES \$TIMES \$FILES

© Jacobs New Zealand Limited NZBN 9429037904685. No part of this document or the information it contains may be reproduced or transmitted in any form or by any means electronic or mechanical, including photocopying, recording, or by any information storage and retrieval system, without permission in writing from Jacobs New Zealand Limited.

DRAWN	M. RAMESH	DRAWING CHECK	D. CHESTER
DESIGNED	D. CHESTER	DESIGN REVIEW	L. WILLIAMS
APPROVED	A.MARTINDALE	DATE	23/09/2022



**KEY PLAN**

PROJECT	EVANS BAY CYCLEWAY STAGE 1 PART 3
STATUS	CONSTRUCTION
HORIZONTAL DATUM	NZGD2000 WELLINGTON CIRCUIT
VERTICAL DATUM	WELLINGTON VERTICAL DATUM 1953
A1 SCALE	1:250
A3 SCALE	1:500

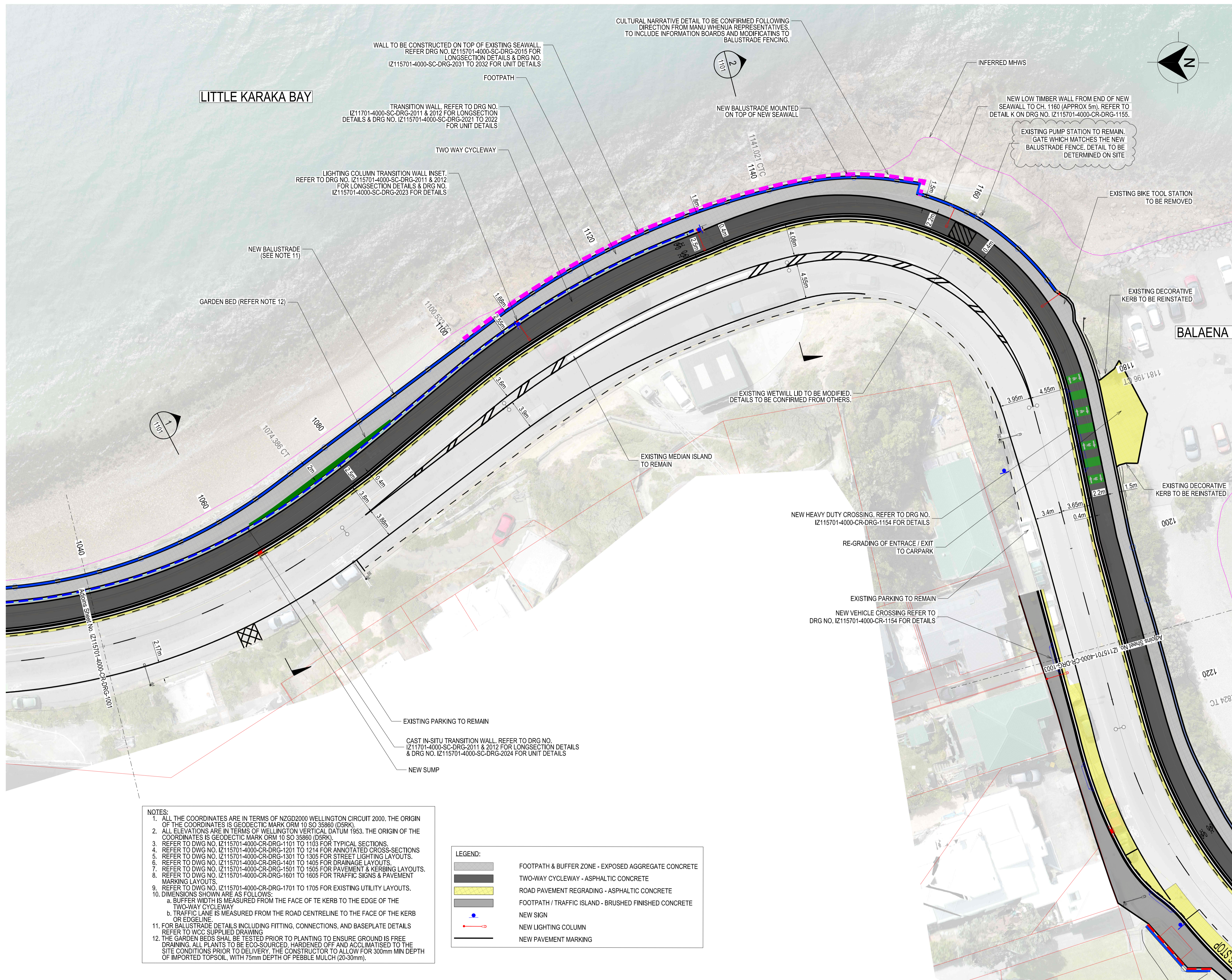
**Absolutely Positively**  
**Wellington City Council**

**Jacobs**

Me Heke Ki Pōneke

DISCIPLINE	CIVIL
TITLE	GENERAL ARRANGEMENT SHEET 1
DRAWING NUMBER	IZ115701-4000-CR-DRG-1001
REVISION	1





**NOTES:**

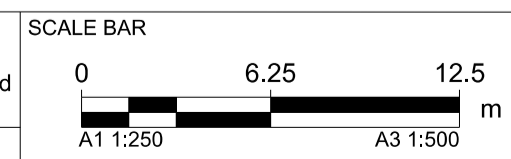
1. ALL THE COORDINATES ARE IN TERMS OF NZGD2000 WELLINGTON CIRCUIT 2000. THE ORIGIN OF THE COORDINATES IS GEODECTIC MARK ORM 10 SD 35860 (DSRK).
2. ALL ELEVATIONS ARE IN TERMS OF WELLINGTON VERTICAL DATUM 1953. THE ORIGIN OF THE COORDINATES IS GEODECTIC MARK ORM 10 SD 35860 (DSRK).
3. REFER TO DWG NO. IZ115701-4000-CR-DRG-1101 TO 1103 FOR TYPICAL SECTIONS.
4. REFER TO DWG NO. IZ115701-4000-CR-DRG-1201 TO 1214 FOR ANNOTATED CROSS-SECTIONS.
5. REFER TO DWG NO. IZ115701-4000-CR-DRG-1301 TO 1305 FOR STREET LIGHTING LAYOUTS.
6. REFER TO DWG NO. IZ115701-4000-CR-DRG-1401 TO 1405 FOR DRAINAGE LAYOUTS.
7. REFER TO DWG NO. IZ115701-4000-CR-DRG-1501 TO 1505 FOR PAVEMENT & KERBING LAYOUTS.
8. REFER TO DWG NO. IZ115701-4000-CR-DRG-1601 TO 1605 FOR TRAFFIC SIGNS & PAVEMENT MARKING LAYOUTS.
9. REFER TO DWG NO. IZ115701-4000-CR-DRG-1701 TO 1705 FOR EXISTING UTILITY LAYOUTS.
10. DIMENSIONS SHOWN ARE AS FOLLOWS:
  - a. BUFFER WIDTH IS MEASURED FROM THE FACE OF THE KERB TO THE EDGE OF THE TWO-WAY CYCLEWAY
  - b. TRAFFIC LANE IS MEASURED FROM THE ROAD CENTRELINE TO THE FACE OF THE KERB OR EDGELINE
11. FOR BALUSTRADE DETAILS INCLUDING FITTING, CONNECTIONS, AND BASEPLATE DETAILS REFER TO WCC SUPPLIED DRAWING
12. THE GARDEN BEDS SHALL BE TESTED PRIOR TO PLANTING TO ENSURE GROUND IS FREE DRAINING. ALL PLANTS TO BE ECO-SOURCED, HARDENED OFF AND ACCLIMATISED TO THE SITE CONDITIONS PRIOR TO DELIVERY. THE CONSTRUCTOR TO ALLOW FOR 300mm MIN DEPTH OF IMPORTED TOPSOIL, WITH 75mm DEPTH OF PEBBLE MULCH (20-30mm).

**LEGEND:**

	FOOTPATH & BUFFER ZONE - EXPOSED AGGREGATE CONCRETE
	TWO-WAY CYCLEWAY - ASPHALTIC CONCRETE
	ROAD PAVEMENT REGRADING - ASPHALTIC CONCRETE
	FOOTPATH / TRAFFIC ISLAND - BRUSHED FINISHED CONCRETE
	NEW SIGN
	NEW LIGHTING COLUMN
	NEW PAVEMENT MARKING

ORIGINAL SIZE A1 Plot By: SUBSERS \$DATES \$TIMES \$FILENAME: \$FILES

© Jacobs New Zealand Limited NZBN 9429037904685. No part of this document or the information it contains may be reproduced or transmitted in any form or by any means electronic or mechanical, including photocopying, recording, or by any information storage and retrieval system, without permission in writing from Jacobs New Zealand Limited.			
DRAWN	M.RAMESH	DRAWING CHECK	D.CHESTER
DESIGNED	D.CHESTER	DESIGN REVIEW	L.WILLIAMS
APPROVED	A.MARTINDALE	DATE	23/09/2022



**KEY PLAN**

PROJECT	EVANS BAY CYCLEWAY STAGE 1 PART 3
STATUS	CONSTRUCTION
HORIZONTAL DATUM	NZGD2000 WELLINGTON CIRCUIT
VERTICAL DATUM	WELLINGTON VERTICAL DATUM 1953
A1 SCALE	1:250
A3 SCALE	1:500

**Absolutely Positively Wellington City Council**

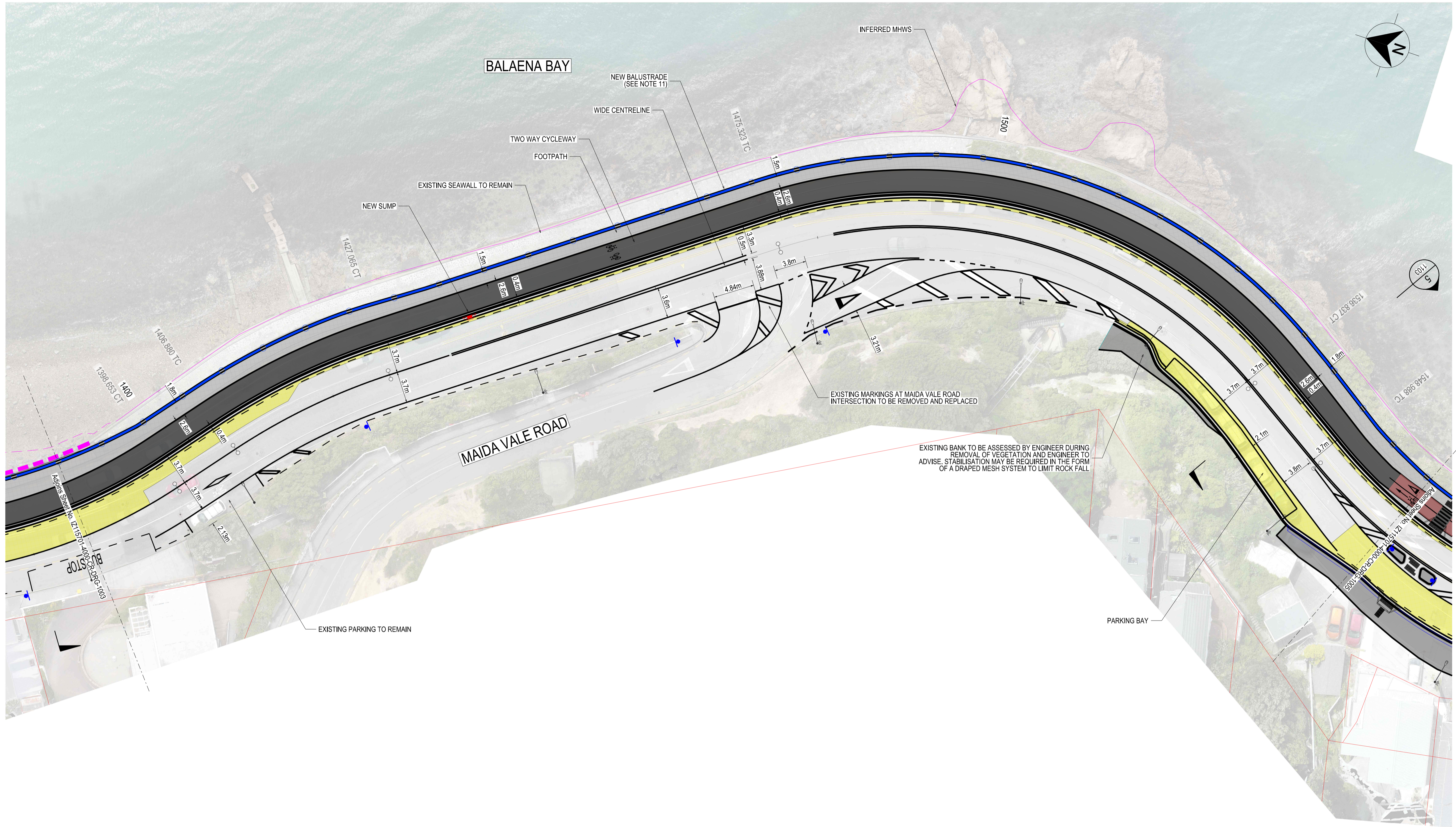
**Me Heke Ki Pōneke**

**Jacobs**

DISCIPLINE	CIVIL
TITLE	GENERAL ARRANGEMENT SHEET 2
DRAWING NUMBER	IZ115701-4000-CR-DRG-1002
REVISION	1





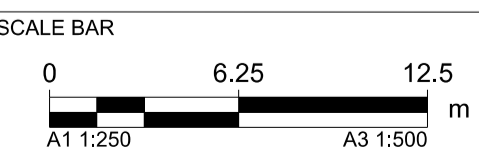


- NOTES:**
- ALL THE COORDINATES ARE IN TERMS OF NZGD2000 WELLINGTON CIRCUIT 2000. THE ORIGIN OF THE COORDINATES IS GEODECTIC MARK ORM 10 SO 35860 (DSRK).
  - ALL ELEVATIONS ARE IN TERMS OF WELLINGTON VERTICAL DATUM 1953. THE ORIGIN OF THE COORDINATES IS GEODECTIC MARK ORM 10 SO 35860 (DSRK).
  - REFER TO DWG NO. IZ115701-4000-CR-DRG-1101 TO 1103 FOR TYPICAL SECTIONS.
  - REFER TO DWG NO. IZ115701-4000-CR-DRG-1201 TO 1214 FOR ANNOTATED CROSS-SECTIONS.
  - REFER TO DWG NO. IZ115701-4000-CR-DRG-1301 TO 1305 FOR STREET LIGHTING LAYOUTS.
  - REFER TO DWG NO. IZ115701-4000-CR-DRG-1401 TO 1405 FOR DRAINAGE LAYOUTS.
  - REFER TO DWG NO. IZ115701-4000-CR-DRG-1501 TO 1505 FOR PAVEMENT & KERBING LAYOUTS.
  - REFER TO DWG NO. IZ115701-4000-CR-DRG-1601 TO 1605 FOR TRAFFIC SIGNS & PAVEMENT MARKING LAYOUTS.
  - REFER TO DWG NO. IZ115701-4000-CR-DRG-1701 TO 1705 FOR EXISTING UTILITY LAYOUTS.
  - DIMENSIONS SHOWN ARE AS FOLLOWS:
    - BUFFER WIDTH IS MEASURED FROM THE FACE OF THE KERB TO THE EDGE OF THE TWO-WAY CYCLEWAY
    - TRAFFIC LANE IS MEASURED FROM THE ROAD CENTRELINE TO THE FACE OF THE KERB OR EDGELINE.
  - FOR BALUSTRADE DETAILS INCLUDING FITTING, CONNECTIONS, AND BASEPLATE DETAILS REFER TO WCC SUPPLIED DRAWING
  - THE GARDEN BEDS SHALL BE TESTED PRIOR TO PLANTING TO ENSURE GROUND IS FREE DRAINING. ALL PLANTS TO BE ECO-SOURCED, HARDENED OFF AND ACCLIMATISED TO THE SITE CONDITIONS PRIOR TO DELIVERY. THE CONSTRUCTOR TO ALLOW FOR 300mm MIN DEPTH OF IMPORTED TOPSOIL, WITH 75mm DEPTH OF PEBBLE MULCH (20-30mm).

LEGEND:	
	FOOTPATH & BUFFER ZONE - EXPOSED AGGREGATE CONCRETE
	TWO-WAY CYCLEWAY - ASPHALTIC CONCRETE
	ROAD PAVEMENT REGRADING - ASPHALTIC CONCRETE
	FOOTPATH / TRAFFIC ISLAND - BRUSHED FINISHED CONCRETE
	NEW SIGN
	NEW LIGHTING COLUMN
	NEW PAVEMENT MARKING

© Jacobs New Zealand Limited NZBN 9429037904685. No part of this document or the information it contains may be reproduced or transmitted in any form or by any means electronic or mechanical, including photocopying, recording, or by any information storage and retrieval system, without permission in writing from Jacobs New Zealand Limited.

DRAWN	M. RAMESH	DRAWING CHECK	D.CHESTER
DESIGNED	D.CHESTER	DESIGN REVIEW	L.WILLIAMS
APPROVED	A.MARTINDALE	DATE	23/09/2022



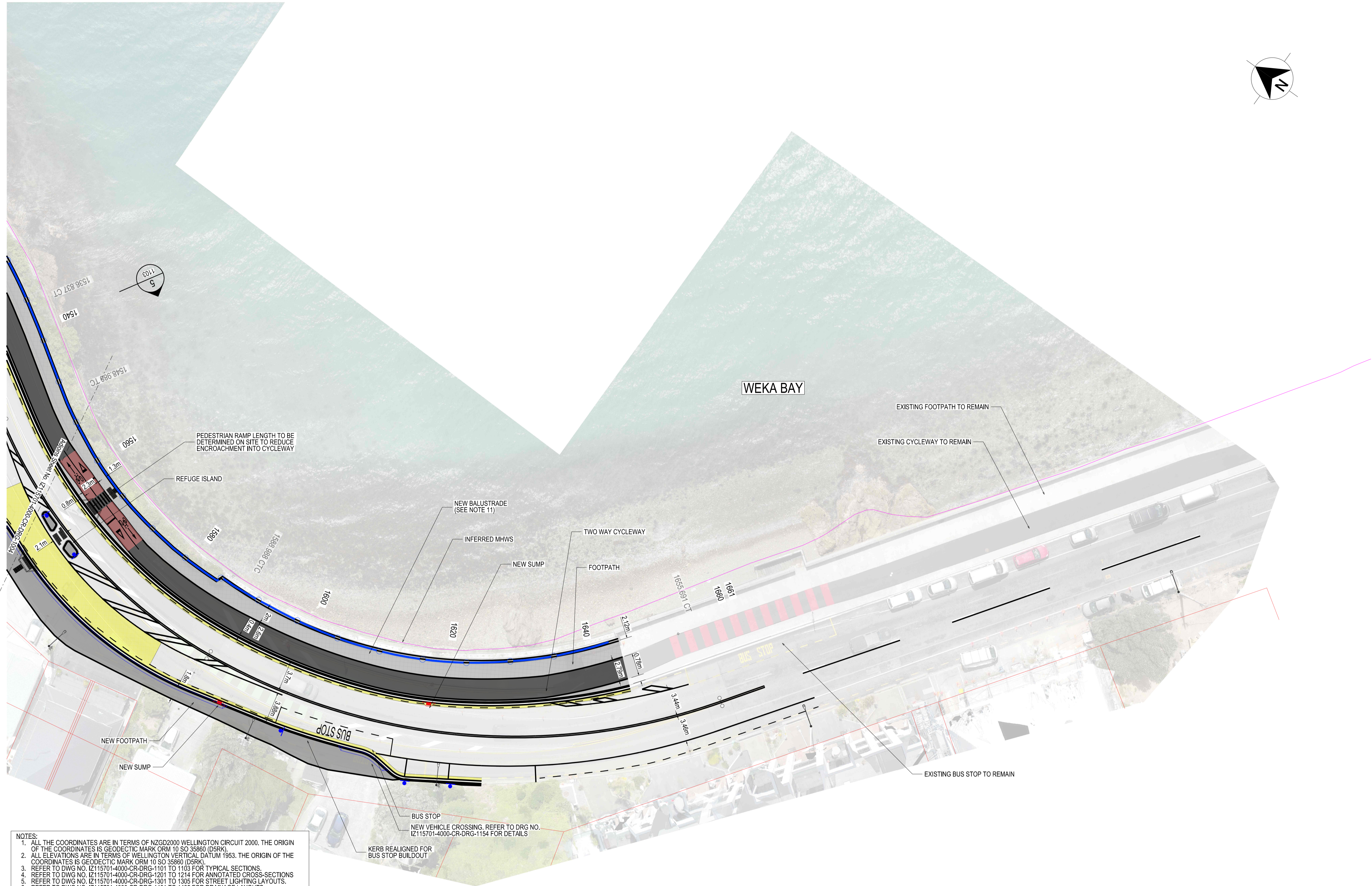
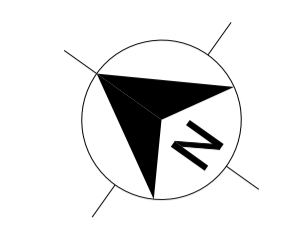
PROJECT	EVANS BAY CYCLEWAY STAGE 1 PART 3
STATUS	CONSTRUCTION
HORIZONTAL DATUM	NZGD2000 WELLINGTON CIRCUIT
VERTICAL DATUM	WELLINGTON VERTICAL DATUM 1953
A1 SCALE	1:250
A3 SCALE	1:500

**Absolutely Positively**  
**Wellington City Council**  
Me Heke Ki Pōneke

DISCIPLINE	CIVIL
TITLE	GENERAL ARRANGEMENT SHEET 4
DRAWING NUMBER	IZ115701-4000-CR-DRG-1004
REVISION	1

ORIGINAL SIZE A1 Plot By: SUBUSERS \$DATES \$TIMES \$FILES





**NOTES:**

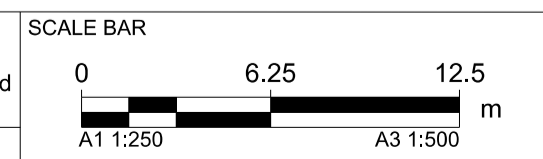
1. ALL THE COORDINATES ARE IN TERMS OF NZGD2000 WELLINGTON CIRCUIT 2000. THE ORIGIN OF THE COORDINATES IS GEODETIC MARK ORM 10 SO 35860 (D5RK).
2. ALL ELEVATIONS ARE IN TERMS OF WELLINGTON VERTICAL DATUM 1953. THE ORIGIN OF THE COORDINATES IS GEODETIC MARK ORM 10 SO 35860 (D5RK).
3. REFER TO DWG NO. IZ115701-4000-CR-DRG-1101 TO 1103 FOR TYPICAL SECTIONS.
4. REFER TO DWG NO. IZ115701-4000-CR-DRG-1201 TO 1214 FOR ANNOTATED CROSS-SECTIONS.
5. REFER TO DWG NO. IZ115701-4000-CR-DRG-1301 TO 1305 FOR STREET LIGHTING LAYOUTS.
6. REFER TO DWG NO. IZ115701-4000-CR-DRG-1401 TO 1405 FOR DRAINAGE LAYOUTS.
7. REFER TO DWG NO. IZ115701-4000-CR-DRG-1501 TO 1505 FOR PAVEMENT & KERBING LAYOUTS.
8. REFER TO DWG NO. IZ115701-4000-CR-DRG-1601 TO 1605 FOR TRAFFIC SIGNS & PAVEMENT MARKING LAYOUTS.
9. REFER TO DWG NO. IZ115701-4000-CR-DRG-1701 TO 1705 FOR EXISTING UTILITY LAYOUTS.
10. DIMENSIONS SHOWN ARE AS FOLLOWS:
  - a. BUFFER WIDTH IS MEASURED FROM THE FACE OF THE KERB TO THE EDGE OF THE TWO-WAY CYCLEWAY.
  - b. TRAFFIC LANE IS MEASURED FROM THE ROAD CENTRELINE TO THE FACE OF THE KERB OR EDGELINE.
11. FOR BALUSTRADE DETAILS INCLUDING FITTING, CONNECTIONS, AND BASEPLATE DETAILS REFER TO WCC SUPPLIED DRAWING.
12. THE GARDEN BEDS SHALL BE TESTED PRIOR TO PLANTING TO ENSURE GROUND IS FREE DRAINING. ALL PLANTS TO BE ECO-SOURCED, HARDENED OFF AND ACCLIMATISED TO THE SITE CONDITIONS PRIOR TO DELIVERY. THE CONSTRUCTOR TO ALLOW FOR 300mm MIN DEPTH OF IMPORTED TOPSOIL, WITH 75mm DEPTH OF PEBBLE MULCH (20-30mm).

**LEGEND:**

	FOOTPATH & BUFFER ZONE - EXPOSED AGGREGATE CONCRETE
	TWO-WAY CYCLEWAY - ASPHALTIC CONCRETE
	ROAD PAVEMENT REGRADING - ASPHALTIC CONCRETE
	FOOTPATH / TRAFFIC ISLAND - BRUSHED FINISHED CONCRETE
	NEW SIGN
	NEW LIGHTING COLUMN
	NEW PAVEMENT MARKING

REV	DATE	REVISION DESCRIPTION
1	16/03/2023	FOR CONSTRUCTION

DRAWN	M.RAMESH	DRAWING CHECK	D.CHESTER
DESIGNED	D.CHESTER	DESIGN REVIEW	L.WILLIAMS
APPROVED	A.MARTINDALE	DATE	23/09/2022



KEY PLAN

PROJECT  
 EVANS BAY CYCLEWAY  
 STAGE 1 PART 3

**Absolutely Positively**  
 Wellington City Council

**Jacobs**

Me Heke Ki Pōneke

STATUS  
**CONSTRUCTION**

HORIZONTAL DATUM  
 NZGD2000 WELLINGTON CIRCUIT

VERTICAL DATUM  
 WELLINGTON VERTICAL DATUM 1953

A1 SCALE 1:250 A3 SCALE 1:500

DISCIPLINE  
 CIVIL

TITLE  
 GENERAL ARRANGEMENT  
 SHEET 5

DRAWING NUMBER  
 IZ115701-4000-CR-DRG-1005

REVISION  
 1

ORIGINAL SIZE A1 Plot By: SUBERS\$ \$DATES \$TIMES \$FILENAME: \$FILELESS

