

LOCATION MAP

SHEET No.	TITLE
GENERAL	
SHT-ALL-001	LOCATION PLAN - AND DRAWING INDEX
GEOMETRICS	
SHT-RD-001	GEOMETRICS - SHEET LAYOUT KEY PLAN, LEGEND & GENERAL NOTES
SHT-RD-101	GEOMETRICS - GENERAL ARRANGEMENT PLAN - SHEET 1 OF 6
SHT-RD-102	GEOMETRICS - GENERAL ARRANGEMENT PLAN - SHEET 2 OF 6
SHT-RD-103	GEOMETRICS - GENERAL ARRANGEMENT PLAN - SHEET 3 OF 6
SHT-RD-104	GEOMETRICS - GENERAL ARRANGEMENT PLAN - SHEET 4 OF 6
SHT-RD-105	GEOMETRICS - GENERAL ARRANGEMENT PLAN - SHEET 5 OF 6
SHT-RD-106	GEOMETRICS - GENERAL ARRANGEMENT PLAN - SHEET 6 OF 6
SHT-RD-111	GEOMETRICS - LONGITUDINAL SECTION - MC01 - SHEET 1 OF 4
SHT-RD-112	GEOMETRICS - LONGITUDINAL SECTION - MC01 - SHEET 2 OF 4
SHT-RD-113	GEOMETRICS - LONGITUDINAL SECTION - MC01 - SHEET 3 OF 4
SHT-RD-114	GEOMETRICS - LONGITUDINAL SECTION - MC01 - SHEET 4 OF 4
SHT-RD-115	GEOMETRICS - LONGITUDINAL SECTION - MC02
SHT-RD-116	GEOMETRICS - LONGITUDINAL SECTION - MC03 - SHEET 1 OF 6
SHT-RD-117	GEOMETRICS - LONGITUDINAL SECTION - MC03 - SHEET 2 OF 6
SHT-RD-118	GEOMETRICS - LONGITUDINAL SECTION - MC03 - SHEET 3 OF 6
SHT-RD-119	GEOMETRICS - LONGITUDINAL SECTION - MC03 - SHEET 4 OF 6
SHT-RD-120	GEOMETRICS - LONGITUDINAL SECTION - MC03 - SHEET 5 OF 6
SHT-RD-121	GEOMETRICS - LONGITUDINAL SECTION - MC03 - SHEET 6 OF 6
SHT-RD-131	GEOMETRICS - DETAILED CROSS SECTIONS - SHEET 1 OF 10
SHT-RD-132	GEOMETRICS - DETAILED CROSS SECTIONS - SHEET 2 OF 10
SHT-RD-133	GEOMETRICS - DETAILED CROSS SECTIONS - SHEET 3 OF 10
SHT-RD-134	GEOMETRICS - DETAILED CROSS SECTIONS - SHEET 4 OF 10
SHT-RD-135	GEOMETRICS - DETAILED CROSS SECTIONS - SHEET 5 OF 10
SHT-RD-136	GEOMETRICS - DETAILED CROSS SECTIONS - SHEET 6 OF 10
SHT-RD-137	GEOMETRICS - DETAILED CROSS SECTIONS - SHEET 7 OF 10
SHT-RD-138	GEOMETRICS - DETAILED CROSS SECTIONS - SHEET 8 OF 10
SHT-RD-139	GEOMETRICS - DETAILED CROSS SECTIONS - SHEET 9 OF 10
SHT-RD-140	GEOMETRICS - DETAILED CROSS SECTIONS - SHEET 10 OF 10
SHT-RD-141	PAVEMENT - PAVEMENT PLAN - SHEET 1 OF 6
SHT-RD-142	PAVEMENT - PAVEMENT PLAN - SHEET 2 OF 6
SHT-RD-143	PAVEMENT - PAVEMENT PLAN - SHEET 3 OF 6
SHT-RD-144	PAVEMENT - PAVEMENT PLAN - SHEET 4 OF 6
SHT-RD-145	PAVEMENT - PAVEMENT PLAN - SHEET 5 OF 6
SHT-RD-146	PAVEMENT - PAVEMENT PLAN - SHEET 6 OF 6
SHT-RD-151	GEOMETRICS - TYPICAL CROSS SECTIONS - SHEET 1 OF 7
SHT-RD-152	GEOMETRICS - TYPICAL CROSS SECTIONS - SHEET 2 OF 7
SHT-RD-153	GEOMETRICS - TYPICAL CROSS SECTIONS - SHEET 3 OF 7
SHT-RD-154	GEOMETRICS - TYPICAL CROSS SECTIONS - SHEET 4 OF 7
SHT-RD-155	GEOMETRICS - TYPICAL CROSS SECTIONS - SHEET 5 OF 7
SHT-RD-156	GEOMETRICS - TYPICAL CROSS SECTIONS - SHEET 6 OF 7
SHT-RD-157	GEOMETRICS - TYPICAL CROSS SECTIONS - SHEET 7 OF 7
SHT-RD-161	GEOMETRIC - SITE CLEARANCE PLAN - SHEET 1 OF 6
SHT-RD-162	GEOMETRIC - SITE CLEARANCE PLAN - SHEET 2 OF 6
SHT-RD-163	GEOMETRIC - SITE CLEARANCE PLAN - SHEET 3 OF 6
SHT-RD-164	GEOMETRIC - SITE CLEARANCE PLAN - SHEET 4 OF 6
SHT-RD-165	GEOMETRIC - SITE CLEARANCE PLAN - SHEET 5 OF 6

SHEET No.	TITLE
SHT-RD-166	GEOMETRIC - SITE CLEARANCE PLAN - SHEET 6 OF 6
SHT-RD-171	GEOMETRICS -SITE DETAILS - SHEET 1 OF 9
SHT-RD-172	GEOMETRICS -SITE DETAILS - SHEET 2 OF 9
SHT-RD-173	GEOMETRICS -SITE DETAILS - SHEET 3 OF 9
SHT-RD-174	GEOMETRICS -SITE DETAILS - SHEET 4 OF 9
SHT-RD-175	GEOMETRICS -SITE DETAILS - SHEET 5 OF 9
SHT-RD-176	GEOMETRICS -SITE DETAILS - SHEET 6 OF 9
SHT-RD-177	GEOMETRICS -SITE DETAILS - SHEET 7 OF 9
SHT-RD-178	GEOMETRICS -SITE DETAILS - SHEET 8 OF 9
SHT-RD-179	GEOMETRICS -SITE DETAILS - SHEET 9 OF 9
SHT-RD-201	GEOMETRICS -SPEED TABLE - TYPICAL DETAILS
SHT-RD-202	GEOMETRICS -TYPICAL CONSTRUCTION DETAILS
SIGNS AND ROAD MARKINGS	
SHT-LS-001	SIGNS AND ROAD MARKINGS - SHEET LAYOUT KEY PLAN, LEGEND & - GENERAL NOTES
SHT-LS-002	SIGNS AND ROAD MARKINGS - ROAD MARKING GENERAL NOTES & - SPECIFICATIONS
SHT-LS-003	SIGNS AND ROAD MARKINGS - SIGNAGE GENERAL NOTES & - SPECIFICATIONS
SHT-LS-101	SIGNS AND ROAD MARKINGS - LAYOUT PLAN - SHEET 1 OF 6
SHT-LS-102	SIGNS AND ROAD MARKINGS - LAYOUT PLAN - SHEET 2 OF 6
SHT-LS-103	SIGNS AND ROAD MARKINGS - LAYOUT PLAN - SHEET 3 OF 6
SHT-LS-104	SIGNS AND ROAD MARKINGS - LAYOUT PLAN - SHEET 4 OF 6
SHT-LS-105	SIGNS AND ROAD MARKINGS - LAYOUT PLAN - SHEET 5 OF 6
SHT-LS-106	SIGNS AND ROAD MARKINGS - LAYOUT PLAN - SHEET 6 OF 6
SHT-LS-111	SIGNS AND ROAD MARKINGS - ROAD MARKING SCHEDULE
SHT-LS-121	SIGNS AND ROAD MARKINGS - SIGN FACE DETAILS
STORMWATER	
SHT-DR-001	STORMWATER - SHEET LAYOUT KEY PLAN, LEGEND & GENERAL NOTES
SHT-DR-101	STORMWATER - LAYOUT PLAN - SHEET 1 OF 6
SHT-DR-102	STORMWATER - LAYOUT PLAN - SHEET 2 OF 6
SHT-DR-103	STORMWATER - LAYOUT PLAN - SHEET 3 OF 6
SHT-DR-104	STORMWATER - LAYOUT PLAN - SHEET 4 OF 6
SHT-DR-105	STORMWATER - LAYOUT PLAN - SHEET 5 OF 6
SHT-DR-106	STORMWATER - LAYOUT PLAN - SHEET 6 OF 6
SHT-DR-107	STORMWATER - LONG SECTION - SHEET 1 OF 2
SHT-DR-108	STORMWATER - LONG SECTION - SHEET 2 OF 2
SHT-DR-201	STORMWATER - STANDARD DETAILS - SHEET 1 OF 2
SHT-DR-202	STORMWATER - STANDARD DETAILS - SHEET 2 OF 2
SHT-DR-203	STORMWATER - SWALE TYPICAL DETAILS - SHEET 1 OF 2
SHT-DR-204	STORMWATER - SWALE TYPICAL DETAILS - SHEET 2 OF 2
LIGHTING	
SHT-LT-001	LIGHTING - SHEET LAYOUT KEY PLAN, LEGEND & GENERAL NOTES
SHT-LT-101	LIGHTING - LAYOUT PLAN - SHEET 1 OF 6
SHT-LT-102	LIGHTING - LAYOUT PLAN - SHEET 2 OF 6
SHT-LT-103	LIGHTING - LAYOUT PLAN - SHEET 3 OF 6

SHEET No.	TITLE
SHT-LT-104	LIGHTING - LAYOUT PLAN - SHEET 4 OF 6
SHT-LT-105	LIGHTING - LAYOUT PLAN - SHEET 5 OF 6
SHT-LT-106	LIGHTING - LAYOUT PLAN - SHEET 5 OF 6
SHT-LT-111	LIGHTING - INSTALLATION NOTES
SHT-LT-112	LIGHTING - COLUMN DETAILS
UTILITIES	
SHT-UT-001	UTILITIES - EXISTING UTILITIES SHEET LAYOUT KEY PLAN, LEGEND & GENERAL NOTES
SHT-UT-101	UTILITIES - EXISTING SERVICES LAYOUT PLAN - SHEET 1 OF 6
SHT-UT-102	UTILITIES - EXISTING SERVICES LAYOUT PLAN - SHEET 2 OF 6
SHT-UT-103	UTILITIES - EXISTING SERVICES LAYOUT PLAN - SHEET 3 OF 6
SHT-UT-104	UTILITIES - EXISTING SERVICES LAYOUT PLAN - SHEET 4 OF 6
SHT-UT-105	UTILITIES - EXISTING SERVICES LAYOUT PLAN - SHEET 5 OF 6
SHT-UT-106	UTILITIES - EXISTING SERVICES LAYOUT PLAN - SHEET 6 OF 6

This drawing is confidential and shall only be used for the purpose of this project. The signing of this title block confirms the design and drafting of this project have been prepared and checked in accordance with the AECOM quality assurance system to ISO 9001-2000.



CONSULTANT
AECOM New Zealand Ltd
Company Number 4045602
www.aecom.com

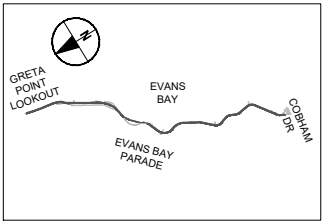


PROJECT
EVANS BAY PARADE
CYCLEWAY
STAGE 2 (NIWA TO
COBHAM DRIVE)

CLIENT



KEY PLAN



SCALE

NOT TO SCALE

STATUS

FOR CONSTRUCTION

PROJECT MANAGEMENT INITIALS

MW/ CDT DESIGNER	GD CHECKED	ZT APPROVED
---------------------	---------------	----------------

PROJECT DATA

HORIZONTAL DATUM	NZTM 2000
VERTICAL DATUM	NZVD 2016

ISSUE/REVISION

0	28.03.2024	ISSUED FOR CONSTRUCTION
I/R	DATE	DESCRIPTION

PROJECT NUMBER

60700401

SHEET TITLE

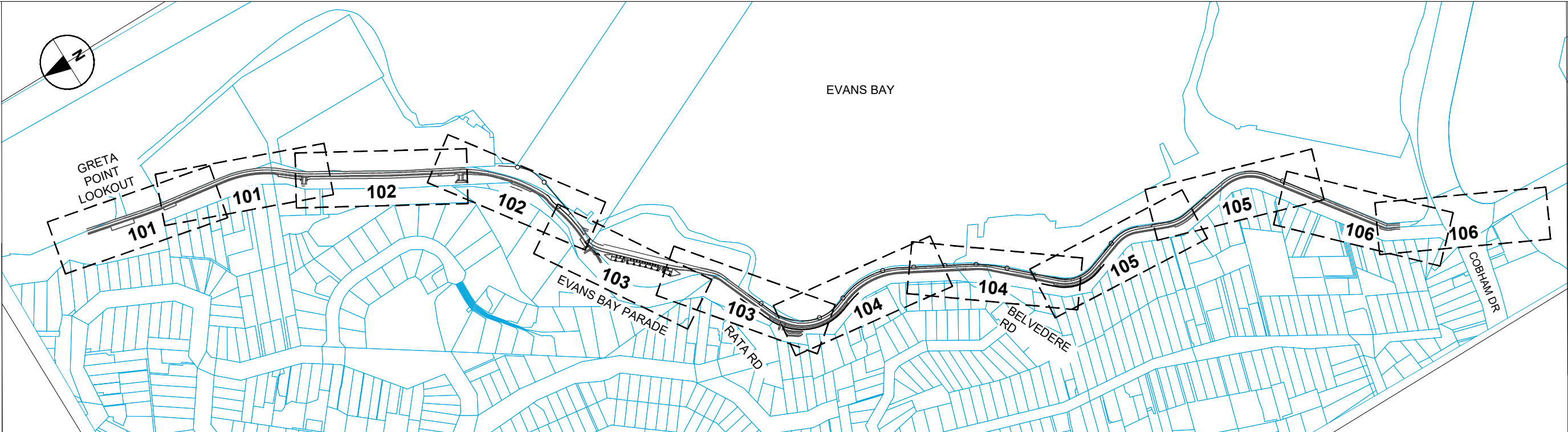
LOCATION PLAN
AND DRAWING INDEX

SHEET NUMBER

SHT-ALL-001

REV

0



SHEET LAYOUT KEY PLAN - GENERAL ARRANGEMENT PLANS

LEGEND

ROAD GEOMETRY

	PARCEL BOUNDARY
	TOPO SURVEY LINES / FEATURES
	CONTROL LINE
	RAISED SPEED TABLE
	AC CYCLEPATH
	CP02 - CONCRETE PAVING TYPE 2 (EXPOSED WITH SHELL)
	CP05 - CONCRETE PAVING TYPE 5 (BROOM WITH BLACK OXIDE)
	CP06 - CONCRETE PAVING TYPE 5 (BROOM WITH NO BLACK OXIDE)
	EXPOSED AGGREGATE CONCRETE FOOTPATH
	ASPHALT FOOTPATH
	EXPOSED AGGREGATE CONCRETE SAFETY BUFFER ZONE
	HEAVY DUTY VEHICLE CROSSING

EXISTING SERVICES

	CH	CHORUS - DUCT
	C(V0)	ONE NZ - EXISTING COMMS U/G
	G	POWER CO - GAS
	E	AUXILLIARY CABLE
	P	PUBLIC LIGHT
	E-LV	LV DUCT
	11kV	HV 11kV DUCT
	33kV	HV 33kV DUCT
	SW	STORMWATERMAIN
	WW	WATERMAIN
	WW	WASTEWATER (SEWER) MAIN
		EXISTING STORMWATER MANHOLE
		EXISTING WASTEWATER (SEWER) MANHOLE
		EXISTING WATER HYDRANT
		EXISTING WATER VALVE

GENERAL NOTES

- DO NOT SCALE OFF THESE DRAWINGS.
- ALL DIMENSIONS ARE IN METRES UNLESS NOTED OTHERWISE.
- COORDINATES ARE IN TERMS OF NZGD2000 /NEW ZEALAND TRANSVERSE MERCATOR 2000 WITH VERTICAL HEIGHTS TO NEW ZEALAND VERTICAL DATUM 2016
- REFER TO DRAWING SERIES 60700401-SHT-RD-111 TO 121 FOR LONGITUDINAL SECTIONS.
- REFER TO DRAWING SERIES 60700401-SHT-RD-131 TO 140 FOR DETAILED CROSS SECTIONS.
- REFER TO DRAWING SERIES 60700401-SHT-RD-151 TO 157 FOR TYPICAL CROSS SECTIONS.
- REFER TO DRAWING SERIES 60700401-SHT-LS-101 TO 106 FOR SIGNS AND LINE MARKINGS LAYOUT PLANS.
- GENERAL DIMENSIONS:
 - BUFFER ZONE IS MEASURED BETWEEN BACK OF THE KERB AND EDGE OF THE CYCLEPATH.
 - TRAFFIC LANES ARE MEASURED BETWEEN THE FACE OF THE KERB AND THE ROAD CENTRELINE.

This drawing is confidential and shall only be used for the purpose of this project. The signing of this title block confirms the design and drafting of this project have been prepared and checked in accordance with the AECOM quality assurance system to ISO 9001-2000.

AECOM

CONSULTANT
AECOM New Zealand Ltd
Company Number 4045602
www.aecom.com

ORIGINAL IN COLOUR

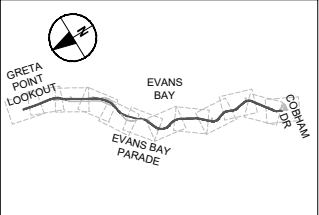
PROJECT

EVANS BAY PARADE
CYCLEWAY
STAGE 2 (NIWA TO
COBHAM DRIVE)

CLIENT

**Absolutely Positively
Wellington City Council**
Me Heke Ki Pōneke

KEY PLAN



SCALE

NOT TO SCALE

STATUS

FOR CONSTRUCTION

PROJECT MANAGEMENT INITIALS

CDT	GD	ZT
DESIGNER	CHECKED	APPROVED

PROJECT DATA

HORIZONTAL DATUM	NZTM 2000
VERTICAL DATUM	NZVD 2016

ISSUE/REVISION

I/R	DATE	DESCRIPTION
0	31.01.2024	ISSUED FOR CONSTRUCTION

PROJECT NUMBER

60700401

SHEET TITLE

GEOMETRICS
SHEET LAYOUT KEY PLAN, LEGEND
& GENERAL NOTES

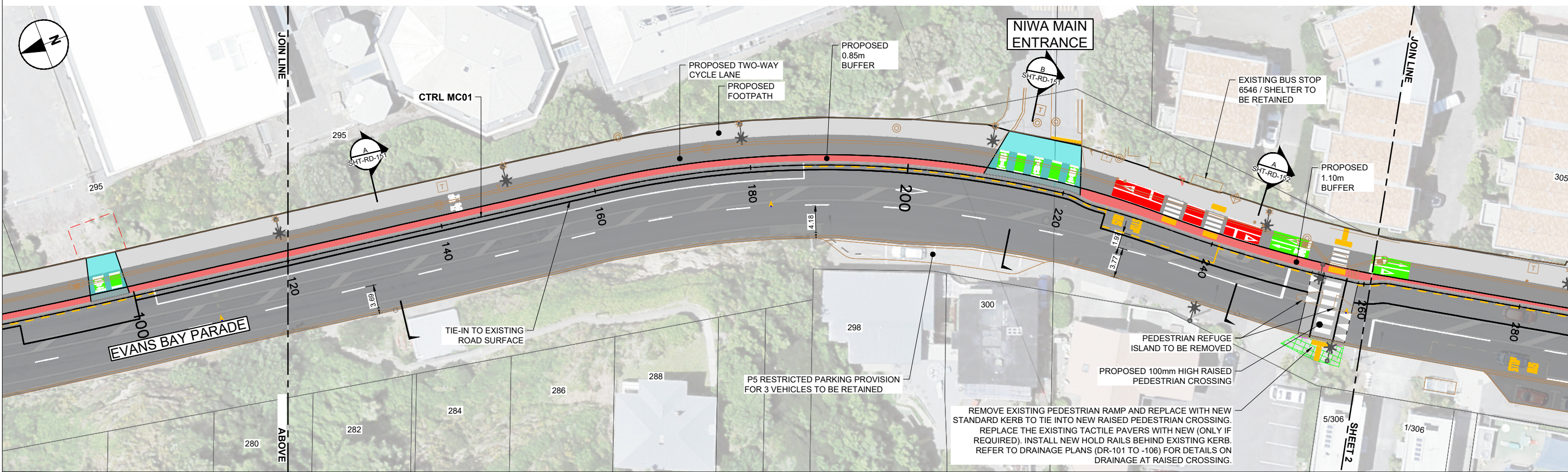
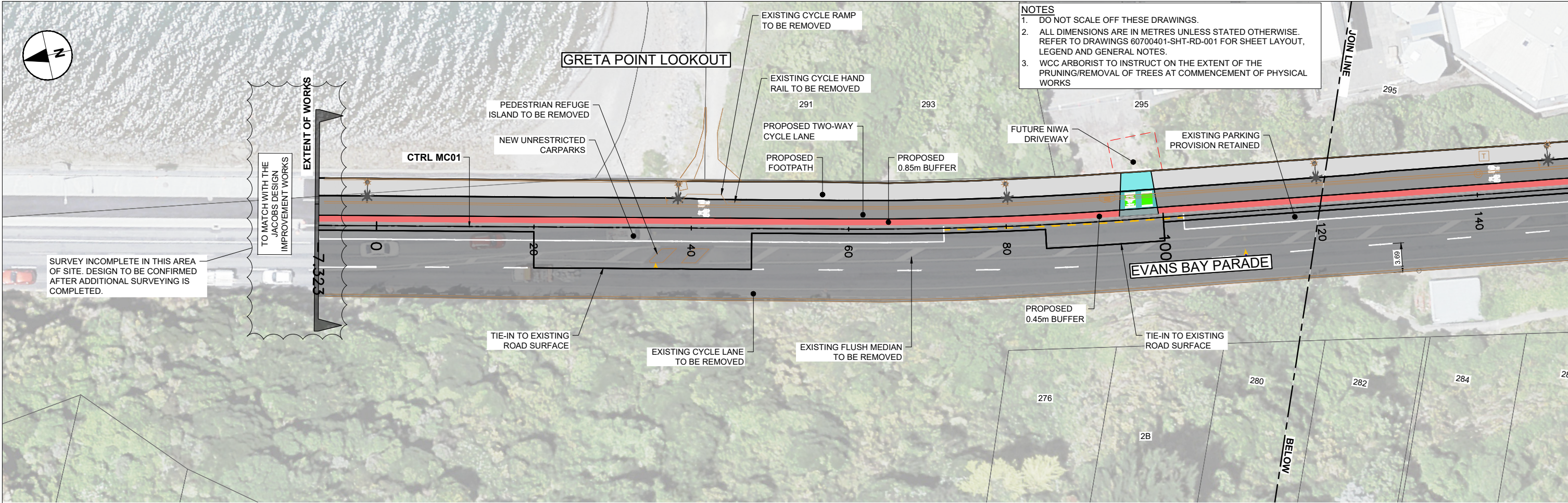
SHEET NUMBER

SHT-RD-001

REV

0

ISO A1 594mm x 841mm
Last saved by: HOLMESJ/2024/02/02 | Last Plotted: 2024/02/02
Filename: C:\USERS\HOLMESJ\DC\ACCORDS\AECOM\CI-APAC (NZ) 60700401-WCC EVANS BAY STAGE 2 NIWA TO COBHAM DRIVE\PROJECT FILES\930_01-DRAWINGS\01 BIM\01_WIP\01_DRAWINGS\01 ROAD\60700401-SHT-RD-101-106 IFC SET.DWG

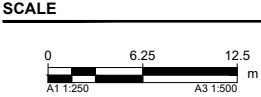
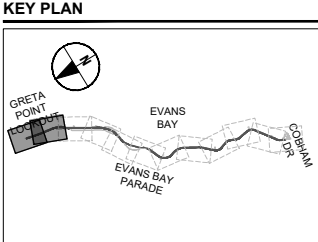


This drawing is confidential and shall only be used for the purpose of this project. The signing of this title block confirms the design and drafting of this project have been prepared and checked in accordance with the AECOM quality assurance system to ISO 9001-2000.

AECOM
CONSULTANT
AECOM New Zealand Ltd
Company Number 4045602
www.aecom.com

PROJECT
EVANS BAY PARADE
CYCLEWAY
STAGE 2 (NIWA TO
COBHAM DRIVE)

CLIENT
Absolutely Positively
Wellington City Council
Me Heke Ki Pōneke



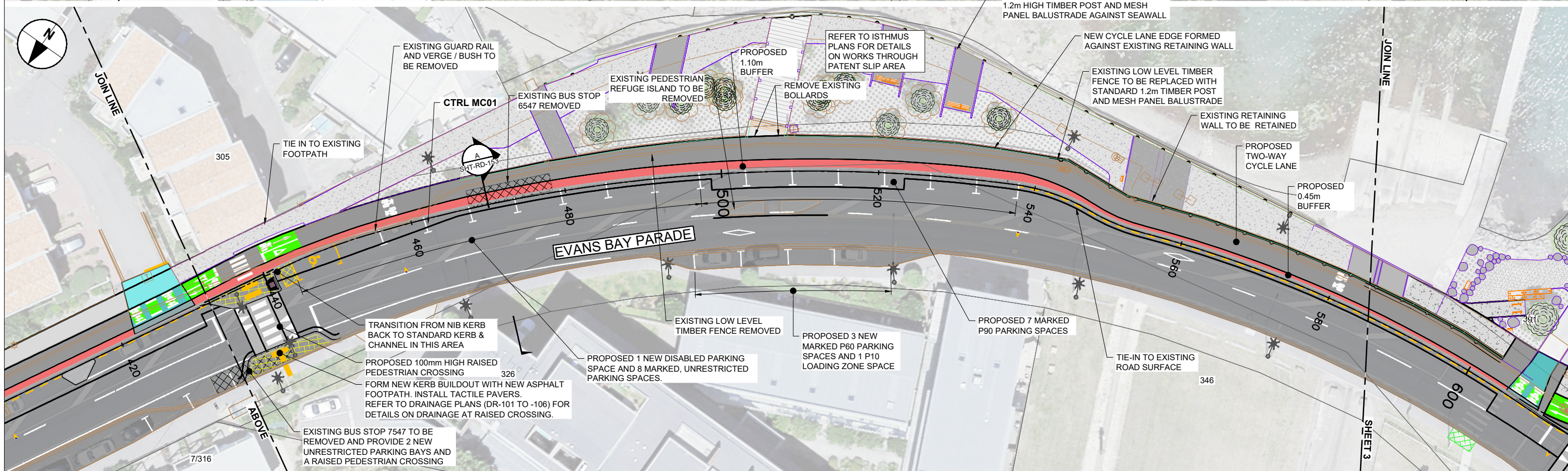
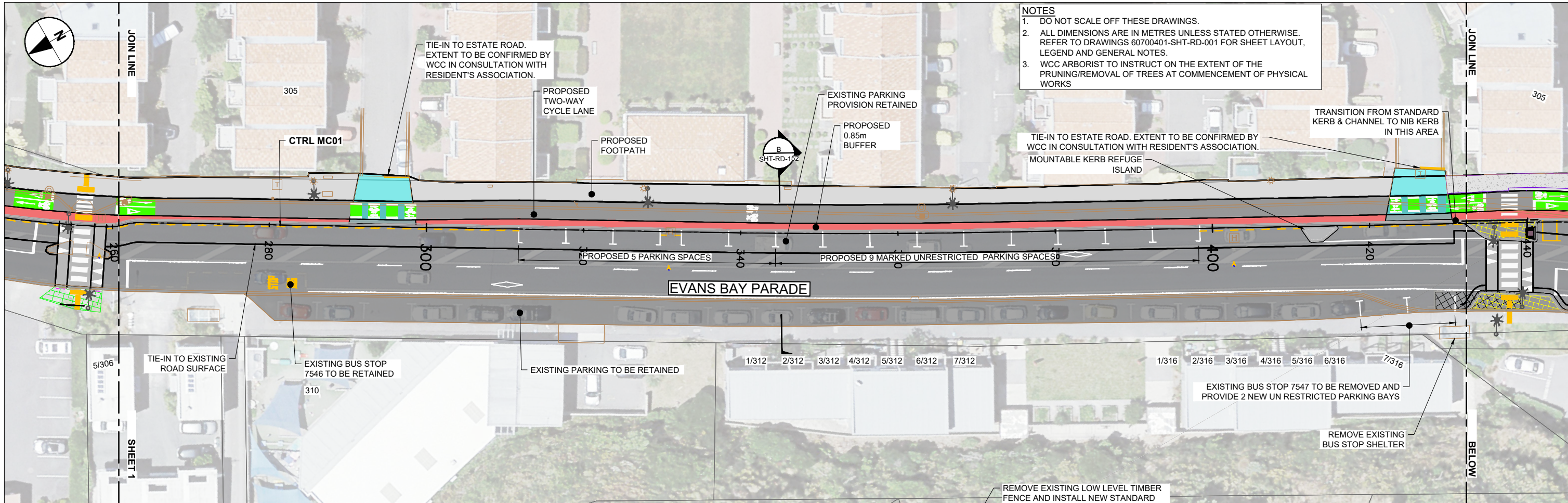
STATUS
FOR CONSTRUCTION

PROJECT MANAGEMENT INITIALS		
MW/ CDT	GD	ZT
DESIGNER	CHECKED	APPROVED
PROJECT DATA		
HORIZONTAL DATUM	NZTM 2000	
VERTICAL DATUM	NZVD 2016	

ISSUE/REVISION		
0	31.01.2024	ISSUED FOR CONSTRUCTION
I/R	DATE	DESCRIPTION

PROJECT NUMBER	
60700401	
SHEET TITLE	
GEOMETRICS GENERAL ARRANGEMENT PLAN SHEET 1 OF 6	
SHEET NUMBER	REV
SHT-RD-101	0





This drawing is confidential and shall only be used for the purpose of this project. The signing of this title block confirms the design and drafting of this project have been prepared and checked in accordance with the AECOM quality assurance system to ISO 9001-2000.

AECOM

CONSULTANT

AECOM New Zealand Ltd
Company Number 4045602
www.aecom.com



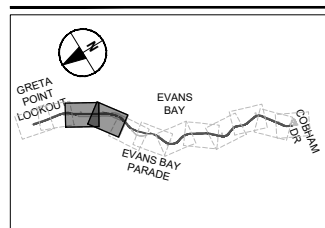
PROJECT

EVANS BAY PARADE
CYCLEWAY
STAGE 2 (NIWA TO
COBHAM DRIVE)

CLIENT

Absolutely Positively
Wellington City Council
Me Heke Ki Pōneke

KEY PLAN



SCALE



STATUS

FOR CONSTRUCTION

PROJECT MANAGEMENT INITIALS

MW/ CDT	GD	ZT
DESIGNER	CHECKED	APPROVED

PROJECT DATA

HORIZONTAL DATUM	NZTM 2000
VERTICAL DATUM	NZVD 2016

ISSUE/REVISION

0	31.01.2024	ISSUED FOR CONSTRUCTION
I/R	DATE	DESCRIPTION

PROJECT NUMBER

60700401

SHEET TITLE

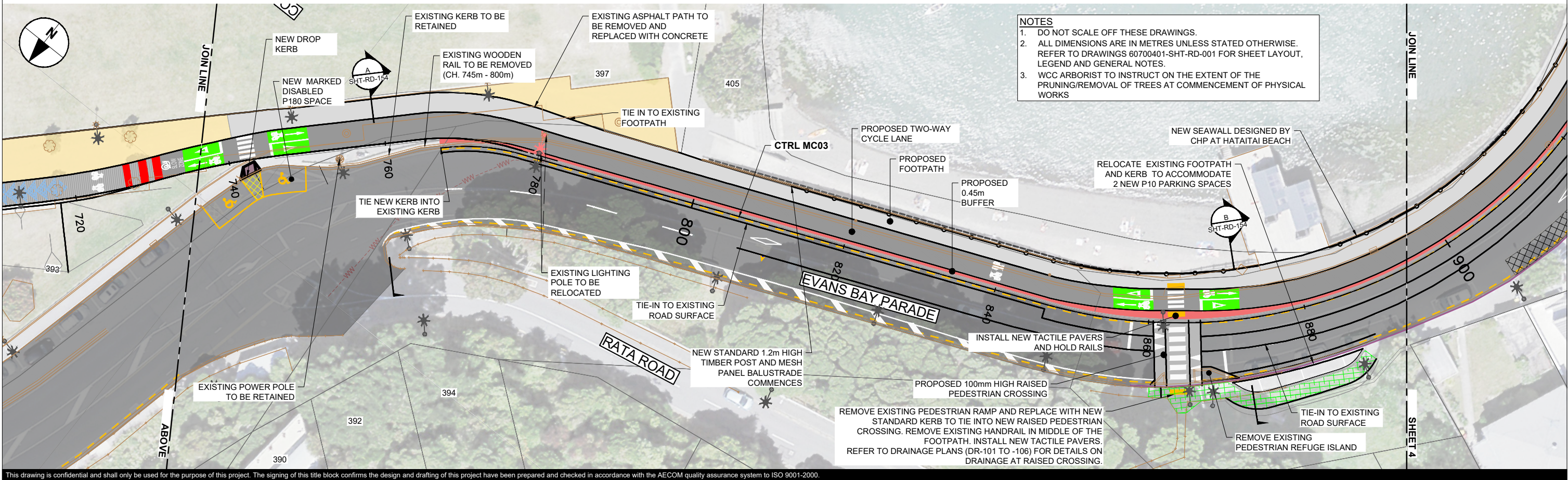
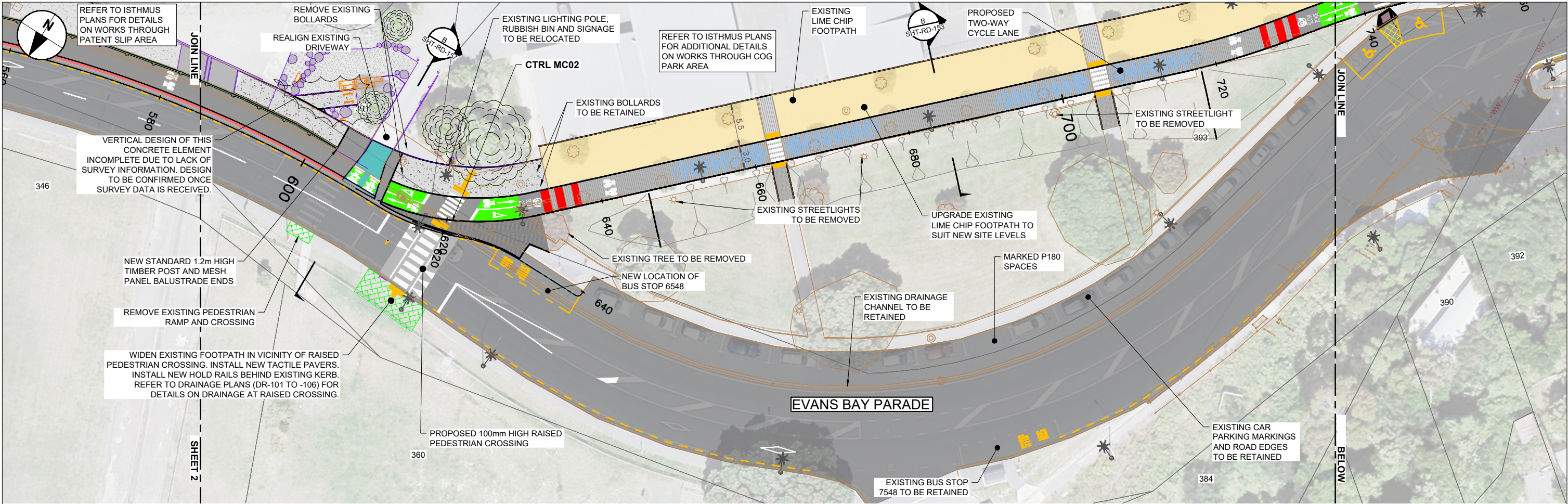
GEOMETRICS
GENERAL ARRANGEMENT PLAN
SHEET 2 OF 6

SHEET NUMBER

SHT-RD-102

REV

0



This drawing is confidential and shall only be used for the purpose of this project. The signing of this title block confirms the design and drafting of this project have been prepared and checked in accordance with the AECOM quality assurance system to ISO 9001-2000.

AECOM

CONSULTANT
AECOM New Zealand Ltd
Company Number 4045602
www.aecom.com

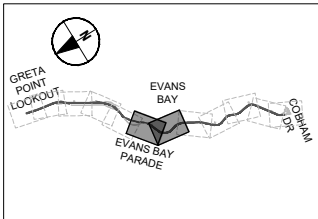


PROJECT
EVANS BAY PARADE
CYCLEWAY
STAGE 2 (NIWA TO
COBHAM DRIVE)

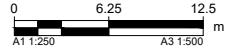
CLIENT

Absolutely Positively
Wellington City Council
Me Heke Ki Pōneke

KEY PLAN



SCALE



STATUS

FOR CONSTRUCTION

PROJECT MANAGEMENT INITIALS

MW/	CDT	GD	ZT
DESIGNER	CHECKED	APPROVED	

PROJECT DATA

HORIZONTAL DATUM	NZTM 2000
VERTICAL DATUM	NZVD 2016

ISSUE/REVISION

0	31.01.2024	ISSUED FOR CONSTRUCTION
I/R	DATE	DESCRIPTION

PROJECT NUMBER

60700401

SHEET TITLE

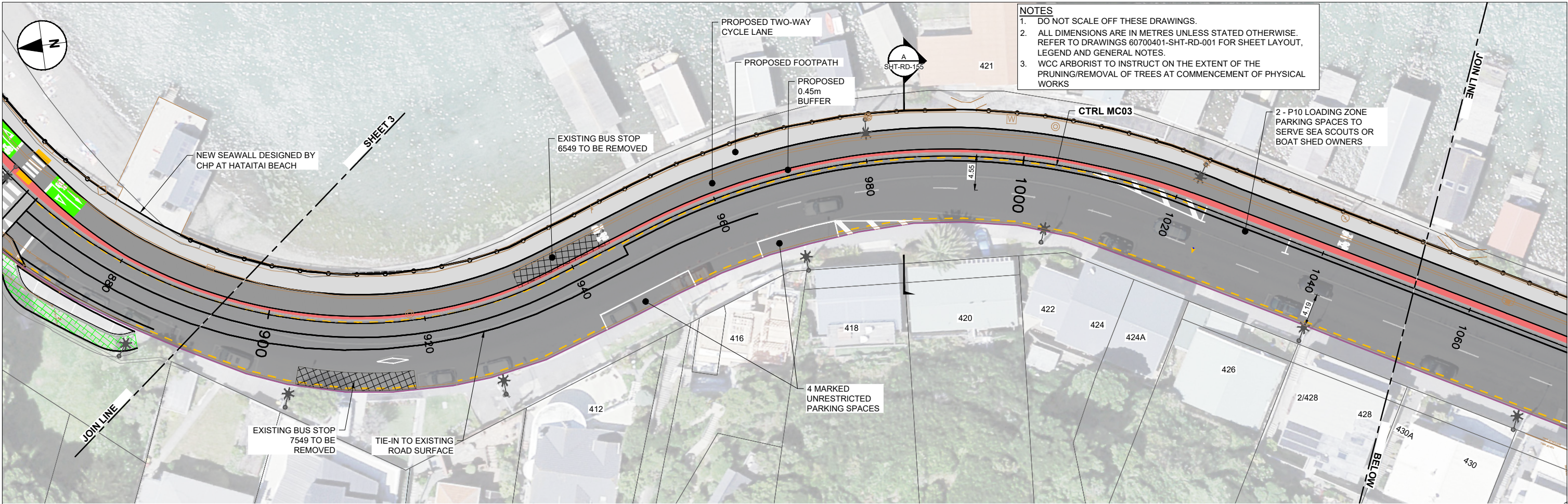
GEOMETRICS
GENERAL ARRANGEMENT PLAN
SHEET 3 OF 6

SHEET NUMBER

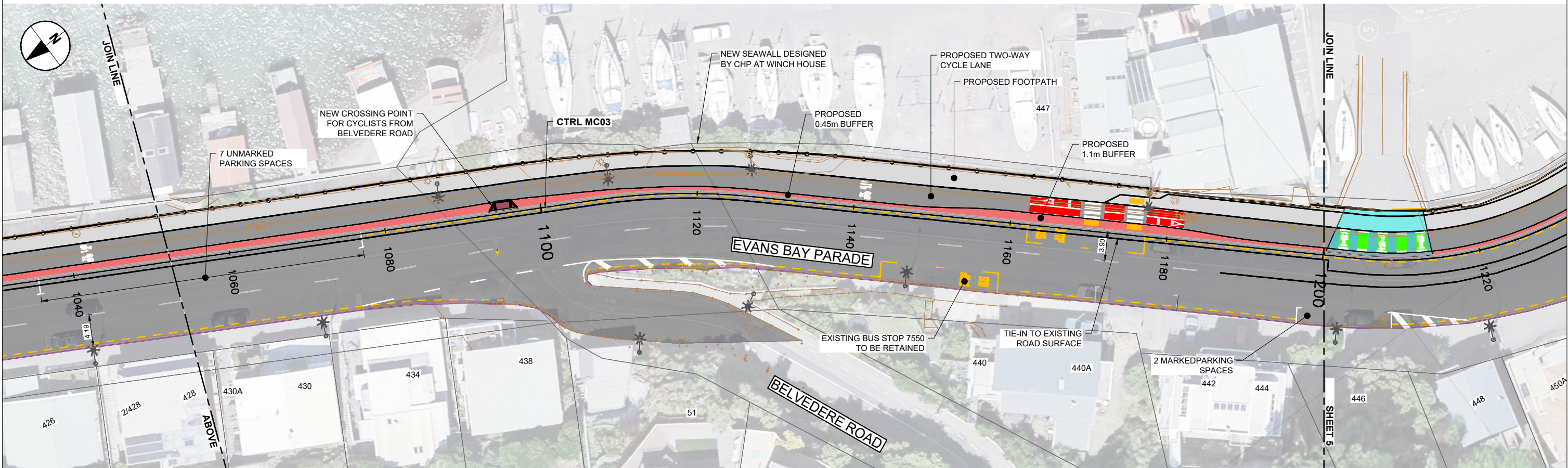
SHT-RD-103

REV

0



- NOTES**
- DO NOT SCALE OFF THESE DRAWINGS.
 - ALL DIMENSIONS ARE IN METRES UNLESS STATED OTHERWISE. REFER TO DRAWINGS 60700401-SHT-RD-001 FOR SHEET LAYOUT, LEGEND AND GENERAL NOTES.
 - WCC ARBORIST TO INSTRUCT ON THE EXTENT OF THE PRUNING/REMOVAL OF TREES AT COMMENCEMENT OF PHYSICAL WORKS



This drawing is confidential and shall only be used for the purpose of this project. The signing of this title block confirms the design and drafting of this project have been prepared and checked in accordance with the AECOM quality assurance system to ISO 9001-2000.

AECOM

CONSULTANT
AECOM New Zealand Ltd
Company Number 4045602
www.aecom.com

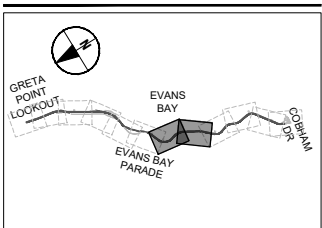


PROJECT
EVANS BAY PARADE
CYCLEWAY
STAGE 2 (NIWA TO
COBHAM DRIVE)

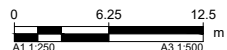
CLIENT

**Absolutely Positively
Wellington City Council**
Me Heke Kī Pōneke

KEY PLAN



SCALE



STATUS

FOR CONSTRUCTION

PROJECT MANAGEMENT INITIALS

MW/ CDT	GD	ZT
DESIGNER	CHECKED	APPROVED

PROJECT DATA

HORIZONTAL DATUM	NZTM 2000
VERTICAL DATUM	NZVD 2016

ISSUE/REVISION

0	31.01.2024	ISSUED FOR CONSTRUCTION
I/R	DATE	DESCRIPTION

PROJECT NUMBER

60700401

SHEET TITLE

GEOMETRICS
GENERAL ARRANGEMENT PLAN
SHEET 4 OF 6

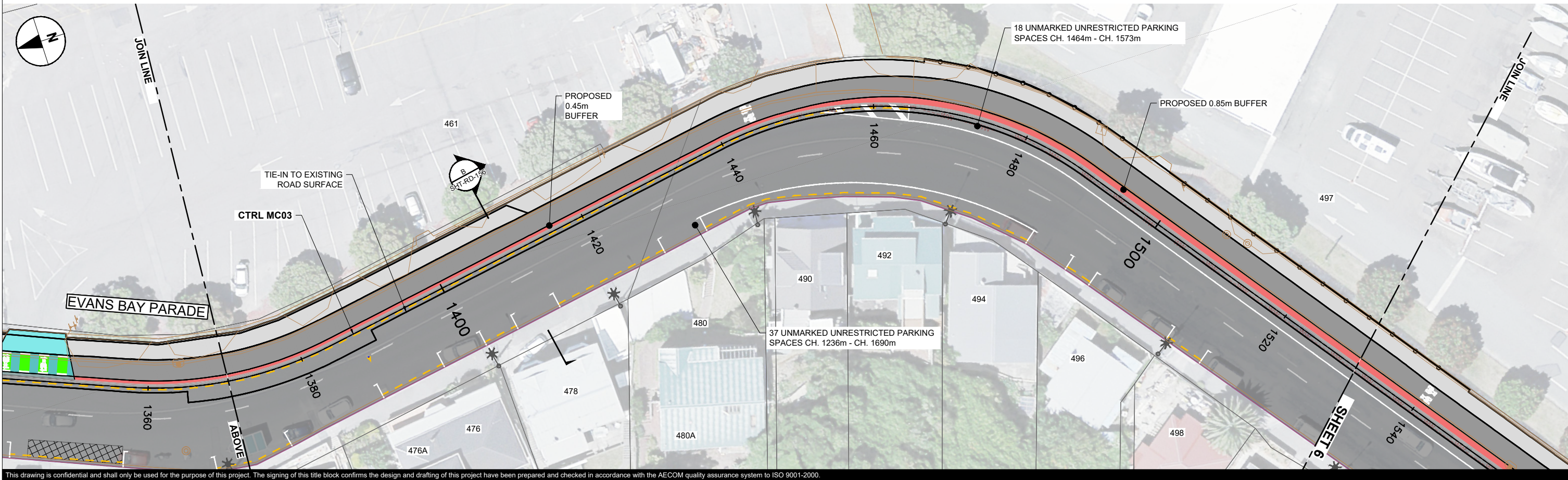
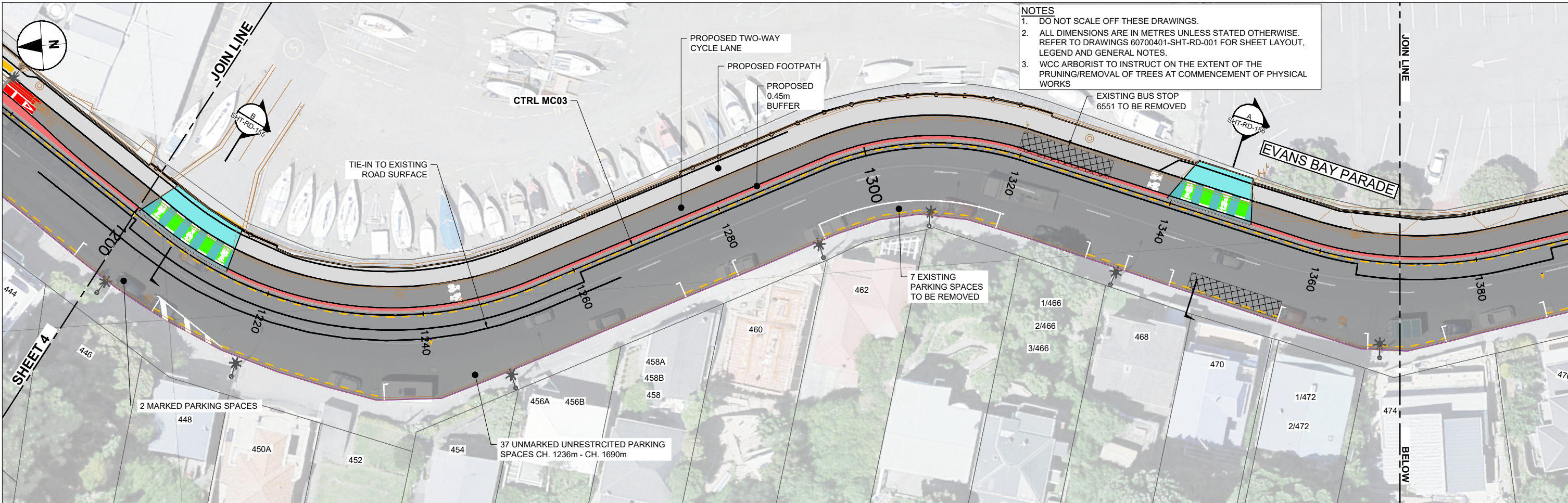
SHEET NUMBER

SHT-RD-104

REV

0

ISO A1 594mm x 841mm



This drawing is confidential and shall only be used for the purpose of this project. The signing of this title block confirms the design and drafting of this project have been prepared and checked in accordance with the AECOM quality assurance system to ISO 9001-2000.

AECOM

CONSULTANT
AECOM New Zealand Ltd
Company Number 4045602
www.aecom.com

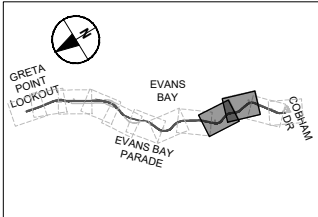
ORIGINAL IN COLOUR

PROJECT
EVANS BAY PARADE
CYCLEWAY
STAGE 2 (NIWA TO
COBHAM DRIVE)

CLIENT

Absolutely Positively
Wellington City Council
Me Heke Ki Pōneke

KEY PLAN



SCALE



STATUS

FOR CONSTRUCTION

PROJECT MANAGEMENT INITIALS

MW/ CDT	GD	ZT
DESIGNER	CHECKED	APPROVED

PROJECT DATA

HORIZONTAL DATUM	NZTM 2000
VERTICAL DATUM	NZVD 2016

ISSUE/REVISION

0	31.01.2024	ISSUED FOR CONSTRUCTION
I/R	DATE	DESCRIPTION

PROJECT NUMBER

60700401

SHEET TITLE

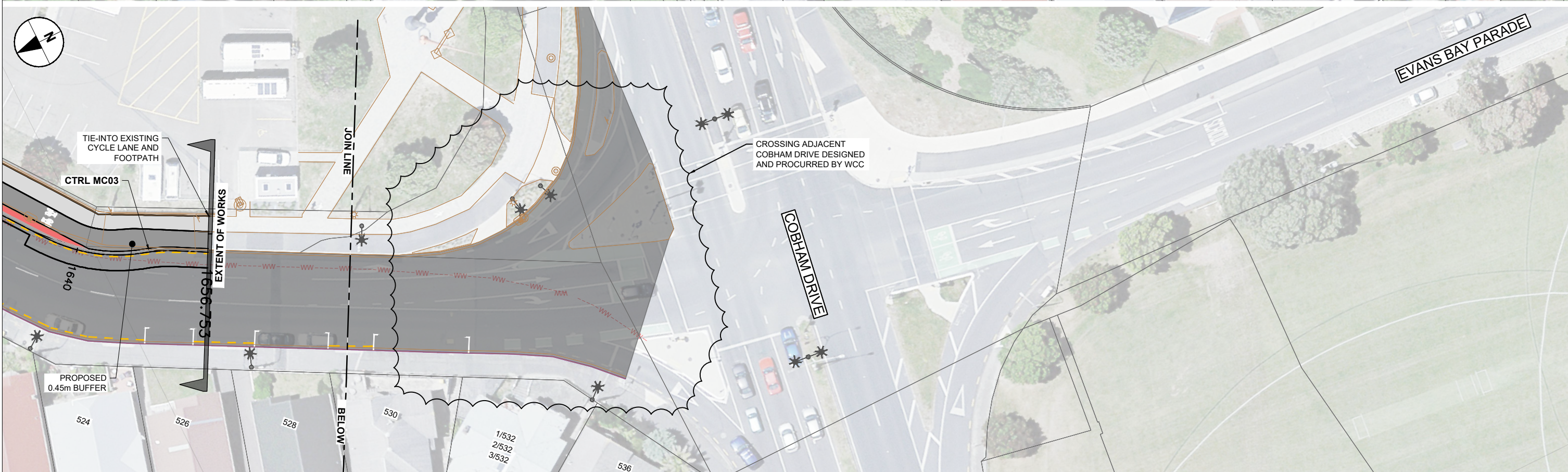
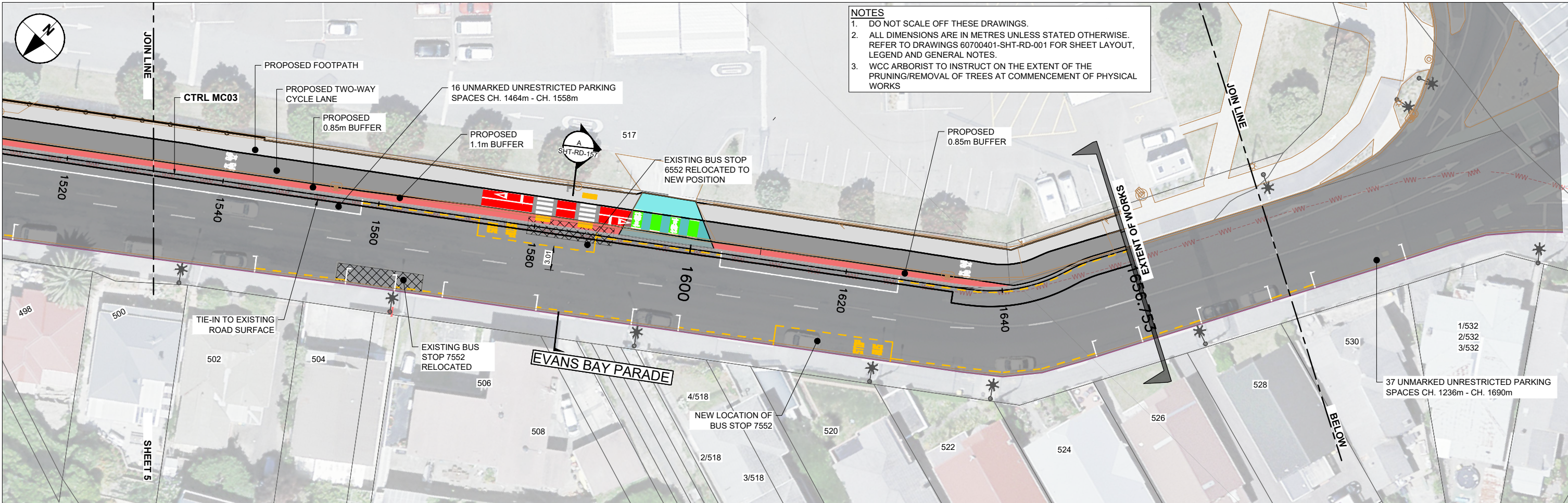
GEOMETRICS
GENERAL ARRANGEMENT PLAN
SHEET 5 OF 6

SHEET NUMBER

SHT-RD-105

REV

0



This drawing is confidential and shall only be used for the purpose of this project. The signing of this title block confirms the design and drafting of this project have been prepared and checked in accordance with the AECOM quality assurance system to ISO 9001-2000.

AECOM

CONSULTANT
AECOM New Zealand Ltd
Company Number 4045602
www.aecom.com

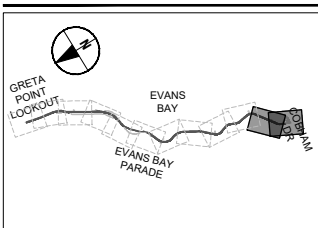
ORIGINAL IN COLOUR

PROJECT
EVANS BAY PARADE
CYCLEWAY
STAGE 2 (NIWA TO
COBHAM DRIVE)

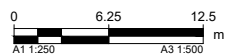
CLIENT

Absolutely Positively
Wellington City Council
Me Heke Ki Pōneke

KEY PLAN



SCALE



STATUS

FOR CONSTRUCTION

PROJECT MANAGEMENT INITIALS

MW/ CDT	GD	ZT
DESIGNER	CHECKED	APPROVED

PROJECT DATA

HORIZONTAL DATUM	NZTM 2000
VERTICAL DATUM	NZVD 2016

ISSUE/REVISION

I/R	DATE	DESCRIPTION
0	31.01.2024	ISSUED FOR CONSTRUCTION

PROJECT NUMBER

60700401

SHEET TITLE

GEOMETRICS
GENERAL ARRANGEMENT PLAN
SHEET 6 OF 6

SHEET NUMBER

SHT-RD-106

REV

0