

- Reference:** TR 156 – 17
- Location:** Hutt Road and Westminster Street – Kaiwharawhara
- Proposal:** Cycle Paths, No Stopping At All Times, Time Limited Parking, Clearway
- Information:** Wellington City Council is working to make cycling safer and more convenient for people travelling on bikes. The Urban Cycleways Programme has allocated \$9 million in funding for the route from Ngauranga to the central city.

In the June 2016 meeting of the Transport and Urban Development Committee, approval was given to begin construction on a project that would see the existing shared path separated into a footpath and cycle path. To do this, the illegal parking at the back of the path would first need to be removed.

The Committee received many submissions and took a view that parking would remain on the newly constructed footpath until such time as officers could look more closely at how many vehicles are required to park in the area and where they could be relocated to.

This work has been carried out, and we now intend to phase out the parking that occurs on the footpath from the end of September 2017.

This will improve safety and allow people on bikes and on foot to use the newly upgraded walking and cycling facilities without having to negotiate vehicles parked on the path – or watch for people driving and reversing along the pathway.

### **Aotea Quay overbridge to Kaiwharawhara Stream**

In the first section between the Aotea Quay overbridge and the Kaiwharawhara Stream, we have been working with businesses to better accommodate their staff parking needs within their own sites. In early September, almost all vehicles in this section associated with adjacent businesses will be able to be accommodated elsewhere. And so, we will be putting up signs to make it clear parking is no longer permitted, and if need be, enforcement will follow.

### **North of Westminster Street**

Work has begun on the northern section of the path. Our investigation for alternative parking opportunities has not identified any suitable or affordable off-road solutions in this area. So through this traffic resolution report, we now propose to go back to the original proposition of creating parking on-road between Rangiora Avenue and Westminster Street (Placemakers' driveway to Winger BMW).

A morning peak (7am to 9.30am) clearway will be needed as traffic volumes in the morning peak require two traffic lanes, however after the

morning peak and at weekends, traffic can be accommodated in one traffic lane, leaving the kerbside lane for parking. About 70 new car parks are proposed. This will provide parking for people visiting businesses in this area.

The proposed parking will also provide an alternative for people who work in the area and currently park on the path, who need to bring a car. However, they will need to park elsewhere until 9.30am. If it is not possible for them to park within their employer's site until this time, they will potentially be able to park in Westminster Street until 9.30am and then relocate to the new on-road car parks.

Outside the two childcare centres parking can be accommodated in the morning peak as the area is slightly wider. The existing 10-minute parking restriction will remain.

### **Aotea Quay overbridge to the Tinakori Road intersection**

The section of Hutt Road south of the Aotea Quay overbridge through to the intersection of Thorndon Quay and Tinakori Road has a narrow shared path.

The community working group that looked at options through to Bunny Street has concluded that widening the path back to the road reserve boundary is more sensible than taking road space and losing the valued median and turning bays.

We are therefore proposing to widen and upgrade this section of the shared path to create separate walking and biking facilities using the publicly-owned road reserve land adjacent to the existing pathway. This can be done without affecting the road or existing on-road parking.

To give effect to this, we have included this Hutt Road extension project in this report.

The proposed change will enable us to provide the same style of separated facilities for people on foot and bikes all the way along Hutt Road from the Caltex Fuel Stop to the Tinakori Road intersection.

### **Key dates:**

- |  |                   |
|--|-------------------|
| 1) Advertisement in the Dominion Post Newspaper  | 26 September 2017 |
| 2) Feedback period closes  | 16 October 2017   |
| 3) If no objections received report sent to City Strategy Committee for approval                             | 23 November 2017  |
| 4) If objections are received, further consultation, amendment/s, or proceed with explanation as appropriate |                   |

# PROPOSED TRAFFIC RESOLUTION

## Legal description:

*Delete from Schedule D (No Stopping) of the Traffic Restrictions Schedules*

Column One	Column Two	Column Three
<b>Hutt Road</b>	No Stopping – At All Times	East side, commencing 662 metres north of its intersection with Kaiwharawhara Road and extending in a southerly direction following the eastern kerbline to its intersection with Kaiwharawhara Road.

*Delete from Schedule A (Time Limits) of the Traffic Restrictions Schedule*

Column One	Column Two	Column Three
<b>Hutt Road</b>	P10 Monday to Friday 7:30am to 9:30am and 4pm to 6pm	East side, commencing 464.9 metres north of its intersection with Kaiwharawhara Road, (Grid coordinates x= 1750281.2m, y= 5431131.6m) and extending in a northerly direction for 54 metres.
<b>Westminster Street</b>	P60 Monday to Friday, 8am–6pm	South side, commencing 25.5 metres east of its intersection with Hutt Road (grid coordinates x= 1,749,997.7 m, y= 5,430,881.9 m), and extending in an easterly direction following the southern kerbline for 23 metres (8 angle parking spaces)
<b>Westminster Street</b>	P60 Monday to Sunday, 8am–6pm	North side, commencing 14.5 metres east of its intersection with Hutt Road (grid coordinates x= 1,750,004.9 m, y= 5,430,890.0 m), and extending in an easterly direction following the northern kerbline for 19 metres (7 angle parking spaces)
<b>Westminster Street</b>	P60 Monday to Sunday, 8am–6pm	North side, commencing 6.5 metres east of its intersection with Hutt Road (grid coordinates x= 1,750,004.9 m, y= 5,430,890.0 m), and extending in an easterly direction following the northern kerbline for 8 metres (3 angle parking spaces)

# PROPOSED TRAFFIC RESOLUTION

<b>Westminster Street</b>	<i>P60 Monday to Sunday, 8am–6pm</i>	<i>North side, commencing 66.5 metres east of its intersection with Hutt Road (grid coordinates x= 1,750,004.9 m, y= 5,430,890.0 m), and extending in a southerly direction following the northern kerbline for 11.5 metres (4 angle parking spaces)</i>
<b>Westminster Street</b>	<i>P60 Monday to Sunday, 8am–6pm</i>	<i>South side, commencing 54.5 metres east of its intersection with Hutt Road (grid coordinates x= 1,749,997.7 m, y= 5,430,881.9 m), and extending in an easterly direction following the southern kerbline for 5.5 metres (2 angle parking spaces)</i>
<b>Westminster Street</b>	<i>P60 Monday to Sunday, 8am–6pm</i>	<i>South side, commencing 9 metres east of its intersection with Hutt Road (grid coordinates x= 1,749,997.7 m, y= 5,430,881.9 m), and extending in an easterly direction following the southern kerbline for 11.2 metres (4 angle parking spaces)</i>

*Add to Schedule D (No Stopping) of the Traffic Restrictions Schedule*

<b>Column One</b>	<b>Column Two</b>	<b>Column Three</b>
<b>Hutt Road</b>	<i>No stopping at all times</i>	<i>East side, commencing 577.8 metres north of its intersection with Kaiwharawhara Road, (Grid coordinates x= 1750364.0m, y= 5431208.3m) and extending in a southerly direction for 58.9 metres.</i>
<b>Hutt Road</b>	<i>No stopping at all times</i>	<i>East side, commencing 464.9 metres north of its intersection with Kaiwharawhara Road, (Grid coordinates x= 1750281.2m, y= 5431131.6m) and extending in a southerly direction for 33 metres.</i>
<b>Hutt Road</b>	<i>No stopping at all times</i>	<i>East side, commencing 396.1 metres north of its intersection with Kaiwharawhara Road, (Grid coordinates x= 1750227.4m, y= 5431088.7m) and extending in a northerly direction for 17.5 metres.</i>

# PROPOSED TRAFFIC RESOLUTION

Absolutely Positively  
Wellington City Council  
Me Heke Ki Pōneke

<b>Hutt Road</b>	No stopping at all times	East side, commencing 289.2 metres north of its intersection with Kaiwharawhara Road, (Grid coordinates x= 1750143.0m, y= 5431023.0m) and extending in a northerly direction for 17 metres.
<b>Hutt Road</b>	No stopping at all times	East side, commencing 214.4 metres north of its intersection with Kaiwharawhara Road, (Grid coordinates x= 1750085.6m, y= 5430975.1m) and extending in a northerly direction for 27 metres.
<b>Hutt Road</b>	No stopping at all times	East side, commencing at its intersection with Kaiwharawhara Road, (Grid coordinates x= 1749941.6m, y= 5430816.5m) and extending in a northerly direction for 202.4 metres.
<b>Hutt Road</b>	No stopping, 7am to 9.30am, Monday to Friday	East side, commencing 662 metres north of its intersection with Kaiwharawhara Road, (Grid coordinates x= 1750364.0m, y= 5431208.3m) and extending in a southerly direction for 143.1 metres.
<b>Hutt Road</b>	No stopping, 7am to 9.30am, Monday to Friday	East side, commencing 464.9 metres north of its intersection with Kaiwharawhara Road, (Grid coordinates x= 1750281.2m, y= 5431131.6m) and extending in a southerly direction for 262.5 metres.

Add to Schedule A (Time Limits) of the Traffic Restrictions Schedule

Column One	Column Two	Column Three
<b>Hutt Road</b>	P10 Monday to Friday 7:30am to 9:30am and 4pm to 6pm	East side, commencing 464.9 metres north of its intersection with Kaiwharawhara Road, (Grid coordinates x= 1750281.2m, y= 5431131.6m) and extending in a northerly direction for 54 metres.
<b>Westminster Street</b>	P60 Monday to Friday, 9am–6pm	South side, commencing 25.5 metres east of its intersection with Hutt Road (grid coordinates x= 1,749,997.7 m, y= 5,430,881.9 m), and extending in an easterly direction following the southern kerbline for 23 metres (8

# PROPOSED TRAFFIC RESOLUTION

Absolutely Positively  
Wellington City Council  
Me Heke Ki Pōneke

<b>Westminster Street</b>	<i>P60 Monday to Sunday, 9am–6pm</i>	<i>angle parking spaces)</i>  <i>North side, commencing 14.5 metres east of its intersection with Hutt Road (grid coordinates <math>x= 1,750,004.9</math> m, <math>y= 5,430,890.0</math> m), and extending in an easterly direction following the northern kerbline for 19 metres (7 angle parking spaces)</i>
<b>Westminster Street</b>	<i>P60 Monday to Sunday, 9am–6pm</i>	<i>North side, commencing 6.5 metres east of its intersection with Hutt Road (grid coordinates <math>x= 1,750,004.9</math> m, <math>y= 5,430,890.0</math> m), and extending in an easterly direction following the northern kerbline for 8 metres (3 angle parking spaces)</i>
<b>Westminster Street</b>	<i>P60 Monday to Sunday, 9am–6pm</i>	<i>North side, commencing 66.5 metres east of its intersection with Hutt Road (grid coordinates <math>x= 1,750,004.9</math> m, <math>y= 5,430,890.0</math> m), and extending in a southerly direction following the northern kerbline for 11.5 metres (4 angle parking spaces)</i>
<b>Westminster Street</b>	<i>P60 Monday to Sunday, 9am–6pm</i>	<i>South side, commencing 54.5 metres east of its intersection with Hutt Road (grid coordinates <math>x= 1,749,997.7</math> m, <math>y= 5,430,881.9</math> m), and extending in an easterly direction following the southern kerbline for 5.5 metres (2 angle parking spaces)</i>
<b>Westminster Street</b>	<i>P60 Monday to Sunday, 9am–6pm</i>	<i>South side, commencing 9 metres east of its intersection with Hutt Road (grid coordinates <math>x= 1,749,997.7</math> m, <math>y= 5,430,881.9</math> m), and extending in an easterly direction following the southern kerbline for 11.2 metres (4 angle parking spaces)</i>

# PROPOSED TRAFFIC RESOLUTION

**Absolutely Positively**  
**Wellington City Council**  
Me Heke Ki Pōneke

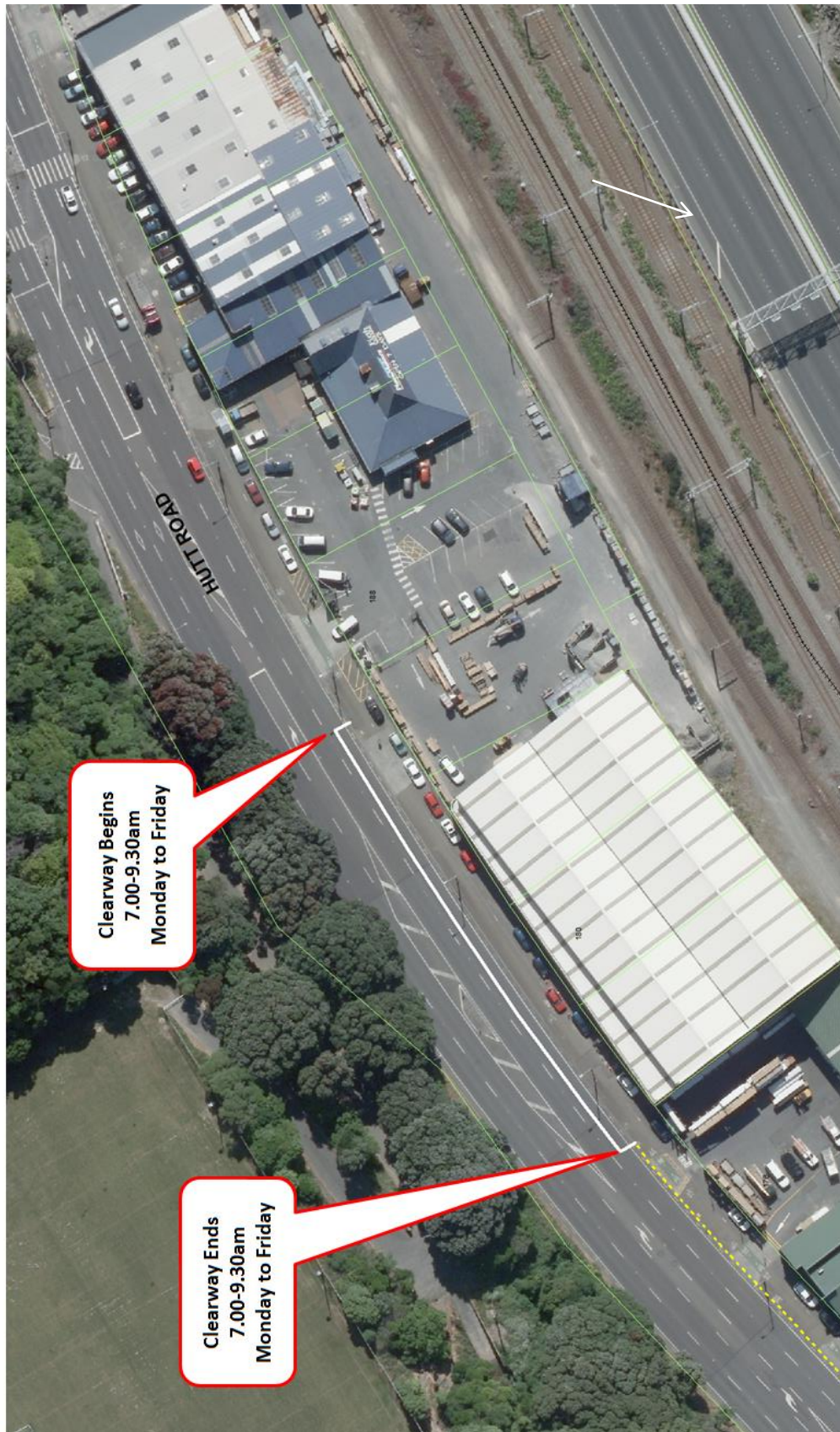
**Prepared** Paul Barker (Planning Manager Network Improvement)  
**By:**  
**Approved** Steve Spence (Chief Transport Advisor)  
**By:**  
**Date:** 20/09/17  
/

## WCC Contact:

Paul Barker  
**Planning Manager Network Improvement**  
Wellington City Council  
101 Wakefield Street / PO Box 2199,  
Wellington 6140  
Phone: +64 21 227 8043  
Email: paul.barker@wcc.govt.nz

# PROPOSED TRAFFIC RESOLUTION

Absolutely Positively  
Wellington City Council  
Me Heke Ki Pōneke

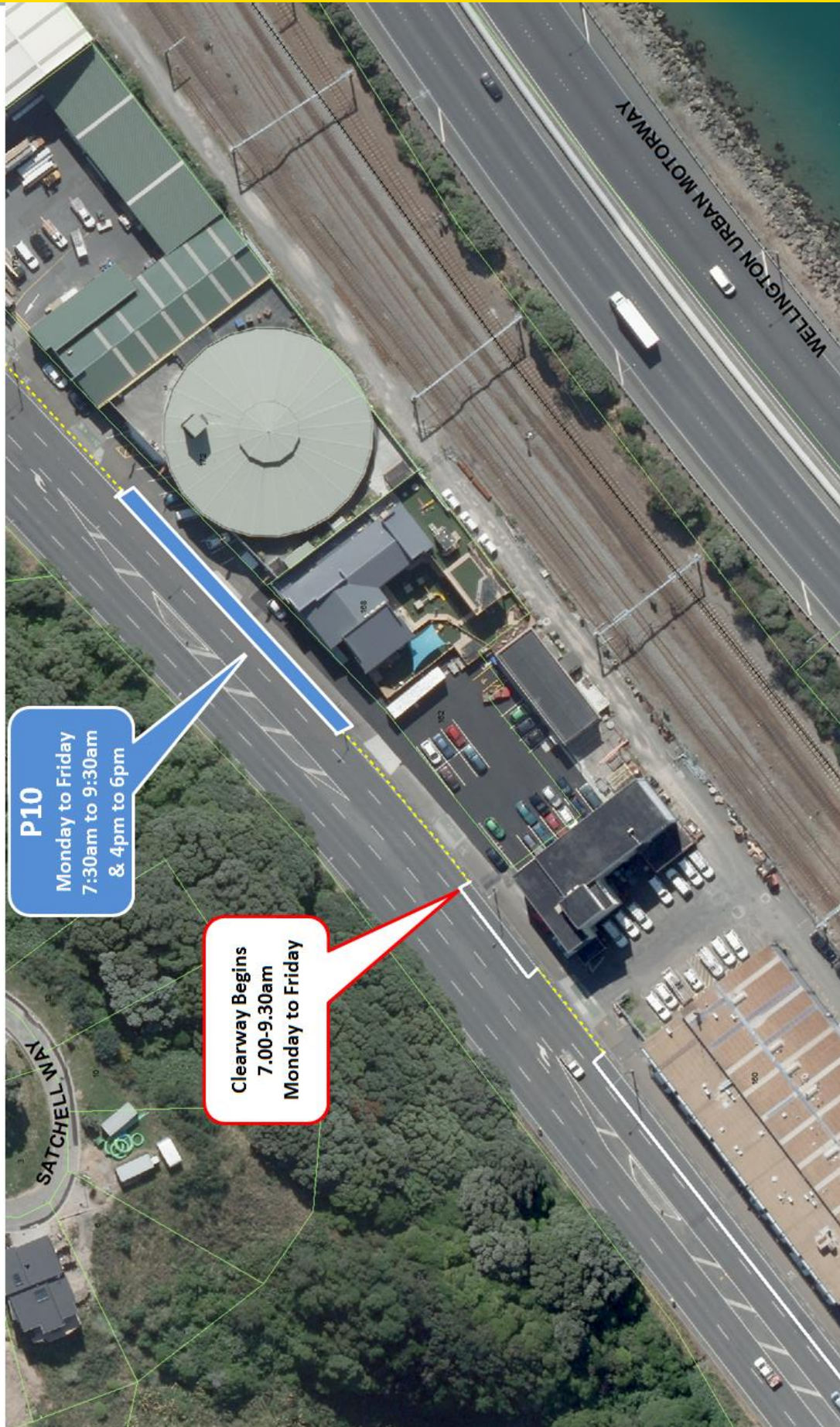


Page 1/7

Hutt Road / Westminster Street TR 156-17

# PROPOSED TRAFFIC RESOLUTION

Absolutely Positively  
Wellington City Council  
Me Heke Ki Pōneke



Page 2/7

Hutt Road / Westminister Street TR 156-17

# PROPOSED TRAFFIC RESOLUTION

Absolutely Positively  
Wellington City Council  
Me Heke Ki Pōneke



Page 3/7

Hutt Road / Westminister Street TR 156-17

# PROPOSED TRAFFIC RESOLUTION

Absolutely Positively  
Wellington City Council  
Me Heke Ki Pōneke

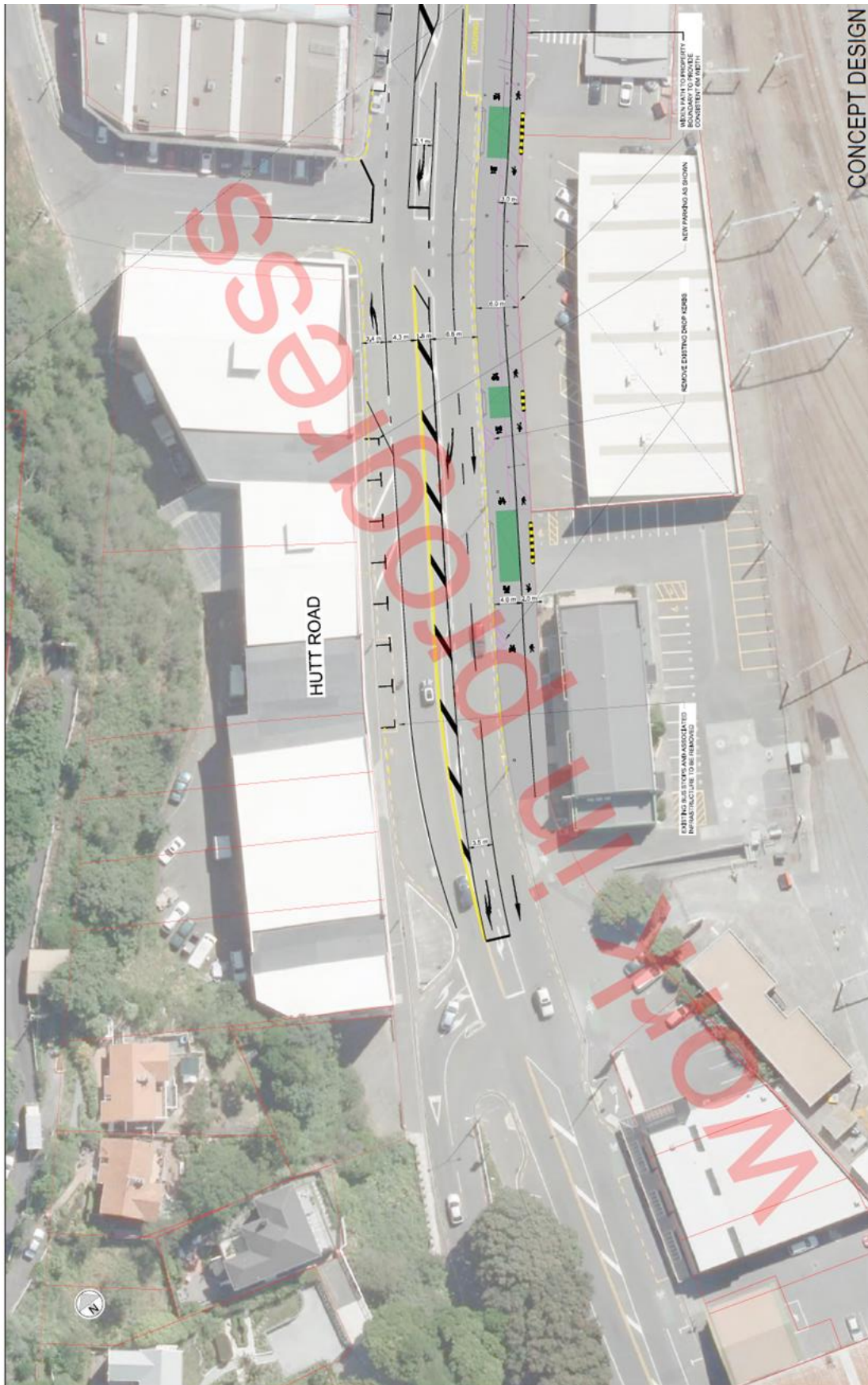


Page 4/7

Hutt Road / Westminster Street TR 156-17

# PROPOSED TRAFFIC RESOLUTION

Absolutely Positively  
Wellington City Council  
Me Heke Ki Pōneke



Hutt Road / Westminster Street TR 156-17

Page 5/7

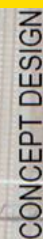
**Absolutely Positively  
Wellington City Council**  
Me Heke Ki Pōneke



Page 6/7

**Hutt Road / Westminster Street TR 156-17**

**Absolutely Positively  
Wellington City Council**  
Me Heke Ki Pōneke



**Hutt Road / Westminster Street TR 156-17**

