

A Updated following review			SI	8/11/17
Revision			App	Date
Designed	EDH	1/11/17		
Drawn	PG	1/11/17		
Reviewed	CL	1/11/17		
Approved SI		2/11/17		

Verify all dimensions on site before commencing work. Prioritise figured dimensions over scaling. Refer all discrepancies to Calibre. This document and the copyright in this document remain the property of Calibre Consulting Limited. The contents of this document may not be reproduced either in whole or in part by any means whatsoever without the prior written consent of Calibre Consulting Limited.

**Client**  
**Absolutely Positively Wellington City Council**  
Me Heke Ki Pōneke

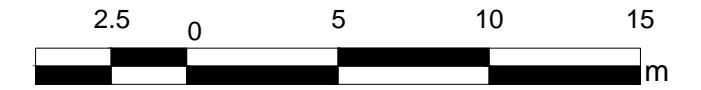
**Project Title**  
Eastern Suburbs Cycleways  
Kilbirnie Connections

**Sheet Title**  
Traffic Resolution Plan  
Te Whiti Street

Level 13, Kordia House  
109-125 Willis Street, Wellington 6011  
calibregroup.com  
+64 4 384 2029



Scale (A1 Original) 1:250 (A3) 1:500



Project No	Sheet	Revision
709549.002	TR09-1	A