

PROPOSED TRAFFIC RESOLUTION

Absolutely Positively
Wellington City Council

Me Heke Ki Pōneke

Reference: TR 165-17

Location: Oriental Parade and Evans Bay Parade, between the intersection with Carlton Gore Road (incl.) and the National Institute of Water and Atmospheric Research (NIWA) entrance at 301 Evans Bay Parade (incl.)

Proposal: Cycle path and associated parking, bus stop, pedestrian crossing, traffic lane, intersection, shared path, footpath, and driveway changes

Information: Wellington City Council (the Council) is working to make cycling safer and more convenient for people travelling on bikes. Over recent years, the Council has committed a significant amount of capital funding to cycleway development through its Long Term Plan and Annual Plan processes. The investment aims to contribute towards cycling becoming “safer and more convenient” by increasing the level of service for people who ride bikes and to encourage more people to cycle.

The Council has been working with a local stakeholder comprised Working Group since early April 2017 to identify cycling options that maximise benefits for all users and, in particular, improve the level of service for people who travel by bike. The route discussed extends from the Carlton Gore Road intersection with Oriental Parade, running east along Oriental Parade to Evans Bay Parade, and then south along Evans Bay Parade to the north side of the intersection with Cobham Drive (State Highway 1). The Working Group attended a series of five workshops between April and July 2017 to identify issues and opportunities, develop community objectives, and refine a long list of design options down to a short list to put forward for feedback from the wider community. Two community open days were held at the ASB Centre in Kilbirnie on Wednesday 6 September and Saturday 9 September 2017. Two preferred options were taken forward for public feedback.

Public feedback indicated that a separated two-way cycle path on the seaward side of Oriental Parade and Evans Bay Parade was preferred. Upon more detailed cost review by the Council, the proposal has been amended to develop the route in phases. The initial phase will be to develop the northern section of the route from the Carlton Gore intersection with Oriental Parade, extending to the NIWA entrance at 301 Evans Bay Parade, north of Greta Point.

This report seeks approval to add a separated two-way cycle path to the seaward side of Oriental Parade and Evans Bay Parade, between the Oriental Parade and Carlton Gore Road intersection and the NIWA entrance at 301 Evans Bay Parade, and the required alterations and additions to parking, bus stops, pedestrian crossings, footpaths, intersections, driveways, and traffic lanes.

The following changes are proposed:

- Remove the existing on-road cycle lanes between the Oriental Parade and Carlton Gore Road intersection and the NIWA entrance at 301 Evans Bay Parade;
- Install a separated two-way cycle path on the seaward side of Oriental Parade and Evans Bay Parade, between the Oriental Parade and Carlton Gore Road intersection and the NIWA entrance at 301 Evans Bay Parade. The width of the cycle path will vary in width between 2.0 m to 3.0 m along the route;
- The separated cycle path is proposed to be raised above road level;
- Provide cycle path transition treatment to the east of Carlton Gore Road and

to the north of 301 Evans Bay Parade. These areas provide a transition for cyclists between the existing shared paths and the proposed cycle path;

- Alter footpath widths along the route, providing a typical width of 2.0 m, wider in some areas, with an absolute minimum width of 1.8 m in constrained areas;
- Provide two new pedestrian crossing facilities:
 - Zebra crossing at Balaena Bay, at 96 Evans Bay Parade; and
 - Zebra crossing at Kio Bay, at 212/214 Evans Bay Parade.
- Provide bus stop cycle bypasses behind bus stop pedestrian waiting platforms at southbound (seaward side) bus stop locations;
- Relocate six bus stops:
 - The *Evans Bay near Point Jerningham* southbound bus stop is proposed to be relocated 70 m north;
 - The *Little Karaka Bay (opposite)* northbound bus stop is proposed to be relocated from 48/50 Evans Bay Parade to 56/60 Evans Bay Parade and a bus shelter provided;
 - The *Evans Bay Parade at Balaena Bay* southbound bus stop is proposed to be relocated 20 m south;
 - The *Evans Bay Parade near Weka Bay* southbound bus stop is proposed to be relocated from opposite 128 Evans Bay Parade to opposite 148 Evans Bay Parade;
 - The *Kio Bay (opposite)* northbound bus stop is proposed to be relocated from 212 Evans Bay Parade to 208 Evans Bay Parade; and
 - The *Evans Bay Parade near Kio Bay* southbound bus stop is proposed to be relocated 20 m south.
- Remove one bus stop:
 - The *Evans Bay Parade (near 94)* northbound bus stop.
- Alter traffic lane widths, providing a desirable width of 3.5 m, narrowing to a minimum width of 3.3 m where space is restricted, and widening around curves where necessary for larger vehicles and to maintain the route designation as an over-dimension vehicle route;
- Parking amendments, relocation, and removal with a resultant overall reduction of 15 spaces; and
- Provide urban design and landscaping improvements, such as landscape planting, increased seating and rest areas, bike parking, and increased access to public areas and the harbour.

Key dates:

- | | |
|--|------------------|
| 1) Advertisement in The Dominion Post newspaper | 14 November 2017 |
| 2) Feedback period closes | 11 December 2017 |
| 3) If no objections received, report sent to the City Strategy Committee for approval | TBC |
| 4) If objections received, further consultation, amendment/s, or proceed with explanation as appropriate | |

PROPOSED TRAFFIC RESOLUTION

Legal Description:

Delete from Schedule B (Class Restricted Parking) of the Traffic Restrictions Schedule

Column One	Column Two	Column Three
Evans Bay Parade	<i>Bus Stop, at all times</i>	<i>East side, commencing 2545.5 metres east of its intersection with Wellington Road and extending in a northerly direction following the eastern kerbline for 12 metres.</i>
Evans Bay Parade	<i>Bus Stop, at all times</i>	<i>East side, commencing 2827.5 metres east of its intersection with Wellington Road and extending in a northerly direction following the eastern kerbline for 12 metres.</i>
Evans Bay Parade	<i>Bus Stop, at all times</i>	<i>East side, commencing 3131 metres east of its intersection with Wellington Road and extending in a northerly direction following the eastern kerbline for 12 metres.</i>
Evans Bay Parade	<i>Bus Stop, at all times</i>	<i>North side, commencing 2040 metres east of its intersection with Wellington Road and extending in a westerly direction following the eastern kerbline for 16.5 metres.</i>
Evans Bay Parade	<i>Bus Stop, at all times</i>	<i>North side, commencing 3336.5 metres east of its intersection with Wellington Road and extending in a westerly direction following the eastern kerbline for 12 metres to its intersection with Oriental Parade.</i>
Evans Bay Parade	<i>Bus Stop, at all times</i>	<i>South side, commencing 85 metres south of its intersection with Maida Vale Road and extending in a westerly direction following the southern kerbline for 12 metres.</i>
Evans Bay Parade	<i>Bus Stop, at all times</i>	<i>West side, commencing 1539.5 metres west of its intersection with Rata Road and extending in a northerly direction following the western kerbline for 12 metres to its intersection with Maida Vale Road.</i>
Evans Bay Parade	<i>Bus Stop, at all times</i>	<i>West side, commencing 224.5 metres south of its intersection with Maida Vale Road and extending in a northerly direction following the western kerbline for 12 metres.</i>
Evans Bay Parade	<i>Bus Stop, at all times</i>	<i>West side, commencing 511.5 metres south of its intersection with Maida Vale Road and extending in a northerly direction following the southern kerbline for 12 metres.</i>

PROPOSED TRAFFIC RESOLUTION

Absolutely Positively
Wellington City Council

Me Heke Ki Pōneke

Evans Bay Parade	<i>Bus Stop, at all times</i>	<i>West side, commencing 665.5 metres south of its intersection with Maida Vale Road and extending in a northerly direction following the western kerbline for 12 metres.</i>
-------------------------	-------------------------------	---

Delete from Schedule D (No Stopping Restriction) of the Traffic Restrictions Schedule

Column One	Column Two	Column Three
Oriental Parade	<i>No Stopping, at all times</i>	<i>Southeast side, following the kerbline 202.5 metres northeast of its intersection with Carlton Gore Road (Grid Coordinates X=2660735.147996 m, Y=5989405.572124 m) and extending in a north-easterly direction for 6.5 metres.</i>
Oriental Parade	<i>No Stopping, at all times</i>	<i>Southeast side, following the kerbline 43 metres northeast of its intersection with Carlton Gore Road (Grid Coordinates X=2660735.147996 m, Y=5989405.572124 m) and extending in a north-easterly direction for 49 metres.</i>
Oriental Parade	<i>No Stopping, at all times</i>	<i>Southeast side, following the kerbline from its intersection with Carlton Gore Road (Grid Coordinates X=2660735.147996 m, Y=5989405.572124 m) and extending in a north-easterly direction for 12.5 metres.</i>
Evans Bay Parade	<i>No Stopping, at all times</i>	<i>East side, commencing 1522 metres from its intersection with Wellington Road and extending in a northerly direction following the eastern kerbline for 3 metres.</i>
Evans Bay Parade	<i>No Stopping, at all times</i>	<i>East side, commencing 1540 metres east of its intersection with Wellington Road and extending in a northerly direction following the eastern kerbline for 5 metres.</i>
Evans Bay Parade	<i>No Stopping, at all times</i>	<i>East side, commencing from the vehicle crossing of the Balaena Bay off street parking area (Grid Coordinates x= 1751018.0 m. y= 54273.7 m), and extending in a southerly direction following the eastern kerbline for 210 metres.</i>

PROPOSED TRAFFIC RESOLUTION

Absolutely Positively
Wellington City Council

Me Heke Ki Pōneke

Evans Bay Parade	<i>No Stopping, at all times</i>	<i>South side, commencing 1008.5 metres west of its intersection with Rata Road and extending in a westerly direction following the western kerbline for 5 metres.</i>
Evans Bay Parade	<i>No Stopping, at all times</i>	<i>South side, commencing 1066 metres west of its intersection with Rata Road and extending in a westerly direction following the western kerbline for 17 metres.</i>
Evans Bay Parade	<i>No Stopping, at all times</i>	<i>South side, commencing 1107 metres west of its intersection with Rata Road and extending in a westerly direction following the western kerbline for 18 metres.</i>
Evans Bay Parade	<i>No Stopping, at all times</i>	<i>West side of Evans Bay Parade, commencing 30m south east of its southern boundary of its intersection with Pahia Street and extending in an easterly direction following the western kerbline for 70m.</i>
Evans Bay Parade	<i>No Stopping, at all times</i>	<i>West side, commencing 1134.5 metres west of its intersection with Rata Road and extending in a northerly direction following the western kerbline for 15 metres.</i>
Evans Bay Parade	<i>No Stopping, at all times</i>	<i>West side, commencing 380m from its intersection with Maida Vale Road and extending in a northerly direction following the western kerbline for 18m.</i>
Evans Bay Parade	<i>No Stopping, at all times</i>	<i>West side, commencing 580m from its intersection with Maida Vale Road and extending in a northerly direction following the western kerbline for 51m.</i>
Evans Bay Parade	<i>No Stopping, at all times</i>	<i>West side, commencing 581.5 metres south of its intersection with Maida Vale Road and extending in a northerly direction following the western kerbline for 57 metres.</i>

PROPOSED TRAFFIC RESOLUTION

Absolutely Positively
Wellington City Council

Me Heke Ki Pōneke

Add to Schedule B (Class Restricted Parking) of the Traffic Restrictions Schedule

Column One	Column Two	Column Three
Evans Bay Parade	<i>Bus Stop, at all times</i>	<i>East side, commencing 204 m south of its intersection with Oriental Parade (Grid coordinates X = 2661054.4 m Y = 5989641.3 m) and extending in a southerly direction following the eastern kerbline for 15 m.</i>
Evans Bay Parade	<i>Bus Stop, at all times</i>	<i>East side, commencing 458.5 m south of its intersection with Oriental Parade (Grid coordinates X = 2661054.4 m Y = 5989641.3 m) and extending in a southerly direction following the eastern kerbline for 15 m.</i>
Evans Bay Parade	<i>Bus Stop, at all times</i>	<i>East side, commencing 777.5 m south of its intersection with Oriental Parade (Grid coordinates X = 2661054.4 m Y = 5989641.3 m) and extending in a southerly direction following the eastern kerbline for 15 m.</i>
Evans Bay Parade	<i>Bus Stop, at all times</i>	<i>East side, commencing 1116.5 m south of its intersection with Oriental Parade (Grid coordinates X = 2661054.4 m Y = 5989641.3 m) and extending in a southerly direction following the eastern kerbline for 15 m.</i>
Evans Bay Parade	<i>Bus Stop, at all times</i>	<i>East side, commencing 1570.5 m south of its intersection with Oriental Parade (Grid coordinates X = 2661054.4 m Y = 5989641.3 m) and extending in a southerly direction following the eastern kerbline for 15 m.</i>
Evans Bay Parade	<i>Bus Stop, at all times</i>	<i>West side, commencing 257.5 m south of its intersection with Oriental Parade (Grid coordinates X = 2661053.3 m Y = 5989631.0 m) and extending in a southerly direction following the western kerbline for 15 m.</i>
Evans Bay Parade	<i>Bus Stop, at all times</i>	<i>West side, commencing 473.5 m south of its intersection with Oriental Parade (Grid coordinates X = 2661053.3 m Y = 5989631.0 m) and extending in a southerly direction following the western kerbline for 15 m.</i>

PROPOSED TRAFFIC RESOLUTION

Absolutely Positively
Wellington City Council

Me Heke Ki Pōneke

Evans Bay Parade	<i>Bus Stop, at all times</i>	West side, commencing 833.5 m south of its intersection with Oriental Parade (Grid coordinates X = 2661053.3 m Y = 5989631.0 m) and extending in a southerly direction following the western kerbline for 15 m.
Evans Bay Parade	<i>Bus Stop, at all times</i>	West side, commencing 121.5 m south of its intersection with Maida Vale Road (Grid coordinates X = 2661017.7 m, Y = 5988818.6 m) and extending in a southerly direction following the western kerbline for 15.5 m.
Evans Bay Parade	<i>Bus Stop, at all times</i>	West side, commencing 542.5 m south of its intersection with Maida Vale Road (Grid coordinates X = 2661017.7 m, Y = 5988818.6 m) and extending in a southerly direction following the western kerbline for 15 m.

Add to Schedule C (Direction, Placement and Lane Use) of the Traffic Restrictions Schedule

Column One	Column Two	Column Three
Oriental Parade	<i>Shared Path (Two Way), at all times</i>	North side, commencing 385 m west of its intersection with Evans Bay Parade (Grid coordinates X = 2661054.4 m, Y = 5989641.3 m) and extending in a westerly direction following the northern kerbline for 102.5 m.
Oriental Parade	<i>Cycle Path (Two Way), at all times</i>	North side, commencing at its intersection with Evans Bay Parade (Grid coordinates X = 2661054.4 m, Y = 5989641.3 m) and extending in a westerly direction following the northern kerbline for 385 m.
Evans Bay Parade	<i>Cycle Path (Two Way), at all times</i>	East side, commencing at its intersection with Oriental Parade (Grid coordinates X = 2661054.4 m, Y = 5989641.3 m) and extending in a southerly direction following the eastern kerbline for 1942 m.
Evans Bay Parade	<i>Shared Path (Two Way), at all times</i>	East side, commencing 1942 m south of its intersection with Oriental Parade (Grid coordinates X = 2661054.4 m, Y = 5989641.3 m) and extending in a southerly direction following the eastern kerbline for 135.5 m.

PROPOSED TRAFFIC RESOLUTION

Absolutely Positively
Wellington City Council

Me Heke Ki Pōneke

Add to Schedule D (No Stopping Restriction) of the Traffic Restrictions Schedule

Column One	Column Two	Column Three
Oriental Parade	No Stopping, at all times	North side, commencing at its intersection with Evans Bay Parade (Grid coordinates X = 2661054.4 m, Y = 5989641.3 m) and extending in a westerly direction following the northern kerbline for 415 m.
Oriental Parade	No Stopping, at all times	South side, commencing at its intersection with Carlton Gore Road (Grid coordinates X = 2660735.2 m, Y = 5989405.4 m) and extending in a easterly direction following the southern kerbline for 12 m.
Oriental Parade	No Stopping, at all times	South side, commencing 42 m east of its intersection with Carlton Gore Road (Grid coordinates X = 2660735.2 m, Y = 5989405.4 m) and extending in a easterly direction following the southern kerbline for 57 m.
Oriental Parade	No Stopping, at all times	South side, commencing 198 m east of its intersection with Carlton Gore Road (Grid coordinates X = 2660735.2 m, Y = 5989405.4 m) and extending in a easterly direction following the southern kerbline for 99 m.
Oriental Parade	No Stopping, at all times	South side, commencing 341 m east of its intersection with Carlton Gore Road (Grid coordinates X = 2660735.2 m, Y = 5989405.4 m) and extending in a easterly direction following the southern kerbline for 66 m to its intersection with Evans Bay Parade.
Evans Bay Parade	No Stopping, at all times	East side, commencing at its intersection with Oriental Parade (Grid coordinates X = 2661054.4 m, Y = 5989641.3 m) and extending in a southerly direction following the eastern kerbline for 67 m.
Evans Bay Parade	No Stopping, at all times	East side, commencing 195 m south of its intersection with Oriental Parade (Grid coordinates X = 2661054.4 m, Y = 5989641.3 m) and extending in a southerly direction following the eastern kerbline for 9 m.

PROPOSED TRAFFIC RESOLUTION

Absolutely Positively
Wellington City Council

Me Heke Ki Pōneke

Evans Bay Parade	<i>No Stopping, at all times</i>	<i>East side, commencing 219 m south of its intersection with Oriental Parade (Grid coordinates X = 2661054.4 m, Y = 5989641.3 m) and extending in a southerly direction following the eastern kerbline for 239.5 m.</i>
Evans Bay Parade	<i>No Stopping, at all times</i>	<i>East side, commencing 473.5 m south of its intersection with Oriental Parade (Grid coordinates X = 2661054.4 m, Y = 5989641.3 m) and extending in a southerly direction following the eastern kerbline for 304.5 m.</i>
Evans Bay Parade	<i>No Stopping, at all times</i>	<i>East side, commencing 792.5 m south of its intersection with Oriental Parade (Grid coordinates X = 2661054.4 m, Y = 5989641.3 m) and extending in a southerly direction following the eastern kerbline for 18.5 m.</i>
Evans Bay Parade	<i>No Stopping, at all times</i>	<i>East side, commencing 814.5 m south of its intersection with Oriental Parade (Grid coordinates X = 2661054.4 m, Y = 5989641.3 m) and extending in a southerly direction following the eastern kerbline for 302 m.</i>
Evans Bay Parade	<i>No Stopping, at all times</i>	<i>East side, commencing 1131.5 m south of its intersection with Oriental Parade (Grid coordinates X = 2661054.4 m, Y = 5989641.3 m) and extending in a southerly direction following the eastern kerbline for 5 m.</i>
Evans Bay Parade	<i>No Stopping, at all times</i>	<i>East side, commencing 1267 m south of its intersection with Oriental Parade (Grid coordinates X = 2661054.4 m, Y = 5989641.3 m) and extending in a southerly direction following the eastern kerbline for 258.5 m.</i>
Evans Bay Parade	<i>No Stopping, at all times</i>	<i>East side, commencing 1529 m south of its intersection with Oriental Parade (Grid coordinates X = 2661054.4 m, Y = 5989641.3 m) and extending in a southerly direction following the eastern kerbline for 23 m.</i>
Evans Bay Parade	<i>No Stopping, at all times</i>	<i>East side, commencing 1561.5 m south of its intersection with Oriental Parade (Grid coordinates X = 2661054.4 m, Y = 5989641.3 m) and extending in a southerly direction following the eastern kerbline for 9 m.</i>

PROPOSED TRAFFIC RESOLUTION

Absolutely Positively
Wellington City Council

Me Heke Ki Pōneke

Evans Bay Parade	<i>No Stopping, at all times</i>	<i>East side, commencing 1585.5 m south of its intersection with Oriental Parade (Grid coordinates X = 2661054.4 m, Y = 5989641.3 m) and extending in a southerly direction following the eastern kerbline for 126 m.</i>
Evans Bay Parade	<i>No Stopping, at all times</i>	<i>East side, commencing 1911.5 m south of its intersection with Oriental Parade (Grid coordinates X = 2661054.4 m, Y = 5989641.3 m) and extending in a southerly direction following the eastern kerbline for 77.5 m.</i>
Evans Bay Parade	<i>No Stopping, at all times</i>	<i>East side, commencing 2051 m south of its intersection with Oriental Parade (Grid coordinates X = 2661054.4 m, Y = 5989641.3 m) and extending in a southerly direction following the eastern kerbline for 30 m.</i>
Evans Bay Parade	<i>No Stopping, at all times</i>	<i>West side, commencing at its intersection with Oriental Parade (Grid coordinates X = 2661053.3 m, Y = 5989631.0 m) and extending in a southerly direction following the western kerbline for 225 m.</i>
Evans Bay Parade	<i>No Stopping, at all times</i>	<i>West side, commencing 252.5 m south of its intersection with Oriental Parade (Grid coordinates X = 2661053.3 m, Y = 5989631.0 m) and extending in a southerly direction following the western kerbline for 5 m.</i>
Evans Bay Parade	<i>No Stopping, at all times</i>	<i>West side, commencing 272.5 m south of its intersection with Oriental Parade (Grid coordinates X = 2661053.3 m, Y = 5989631.0 m) and extending in a southerly direction following the western kerbline for 86 m.</i>
Evans Bay Parade	<i>No Stopping, at all times</i>	<i>West side, commencing 468.5 m south of its intersection with Oriental Parade (Grid coordinates X = 2661053.3 m, Y = 5989631.0 m) and extending in a southerly direction following the western kerbline for 5 m.</i>
Evans Bay Parade	<i>No Stopping, at all times</i>	<i>West side, commencing 488.5 m south of its intersection with Oriental Parade (Grid coordinates X = 2661053.3 m, Y = 5989631.0 m) and extending in a southerly direction following the western kerbline for 9 m.</i>

PROPOSED TRAFFIC RESOLUTION

Absolutely Positively
Wellington City Council

Me Heke Ki Pōneke

Evans Bay Parade	<i>No Stopping, at all times</i>	<i>West side, commencing 550.5 m south of its intersection with Oriental Parade (Grid coordinates X = 2661053.3 m, Y = 5989631.0 m) and extending in a southerly direction following the western kerbline for 100 m.</i>
Evans Bay Parade	<i>No Stopping, at all times</i>	<i>West side, commencing 694.5 m south of its intersection with Oriental Parade (Grid coordinates X = 2661053.3 m, Y = 5989631.0 m) and extending in a southerly direction following the western kerbline for 102 m.</i>
Evans Bay Parade	<i>No Stopping, at all times</i>	<i>West side, commencing 800 m south of its intersection with Oriental Parade (Grid coordinates X = 2661053.3 m, Y = 5989631.0 m) and extending in a southerly direction following the western kerbline for 19 m.</i>
Evans Bay Parade	<i>No Stopping, at all times</i>	<i>West side, commencing 828.5 m south of its intersection with Oriental Parade (Grid coordinates X = 2661053.3 m, Y = 5989631.0 m) and extending in a southerly direction following the western kerbline for 5 m.</i>
Evans Bay Parade	<i>No Stopping, at all times</i>	<i>West side, commencing 848.5 m south of its intersection with Oriental Parade (Grid coordinates X = 2661053.3 m, Y = 5989631.0 m) and extending in a southerly direction following the western kerbline for 9.5 m.</i>
Evans Bay Parade	<i>No Stopping, at all times</i>	<i>West side, commencing 870.5 m south of its intersection with Oriental Parade (Grid coordinates X = 2661053.3 m, Y = 5989631.0 m) and extending in a southerly direction following the western kerbline for 53 m.</i>
Evans Bay Parade	<i>No Stopping, at all times</i>	<i>West side, commencing at its intersection with Maida Vale Road (Grid coordinates X = 2661017.7 m, Y = 5988818.6 m) and extending in a southerly direction following the western kerbline for 47.5 m.</i>
Evans Bay Parade	<i>No Stopping, at all times</i>	<i>West side, commencing 116.5 m south of its intersection with Maida Vale Road (Grid coordinates X = 2661017.7 m, Y = 5988818.6 m) and extending in a southerly direction following the western kerbline for 5 m.</i>

PROPOSED TRAFFIC RESOLUTION

Absolutely Positively
Wellington City Council

Me Heke Ki Pōneke

Evans Bay Parade	<i>No Stopping, at all times</i>	<i>West side, commencing 137 m south of its intersection with Maida Vale Road (Grid coordinates X = 2661017.7 m, Y = 5988818.6 m) and extending in a southerly direction following the western kerbline for 253 m.</i>
Evans Bay Parade	<i>No Stopping, at all times</i>	<i>West side, commencing 537 m south of its intersection with Maida Vale Road (Grid coordinates X = 2661017.7 m, Y = 5988818.6 m) and extending in a southerly direction following the western kerbline for 5.5 m.</i>
Evans Bay Parade	<i>No Stopping, at all times</i>	<i>West side, commencing 557.5 m south of its intersection with Maida Vale Road (Grid coordinates X = 2661017.7 m, Y = 5988818.6 m) and extending in a southerly direction following the western kerbline for 15.5 m.</i>
Evans Bay Parade	<i>No Stopping, at all times</i>	<i>West side, commencing 576.5 m south of its intersection with Maida Vale Road (Grid coordinates X = 2661017.7 m, Y = 5988818.6 m) and extending in a southerly direction following the western kerbline for 505.5 m.</i>

Add to Schedule H (Pedestrian Crossings) of the Traffic Restrictions Schedule

Column One	Column Two	Column Three
Evans Bay Parade	<i>Pedestrian crossing</i>	<i>East side, commencing 811 m south of its intersection with Oriental Parade (Grid coordinates X = 2661054.4 m, Y = 5989641.3 m) and extending in a southerly direction following the eastern kerbline for 3.5 m.</i>
Evans Bay Parade	<i>Pedestrian crossing</i>	<i>East side, commencing 1525.5 m south of its intersection with Evans Bay Parade (Grid coordinates X = 2661054.4 m, Y = 5989641.3 m) and extending in a southerly direction following the eastern kerbline for 3.5 m.</i>

PROPOSED TRAFFIC RESOLUTION

Absolutely Positively
Wellington City Council

Me Heke Ki Pōneke

Evans Bay Parade	<i>Pedestrian crossing</i>	<i>West side, commencing 796.5 m south of its intersection with Oriental Parade (Grid coordinates X = 2661053.3 m, Y = 5989631.0 m) and extending in a southerly direction following the western kerblines for 3.5 m.</i>
Evans Bay Parade	<i>Pedestrian crossing</i>	<i>West side, commencing 573 m south of its intersection with Maida Vale Road (Grid coordinates X = 2661017.7 m, Y = 5988818.6 m) and extending in a southerly direction following the western kerblines for 3.5 m.</i>

Prepared By: Ryan Dunn (Tonkin + Taylor Senior Transport Engineer)

Approved By: Paul Barker (Planning Manager, Network Improvements)

Date: 13 November 2017

WCC Contact:

Daniel Cairncross
Principal Transport Engineer
Transport Network Team
Wellington City Council
101 Wakefield Street / PO Box 2199,
Wellington 6140
Phone: 027 803 0340
Email: Daniel.Cairncross@wcc.govt.nz

Appendix A: Route Plan



PROPOSED LOCATION PLAN

EVANS BAY PARADE CYCLEWAY

0 100 300m

studiopacificarchitecture

SK-17

rev.D

08-11-17

Appendix B: Artist Impressions

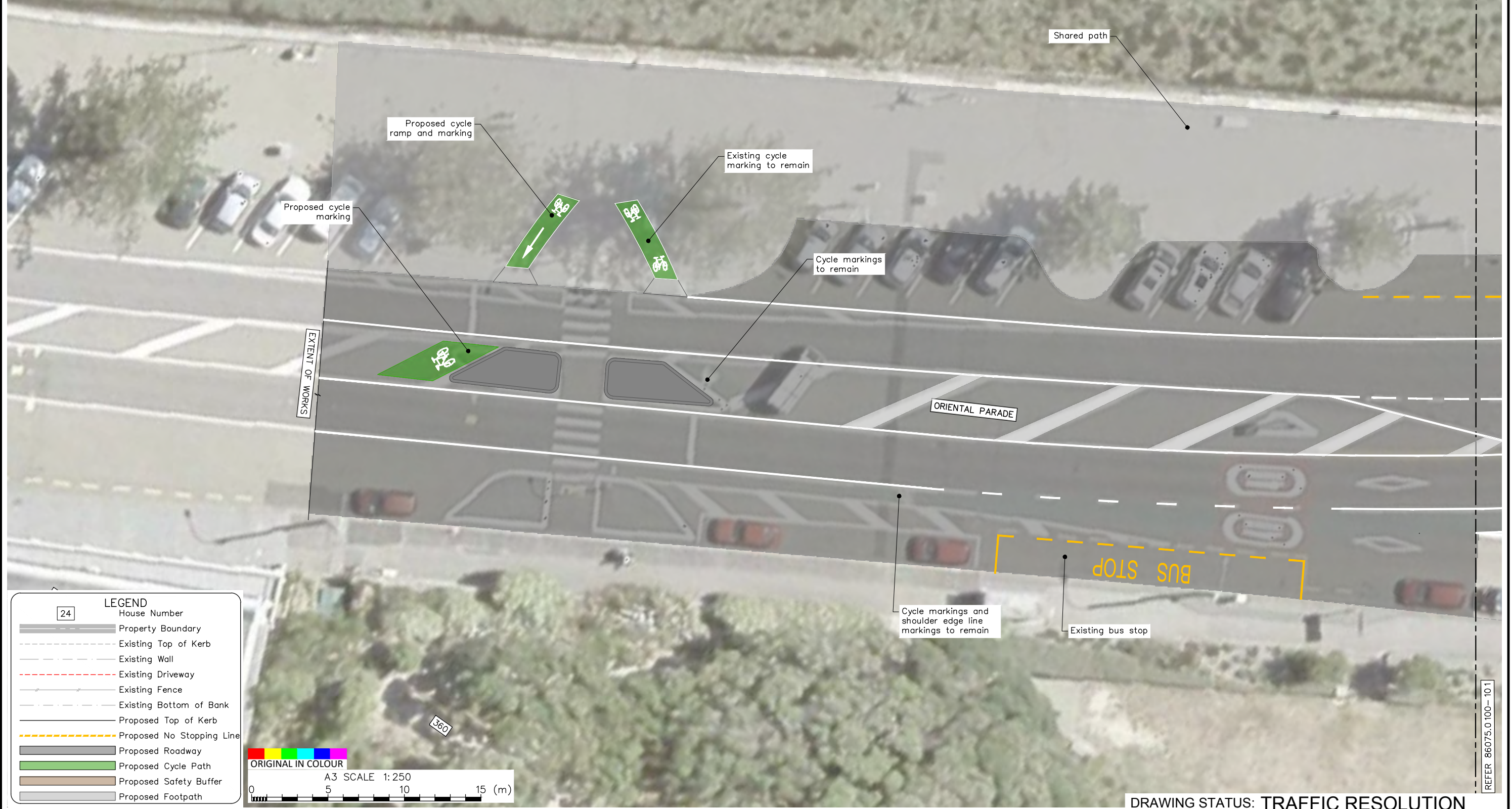
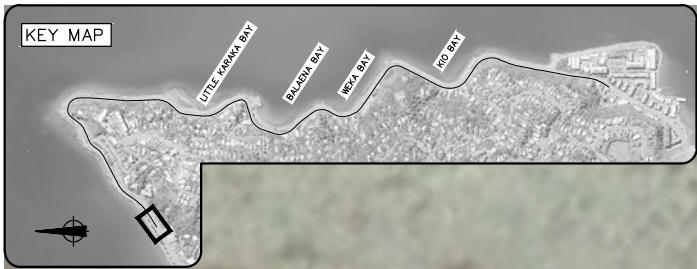


Figure 1: Artist Impression — Oriental Bay

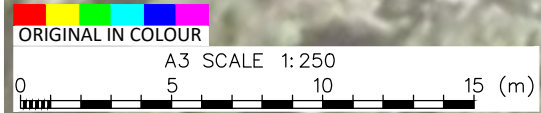


Figure 2: Artist Impression — Weka Bay

Appendix C: Traffic Resolution Plans



LEGEND	
[24]	House Number
[Solid Grey Line]	Property Boundary
[Dashed Grey Line]	Existing Top of Kerb
[Dashed Grey Line]	Existing Wall
[Dashed Red Line]	Existing Driveway
[Dashed Grey Line]	Existing Fence
[Dashed Grey Line]	Existing Bottom of Bank
[Dashed Grey Line]	Proposed Top of Kerb
[Dashed Yellow Line]	Proposed No Stopping Line
[Solid Grey Area]	Proposed Roadway
[Solid Green Area]	Proposed Cycle Path
[Solid Brown Area]	Proposed Safety Buffer
[Solid Grey Area]	Proposed Footpath



REFER 86075.0 100-101

DRAWING STATUS: TRAFFIC RESOLUTION

REVISION DESCRIPTION	BY	DATE
1 Traffic Resolution Issue		
0 80% Traffic Resolution Issue	RWD	Oct. 17

DESIGNED :	JASZ	Nov. 17
DRAWN :	AGDS	Nov. 17
DESIGN CHECKED :	BS	Nov 17
DRAFTING CHECKED :	NSD	Nov 17
CADFILE :	\\86075.0 100-100_125.dwg	
APPROVED :	NOT FOR CONSTRUCTION	
This drawing is not to be used for construction purposes unless signed as approved		
REFERENCE :		

Tonkin+Taylor
 Level 4, 2 Hunter St, Wellington
 Tel. (04) 381 8560 Fax. (09) 307 0265
 www.tonkintaylor.co.nz

CLIENT, PROJECT	
WELLINGTON CITY COUNCIL	
URBAN CYCLEWAYS PROGRAMME: EVANS BAY	
TITLE	
ORIENTAL PARADE	
Traffic Resolution (Sheet 1 of 28)	
SCALES (AT A3 SIZE)	DWG. No.
1:250	86075.0 100-100
REV.	
1	



REFER 86075.0 100-100

REFER 86075.0 100-102

KEY MAP

A3 SCALE 1:250

DRAWING STATUS: TRAFFIC RESOLUTION

DESIGNED :	JASZ	Nov. 17
DRAWN :	AGDS	Nov. 17
DESIGN CHECKED :	BS	Nov 17
DRAFTING CHECKED :	NSD	Nov 17
CADFILE :	\\86075.0 100-100_125.dwg	
APPROVED :	NOT FOR CONSTRUCTION	
This drawing is not to be used for construction purposes unless signed as approved		
REVISION DESCRIPTION	BY	DATE
1 Traffic Resolution Issue		
0 80% Traffic Resolution Issue	RWD	Oct. 17

NOTES :

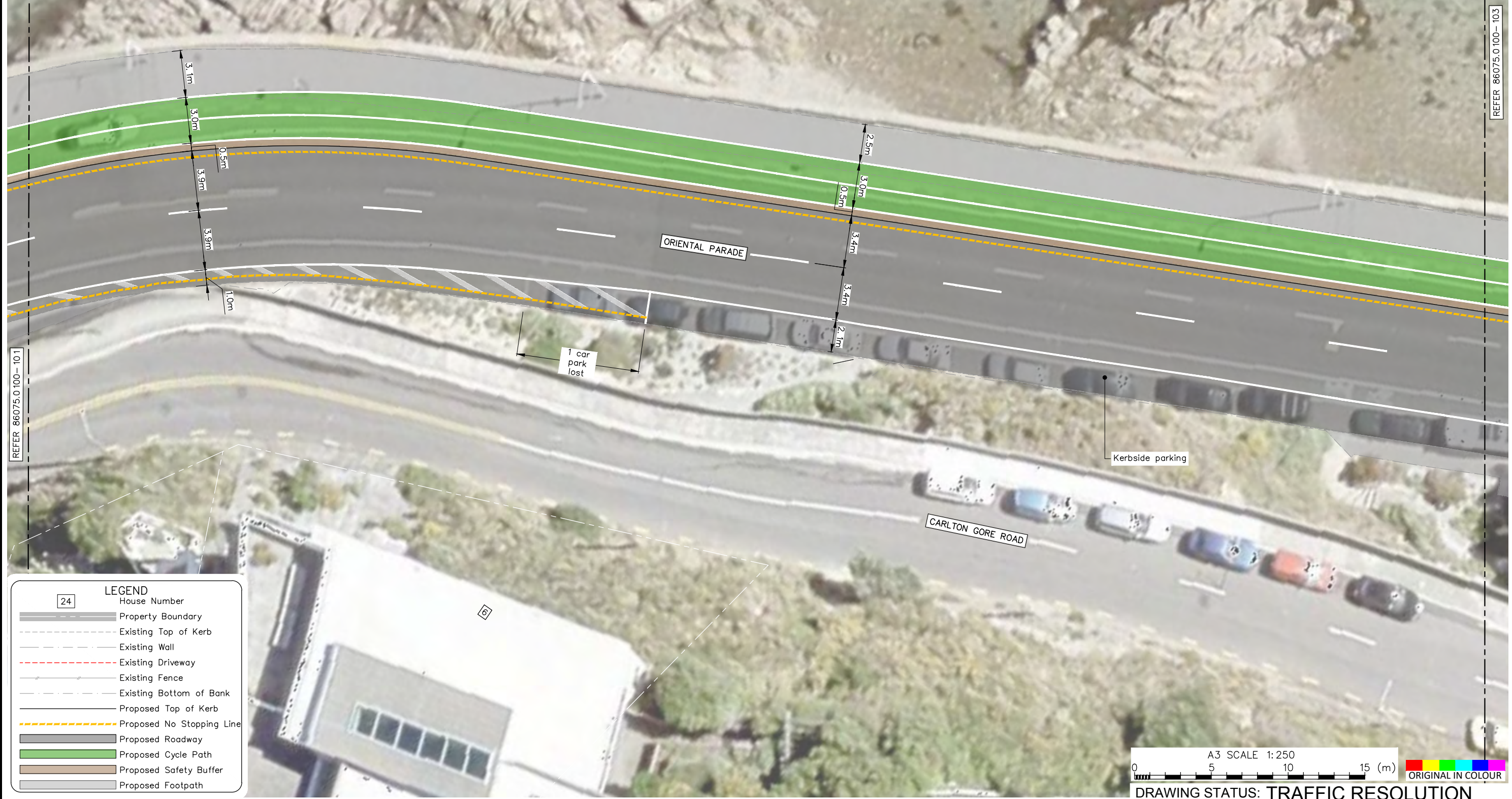
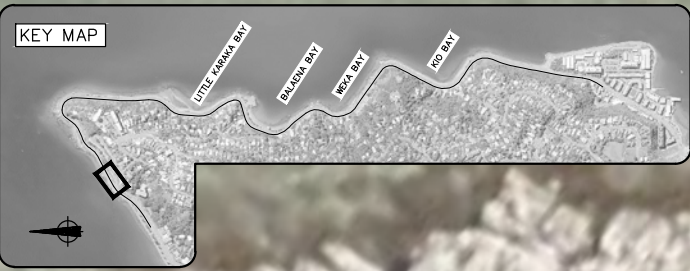
- All dimensions are in metres unless noted otherwise.
- Design layout and cycle path colour are for the purposes of consultation and are indicative only.
- Survey supplied by Cardno (NZ) Limited. Ref. data: "NZ0117147-SU-3000.dwg". Rev. 1 dated 07/10/2017.
- Aerial photo sourced from Cardno (NZ) Limited. Flown in October 2017. Ref. data: "NZ0117147_WCC_Urban_2017_WGTN2000.jpg". Coordinate Datum: NZGD2000, Wellington Circuit Coordinates. Origin: 41 18 04S 174 46 35E 800,000mN 400,000mE

REFERENCE :

Tonkin+Taylor

Level 4, 2 Hunter St, Wellington
 Tel. (04) 381 8560 Fax. (09) 307 0265
 www.tonkintaylor.co.nz

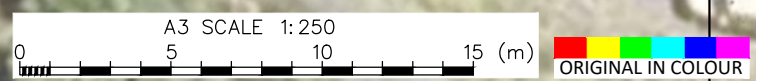
CLIENT, PROJECT		
WELLINGTON CITY COUNCIL		
URBAN CYCLEWAYS PROGRAMME: EVANS BAY		
TITLE		
ORIENTAL PARADE		
Traffic Resolution (Sheet 2 of 28)		
SCALES (AT A3 SIZE)	DWG. No.	REV.
1:250	86075.0 100-101	1



REFER 86075.0100-101

REFER 86075.0100-103

LEGEND	
24	House Number
	Property Boundary
	Existing Top of Kerb
	Existing Wall
	Existing Driveway
	Existing Fence
	Existing Bottom of Bank
	Proposed Top of Kerb
	Proposed No Stopping Line
	Proposed Roadway
	Proposed Cycle Path
	Proposed Safety Buffer
	Proposed Footpath



DRAWING STATUS: TRAFFIC RESOLUTION

REVISION DESCRIPTION	BY	DATE
1 Traffic Resolution Issue		
0 80% Traffic Resolution Issue	RWD	Oct.17

DESIGNED :	JASZ	Nov.17
DRAWN :	AGDS	Nov.17
DESIGN CHECKED :	BS	Nov.17
DRAFTING CHECKED :	NSD	Nov.17
CADFILE :	\\86075.0100-100_125.dwg	
APPROVED :	NOT FOR CONSTRUCTION	
This drawing is not to be used for construction purposes unless signed as approved		

NOTES :

- All dimensions are in metres unless noted otherwise.
- Design layout and cycle path colour are for the purposes of consultation and are indicative only.
- Survey supplied by Cardno (NZ) Limited. Ref. data: "NZ0117147-SU-3000.dwg". Rev.1 dated 07/10/2017.
- Aerial photo sourced from Cardno (NZ) Limited. Flown in October 2017. Ref. data: "NZ0117147_WCC_Urban_2017_WGTN2000.jpg".
- Coordinate Datum: NZGD2000, Wellington Circuit Coordinates. Origin: 41 18 04S 174 46 35E 800,000mN 400,000mE

REFERENCE :

Tonkin+Taylor
 Level 4, 2 Hunter St, Wellington
 Tel. (04) 381 8560 Fax. (09) 307 0265
 www.tonkintaylor.co.nz

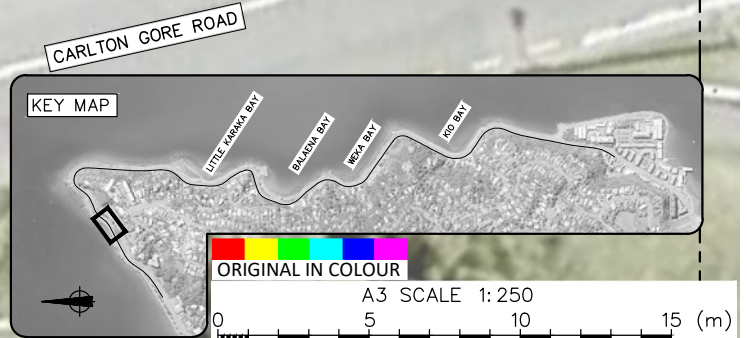
CLIENT, PROJECT	WELLINGTON CITY COUNCIL
URBAN CYCLEWAYS PROGRAMME: EVANS BAY	
TITLE	ORIENTAL PARADE
	Traffic Resolution (Sheet 3 of 28)
SCALES (AT A3 SIZE)	1:250
DWG. No.	86075.0100-102
REV.	1

REFER 86075.0 100-102



REFER 86075.0 100-104

LEGEND	
[24]	House Number
[Grey line]	Property Boundary
[Dashed line]	Existing Top of Kerb
[Solid line]	Existing Wall
[Red dashed line]	Existing Driveway
[Dotted line]	Existing Fence
[Dashed line]	Existing Bottom of Bank
[Solid line]	Proposed Top of Kerb
[Yellow dashed line]	Proposed No Stopping Line
[Grey area]	Proposed Roadway
[Green area]	Proposed Cycle Path
[Brown area]	Proposed Safety Buffer
[Light grey area]	Proposed Footpath



DRAWING STATUS: TRAFFIC RESOLUTION

REVISION DESCRIPTION	BY	DATE
1 Traffic Resolution Issue		
0 80% Traffic Resolution Issue	RWD	Oct. 17

DESIGNED : JASZ Nov. 17
 DRAWN : AGDS Nov. 17
 DESIGN CHECKED : BS Nov 17
 DRAFTING CHECKED : NSD Nov 17
 CADFILE : \\86075.0 100-100_125.dwg
 APPROVED :
NOT FOR CONSTRUCTION
 This drawing is not to be used for construction purposes unless signed as approved
 COPYRIGHT ON THIS DRAWING IS RESERVED

NOTES :
 1. All dimensions are in metres unless noted otherwise.
 2. Design layout and cycle path colour are for the purposes of consultation and are indicative only.
 3. Survey supplied by Cardno (NZ) Limited. Ref. data: "NZ0117147-SU-3000.dwg". Rev. 1 dated 07/10/2017.
 4. Aerial photo sourced from Cardno (NZ) Limited. Flown in October 2017. Ref. data: "NZ0117147_WCC_Urban_2017_WGTN2000.jpg".
 5. Coordinate Datum: NZGD2000, Wellington Circuit Coordinates.
 Origin: 41 18 04S 174 46 35E 800,000mN 400,000mE

REFERENCE :

Tonkin+Taylor
 Level 4, 2 Hunter St, Wellington
 Tel. (04) 381 8560 Fax. (09) 307 0265
 www.tonkintaylor.co.nz

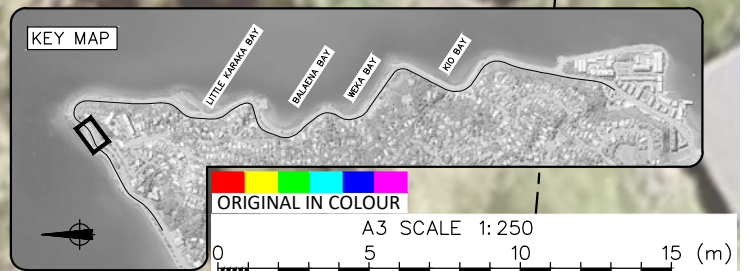
CLIENT, PROJECT		WELLINGTON CITY COUNCIL	
		URBAN CYCLEWAYS PROGRAMME: EVANS BAY	
TITLE		ORIENTAL PARADE	
		Traffic Resolution (Sheet 4 of 28)	
SCALES (AT A3 SIZE)	DWG. No.	REV.	
1:250	86075.0 100-103	1	

REFER 86075.0100-105



REFER 86075.0100-103

LEGEND	
24	House Number
	Property Boundary
	Existing Top of Kerb
	Existing Wall
	Existing Driveway
	Existing Fence
	Existing Bottom of Bank
	Proposed Top of Kerb
	Proposed No Stopping Line
	Proposed Roadway
	Proposed Cycle Path
	Proposed Safety Buffer
	Proposed Footpath



REVISION DESCRIPTION	BY	DATE
1 Traffic Resolution Issue		
0 80% Traffic Resolution Issue	RWD	Oct.17

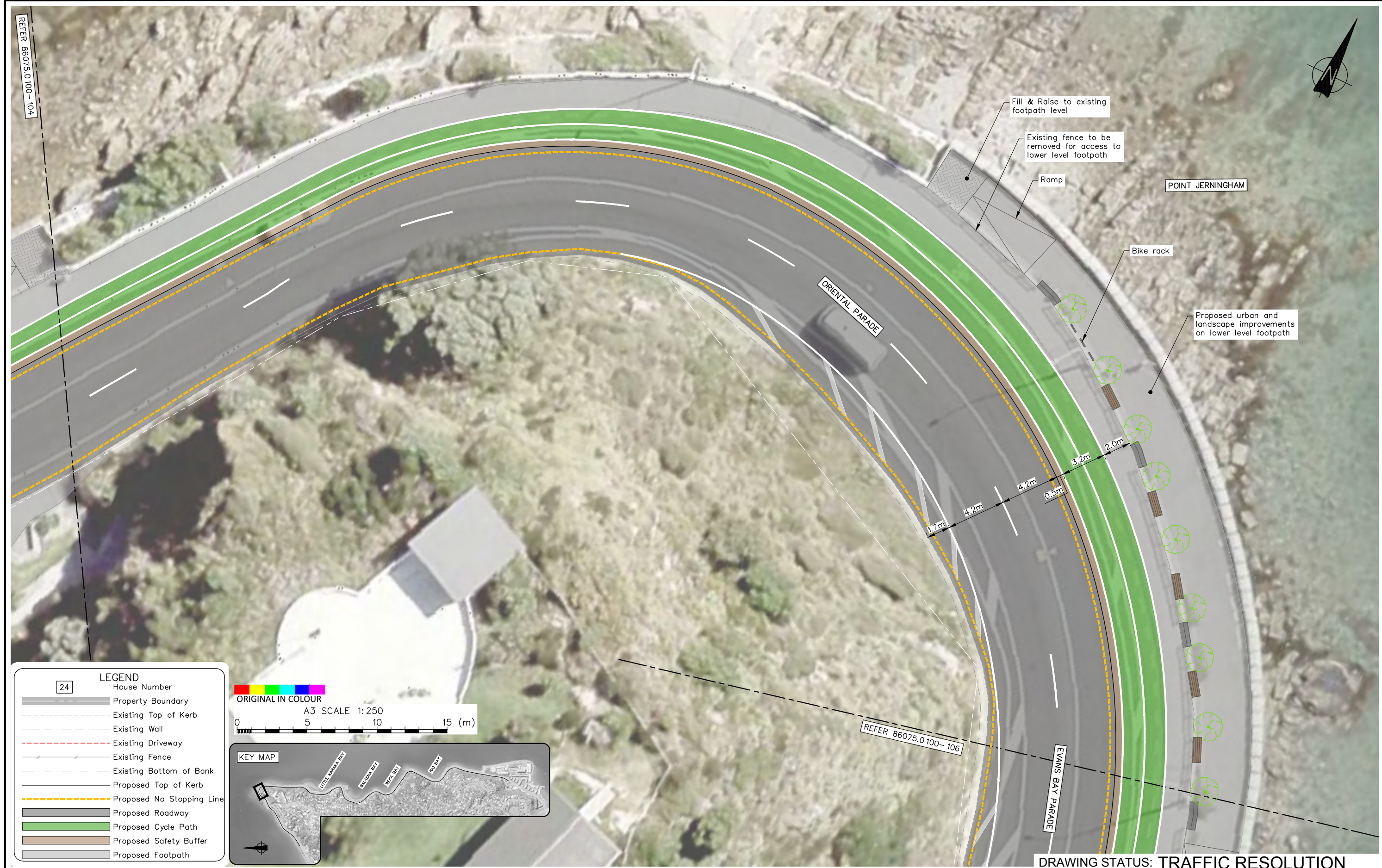
DESIGNED : JASZ Nov.17
 DRAWN : AGDS Nov.17
 DESIGN CHECKED : BS Nov.17
 DRAFTING CHECKED : NSD Nov.17
 CADFILE : \\86075.0100-100_125.dwg
 APPROVED : **NOT FOR CONSTRUCTION**
 This drawing is not to be used for construction purposes unless signed as approved
 COPYRIGHT ON THIS DRAWING IS RESERVED

NOTES :
 1. All dimensions are in metres unless noted otherwise.
 2. Design layout and cycle path colour are for the purposes of consultation and are indicative only.
 3. Survey supplied by Cardno (NZ) Limited. Ref. data: "NZ0117147-SU-3000.dwg". Rev.1 dated 07/10/2017.
 4. Aerial photo sourced from Cardno (NZ) Limited. Flown in October 2017. Ref. data: "NZ0117147_WCC_Urban_2017_WGTN2000.jpg".
 5. Coordinate Datum: NZGD2000, Wellington Circuit Coordinates.
 Origin: 41 18 04S 174 46 35E 800,000mN 400,000mE

Tonkin+Taylor
 Level 4, 2 Hunter St, Wellington
 Tel. (04) 381 8560 Fax. (09) 307 0265
 www.tonkintaylor.co.nz

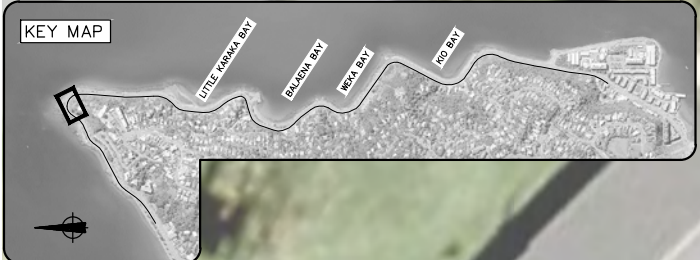
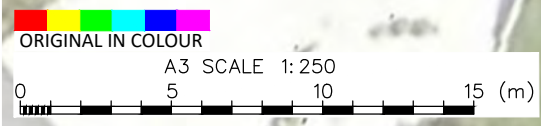
CLIENT, PROJECT		WELLINGTON CITY COUNCIL	
		URBAN CYCLEWAYS PROGRAMME: EVANS BAY	
TITLE		ORIENTAL PARADE	
		Traffic Resolution (Sheet 5 of 28)	
SCALES (AT A3 SIZE)	DWG. No.	REV.	
1:250	86075.0100-104	1	

REFER 86075.0100-104



LEGEND

24	House Number
[Grey line]	Property Boundary
[Dashed line]	Existing Top of Kerb
[Dotted line]	Existing Wall
[Red dashed line]	Existing Driveway
[Grey line with dots]	Existing Fence
[Dashed line]	Existing Bottom of Bank
[Dashed line]	Proposed Top of Kerb
[Yellow dashed line]	Proposed No Stopping Line
[Grey area]	Proposed Roadway
[Green area]	Proposed Cycle Path
[Brown area]	Proposed Safety Buffer
[Light grey area]	Proposed Footpath



DRAWING STATUS: TRAFFIC RESOLUTION

DESIGNED :	JASZ	Nov.17
DRAWN :	AGDS	Nov.17
DESIGN CHECKED :	BS	Nov.17
DRAFTING CHECKED :	NSD	Nov.17
CADFILE :	\\86075.0100-100_125.dwg	
APPROVED :	NOT FOR CONSTRUCTION	
This drawing is not to be used for construction purposes unless signed as approved		
REVISION DESCRIPTION	BY	DATE
1 Traffic Resolution Issue		
0 80% Traffic Resolution Issue	RWD	Oct.17

DESIGNED : JASZ Nov.17
 DRAWN : AGDS Nov.17
 DESIGN CHECKED : BS Nov.17
 DRAFTING CHECKED : NSD Nov.17
 CADFILE : \\86075.0100-100_125.dwg
 APPROVED : **NOT FOR CONSTRUCTION**
 This drawing is not to be used for construction purposes unless signed as approved

NOTES :

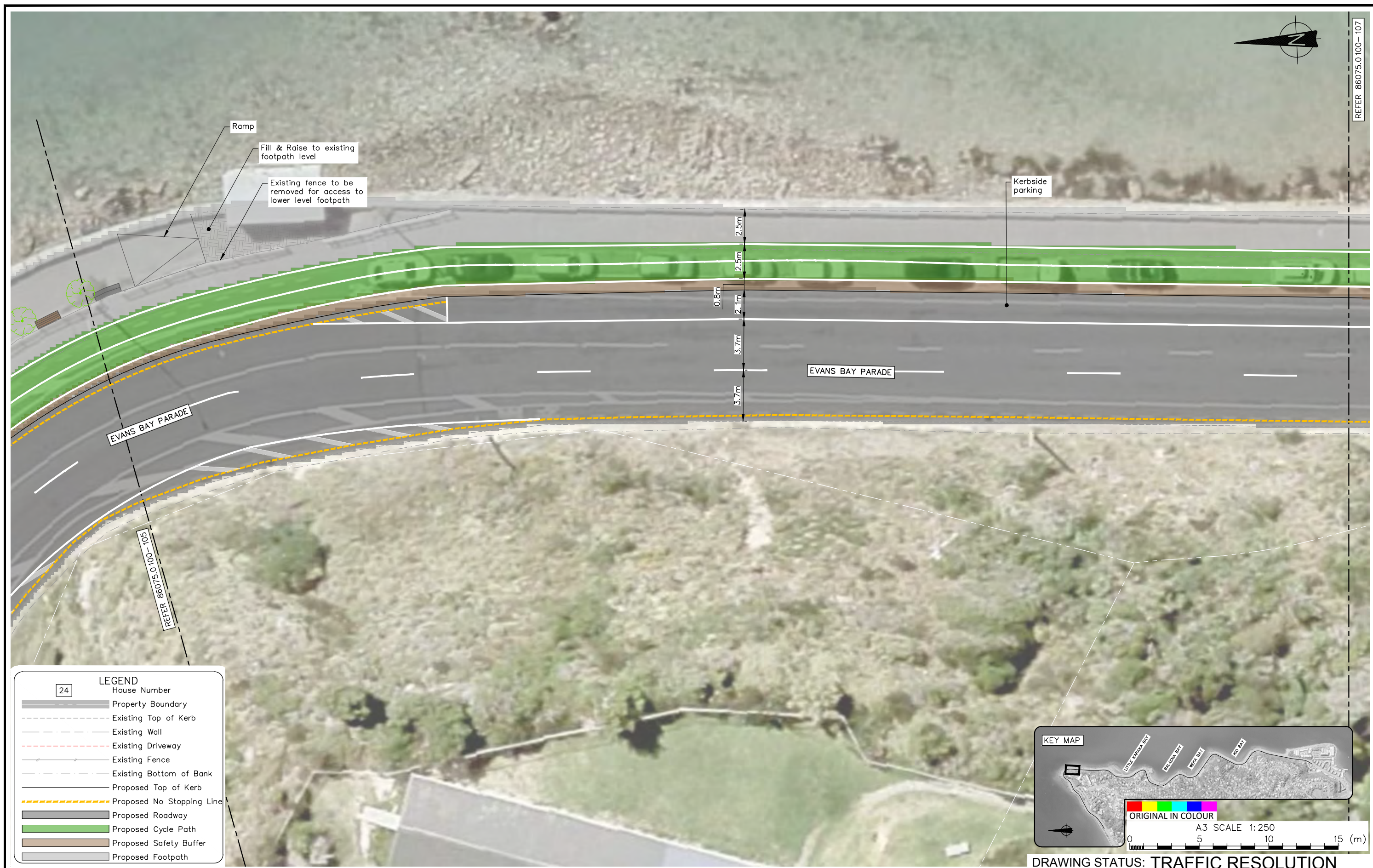
- All dimensions are in metres unless noted otherwise.
- Design layout and cycle path colour are for the purposes of consultation and are indicative only.
- Survey supplied by Cardno (NZ) Limited. Ref. data: "NZ0117147-SU-3000.dwg". Rev. 1 dated 07/10/2017.
- Aerial photo sourced from Cardno (NZ) Limited. Flown in October 2017. Ref. data: "NZ0117147_WCC_Urban_2017_WGTN2000.jpg".
- Coordinate Datum: NZGD2000, Wellington Circuit Coordinates. Origin: 41 18 04S 174 46 35E 800,000mN 400,000mE

REFERENCE :

Tonkin+Taylor
 Level 4, 2 Hunter St, Wellington
 Tel. (04) 381 8560 Fax. (09) 307 0265
 www.tonkintaylor.co.nz

CLIENT, PROJECT	WELLINGTON CITY COUNCIL
URBAN CYCLEWAYS PROGRAMME:	EVANS BAY
TITLE	ORIENTAL PARADE & EVANS BAY PARADE
	Traffic Resolution (Sheet 6 of 28)
SCALES (AT A3 SIZE)	1:250
DWG. No.	86075.0100-105
REV.	1

P:\86075\86075.0100 Evans Bay\WorkingMaterial\CAD\DWG\86075.0100-100_125.dwg, 105, 9/11/2017 4:00:20 PM, jasz

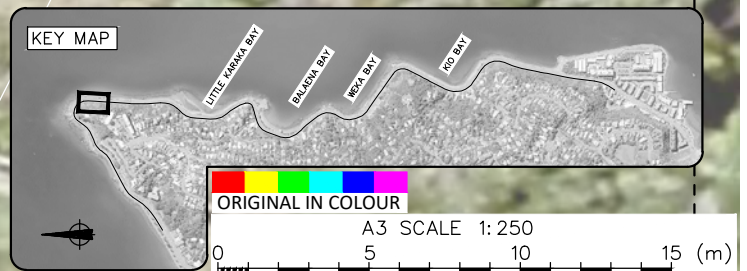


EVANS BAY PARADE

EVANS BAY PARADE

REFER 86075.0100-105

LEGEND	
24	House Number
	Property Boundary
	Existing Top of Kerb
	Existing Wall
	Existing Driveway
	Existing Fence
	Existing Bottom of Bank
	Proposed Top of Kerb
	Proposed No Stopping Line
	Proposed Roadway
	Proposed Cycle Path
	Proposed Safety Buffer
	Proposed Footpath



DRAWING STATUS: TRAFFIC RESOLUTION

REVISION DESCRIPTION	BY	DATE
1 Traffic Resolution Issue		
0 80% Traffic Resolution Issue	RWD	Oct.17

DESIGNED :	JASZ	Nov.17
DRAWN :	AGDS	Nov.17
DESIGN CHECKED :	BS	Nov.17
DRAFTING CHECKED :	NSD	Nov.17
CADFILE :	\\86075.0100-100_125.dwg	
APPROVED :	NOT FOR CONSTRUCTION	
This drawing is not to be used for construction purposes unless signed as approved		
REFERENCE :		

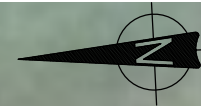
Tonkin+Taylor

Level 4, 2 Hunter St, Wellington
 Tel. (04) 381 8560 Fax. (09) 307 0265
 www.tonkintaylor.co.nz

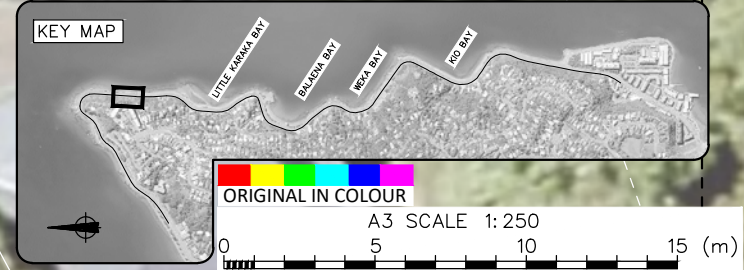
CLIENT, PROJECT	WELLINGTON CITY COUNCIL
URBAN CYCLEWAYS PROGRAMME:	EVANS BAY
TITLE	EVANS BAY PARADE
	Traffic Resolution (Sheet 7 of 28)
SCALES (AT A3 SIZE)	1:250
DWG. No.	86075.0100-106
REV.	1

REFER 86075.0100-106

REFER 86075.0100-108



LEGEND	
24	House Number
	Property Boundary
	Existing Top of Kerb
	Existing Wall
	Existing Driveway
	Existing Fence
	Existing Bottom of Bank
	Proposed Top of Kerb
	Proposed No Stopping Line
	Proposed Roadway
	Proposed Cycle Path
	Proposed Safety Buffer
	Proposed Footpath



DRAWING STATUS: TRAFFIC RESOLUTION

REVISION DESCRIPTION	BY	DATE
1 Traffic Resolution Issue		
0 80% Traffic Resolution Issue	RWD	Oct.17

DESIGNED :	JASZ	Nov.17
DRAWN :	AGDS	Nov.17
DESIGN CHECKED :	BS	Nov.17
DRAFTING CHECKED :	NSD	Nov.17
CADFILE :	\\86075.0100-100_125.dwg	
APPROVED :	NOT FOR CONSTRUCTION	
This drawing is not to be used for construction purposes unless signed as approved		
COPYRIGHT ON THIS DRAWING IS RESERVED		

NOTES :

- All dimensions are in metres unless noted otherwise.
- Design layout and cycle path colour are for the purposes of consultation and are indicative only.
- Survey supplied by Cardno (NZ) Limited. Ref. data: "NZ0117147-SU-3000.dwg". Rev. 1 dated 07/10/2017.
- Aerial photo sourced from Cardno (NZ) Limited. Flown in October 2017. Ref. data: "NZ0117147_WCC_Urban_2017_WGTN2000.jpg".
- Coordinate Datum: NZGD2000, Wellington Circuit Coordinates. Origin: 41 18 04S 174 46 35E 800,000mN 400,000mE

T+T Tonkin+Taylor

Level 4, 2 Hunter St, Wellington
 Tel. (04) 381 8560 Fax. (09) 307 0265
 www.tonkintaylor.co.nz

CLIENT, PROJECT	WELLINGTON CITY COUNCIL
URBAN CYCLEWAYS PROGRAMME:	EVANS BAY
TITLE	EVANS BAY PARADE
	Traffic Resolution (Sheet 8 of 28)
SCALES (AT A3 SIZE)	1: 250
DWG. No.	86075.0100-107
REV.	1

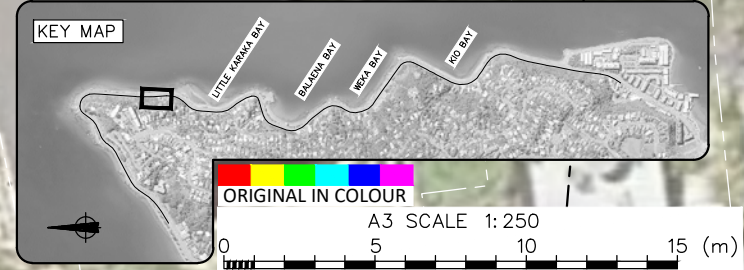
P:\86075\86075.0100 Evans Bay\WorkingMaterial\CAD\DWG\86075.0100-100_125.dwg, 107, 9/11/2017 4:01:21 PM, jasz

REFER 86075.0 100-107



REFER 86075.0 100-109

LEGEND	
24	House Number
	Property Boundary
	Existing Top of Kerb
	Existing Wall
	Existing Driveway
	Existing Fence
	Existing Bottom of Bank
	Proposed Top of Kerb
	Proposed No Stopping Line
	Proposed Roadway
	Proposed Cycle Path
	Proposed Safety Buffer
	Proposed Footpath



DRAWING STATUS: TRAFFIC RESOLUTION

REVISION DESCRIPTION	BY	DATE
1 Traffic Resolution Issue		
0 80% Traffic Resolution Issue	RWD	Oct. 17

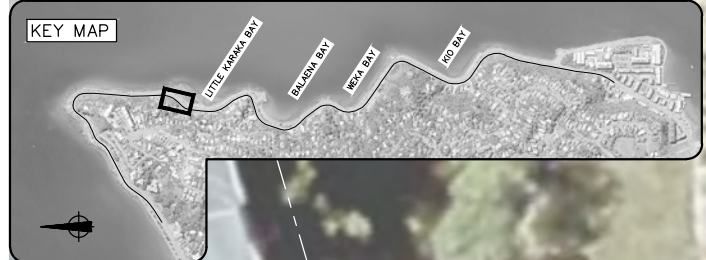
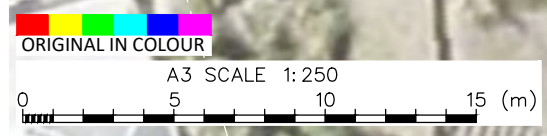
DESIGNED :	JASZ	Nov. 17
DRAWN :	AGDS	Nov. 17
DESIGN CHECKED :	BS	Nov 17
DRAFTING CHECKED :	NSD	Nov 17
CADFILE :	\\86075.0 100-100_125.dwg	
APPROVED :	NOT FOR CONSTRUCTION	
This drawing is not to be used for construction purposes unless signed as approved		
NOTES :	1. All dimensions are in metres unless noted otherwise. 2. Design layout and cycle path colour are for the purposes of consultation and are indicative only. 3. Survey supplied by Cardno (NZ) Limited. Ref. data: "NZ0117147-SU-3000.dwg". Rev. 1 dated 07/10/2017. 4. Aerial photo sourced from Cardno (NZ) Limited. Flown in October 2017. Ref. data: "NZ0117147_WCC_Urban_2017_WGTN2000.jpg". 5. Coordinate Datum: NZGD2000, Wellington Circuit Coordinates. Origin: 41 18 04S 174 46 35E 800,000mN 400,000mE	
REFERENCE :		

Tonkin+Taylor
 Level 4, 2 Hunter St, Wellington
 Tel. (04) 381 8560 Fax. (09) 307 0265
 www.tonkintaylor.co.nz

CLIENT, PROJECT	WELLINGTON CITY COUNCIL	
URBAN CYCLEWAYS PROGRAMME:	EVANS BAY	
TITLE	EVANS BAY PARADE	
	Traffic Resolution (Sheet 9 of 28)	
SCALES (AT A3 SIZE)	DWG. No.	REV.
1: 250	86075.0 100-108	1



LEGEND	
24	House Number
	Property Boundary
	Existing Top of Kerb
	Existing Wall
	Existing Driveway
	Existing Fence
	Existing Bottom of Bank
	Proposed Top of Kerb
	Proposed No Stopping Line
	Proposed Roadway
	Proposed Cycle Path
	Proposed Safety Buffer
	Proposed Footpath



DRAWING STATUS: TRAFFIC RESOLUTION

REVISION DESCRIPTION	BY	DATE
1 Traffic Resolution Issue		
0 80% Traffic Resolution Issue	RWD	Oct. 17

DESIGNED :	JASZ	Nov. 17
DRAWN :	AGDS	Nov. 17
DESIGN CHECKED :	BS	Nov 17
DRAFTING CHECKED :	NSD	Nov 17
CADFILE :	\\86075.0 100-100_125.dwg	
APPROVED :	NOT FOR CONSTRUCTION	
This drawing is not to be used for construction purposes unless signed as approved		

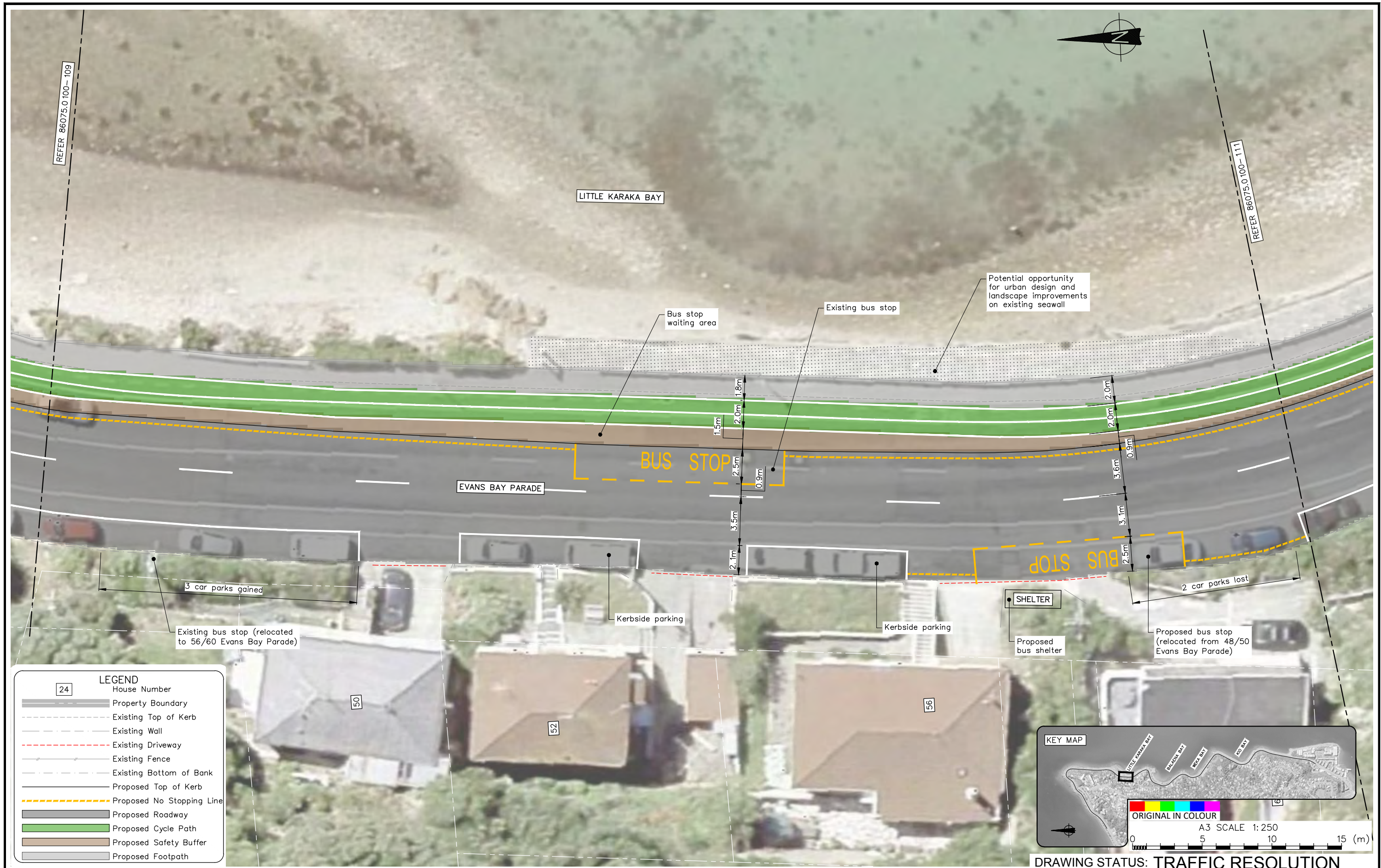
NOTES :

- All dimensions are in metres unless noted otherwise.
- Design layout and cycle path colour are for the purposes of consultation and are indicative only.
- Survey supplied by Cardno (NZ) Limited. Ref. data: "NZ0117147-SU-3000.dwg". Rev. 1 dated 07/10/2017.
- Aerial photo sourced from Cardno (NZ) Limited. Flown in October 2017. Ref. data: "NZ0117147_WCC_Urban_2017_WGTN2000.jpg".
- Coordinate Datum: NZGD2000, Wellington Circuit Coordinates. Origin: 41 18 04S 174 46 35E 800,000mN 400,000mE

REFERENCE :

Tonkin+Taylor
 Level 4, 2 Hunter St, Wellington
 Tel. (04) 381 8560 Fax. (09) 307 0265
 www.tonkintaylor.co.nz

CLIENT, PROJECT		WELLINGTON CITY COUNCIL
URBAN CYCLEWAYS PROGRAMME:		EVANS BAY PARADE
TITLE		Traffic Resolution (Sheet 10 of 28)
SCALES (AT A3 SIZE)	DWG. No.	REV.
1: 250	86075.0 100- 109	1



REFER 86075.0 100-109

REFER 86075.0 100-111

LITTLE KARAKA BAY

EVANS BAY PARADE

BUS STOP

BUS STOP

3 car parks gained

Existing bus stop (relocated to 56/60 Evans Bay Parade)

Kerbside parking

Kerbside parking

SHELTER

Proposed bus shelter

2 car parks lost

Proposed bus stop (relocated from 48/50 Evans Bay Parade)

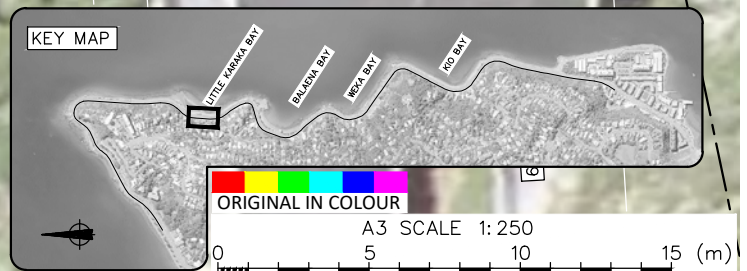
Potential opportunity for urban design and landscape improvements on existing seawall

Bus stop waiting area

Existing bus stop

LEGEND

24	House Number
[Solid Grey Line]	Property Boundary
[Dashed Grey Line]	Existing Top of Kerb
[Dotted Grey Line]	Existing Wall
[Red Dashed Line]	Existing Driveway
[Thin Grey Line]	Existing Fence
[Dashed Grey Line]	Existing Bottom of Bank
[Thin Grey Line]	Proposed Top of Kerb
[Yellow Dashed Line]	Proposed No Stopping Line
[Grey Area]	Proposed Roadway
[Green Area]	Proposed Cycle Path
[Brown Area]	Proposed Safety Buffer
[Light Grey Area]	Proposed Footpath



DRAWING STATUS: TRAFFIC RESOLUTION

DESIGNED :	JASZ	Nov. 17
DRAWN :	AGDS	Nov. 17
DESIGN CHECKED :	BS	Nov 17
DRAFTING CHECKED :	NSD	Nov 17
CADFILE :	\\86075.0 100-100_125.dwg	
APPROVED :	NOT FOR CONSTRUCTION	
This drawing is not to be used for construction purposes unless signed as approved		
REVISION DESCRIPTION	BY	DATE
1 Traffic Resolution Issue		
0 80% Traffic Resolution Issue	RWD	Oct. 17

NOTES :

- All dimensions are in metres unless noted otherwise.
- Design layout and cycle path colour are for the purposes of consultation and are indicative only.
- Survey supplied by Cardno (NZ) Limited. Ref. data: "NZ0117147-SU-3000.dwg". Rev. 1 dated 07/10/2017.
- Aerial photo sourced from Cardno (NZ) Limited. Flown in October 2017. Ref. data: "NZ0117147_WCC_Urban_2017_WGTN2000.jpg".
- Coordinate Datum: NZGD2000, Wellington Circuit Coordinates. Origin: 41 18 04S 174 46 35E 800,000mN 400,000mE

REFERENCE :

Tonkin+Taylor

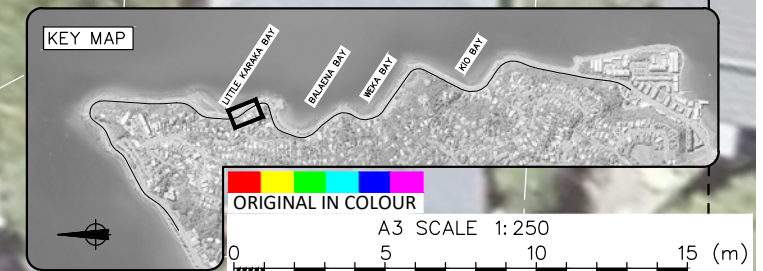
Level 4, 2 Hunter St, Wellington
 Tel. (04) 381 8560 Fax. (09) 307 0265
 www.tonkintaylor.co.nz

CLIENT, PROJECT	WELLINGTON CITY COUNCIL
URBAN CYCLEWAYS PROGRAMME:	EVANS BAY
TITLE	EVANS BAY PARADE
	Traffic Resolution (Sheet 11 of 28)
SCALES (AT A3 SIZE)	1:250
DWG. No.	86075.0 100-110
REV.	1

P:\86075\86075.0100 Evans Bay\WorkingMaterial\CAD\DWG\86075.0100-100_125.dwg, 110, 9/11/2017 4:04:13 PM, jas



LEGEND	
24	House Number
	Property Boundary
	Existing Top of Kerb
	Existing Wall
	Existing Driveway
	Existing Fence
	Existing Bottom of Bank
	Proposed Top of Kerb
	Proposed No Stopping Line
	Proposed Roadway
	Proposed Cycle Path
	Proposed Safety Buffer
	Proposed Footpath



DRAWING STATUS: TRAFFIC RESOLUTION

REVISION DESCRIPTION	BY	DATE
1 Traffic Resolution Issue		
0 80% Traffic Resolution Issue	RWD	Oct.17

DESIGNED :	JASZ	Nov.17
DRAWN :	AGDS	Nov.17
DESIGN CHECKED :	BS	Nov.17
DRAFTING CHECKED :	NSD	Nov.17
CADFILE :	\\86075.0100-100_125.dwg	
APPROVED :	NOT FOR CONSTRUCTION	
This drawing is not to be used for construction purposes unless signed as approved		

NOTES :

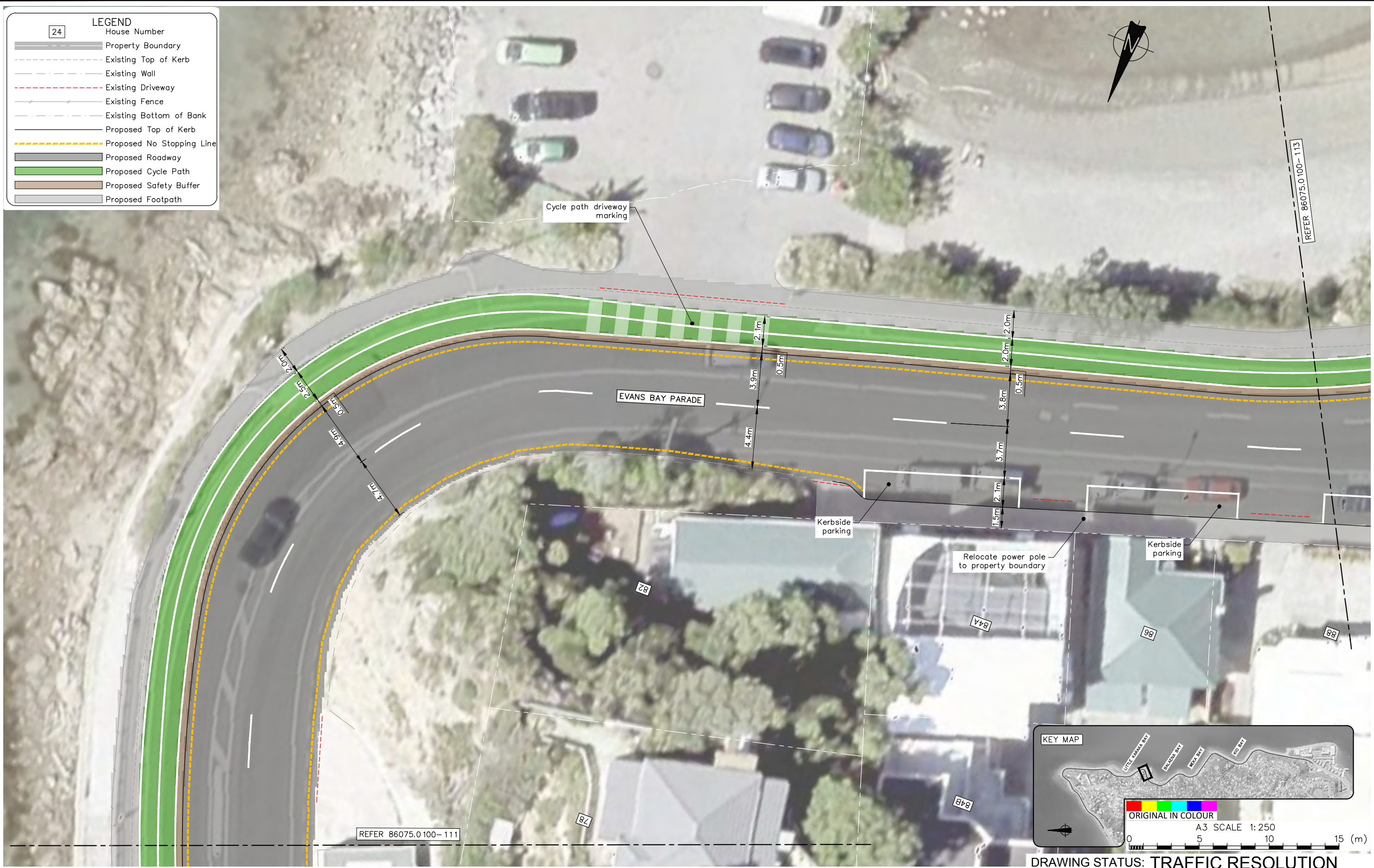
- All dimensions are in metres unless noted otherwise.
- Design layout and cycle path colour are for the purposes of consultation and are indicative only.
- Survey supplied by Cardno (NZ) Limited. Ref. data: "NZ0117147-SU-3000.dwg". Rev. 1 dated 07/10/2017.
- Aerial photo sourced from Cardno (NZ) Limited. Flown in October 2017. Ref. data: "NZ0117147_WCC_Urban_2017_WGTN2000.jpg".
- Coordinate Datum: NZGD2000, Wellington Circuit Coordinates. Origin: 41 18 04S 174 46 35E 800,000mN 400,000mE

REFERENCE :

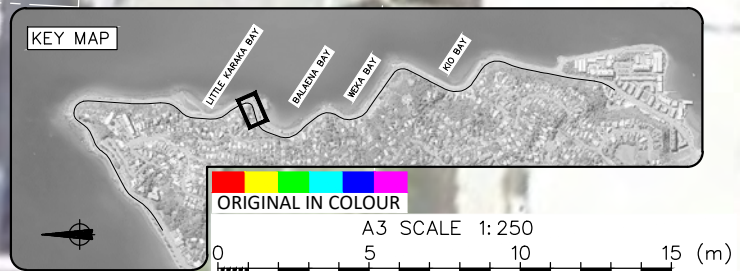
Tonkin+Taylor

Level 4, 2 Hunter St, Wellington
 Tel. (04) 381 8560 Fax. (09) 307 0265
 www.tonkintaylor.co.nz

CLIENT, PROJECT	WELLINGTON CITY COUNCIL
URBAN CYCLEWAYS PROGRAMME:	EVANS BAY PARADE
TITLE	EVANS BAY PARADE
	Traffic Resolution (Sheet 12 of 28)
SCALES (AT A3 SIZE)	1:250
DWG. No.	86075.0100-111
REV.	1



LEGEND	
24	House Number
	Property Boundary
	Existing Top of Kerb
	Existing Wall
	Existing Driveway
	Existing Fence
	Existing Bottom of Bank
	Proposed Top of Kerb
	Proposed No Stopping Line
	Proposed Roadway
	Proposed Cycle Path
	Proposed Safety Buffer
	Proposed Footpath



DRAWING STATUS: TRAFFIC RESOLUTION

REVISION DESCRIPTION	BY	DATE
1 Traffic Resolution Issue		
0 80% Traffic Resolution Issue	RWD	Oct. 17

DESIGNED :	JASZ	Nov. 17
DRAWN :	AGDS	Nov. 17
DESIGN CHECKED :	BS	Nov 17
DRAFTING CHECKED :	NSD	Nov 17
CADFILE :	\\86075.0 100-100_125.dwg	
APPROVED :	NOT FOR CONSTRUCTION	
This drawing is not to be used for construction purposes unless signed as approved		
NOTES :	1. All dimensions are in metres unless noted otherwise. 2. Design layout and cycle path colour are for the purposes of consultation and are indicative only. 3. Survey supplied by Cardno (NZ) Limited. Ref. data: "NZ0117147-SU-3000.dwg". Rev. 1 dated 07/10/2017. 4. Aerial photo sourced from Cardno (NZ) Limited. Flown in October 2017. Ref. data: "NZ0117147_WCC_Urban_2017_WGTN2000.jpg". 5. Coordinate Datum: NZGD2000, Wellington Circuit Coordinates. Origin: 41 18 04S 174 46 35E 800,000mN 400,000mE	
REFERENCE :		

Tonkin+Taylor

Level 4, 2 Hunter St, Wellington
 Tel. (04) 381 8560 Fax. (09) 307 0265
 www.tonkintaylor.co.nz

CLIENT, PROJECT	WELLINGTON CITY COUNCIL	
	URBAN CYCLEWAYS PROGRAMME: EVANS BAY	
TITLE	EVANS BAY PARADE	
	Traffic Resolution (Sheet 13 of 28)	
SCALES (AT A3 SIZE)	DWG. No.	REV.
1: 250	86075.0 100- 112	1

P:\86075\86075.0100 Evans Bay\WorkingMaterial\CAD\DWG\86075.0100-100_125.dwg, 112, 9/11/2017 4:05:07 PM, jasz



REVISION DESCRIPTION	BY	DATE
1 Traffic Resolution Issue		
0 80% Traffic Resolution Issue	RWD	Oct. 17

DESIGNED :	JASZ	Nov. 17
DRAWN :	AGDS	Nov. 17
DESIGN CHECKED :	BS	Nov 17
DRAFTING CHECKED :	NSD	Nov 17
CADFILE :	\\86075.0 100-100_125.dwg	
APPROVED :	NOT FOR CONSTRUCTION	
This drawing is not to be used for construction purposes unless signed as approved		

Tonkin+Taylor

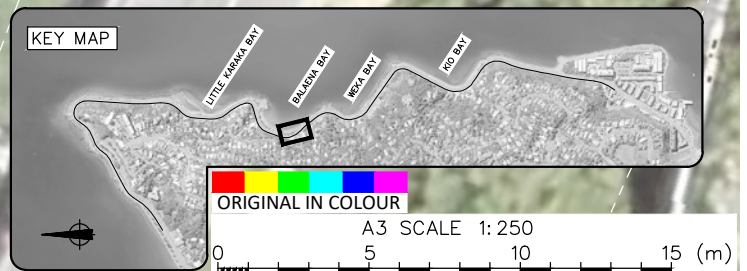
Level 4, 2 Hunter St, Wellington
 Tel. (04) 381 8560 Fax. (09) 307 0265
 www.tonkintaylor.co.nz

DRAWING STATUS: TRAFFIC RESOLUTION		
CLIENT, PROJECT		
WELLINGTON CITY COUNCIL		
URBAN CYCLEWAYS PROGRAMME: EVANS BAY		
TITLE		
EVANS BAY PARADE		
Traffic Resolution (Sheet 14 of 28)		
SCALES (AT A3 SIZE)	DWG. No.	REV.
1:250	86075.0 100-113	1

P:\86075\86075.0100 Evans Bay\WorkingMaterial\CAD\DWG\86075.0100-100_125.dwg, 113, 9/11/2017 4:06:01 PM, jasz



LEGEND	
24	House Number
[Solid Grey Line]	Property Boundary
[Dashed Grey Line]	Existing Top of Kerb
[Dashed Grey Line]	Existing Wall
[Dashed Red Line]	Existing Driveway
[Dashed Grey Line]	Existing Fence
[Dashed Grey Line]	Existing Bottom of Bank
[Dashed Grey Line]	Proposed Top of Kerb
[Dashed Yellow Line]	Proposed No Stopping Line
[Solid Grey Area]	Proposed Roadway
[Solid Green Area]	Proposed Cycle Path
[Solid Brown Area]	Proposed Safety Buffer
[Solid Grey Area]	Proposed Footpath



DRAWING STATUS: TRAFFIC RESOLUTION

REVISION DESCRIPTION	BY	DATE
1 Traffic Resolution Issue		
0 80% Traffic Resolution Issue	RWD	Oct. 17

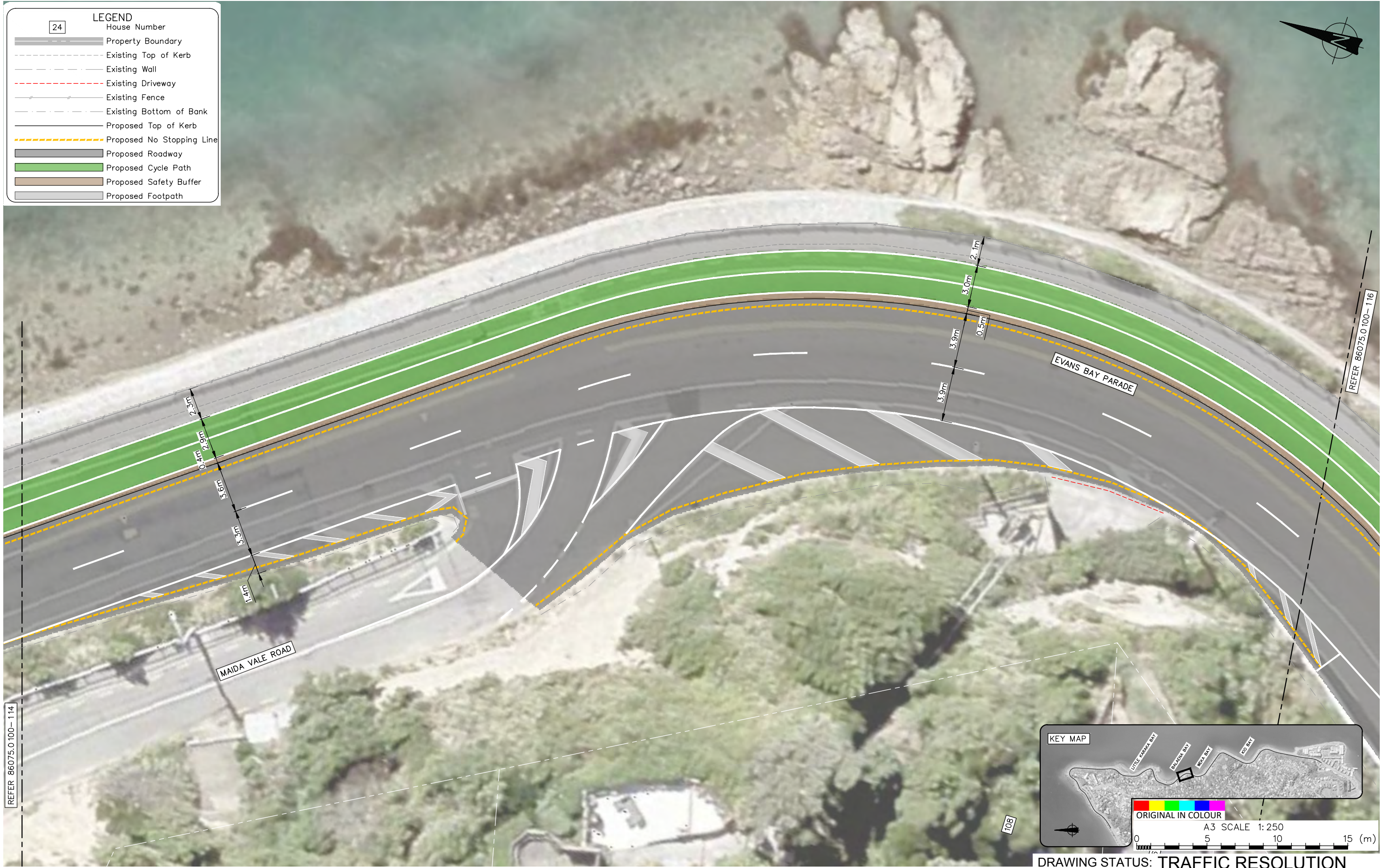
DESIGNED :	JASZ	Nov. 17
DRAWN :	AGDS	Nov. 17
DESIGN CHECKED :	BS	Nov 17
DRAFTING CHECKED :	NSD	Nov 17
CADFILE :	\\86075.0100-100_125.dwg	
APPROVED :	NOT FOR CONSTRUCTION	
This drawing is not to be used for construction purposes unless signed as approved		
REFERENCE :		

Tonkin+Taylor

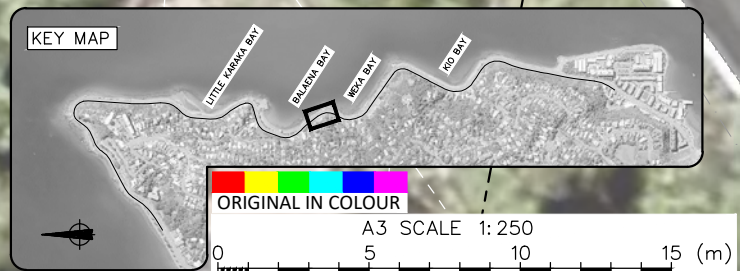
Level 4, 2 Hunter St, Wellington
 Tel. (04) 381 8560 Fax. (09) 307 0265
 www.tonkintaylor.co.nz

CLIENT, PROJECT	WELLINGTON CITY COUNCIL
URBAN CYCLEWAYS PROGRAMME:	EVANS BAY PARADE
TITLE	Traffic Resolution (Sheet 15 of 28)
SCALES (AT A3 SIZE)	1:250
DWG. No.	86075.0100-114
REV.	1

P:\86075\86075.0100 Evans Bay\WorkingMaterial\CAD\DWG\86075.0100-100_125.dwg, 114, 9/11/2017 4:07:00 PM, .jasz



LEGEND	
24	House Number
	Property Boundary
	Existing Top of Kerb
	Existing Wall
	Existing Driveway
	Existing Fence
	Existing Bottom of Bank
	Proposed Top of Kerb
	Proposed No Stopping Line
	Proposed Roadway
	Proposed Cycle Path
	Proposed Safety Buffer
	Proposed Footpath



DRAWING STATUS: TRAFFIC RESOLUTION

REVISION DESCRIPTION	BY	DATE
1 Traffic Resolution Issue		
0 80% Traffic Resolution Issue	RWD	Oct. 17

DESIGNED : JASZ Nov. 17
 DRAWN : AGDS Nov. 17
 DESIGN CHECKED : BS Nov 17
 DRAFTING CHECKED : NSD Nov 17
 CADFILE : \\86075.0100-100_125.dwg
 APPROVED :
NOT FOR CONSTRUCTION
 This drawing is not to be used for construction purposes unless signed as approved
 COPYRIGHT ON THIS DRAWING IS RESERVED

NOTES :
 1. All dimensions are in metres unless noted otherwise.
 2. Design layout and cycle path colour are for the purposes of consultation and are indicative only.
 3. Survey supplied by Cardno (NZ) Limited. Ref. data: "NZ0117147-SU-3000.dwg". Rev. 1 dated 07/10/2017.
 4. Aerial photo sourced from Cardno (NZ) Limited. Flown in October 2017. Ref. data: "NZ0117147_WCC_Urban_2017_WGTN2000.jpg".
 5. Coordinate Datum: NZGD2000, Wellington Circuit Coordinates.
 Origin: 41 18 04S 174 46 35E 800,000mN 400,000mE

REFERENCE :

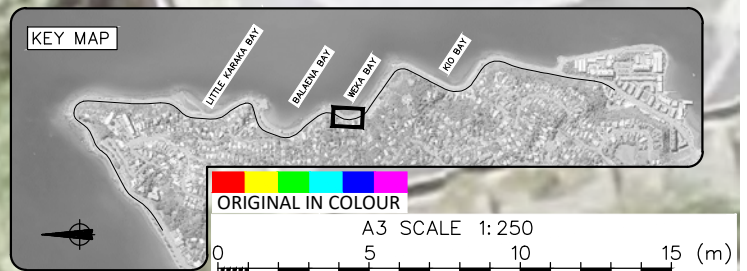
Tonkin+Taylor
 Level 4, 2 Hunter St, Wellington
 Tel. (04) 381 8560 Fax. (09) 307 0265
 www.tonkintaylor.co.nz

CLIENT, PROJECT		WELLINGTON CITY COUNCIL	
		URBAN CYCLEWAYS PROGRAMME: EVANS BAY	
TITLE		EVANS BAY PARADE	
		Traffic Resolution (Sheet 16 of 28)	
SCALES (AT A3 SIZE)	DWG. No.	REV.	
1:250	86075.0100-115	1	

P:\86075\86075.0100 Evans Bay\WorkingMaterial\CAD\DWG\86075.0100-100_125.dwg, 115, 9/11/2017 4:07:21 PM, jasz



LEGEND	
24	House Number
	Property Boundary
	Existing Top of Kerb
	Existing Wall
	Existing Driveway
	Existing Fence
	Existing Bottom of Bank
	Proposed Top of Kerb
	Proposed No Stopping Line
	Proposed Roadway
	Proposed Cycle Path
	Proposed Safety Buffer
	Proposed Footpath



DRAWING STATUS: TRAFFIC RESOLUTION

REVISION DESCRIPTION	BY	DATE
1 Traffic Resolution Issue		
0 80% Traffic Resolution Issue	RWD	Oct. 17

DESIGNED :	JASZ	Nov. 17
DRAWN :	AGDS	Nov. 17
DESIGN CHECKED :	BS	Nov 17
DRAFTING CHECKED :	NSD	Nov 17
CADFILE :	\\86075.0100-100_125.dwg	
APPROVED :	NOT FOR CONSTRUCTION	
This drawing is not to be used for construction purposes unless signed as approved		
REFERENCE :		

Tonkin+Taylor

Level 4, 2 Hunter St, Wellington
 Tel. (04) 381 8560 Fax. (09) 307 0265
 www.tonkintaylor.co.nz

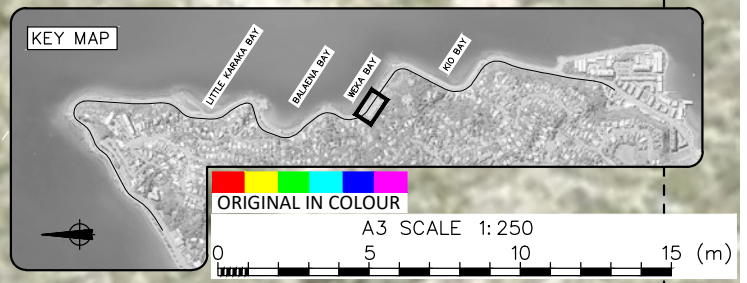
CLIENT, PROJECT	WELLINGTON CITY COUNCIL
URBAN CYCLEWAYS PROGRAMME:	EVANS BAY
TITLE	EVANS BAY PARADE
	Traffic Resolution (Sheet 17 of 28)
SCALES (AT A3 SIZE)	1: 250
DWG. No.	86075.0100- 116
REV.	1

P:\86075\86075.0100 Evans Bay\WorkingMaterial\CAD\DWG\86075.0100-100_125.dwg, 116, 9/11/2017 4:07:36 PM, jasz

P:\86075\86075.0100 Evans Bay\WorkingMaterial\CAD\DWG\86075.0100-100_125.dwg, 117, 9/11/2017 4:06:03 PM, jasz



LEGEND	
24	House Number
	Property Boundary
	Existing Top of Kerb
	Existing Wall
	Existing Driveway
	Existing Fence
	Existing Bottom of Bank
	Proposed Top of Kerb
	Proposed No Stopping Line
	Proposed Roadway
	Proposed Cycle Path
	Proposed Safety Buffer
	Proposed Footpath



REVISION DESCRIPTION	BY	DATE
1 Traffic Resolution Issue		
0 80% Traffic Resolution Issue	RWD	Oct. 17

DESIGNED :	JASZ	Nov. 17
DRAWN :	AGDS	Nov. 17
DESIGN CHECKED :	BS	Nov 17
DRAFTING CHECKED :	NSD	Nov 17
CADFILE :	\\86075.0100-100_125.dwg	
APPROVED :	NOT FOR CONSTRUCTION	
This drawing is not to be used for construction purposes unless signed as approved		

NOTES :

- All dimensions are in metres unless noted otherwise.
- Design layout and cycle path colour are for the purposes of consultation and are indicative only.
- Survey supplied by Cardno (NZ) Limited. Ref. data: "NZ0117147-SU-3000.dwg". Rev. 1 dated 07/10/2017.
- Aerial photo sourced from Cardno (NZ) Limited. Flown in October 2017. Ref. data: "NZ0117147_WCC_Urban_2017_WGTN2000.jpg".
- Coordinate Datum: NZGD2000, Wellington Circuit Coordinates. Origin: 41 18 04S 174 46 35E 800,000mN 400,000mE

Tonkin+Taylor

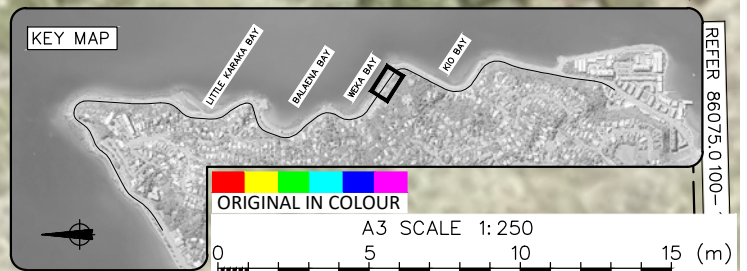
Level 4, 2 Hunter St, Wellington
 Tel. (04) 381 8560 Fax. (09) 307 0265
 www.tonkintaylor.co.nz

DRAWING STATUS: TRAFFIC RESOLUTION	
CLIENT, PROJECT	WELLINGTON CITY COUNCIL
	URBAN CYCLEWAYS PROGRAMME: EVANS BAY
TITLE	EVANS BAY PARADE
	Traffic Resolution (Sheet 18 of 28)
SCALES (AT A3 SIZE)	1:250
DWG. No.	86075.0100-117
REV.	1

REFER 86075.0100-117



LEGEND	
24	House Number
	Property Boundary
	Existing Top of Kerb
	Existing Wall
	Existing Driveway
	Existing Fence
	Existing Bottom of Bank
	Proposed Top of Kerb
	Proposed No Stopping Line
	Proposed Roadway
	Proposed Cycle Path
	Proposed Safety Buffer
	Proposed Footpath



REFER 86075.0100-118

DRAWING STATUS: TRAFFIC RESOLUTION

REVISION DESCRIPTION	BY	DATE
1 Traffic Resolution Issue		
0 80% Traffic Resolution Issue	RWD	Oct.17

DESIGNED :	JASZ	Nov.17
DRAWN :	AGDS	Nov.17
DESIGN CHECKED :	BS	Nov.17
DRAFTING CHECKED :	NSD	Nov.17
CADFILE :	\\86075.0100-100_125.dwg	
APPROVED :	NOT FOR CONSTRUCTION	
This drawing is not to be used for construction purposes unless signed as approved		

NOTES :

- All dimensions are in metres unless noted otherwise.
- Design layout and cycle path colour are for the purposes of consultation and are indicative only.
- Survey supplied by Cardno (NZ) Limited. Ref. data: "NZ0117147-SU-3000.dwg". Rev. 1 dated 07/10/2017.
- Aerial photo sourced from Cardno (NZ) Limited. Flown in October 2017. Ref. data: "NZ0117147_WCC_Urban_2017_WGTN2000.jpg".
- Coordinate Datum: NZGD2000, Wellington Circuit Coordinates. Origin: 41 18 04S 174 46 35E 800,000mN 400,000mE

REFERENCE :

Tonkin+Taylor

Level 4, 2 Hunter St, Wellington
 Tel. (04) 381 8560 Fax. (09) 307 0265
 www.tonkintaylor.co.nz

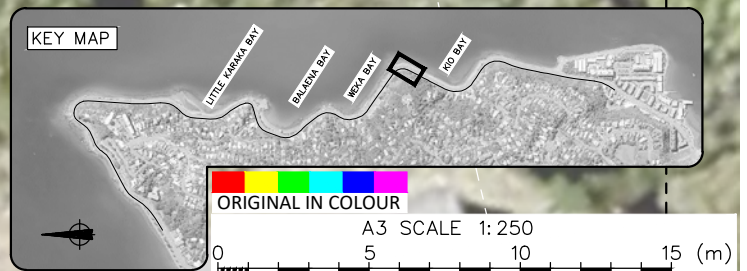
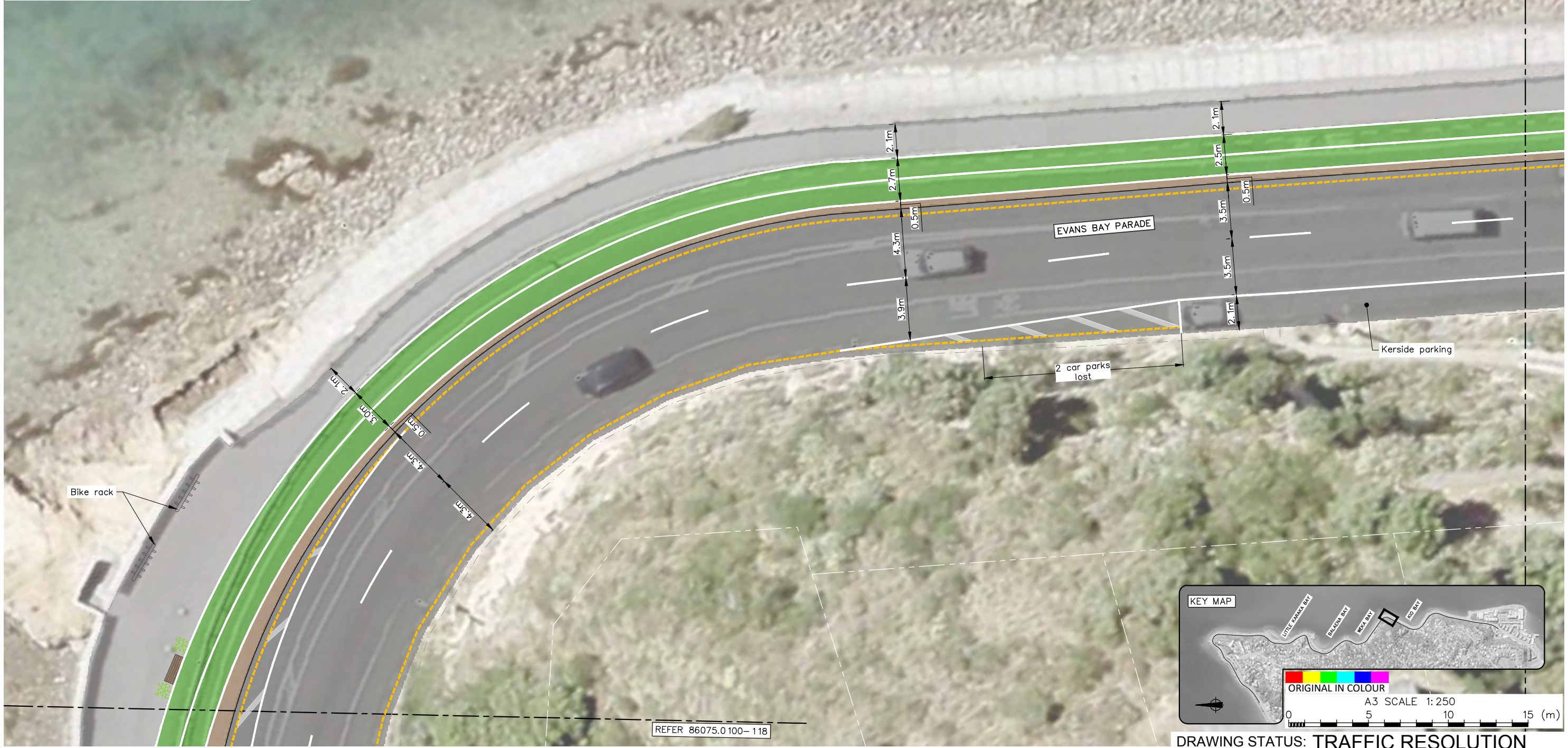
CLIENT, PROJECT	WELLINGTON CITY COUNCIL
URBAN CYCLEWAYS PROGRAMME:	EVANS BAY
TITLE	EVANS BAY PARADE
	Traffic Resolution (Sheet 19 of 28)
SCALES (AT A3 SIZE)	1:250
DWG. No.	86075.0100-118
REV.	1

P:\86075\86075.0100 Evans Bay\WorkingMaterial\CAD\DWG\86075.0100-100_125.dwg, 118, 9/11/2017 4:06:09 PM, jasz

REFER 86075.0 100-120



LEGEND	
24	House Number
	Property Boundary
	Existing Top of Kerb
	Existing Wall
	Existing Driveway
	Existing Fence
	Existing Bottom of Bank
	Proposed Top of Kerb
	Proposed No Stopping Line
	Proposed Roadway
	Proposed Cycle Path
	Proposed Safety Buffer
	Proposed Footpath



DRAWING STATUS: TRAFFIC RESOLUTION

REVISION DESCRIPTION	BY	DATE
1 Traffic Resolution Issue		
0 80% Traffic Resolution Issue	RWD	Oct. 17

DESIGNED :	JASZ	Nov. 17
DRAWN :	AGDS	Nov. 17
DESIGN CHECKED :	BS	Nov 17
DRAFTING CHECKED :	NSD	Nov 17
CADFILE :	\\86075.0 100-100_125.dwg	
APPROVED :	NOT FOR CONSTRUCTION	
This drawing is not to be used for construction purposes unless signed as approved		

NOTES :

- All dimensions are in metres unless noted otherwise.
- Design layout and cycle path colour are for the purposes of consultation and are indicative only.
- Survey supplied by Cardno (NZ) Limited. Ref. data: "NZ0117147-SU-3000.dwg". Rev. 1 dated 07/10/2017.
- Aerial photo sourced from Cardno (NZ) Limited. Flown in October 2017. Ref. data: "NZ0117147_WCC_Urban_2017_WGTN2000.jpg".
- Coordinate Datum: NZGD2000, Wellington Circuit Coordinates. Origin: 41 18 04S 174 46 35E 800,000mN 400,000mE

REFERENCE :

Tonkin+Taylor

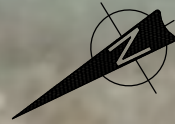
Level 4, 2 Hunter St, Wellington
 Tel. (04) 381 8560 Fax. (09) 307 0265
 www.tonkintaylor.co.nz

CLIENT, PROJECT	WELLINGTON CITY COUNCIL
URBAN CYCLEWAYS PROGRAMME:	EVANS BAY
TITLE	EVANS BAY PARADE
	Traffic Resolution (Sheet 20 of 28)
SCALES (AT A3 SIZE)	1:250
DWG. No.	86075.0 100-119
REV.	1

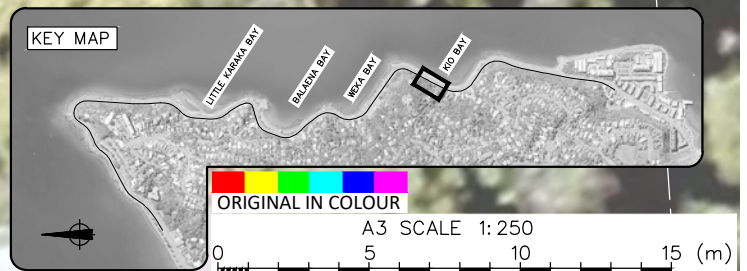
P:\86075\86075.0100 Evans Bay\WorkingMaterial\CAD\DWG\86075.0100-100_125.dwg, 119, 9/11/2017 4:08:13 PM, jasz

REFER 86075.0100-119

REFER 86075.0100-121



LEGEND	
24	House Number
	Property Boundary
	Existing Top of Kerb
	Existing Wall
	Existing Driveway
	Existing Fence
	Existing Bottom of Bank
	Proposed Top of Kerb
	Proposed No Stopping Line
	Proposed Roadway
	Proposed Cycle Path
	Proposed Safety Buffer
	Proposed Footpath



DRAWING STATUS: TRAFFIC RESOLUTION

REVISION DESCRIPTION	BY	DATE
1 Traffic Resolution Issue		
0 80% Traffic Resolution Issue	RWD	Oct. 17

DESIGNED :	JASZ	Nov. 17
DRAWN :	AGDS	Nov. 17
DESIGN CHECKED :	BS	Nov 17
DRAFTING CHECKED :	NSD	Nov 17
CADFILE :	\\86075.0100-100_125.dwg	
APPROVED :	NOT FOR CONSTRUCTION	
This drawing is not to be used for construction purposes unless signed as approved		
NOTES :	1. All dimensions are in metres unless noted otherwise. 2. Design layout and cycle path colour are for the purposes of consultation and are indicative only. 3. Survey supplied by Cardno (NZ) Limited. Ref. data: "NZ0117147-SU-3000.dwg". Rev. 1 dated 07/10/2017. 4. Aerial photo sourced from Cardno (NZ) Limited. Flown in October 2017. Ref. data: "NZ0117147_WCC_Urban_2017_WGTN2000.jpg". 5. Coordinate Datum: NZGD2000, Wellington Circuit Coordinates. Origin: 41 18 04S 174 46 35E 800,000mN 400,000mE	
REFERENCE :		

Tonkin+Taylor
 Level 4, 2 Hunter St, Wellington
 Tel. (04) 381 8560 Fax. (09) 307 0265
 www.tonkintaylor.co.nz

CLIENT, PROJECT	WELLINGTON CITY COUNCIL	
	URBAN CYCLEWAYS PROGRAMME: EVANS BAY	
TITLE	EVANS BAY PARADE	
	Traffic Resolution (Sheet 21 of 28)	
SCALES (AT A3 SIZE)	DWG. No.	REV.
1:250	86075.0100-120	1



DESIGNED :	JASZ	Nov. 17
DRAWN :	AGDS	Nov. 17
DESIGN CHECKED :	BS	Nov 17
DRAFTING CHECKED :	NSD	Nov 17
CADFILE :	\\86075.0100-100_125.dwg	
APPROVED :	NOT FOR CONSTRUCTION	
REVISION DESCRIPTION	BY	DATE
1 Traffic Resolution Issue		
0 80% Traffic Resolution Issue	RWD	Oct. 17

NOTES :

- All dimensions are in metres unless noted otherwise.
- Design layout and cycle path colour are for the purposes of consultation and are indicative only.
- Survey supplied by Cardno (NZ) Limited. Ref. data: "NZ0117147-SU-3000.dwg". Rev. 1 dated 07/10/2017.
- Aerial photo sourced from Cardno (NZ) Limited. Flown in October 2017. Ref. data: "NZ0117147_WCC_Urban_2017_WGTN2000.jpg".
- Coordinate Datum: NZGD2000, Wellington Circuit Coordinates. Origin: 41 18 04S 174 46 35E 800,000mN 400,000mE

REFERENCE :

Tonkin+Taylor

Level 4, 2 Hunter St, Wellington
 Tel. (04) 381 8560 Fax. (09) 307 0265
 www.tonkintaylor.co.nz

CLIENT, PROJECT
WELLINGTON CITY COUNCIL
 URBAN CYCLEWAYS PROGRAMME: EVANS BAY

TITLE
EVANS BAY PARADE
 Traffic Resolution (Sheet 22 of 28)

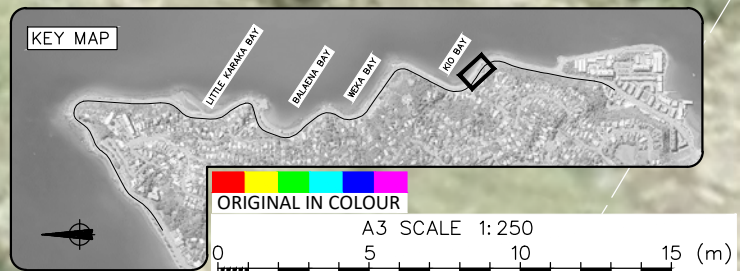
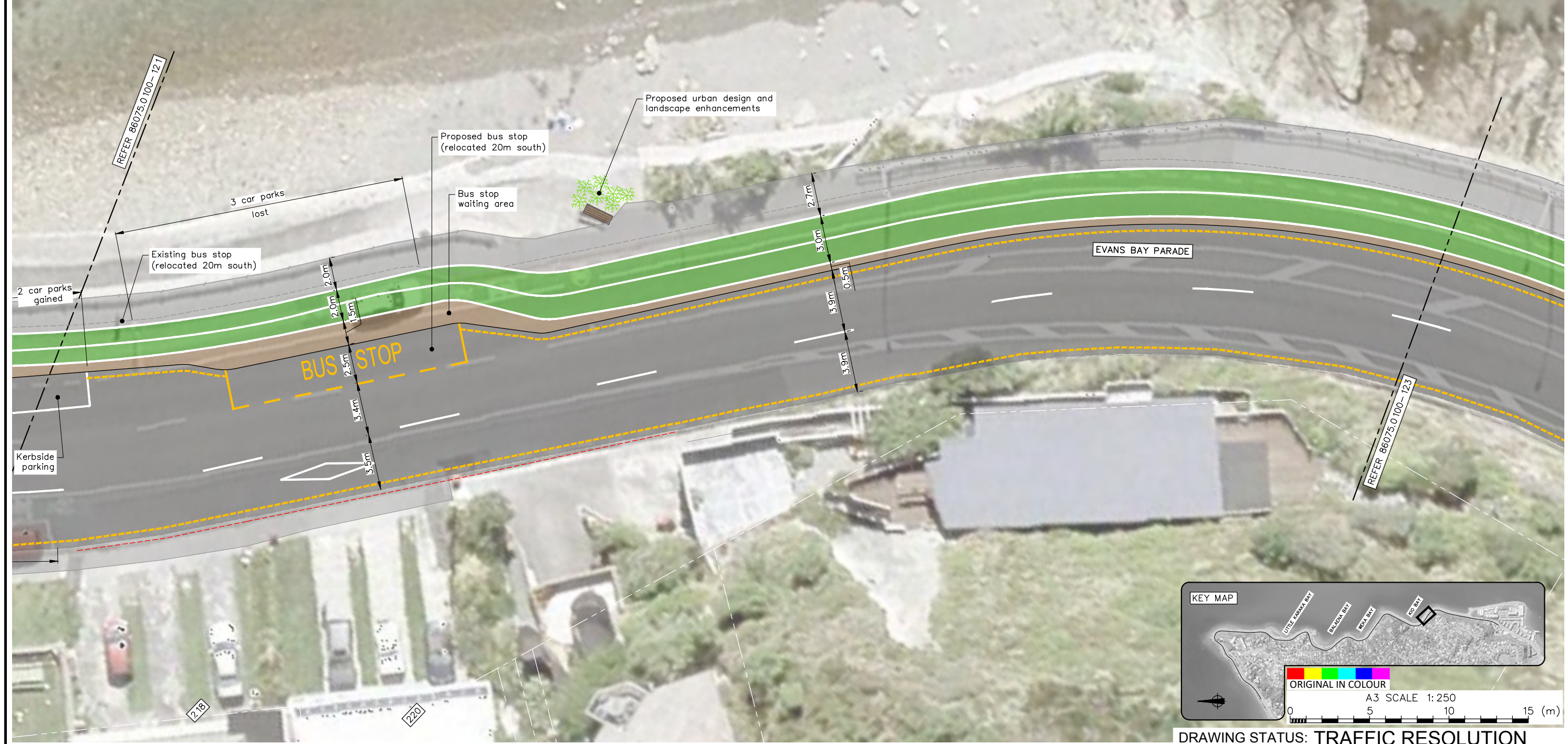
SCALES (AT A3 SIZE)
 1:250

DWG. No.
 86075.0100-121

REV.
 1

P:\86075\86075.0100 Evans Bay\WorkingMaterial\CAD\DWG\86075.0100-100_125.dwg, 121, 9/11/2017 4:09:04 PM, jasz

LEGEND	
[24]	House Number
[Solid Grey Line]	Property Boundary
[Dashed Grey Line]	Existing Top of Kerb
[Dashed Grey Line]	Existing Wall
[Dashed Red Line]	Existing Driveway
[Dashed Grey Line]	Existing Fence
[Dashed Grey Line]	Existing Bottom of Bank
[Solid Grey Line]	Proposed Top of Kerb
[Dashed Yellow Line]	Proposed No Stopping Line
[Solid Grey Area]	Proposed Roadway
[Green Area]	Proposed Cycle Path
[Brown Area]	Proposed Safety Buffer
[Light Grey Area]	Proposed Footpath



DRAWING STATUS: TRAFFIC RESOLUTION

REVISION DESCRIPTION	BY	DATE
1 Traffic Resolution Issue		
0 80% Traffic Resolution Issue	RWD	Oct. 17

DESIGNED :	JASZ	Nov. 17
DRAWN :	AGDS	Nov. 17
DESIGN CHECKED :	BS	Nov 17
DRAFTING CHECKED :	NSD	Nov 17
CADFILE :	\\86075.0 100-100_125.dwg	
APPROVED :	NOT FOR CONSTRUCTION	
This drawing is not to be used for construction purposes unless signed as approved		
COPYRIGHT ON THIS DRAWING IS RESERVED		

- NOTES :
- All dimensions are in metres unless noted otherwise.
 - Design layout and cycle path colour are for the purposes of consultation and are indicative only.
 - Survey supplied by Cardno (NZ) Limited. Ref. data: "NZ0117147-SU-3000.dwg". Rev. 1 dated 07/10/2017.
 - Aerial photo sourced from Cardno (NZ) Limited. Flown in October 2017. Ref. data: "NZ0117147_WCC_Urban_2017_WGTN2000.jpg".
 - Coordinate Datum: NZGD2000, Wellington Circuit Coordinates. Origin: 41 18 04S 174 46 35E 800,000mN 400,000mE

Tonkin+Taylor

Level 4, 2 Hunter St, Wellington
 Tel. (04) 381 8560 Fax. (09) 307 0265
 www.tonkintaylor.co.nz

CLIENT, PROJECT		
WELLINGTON CITY COUNCIL		
URBAN CYCLEWAYS PROGRAMME: EVANS BAY		
TITLE		
EVANS BAY PARADE		
Traffic Resolution (Sheet 23 of 28)		
SCALES (AT A3 SIZE)	DWG. No.	REV.
1:250	86075.0 100-122	1

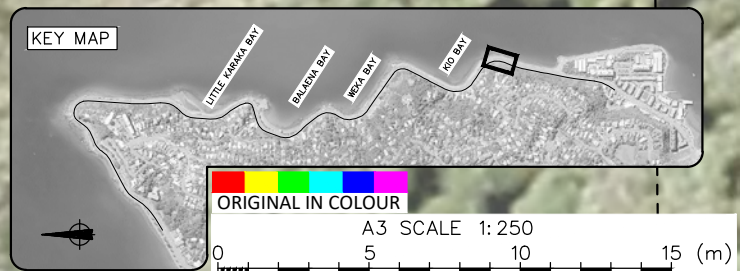
P:\86075\86075.0100 Evans Bay\WorkingMaterial\CAD\DWG\86075.0100-100_125.dwg, 122, 9/11/2017 4:09:13 PM, jasz



LEGEND	
24	House Number
	Property Boundary
	Existing Top of Kerb
	Existing Wall
	Existing Driveway
	Existing Fence
	Existing Bottom of Bank
	Proposed Top of Kerb
	Proposed No Stopping Line
	Proposed Roadway
	Proposed Cycle Path
	Proposed Safety Buffer
	Proposed Footpath

REFER 86075.0100-124

REFER 86075.0100-122



DRAWING STATUS: TRAFFIC RESOLUTION

REVISION DESCRIPTION	BY	DATE
1 Traffic Resolution Issue		
0 80% Traffic Resolution Issue	RWD	Oct. 17

DESIGNED :	JASZ	Nov. 17
DRAWN :	AGDS	Nov. 17
DESIGN CHECKED :	BS	Nov 17
DRAFTING CHECKED :	NSD	Nov 17
CADFILE :	\\86075.0100-100_125.dwg	
APPROVED :	NOT FOR CONSTRUCTION	
This drawing is not to be used for construction purposes unless signed as approved		

NOTES :

- All dimensions are in metres unless noted otherwise.
- Design layout and cycle path colour are for the purposes of consultation and are indicative only.
- Survey supplied by Cardno (NZ) Limited. Ref. data: "NZ0117147-SU-3000.dwg". Rev. 1 dated 07/10/2017.
- Aerial photo sourced from Cardno (NZ) Limited. Flown in October 2017. Ref. data: "NZ0117147_WCC_Urban_2017_WGTN2000.jpg".
- Coordinate Datum: NZGD2000, Wellington Circuit Coordinates. Origin: 41 18 04S 174 46 35E 800,000mN 400,000mE

REFERENCE :

Tonkin+Taylor

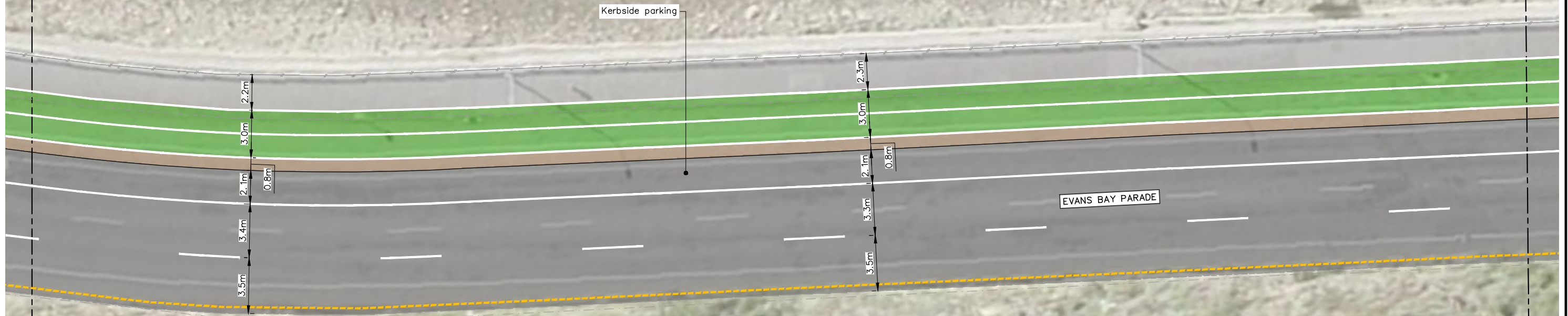
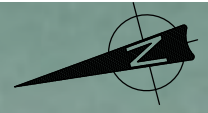
Level 4, 2 Hunter St, Wellington
 Tel. (04) 381 8560 Fax. (09) 307 0265
 www.tonkintaylor.co.nz

CLIENT, PROJECT	WELLINGTON CITY COUNCIL
URBAN CYCLEWAYS PROGRAMME:	EVANS BAY PARADE
TITLE	Traffic Resolution (Sheet 24 of 28)
SCALES (AT A3 SIZE)	1:250
DWG. No.	86075.0100-123
REV.	1

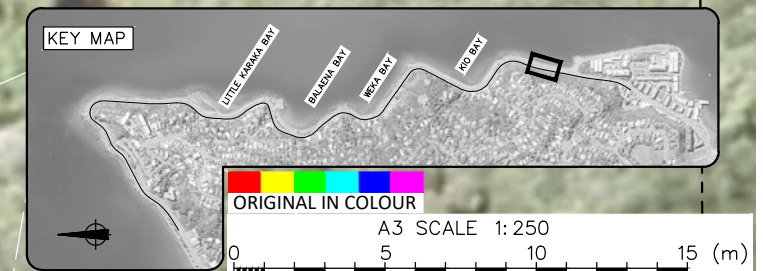
P:\86075\86075.0100 Evans Bay\WorkingMaterial\CAD\DWG\86075.0100-100_125.dwg, 123, 9/11/2017 4:09:17 PM, jasz

REFER 86075.0100-123

REFER 86075.0100-125



LEGEND	
24	House Number
	Property Boundary
	Existing Top of Kerb
	Existing Wall
	Existing Driveway
	Existing Fence
	Existing Bottom of Bank
	Proposed Top of Kerb
	Proposed No Stopping Line
	Proposed Roadway
	Proposed Cycle Path
	Proposed Safety Buffer
	Proposed Footpath



DRAWING STATUS: TRAFFIC RESOLUTION

REVISION DESCRIPTION	BY	DATE
1 Traffic Resolution Issue		
0 80% Traffic Resolution Issue	RWD	Oct.17

DESIGNED :	JASZ	Nov.17
DRAWN :	AGDS	Nov.17
DESIGN CHECKED :	BS	Nov.17
DRAFTING CHECKED :	NSD	Nov.17
CADFILE :	\\86075.0100-100_125.dwg	
APPROVED :	NOT FOR CONSTRUCTION	
This drawing is not to be used for construction purposes unless signed as approved		
REFERENCE :		

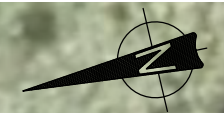
Tonkin+Taylor

Level 4, 2 Hunter St, Wellington
 Tel. (04) 381 8560 Fax. (09) 307 0265
 www.tonkintaylor.co.nz

CLIENT, PROJECT	WELLINGTON CITY COUNCIL
URBAN CYCLEWAYS PROGRAMME:	EVANS BAY
TITLE	EVANS BAY PARADE
	Traffic Resolution (Sheet 25 of 28)
SCALES (AT A3 SIZE)	1:250
DWG. No.	86075.0100-124
REV.	1

REFER 86075.0100-124

REFER 86075.0100-126

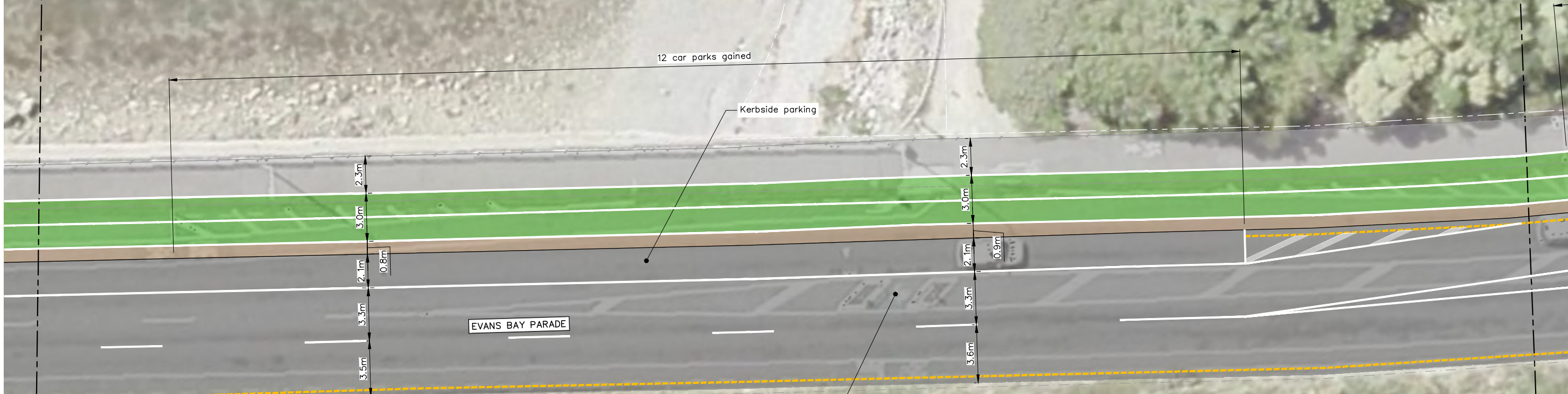


12 car parks gained

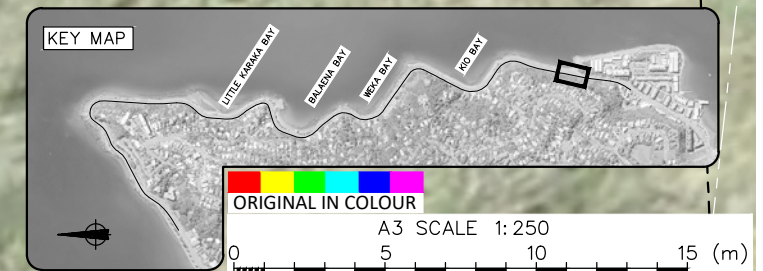
Kerbside parking

EVANS BAY PARADE

Relocate existing cyclelane/shared path transition. Remove existing traffic island and cycle markings.



LEGEND	
24	House Number
	Property Boundary
	Existing Top of Kerb
	Existing Wall
	Existing Driveway
	Existing Fence
	Existing Bottom of Bank
	Proposed Top of Kerb
	Proposed No Stopping Line
	Proposed Roadway
	Proposed Cycle Path
	Proposed Safety Buffer
	Proposed Footpath



DRAWING STATUS: TRAFFIC RESOLUTION

REVISION DESCRIPTION	BY	DATE	DESIGNED :	JASZ	Nov. 17
1 Traffic Resolution Issue			DRAWN :	AGDS	Nov. 17
0 80% Traffic Resolution Issue	RWD	Oct. 17	DESIGN CHECKED :	BS	Nov 17
			DRAFTING CHECKED :	NSD	Nov 17
			CADFILE :	\\86075.0100-100_125.dwg	
			APPROVED :	NOT FOR CONSTRUCTION	
			This drawing is not to be used for construction purposes unless signed as approved		
COPYRIGHT ON THIS DRAWING IS RESERVED					

NOTES :

- All dimensions are in metres unless noted otherwise.
- Design layout and cycle path colour are for the purposes of consultation and are indicative only.
- Survey supplied by Cardno (NZ) Limited. Ref. data: "NZ0117147-SU-3000.dwg". Rev. 1 dated 07/10/2017.
- Aerial photo sourced from Cardno (NZ) Limited. Flown in October 2017. Ref. data: "NZ0117147_WCC_Urban_2017_WGTN2000.jpg".
- Coordinate Datum: NZGD2000, Wellington Circuit Coordinates. Origin: 41 18 04S 174 46 35E 800,000mN 400,000mE

REFERENCE :

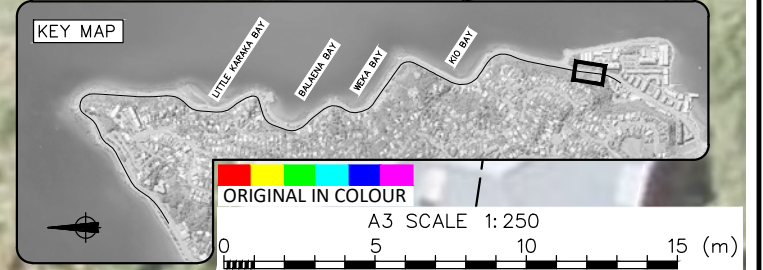
Tonkin+Taylor
 Level 4, 2 Hunter St, Wellington
 Tel. (04) 381 8560 Fax. (09) 307 0265
 www.tonkintaylor.co.nz

CLIENT, PROJECT	
WELLINGTON CITY COUNCIL	
URBAN CYCLEWAYS PROGRAMME: EVANS BAY	
TITLE	
EVANS BAY PARADE	
Traffic Resolution (Sheet 26 of 28)	
SCALES (AT A3 SIZE)	DWG. No.
1: 250	86075.0100-125
	REV.
	1

P:\86075\86075.0100 Evans Bay\WorkingMaterial\CAD\DWG\86075.0100-100_125.dwg, 125, 9/11/2017 4:09:28 PM, .jasc



LEGEND	
24	House Number
	Property Boundary
	Existing Top of Kerb
	Existing Wall
	Existing Driveway
	Existing Fence
	Existing Bottom of Bank
	Proposed Top of Kerb
	Proposed No Stopping Line
	Proposed Roadway
	Proposed Cycle Path
	Proposed Safety Buffer
	Proposed Footpath



DRAWING STATUS: TRAFFIC RESOLUTION

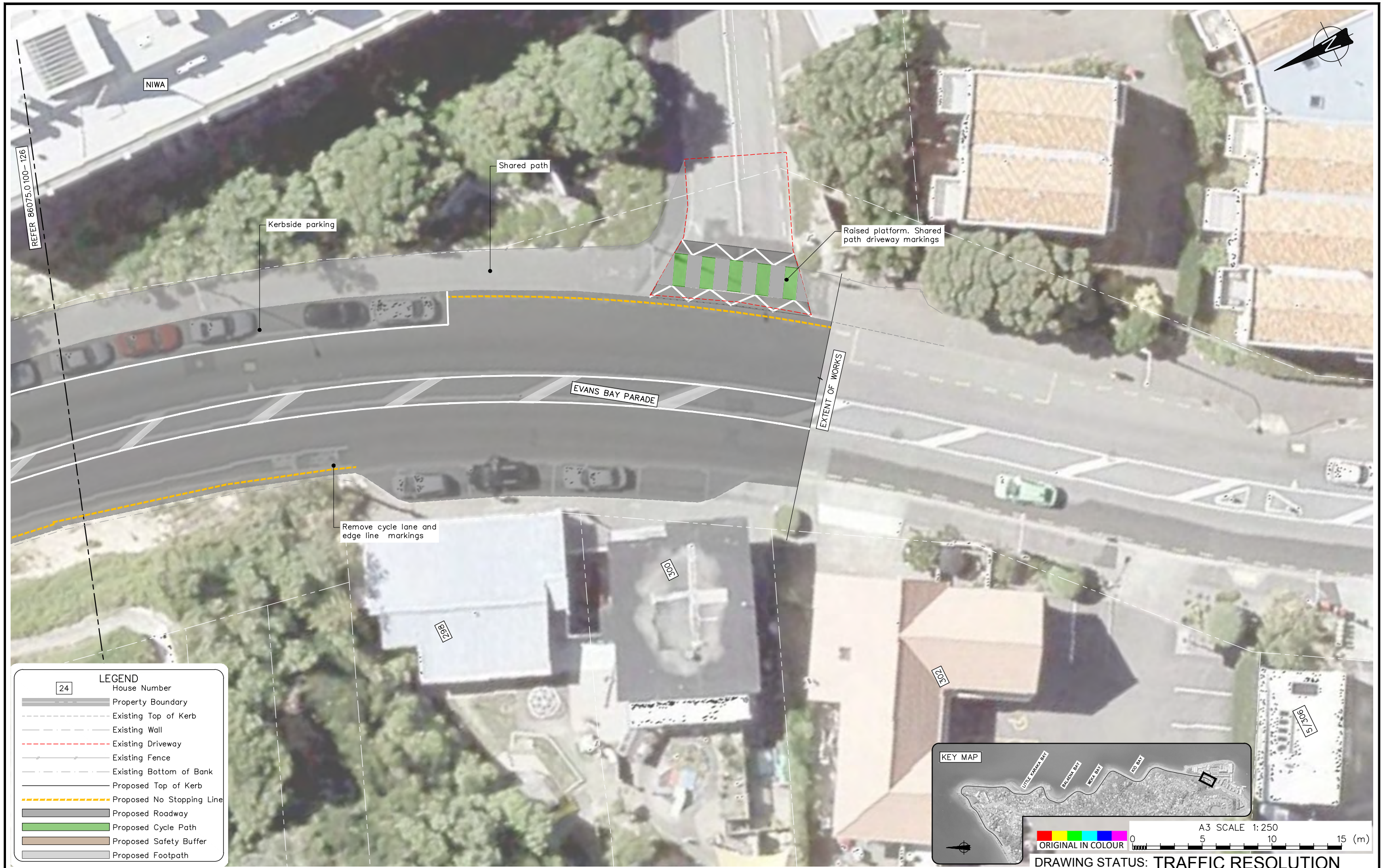
REVISION DESCRIPTION	BY	DATE
1 Traffic Resolution Issue		
0 80% Traffic Resolution Issue	RWD	Oct. 17

DESIGNED :	JASZ	Nov. 17
DRAWN :	AGDS	Nov. 17
DESIGN CHECKED :	BS	Nov 17
DRAFTING CHECKED :	NSD	Nov 17
CADFILE :	\\86075.0 100-100_125.dwg	
APPROVED :	NOT FOR CONSTRUCTION	
This drawing is not to be used for construction purposes unless signed as approved		
REFERENCE :		

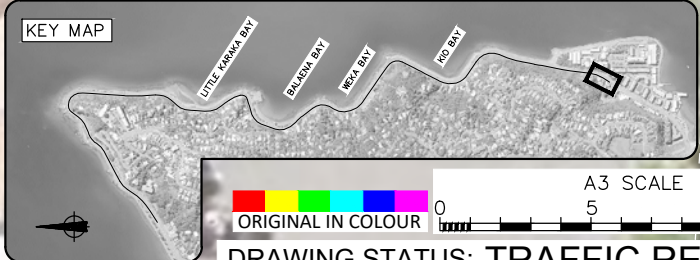
Tonkin+Taylor

Level 4, 2 Hunter St, Wellington
 Tel. (04) 381 8560 Fax. (09) 307 0265
 www.tonkintaylor.co.nz

CLIENT, PROJECT	WELLINGTON CITY COUNCIL	
	URBAN CYCLEWAYS PROGRAMME: EVANS BAY	
TITLE	EVANS BAY PARADE	
	Traffic Resolution (Sheet 27 of 28)	
SCALES (AT A3 SIZE)	DWG. No.	REV.
1:250	86075.0 100-126	1



LEGEND	
24	House Number
	Property Boundary
	Existing Top of Kerb
	Existing Wall
	Existing Driveway
	Existing Fence
	Existing Bottom of Bank
	Proposed Top of Kerb
	Proposed No Stopping Line
	Proposed Roadway
	Proposed Cycle Path
	Proposed Safety Buffer
	Proposed Footpath



A3 SCALE 1: 250
ORIGINAL IN COLOUR

DRAWING STATUS: TRAFFIC RESOLUTION

REVISION DESCRIPTION	BY	DATE
1 Traffic Resolution Issue		
0 80% Traffic Resolution Issue	RWD	Oct. 17

DESIGNED :	JASZ	Nov. 17
DRAWN :	AGDS	Nov. 17
DESIGN CHECKED :	BS	Nov 17
DRAFTING CHECKED :	NSD	Nov 17
CADFILE :	\\86075.0100-100_125.dwg	
APPROVED :	NOT FOR CONSTRUCTION	
This drawing is not to be used for construction purposes unless signed as approved		

NOTES :

- All dimensions are in metres unless noted otherwise.
- Design layout and cycle path colour are for the purposes of consultation and are indicative only.
- Survey supplied by Cardno (NZ) Limited. Ref. data: "NZ0117147-SU-3000.dwg". Rev. 1 dated 07/10/2017.
- Aerial photo sourced from Cardno (NZ) Limited. Flown in October 2017. Ref. data: "NZ0117147_WCC_Urban_2017_WGTN2000.jpg".
- Coordinate Datum: NZGD2000, Wellington Circuit Coordinates. Origin: 41 18 04S 174 46 35E 800,000mN 400,000mE

REFERENCE :

Tonkin+Taylor
 Level 4, 2 Hunter St, Wellington
 Tel. (04) 381 8560 Fax. (09) 307 0265
 www.tonkintaylor.co.nz

CLIENT, PROJECT	WELLINGTON CITY COUNCIL
URBAN CYCLEWAYS PROGRAMME:	EVANS BAY PARADE
TITLE	Traffic Resolution (Sheet 28 of 28)
SCALES (AT A3 SIZE)	1: 250
DWG. No.	86075.0100-127
REV.	1