

# Help shape safer Newtown Connections

Absolutely Positively  
**Wellington City Council**  
Me Heke Ki Pōneke

We plan to make it safer and easier for people on bikes in Berhampore, Newtown and Mt Cook, and need your help as we take a fresh look at how best to improve neighbourhood connections and develop safer links to the city.

We'll be looking at earlier work and feedback, but are keen to have as much local knowledge as possible. The Newtown Connections project will include improvements for people on foot, and other changes - so no matter how you travel, we want your thoughts.

You can answer these questions online at [transportprojects.org.nz](https://transportprojects.org.nz), use our equipment to do it online (and get assistance if you need it) at **Kia Ora Newtown (8 Constable Street)**, email your thoughts to [transport@wcc.govt.nz](mailto:transport@wcc.govt.nz) or post this form to us (no stamp needed). Tell us what you think by **5pm, Tuesday 17 July**.

## Privacy statement - what we do with your personal information

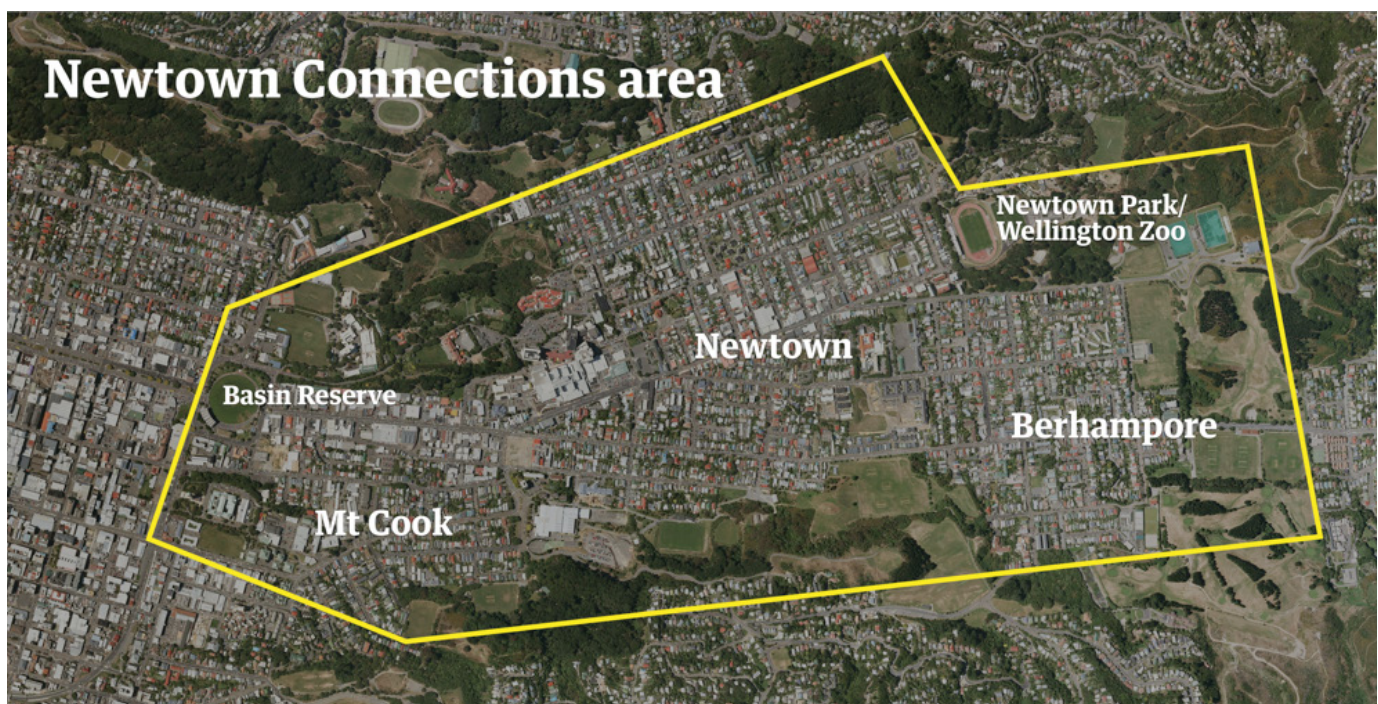
All submissions (including names and contact details) are provided in full to elected members. Submissions (including names but not contact details) will be made available to the public at our office and on our website. Your personal information will also be used for the administration of the consultation process, including informing you of the outcome of the consultation. All information collected will be held by Wellington City Council, 101 Wakefield Street, Wellington, with submitters having the right to access and correct personal information. For more information about our privacy policy visit the Wellington City Council website.

## Section 1 – Your details

Your name: (required)
Your email address or phone number:
Your postal address: (required)
Which age group do you belong to? (please tick one)
<input type="checkbox"/> Under 14 <input type="checkbox"/> 14-18 <input type="checkbox"/> 19-29 <input type="checkbox"/> 30-39 <input type="checkbox"/> 40-49
<input type="checkbox"/> 50-59 <input type="checkbox"/> 60-69 <input type="checkbox"/> 70-79 <input type="checkbox"/> 80+

## Section 2 - Share your thoughts on getting around the wider Newtown area - Berhampore, Newtown and Mt Cook

In the following questions, you'll be asked to think about the different ways you, and other people move around this area.



# Section 2 – Share your thoughts

How would you rate the Newtown Connections area for **people walking**?

<b>To and from the central city on weekdays?</b> When most people are going to school or work						
<b>1</b> Poor	<b>2</b>	<b>3</b>	<b>4</b>	<b>5</b>	<b>6</b>	<b>7</b> Excellent
<b>To and from the central city on weekends?</b> When most people are going to shopping areas, recreation facilities or visiting friends						
<b>1</b> Poor	<b>2</b>	<b>3</b>	<b>4</b>	<b>5</b>	<b>6</b>	<b>7</b> Excellent
<b>To and from surrounding suburbs?</b>						
<b>1</b> Poor	<b>2</b>	<b>3</b>	<b>4</b>	<b>5</b>	<b>6</b>	<b>7</b> Excellent
<b>In and around the area?</b> To/from schools and Massey University, shopping areas, recreation and community facilities (eg hospitals, Wellington Zoo, sportsfields etc)						
<b>1</b> Poor	<b>2</b>	<b>3</b>	<b>4</b>	<b>5</b>	<b>6</b>	<b>7</b> Excellent
<b>Thinking about people walking around and through the Newtown Connections area - day and night - are there any specific places or issues you think need consideration?</b>						

## Section 2 – Share your thoughts

How would you rate the Newtown Connections area for **people riding bikes?**

### To and from the central city on weekdays?

When most people are going to school or work

**1**  
Poor

**2**

**3**

**4**

**5**

**6**

**7**  
Excellent

### To and from the central city on weekends?

When most people are going to shopping areas, recreation facilities or visiting friends

**1**  
Poor

**2**

**3**

**4**

**5**

**6**

**7**  
Excellent

### To and from surrounding suburbs?

**1**  
Poor

**2**

**3**

**4**

**5**

**6**

**7**  
Excellent

### In and around the area?

To/from schools and Massey University, shopping areas, recreation and community facilities (eg hospitals, Wellington Zoo, sportsfields etc)

**1**  
Poor

**2**

**3**

**4**

**5**

**6**

**7**  
Excellent

**Thinking about people riding bikes through or around the Newtown Connections area - day or night - or parking a bike in this area, are there any specific places or issues you think need consideration?**

## Section 2 – Share your thoughts

How would you rate the Newtown Connections area for **people in cars and on motorbikes?**

### To and from the central city on weekdays?

When most people are going to school or work

**1**  
Poor

**2**

**3**

**4**

**5**

**6**

**7**  
Excellent

### To and from the central city on weekends?

When most people are going to shopping areas, recreation facilities or visiting friends

**1**  
Poor

**2**

**3**

**4**

**5**

**6**

**7**  
Excellent

### To and from surrounding suburbs?

**1**  
Poor

**2**

**3**

**4**

**5**

**6**

**7**  
Excellent

### In and around the area?

To/from schools and Massey University, shopping areas, recreation and community facilities (eg hospitals, Wellington Zoo, sportsfields etc)

**1**  
Poor

**2**

**3**

**4**

**5**

**6**

**7**  
Excellent

**Thinking about people in cars/on motorbikes getting around, through or parking in the Newtown Connections area - day and night - are there any specific places or issues you think need consideration?**

## Section 2 – Share your thoughts

How would you rate the Newtown Connections area for **people using the bus?**

### To and from the central city on weekdays?

When most people are going to school or work

**1**  
Poor

**2**

**3**

**4**

**5**

**6**

**7**  
Excellent

### To and from the central city on weekends?

When most people are going to shopping areas, recreation facilities or visiting friends

**1**  
Poor

**2**

**3**

**4**

**5**

**6**

**7**  
Excellent

### To and from surrounding suburbs?

**1**  
Poor

**2**

**3**

**4**

**5**

**6**

**7**  
Excellent

### In and around the area?

To/from schools and Massey University, shopping areas, recreation and community facilities (eg hospitals, Wellington Zoo, sportsfields etc)

**1**  
Poor

**2**

**3**

**4**

**5**

**6**

**7**  
Excellent

**Thinking about people getting to/from bus stops, on and off the bus, the number and location of bus stops, and shelters - day and night - are there any specific places or issues you think need consideration?**

## Section 3 - You and your community

Overall, what are the things you love or value most about the Newtown Connections area (Berhampore, Newtown and Mt Cook) that you would like designers to consider?

Where do you live in relation to the Newtown Connections area?

- I live in Berhampore, Newtown or Mt Cook
- I live in nearby suburbs
- I live in Wellington
- Other

When thinking about possible improvements to the transport network, which trip within the Newtown Connections area is **most important** to you?

Please select **one**

- Getting to school or university in the area  
Which school: \_\_\_\_\_
- Getting to work/my business in the area.  
Which suburb: a)Newtown b)Berhampore c)Mt Cook
- Taking my kids to school/daycare/preschool in the area.  
Which school: \_\_\_\_\_
- Travel through/out of the area
- Visiting friends/family in the area
- Getting to shops, cafes and bars in the area

What is the **main** way you currently get around the area on **weekdays**?

Please select **one**

- in a car
- on a motorbike
- on a bicycle
- use the bus
- walking
- other

What is the **main** way you currently get around the area on **weekends**?

Please select **one**

- in a car
- on a motorbike
- on a bicycle
- use the bus
- walking
- other

## Section 3 – You and your community

How important is it to make it easier and safer for people to ride bicycles in and around the Newtown Connections area?

**1**  
Not important

**2**  
Low importance

**3**  
Moderately important

**4**  
Important

**5**  
Very important

Please use this space for any other comments, sketches, or photos you would like to support your feedback:

1st fold here - fasten here once

2nd fold

J00XXXX

Free Post Authority Number 2199

**Absolutely Positively**  
**Wellington City Council**  
Me Heke Ki Pōneke



FREEPOST 2199  
Network Improvements - Newtown Connections [CAPO0021804]  
Wellington City Council  
PO Box 2199  
Wellington 6140