

Reference: TR 119 – 17

Location: Featherston Street, between Bunny Street and Ballance Street

Proposal: Cycle lane

Information: Wellington City Council is working to make cycling safer and more convenient for people travelling on bikes. The Urban Cycleways Programme has allocated \$1.5 million in funding for minor improvements in the central area.

Connectivity and safety are the key improvement themes identified during the working group meetings for the Wellington central area minor cycle improvements project. Provision of safe and convenient connections improves cycle accessibility and permeability in the city and reduces the crash risk. It is also an essential element for promoting cycling as a viable transport mode and encouraging people to get on a bike.

The proposed changes outlined in this report aim to improve connectivity and safety for people on bikes by providing a better cycle connection through Featherston Street between Bunny Street and Ballance Street.

Featherston Street is classified as a principal route and is a key route through the heart of the central city. It connects to Thorndon Quay and carries much of the traffic to and from the northern suburbs of Wellington and beyond. The average daily traffic volume on this section is about 14,000 vehicles per day. The speed limit on Featherston Street is 50 km/h.

Wellington City Council Transport Monitoring Surveys undertaken in March 2016 recorded 450 cyclists on Featherston Street during the morning peak (7am-9am), Monday to Friday, just south of Whitmore Street with an average of 292 cyclists during the busiest hour.

Cycle lanes are provided in both directions on Featherston Street between Thorndon Quay and Bunny Street. The level of service for people on bikes is poor between Bunny Street and Ballance Street, with no dedicated cycle lane.

We propose installing a 1.6m-wide cycle lane between Bunny Street and Ballance Street to improve cycle connectivity and safety on this popular route. The proposed changes include:

- reducing the width of the existing traffic lanes from 3.2m to at least 3.00m to make room for the cycle lane (the number of traffic lanes will remain unchanged)

- 0.5m-wide buffer zone installed outside the existing parallel parking on Featherston Street, between Bunny Street and Whitmore Street
- 1.5m of kerb will be cut back adjacent to the existing far right turn lane on Featherston Street near its intersection with the Whitmore Street to make room for the cycle lane.
- Reducing the number of angle car parking spaces outside 60-70 Featherston Street from five to four, by remarking the existing 90-degree-angle parks as 60-degree-angle parking spaces. Net parking loss: one. No other parking will be affected by this proposal.

Key Dates:

- | | |
|--|-------------------|
| 1) Advertisement in the Dominion Post Newspaper | 26 September 2017 |
| 2) Feedback period closes | 16 October 2017 |
| 3) If no objections received report sent to City Strategy Committee for approval | 23 November 2017 |
| 4) If objections are received, further consultation, amendment/s, or proceed with explanation as appropriate | |

Legal Description:

Delete from Schedule F (Metered Parking) of the Traffic Restrictions Schedule

Column One	Column Two	Column Three
Featherston Street	<i>P120 Maximum, Monday to Thursday 8am-6pm, Friday 8am-8pm, Saturday and Sunday 8am-6pm</i>	<i>West side, following the kerb line 39 metres north of its intersection with Whitmore Street (grid coordinates x= 1748925.9m, y= 5428534.8m), and extending in a northerly direction for 16 metres (six angle car parks)</i>

Add to Schedule F (Metered Parking) of the Traffic Restrictions Schedule

Column One	Column Two	Column Three
Featherston Street	<i>P120 Maximum, Monday to Thursday 8am-6pm, Friday 8am-8pm, Saturday and Sunday 8am-6pm</i>	<i>West side, following the kerb line 39 metres north of its intersection with Whitmore Street (grid coordinates x= 1748925.9m, y= 5428534.8m), and extending in a northerly direction for 13.3m (four angle car parks)</i>

Add to Schedule I (Cycle Lane) of the Traffic Restrictions Schedule

Column One	Column Two	Column Three
Featherston Street	<i>Cycle lane</i>	<i>Southbound, commencing at its intersection with Bunny Street (grid coordinates x= 1749002.2m, y= 5428666.3m) extending in a southerly direction and terminating at its intersection with Ballance Street</i>

PROPOSED TRAFFIC RESOLUTION

Prepared By: Luke Benner

(Transport Projects Engineer)

Approved By: Paul Barker

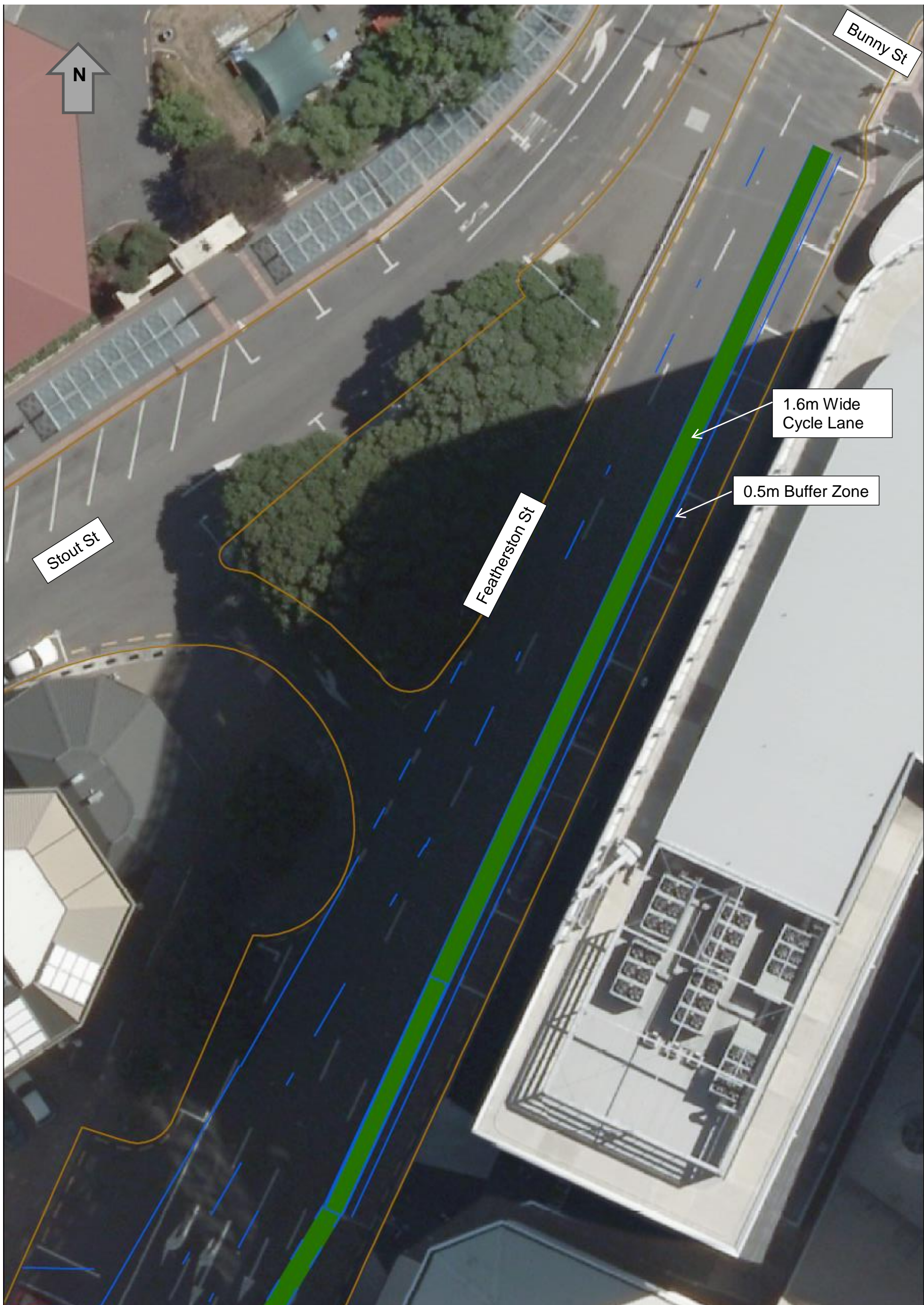
(Planning Manager Network Improvement)

Date: 20/09/17

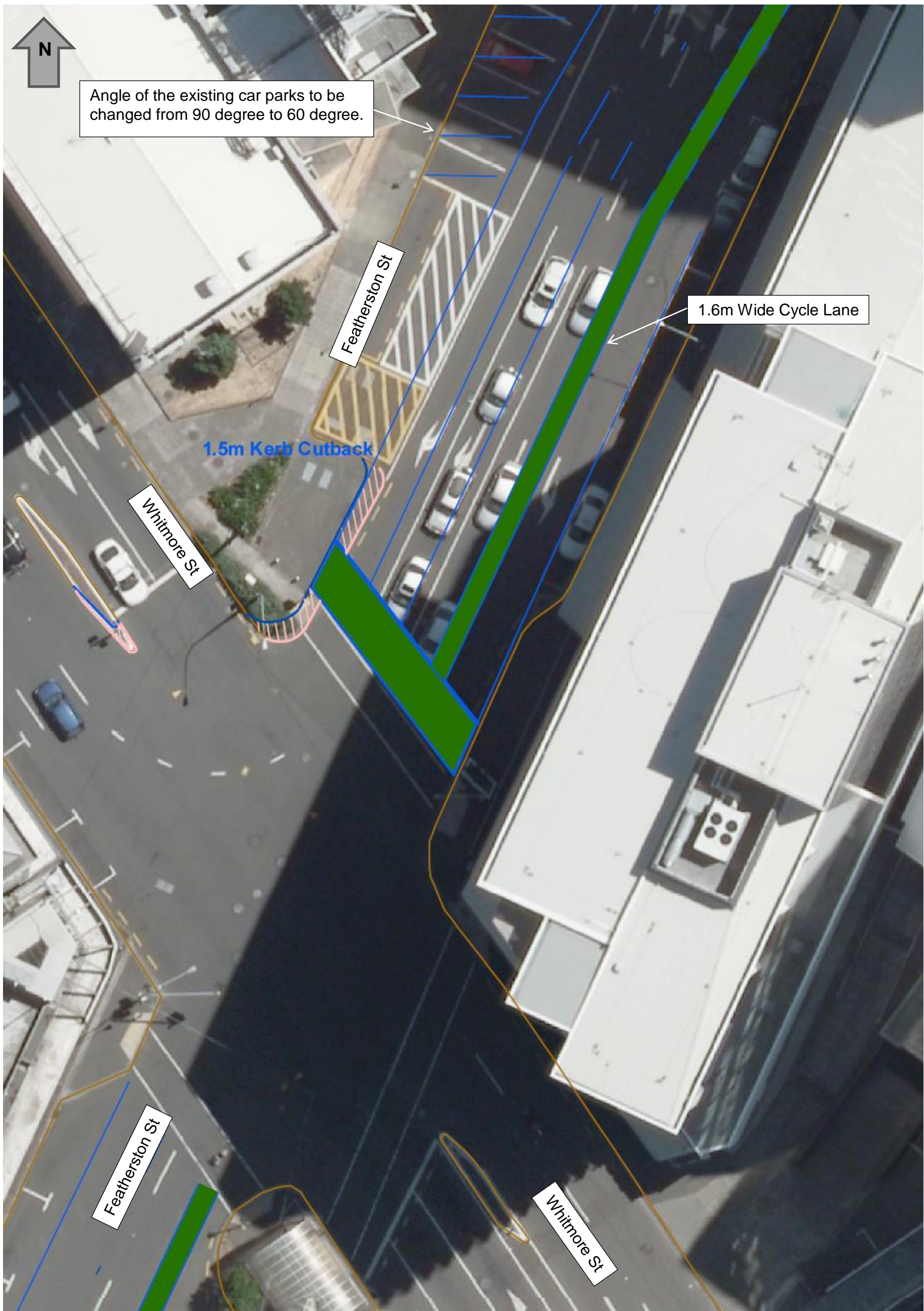
WCC Contact:

Luke Benner
Transport Projects Engineer
Wellington City Council
101 Wakefield Street / PO Box 2199,
Wellington 6140
Phone: +64 21 270 8148
Email: Luke.Benner@wcc.govt.nz

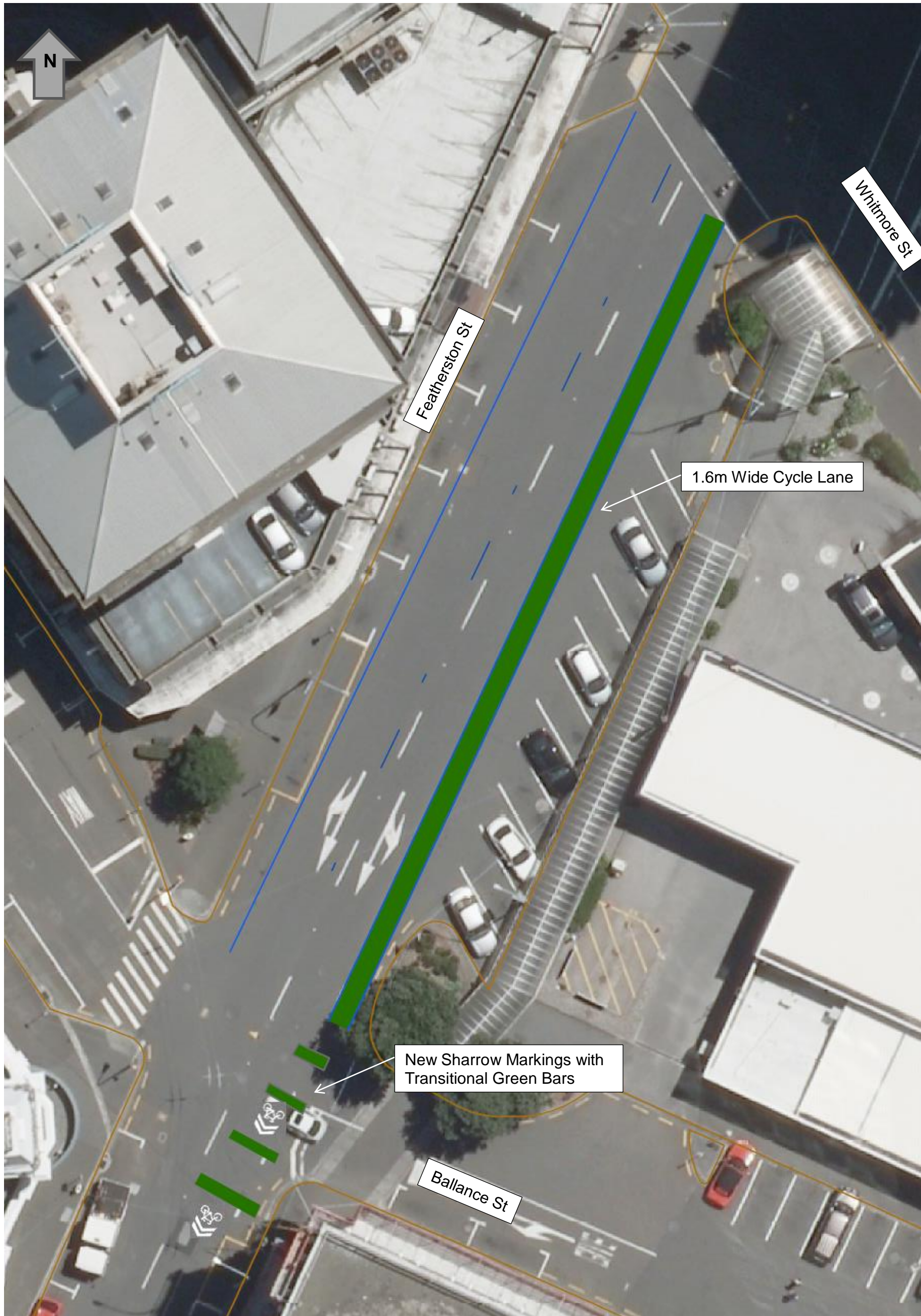
Appendix A - Traffic Resolution Plan – 1/3



Appendix A - Traffic Resolution Plan – 2/3



Appendix A - Traffic Resolution Plan – 3/3



FEEDBACK RECEIVED