

PROPOSED TRAFFIC RESOLUTION

Reference Number: TR172-17

Location: Coutts Street, Kilbirnie

Proposal: Coutts Street Cycleway Improvements

Information:

As part of creating a safer biking network, we are proposing to replace the painted, on-road bike lanes on both sides of Coutts Street between Te Whiti Street and the Tirangi Road roundabout with safer facilities.

The new-look bike paths proposed for this section of the street are part of a series of projects that will together provide safer connections between the Leonie Gill Pathway, the tunnel under the airport runway to Miramar, and the quiet route through to Rongotai Road via Te Whiti Street.

There has been a long process to get to this point, including several opportunities to provide feedback and attend open days. Along with wider community input, we worked closely with the Kilbirnie community working group this year to look at all the options.

Separated bike paths are proposed

Following more public feedback in September, and more design work, we are proposing separated bike paths next to the footpath on each side. Parking would remain where it is, and people would have a safer place to ride.

Along with whatever other feedback you have, we are keen to know whether you would prefer to see these paths built at the same level as the footpath or with a slight 50mm difference in height.

This project, and others in the final stages of development, will go a long way towards creating a connected bike network for the east. Other planned projects in Kilbirnie and Miramar, which will complement these ones and add to the local network, will either be progressed next year, or when funding allows.

The projects are all part of the city's cycleways programme, which is being planned and delivered in partnership with the Government and NZ Transport Agency. Our goal is to gradually develop a connected citywide network with facilities that will be safer and more appealing to less confident riders.

How things would change

We're proposing to:

- put in a 1.7m-wide bike path on each side of the road, at footpath level or with a small separation in height, between the footpath and parking

PROPOSED TRAFFIC RESOLUTION

- install an 800mm-wide buffer between the bike paths and parked cars
- alter the footpaths to be 2.4m wide (standard width)
- remove about 22 parking spaces overall – 15 on the northern side (from 46 to 31) and seven on the southern side (from 34 to 27)
- have the bike paths at footpath level at bus stops so it's easy for people getting on and off the bus
- move the power poles to the back of the footpath.

There will be 3.2m-wide traffic lanes in each direction.

- | | |
|---|------------------|
| 1) Advertisement in the Dominion Post Newspaper | 14 November 2017 |
| 2) Feedback period closes. | 11 December 2017 |
| 3) Report sent to City Strategy Committee for approval. | TBC |
| 4) Feedback may result in further consultation or amendment as appropriate. | |

PROPOSED TRAFFIC RESOLUTION

Reference Number: TR172-17

Location: Coutts Street, Kilbirnie

Proposal: Coutts Street Cycleway Improvements

Legal Description:

Delete from Schedule B (Restricted Parking) of the Traffic Restrictions Schedule

Coutts Street	<i>Bus Stop – At All Times</i>	<i>North side, commencing 65.5 metres east of its intersection with Tirangi Road extending in an easterly direction following the northern kerbline for 12 metres.</i>
Coutts Street	<i>Bus Stop – At All Times</i>	<i>North side, commencing from its intersection with Te Whiti Street and extending in a westerly direction following the northern kerbline for 11 metres.</i>
Coutts Street	<i>Bus Stop – At All Times</i>	<i>South side, commencing 415.5 metres west of its intersection with Tirangi Road extending in a westerly direction following the southern kerbline for 12 metres.</i>

Delete from Schedule D (No Stopping) of the Traffic Restrictions Schedule

Coutts Street	<i>No Stopping – At All Times</i>	<i>North side, commencing from its intersection with Mamari Street and extending in an easterly direction following the northern kerbline for 8.5 metres</i>
Coutts Street	<i>No Stopping – At All Times</i>	<i>North side, commencing from its intersection with Ross Street and extending in a westerly direction following the northern kerbline for 6 metres.</i>
Coutts Street	<i>No Stopping – At Times</i>	<i>South side, commencing 248.5 metres south of its intersection with Tirangi Road and extending in a westerly direction following the southern kerbline for 19 metres.</i>

PROPOSED TRAFFIC RESOLUTION

Coutts Street	<i>No Stopping – At All Times</i>	<i>South side, commencing 274 metres south of its intersection with Tirangi Road extending in a westerly direction following the southern kerbline for 17 metres</i>
Coutts Street	<i>No Stopping – At Times</i>	<i>South side, commencing 72 metres east from its intersection with Bridge Street extending in an easterly direction for 8 metres.</i>
Coutts Street	<i>No Stopping – At All Times</i>	<i>South side, commencing from its intersection with Tirangi Road and extending in westerly direction following the southern kerbline for 15.5 metres.</i>
Coutts Street	<i>No Stopping – At All Times</i>	<i>South side, commencing from its intersection with Tirangi Road and extending in easterly direction following the southern kerbline for 9 metres</i>

Add to Schedule D (No Stopping) of the Traffic Restrictions Schedule

Coutts Street	<i>No Stopping – At All Times</i>	<i>North side, commencing 31.5 metres east of its intersection with Te Whiti Street (Grid Coordinates x = 402012m, y = 797787m) and extending in an easterly direction following the northern kerbline for 17 metres.</i>
Coutts Street	<i>No Stopping – At All Times</i>	<i>North side, commencing at its intersection with Salek Street (Grid Coordinates x = 402080m, y = 797771m) and extending in an easterly direction following the northern kerbline for 20 metres.</i>
Coutts Street	<i>No Stopping – At Times</i>	<i>North side, commencing 12 metres east of its intersection with Mamari Street (Grid Coordinates x= 402131m, y = 797735m) and extending in an easterly direction following the northern kerbline for 42 metres.</i>
Coutts Street	<i>No Stopping – At All Times</i>	<i>North side, commencing 57.5 metres east of its intersection with Mamari Street (Grid Coordinates x = 402157m, y =</i>

PROPOSED TRAFFIC RESOLUTION

		<i>797695m) and extending in an easterly direction following the northern kerbline for 8 metres.</i>
Coutts Street	<i>No Stopping – At All Times</i>	<i>North side, commencing 73.5 metres east of its intersection with Mamari Street (Grid Coordinates x = 402166m, y = 797681m) and extending in an easterly direction following the northern kerbline for 8 metres.</i>
Coutts Street	<i>No Stopping – At All Times</i>	<i>North side, commencing 98 metres east of its intersection with Mamari Street (Grid Coordinates x = 402174m, y = 797669m) and extending in an easterly direction following the northern kerbline for 8.5 metres.</i>
Coutts Street	<i>No Stopping – At All Times</i>	<i>North side, commencing 111 metres east of its intersection with Mamari Street (Grid Coordinates x = 402181m, y = 797658m) and extending in an easterly direction following the northern kerbline for 7 metres.</i>
Coutts Street	<i>No Stopping – At All Times</i>	<i>North side, commencing 123 metres east of its intersection with Mamari Street (Grid Coordinates x = 402188m, y = 797647m) and extending in an easterly direction following the northern kerbline for 7 metres.</i>
Coutts Street	<i>No Stopping – At All Times</i>	<i>North side, commencing 167 metres east of its intersection with Mamari Street (Grid Coordinates x = 402195m, y = 797637m) and extending in an easterly direction following the northern kerbline for 19 metres.</i>
Coutts Street	<i>No Stopping – At All Times</i>	<i>North side, commencing 201 metres east of its intersection with Mamari Street (Grid Coordinates x = 402219m, y = 797599m) and extending in an easterly direction following the northern kerbline for 11 metres.</i>

PROPOSED TRAFFIC RESOLUTION

Coutts Street	<i>No Stopping – At All Times</i>	<i>North side, commencing 217 metres east of its intersection with Mamari Street (Grid Coordinates x = 402238m, y = 797572m) and extending in an easterly direction following the northern kerbline for 13 metres.</i>
Coutts Street	<i>No Stopping – At All Times</i>	<i>North side, commencing 241 metres east of its intersection with Mamari Street (Grid Coordinates x = 402250m, y = 797561m) and extending in an easterly direction following the northern kerbline for 7 metres.</i>
Coutts Street	<i>No Stopping – At All Times</i>	<i>North side, commencing 260 metres east of its intersection with Mamari Street (Grid Coordinates x = 402272m, y = 797549m) and extending in an easterly direction following the northern kerbline for 5 metres.</i>
Coutts Street	<i>No Stopping – At All Times</i>	<i>North side, commencing 20 metres east of its intersection with Tirangi Road (Grid Coordinates x = 402325m, y = 797516m) and extending in an easterly direction following the northern kerbline for 9 metres.</i>
Coutts Street	<i>No Stopping – At All Times</i>	<i>North side, commencing 50 metres east of its intersection with Tirangi Road (Grid Coordinates x = 402349m, y = 797498m) and extending in an easterly direction following the northern kerbline for 8 metres.</i>
Coutts Street	<i>No Stopping – At All Times</i>	<i>North side, commencing 62 metres east of its intersection with Tirangi Road (Grid Coordinates x = 402360m, y = 797490m) and extending in an easterly direction following the northern kerbline for 13 metres.</i>
Coutts Street	<i>No Stopping – At All Times</i>	<i>North side, commencing 26.5 metres east of its intersection with Bridge Street (Grid Coordinates x = 402417m, y = 797546m) and extending in an</i>

PROPOSED TRAFFIC RESOLUTION

easterly direction following the northern kerbline for 7 metres.

Coutts Street	<i>No Stopping – At All Times</i>	<i>South side, commencing 24 metres east of its intersection with Te Whiti Street (Grid Coordinates x = 402002m, y = 797779) and extending in an easterly direction following the southern kerbline for 16 metres.</i>
Coutts Street	<i>No Stopping – At All Times</i>	<i>South side, commencing 46 metres east of its intersection with Te Whiti Street (Grid Coordinates x = 402025m, y = 797733m) and extending in an easterly direction following the southern kerbline for 6 metres.</i>
Coutts Street	<i>No Stopping – At All Times</i>	<i>South side, commencing 57 metres east of its intersection with Te Whiti Street (Grid Coordinates x = 402035m, y = 797771m) and extending in an easterly direction following the southern kerbline for 17 metres.</i>
Coutts Street	<i>No Stopping – At All Times</i>	<i>South side, commencing at its intersection with Salek Street (Grid Coordinates x = 402066m, y = 797763m) and extending in an easterly direction following the southern kerbline for 17 metres.</i>
Coutts Street	<i>No Stopping – At All Times</i>	<i>South side, commencing 22 metres east of its intersection with Salek Street (Grid Coordinates x = 402088m, y = 797757m) and extending in an easterly direction following the southern kerbline for 20 metres.</i>
Coutts Street	<i>No Stopping – At All Times</i>	<i>South side, commencing 50 metres east of its intersection with Salek Street (Grid Coordinates x = 402111m, y = 797744m) and extending in an easterly direction following the southern kerbline for 42 metres.</i>

PROPOSED TRAFFIC RESOLUTION

Coutts Street	<i>No Stopping – At All Times</i>	<i>South side, commencing 49 metres east of its intersection with Mamari Street (Grid Coordinates x = 402 146m, y = 797695m) and extending in an easterly direction following the southern kerbline for 7 metres.</i>
Coutts Street	<i>No Stopping – At All Times</i>	<i>South side, commencing 75.5 metres east of its intersection with Mamari Street (Grid Coordinates x = 402 153m, y = 797684m) and extending in an easterly direction following the southern kerbline for 7 metres.</i>
Coutts Street	<i>No Stopping – At All Times</i>	<i>South side, commencing 87 metres east of its intersection with Mamari Street (Grid Coordinates x = 402 159m, y = 797674m) and extending in an easterly direction following the southern kerbline for 7 metres.</i>
Coutts Street	<i>No Stopping – At All Times</i>	<i>South side, commencing 98.5 metres east of its intersection with Mamari Street (Grid Coordinates x = 402 165m, y = 797665m) and extending in an easterly direction following the southern kerbline for 7 metres.</i>
Coutts Street	<i>No Stopping – At All Times</i>	<i>South side, commencing 118.5 metres east of its intersection with Mamari Street (Grid Coordinates x = 402 176m, y = 797648m) and extending in an easterly direction following the southern kerbline for 19 metres.</i>
Coutts Street	<i>No Stopping – At All Times</i>	<i>South side, commencing 142 metres east of its intersection with Mamari Street (Grid Coordinates x = 402 189m, y = 797627m) and extending in an easterly direction following the southern kerbline for 7 metres.</i>

PROPOSED TRAFFIC RESOLUTION

Coutts Street	<i>No Stopping – At All Times</i>	<i>South side, commencing 153.5 metres east of its intersection with Mamari Street (Grid Coordinates x = 402196m, y = 797617m) and extending in an easterly direction following the southern kerbline for 7 metres.</i>
Coutts Street	<i>No Stopping – At All Times</i>	<i>South side, commencing 165 metres east of its intersection with Mamari Street (Grid Coordinates x = 402202m, y = 797608m) and extending in an easterly direction following the southern kerbline for 11 metres.</i>
Coutts Street	<i>No Stopping – At All Times</i>	<i>South side, commencing 190 metres east of its intersection with Mamari Street (Grid Coordinates x = 402217m, y = 797586m) and extending in an easterly direction following the southern kerbline for 7 metres.</i>
Coutts Street	<i>No Stopping – At All Times</i>	<i>South side, commencing 201.5 metres east of its intersection with Mamari Street (Grid Coordinates x = 402224m, y = 797577m) and extending in an easterly direction following the southern kerbline for 21 metres.</i>
Coutts Street	<i>No Stopping – At All Times</i>	<i>South side, commencing 235.5 metres east of its intersection with Mamari Street (Grid Coordinates x = 402245m, y = 797553m) and extending in an easterly direction following the southern kerbline for 23 metres.</i>
Coutts Street	<i>No Stopping – At All Times</i>	<i>South side, commencing 271 metres east of its intersection with Mamari Street (Grid Coordinates x = 402275m, y = 797532m) and extending in an easterly direction following the southern kerbline to its intersection with Tirangi Road.</i>

PROPOSED TRAFFIC RESOLUTION

Coutts Street	<i>No Stopping – At All Times</i>	<i>South side, commencing 18 metres east of its intersection with Tirangi Road (Grid Coordinates x = 402315m, y = 797506m) and extending in an easterly direction following the southern kerbline for 13 metres.</i>
Coutts Street	<i>No Stopping – At All Times</i>	<i>South side, commencing 54 metres east of its intersection with Tirangi Road (Grid Coordinates x = 402348m, y = 797489m) and extending in an easterly direction following the southern kerbline for 7 metres.</i>
Coutts Street	<i>No Stopping – At All Times</i>	<i>South side, commencing 65.5 metres east of its intersection with Tirangi Road (Grid Coordinates x = 402357m, y = 797843m) and extending in an easterly direction following the southern kerbline for 7 metres.</i>
Coutts Street	<i>No Stopping – At All Times</i>	<i>South side, commencing 81.5 metres east of its intersection with Tirangi Road (Grid Coordinates x = 402372m, y = 797473m) and extending in an easterly direction following the southern kerbline for 15 metres.</i>
Coutts Street	<i>No Stopping – At All Times</i>	<i>North side, commencing at its intersection with Bridge Street (Grid Coordinates x = 402388m, y = 797463m) and extending in an easterly direction following the northern kerbline for 7 metres.</i>
Coutts Street	<i>No Stopping – At All Times</i>	<i>North side, commencing 11.5 metres east of its intersection with Bridge Street (Grid Coordinates x = 402399m, y = 797456m) and extending in an easterly direction following the northern kerbline for 7 metres.</i>

PROPOSED TRAFFIC RESOLUTION

Add to Schedule I (Cycle Lanes) of the Traffic Restrictions Schedule

Coutts Street	<i>Cycle Path</i>	<i>North side, commencing 18.5 metres east of its intersection with Te Whiti Street (Grid Coordinates x = 401993m, y = 717794m) and extending in an easterly direction following the northern kerbline for 56 metres.</i>
Coutts Street	<i>Cycle Path</i>	<i>North side, commencing 12 metres east of its intersection with Salek Street (Grid Coordinates x = 402074m, y = 797773m) and extending in an easterly direction following the northern kerbline for 52 metres.</i>
Coutts Street	<i>Cycle Path</i>	<i>North side, commencing 12 metres east of its intersection with Mamari Street (Grid Coordinates x = 402133m, y = 797736m) and extending in an easterly direction following the northern kerbline for 233 metres.</i>
Coutts Street	<i>Cycle Path</i>	<i>North side, commencing 35 metres east of its intersection with Tirangi Road (Grid Coordinates x = 402404m, y = 797464) and extending in an easterly direction following the northern kerbline for 55 metres.</i>
Coutts Street	<i>Cycle Lane</i>	<i>North side, commencing 10 metres east of its intersection with Bridges Street (Grid Coordinates x = 402337m, y = 797508m) and extending in an easterly direction following the northern kerbline for 8 metres.</i>
Coutts Street	<i>Cycle Path</i>	<i>South side, commencing 41.5 metres east of its intersection with Te Whiti Street (Grid Coordinates x = 402018m, y = 797773m) and extending in an easterly direction following the southern kerbline for 344</i>

PROPOSED TRAFFIC RESOLUTION

Coutts Street

Cycle Path

metres.

South side, commencing 43 metres east of its intersection with Tirangi Road (Grid Coordinates $x = 402335\text{m}$, $y = 797493\text{m}$) and extending in an easterly direction following the southern kerbline for 93 metres.

PROPOSED TRAFFIC RESOLUTION

Absolutely Positively
Wellington City Council
Me Heke Ki Pōneke

Prepared By : Simon Ingamells

**(Design Team Leader)
(Planning Manager Network
Improvement)**

Approved By : Paul Barker

Date: 13 November 2017

WCC Contact:

Daniel Cairncross
Principal Transport Engineer
Transport and Waste Operations
Wellington City Council
101 Wakefield Street / PO Box 2199,
Wellington 6140
Phone: 027 803 0340
Email: Daniel.Cairncross@wcc.govt.nz

PROPOSED TRAFFIC RESOLUTION

Absolutely Positively
Wellington City Council
Me Heke Ki Pōneke



A. Updated Drawing Title		SI	SP/10/1
Designed	DM	DR/10/1	DR/10/1
Drawn	PG	DR/10/1	DR/10/1
Reviewed	CL	DR/10/1	DR/10/1
Approved	SI	DR/10/1	DR/10/1

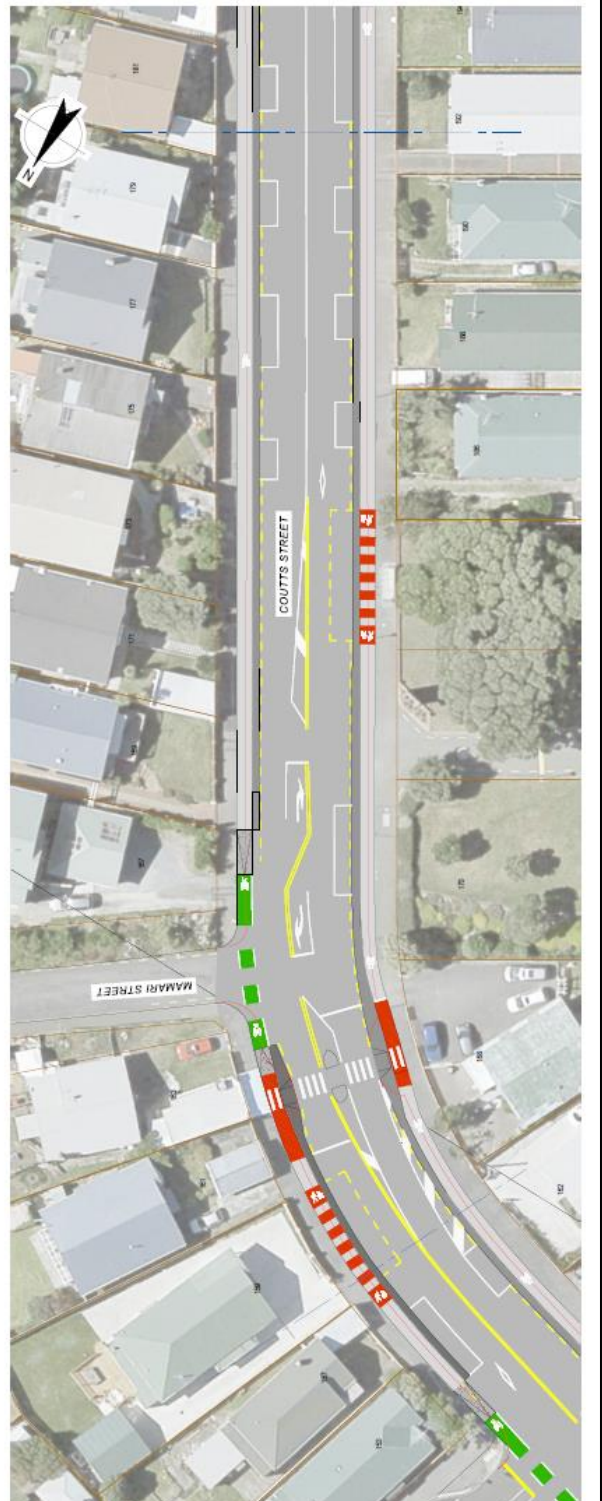
Absolutely Positively Wellington City Council
Me Heke Ki Pōneke

Project Title
**Eastern Suburbs Cycleways
Kilbirnie Connections**

Draw Title
**Traffic Resolution Plan
Coutts Street
Sheet 1 of 3**

1:200 1:500 1:1000 1:2000 1:5000 1:10000
100-25 Māori Street, Wellington 6011 454-4 334 3335
callcore.co.nz

Scale (A1 Original) 1:200 (A3) 1:500
0 2.5 5 10 15
Project No. 709549.002 Sheet TR-10-1 A



PROPOSED TRAFFIC RESOLUTION

Absolutely Positively
Wellington City Council
Me Heke Ki Pōneke



1. Updated following review	SI	21/1/17
Revised	SI	21/1/17
Designated	SI	21/1/17
Engineered	SI	21/1/17
Reviewed	SI	21/1/17
Approved	SI	21/1/17

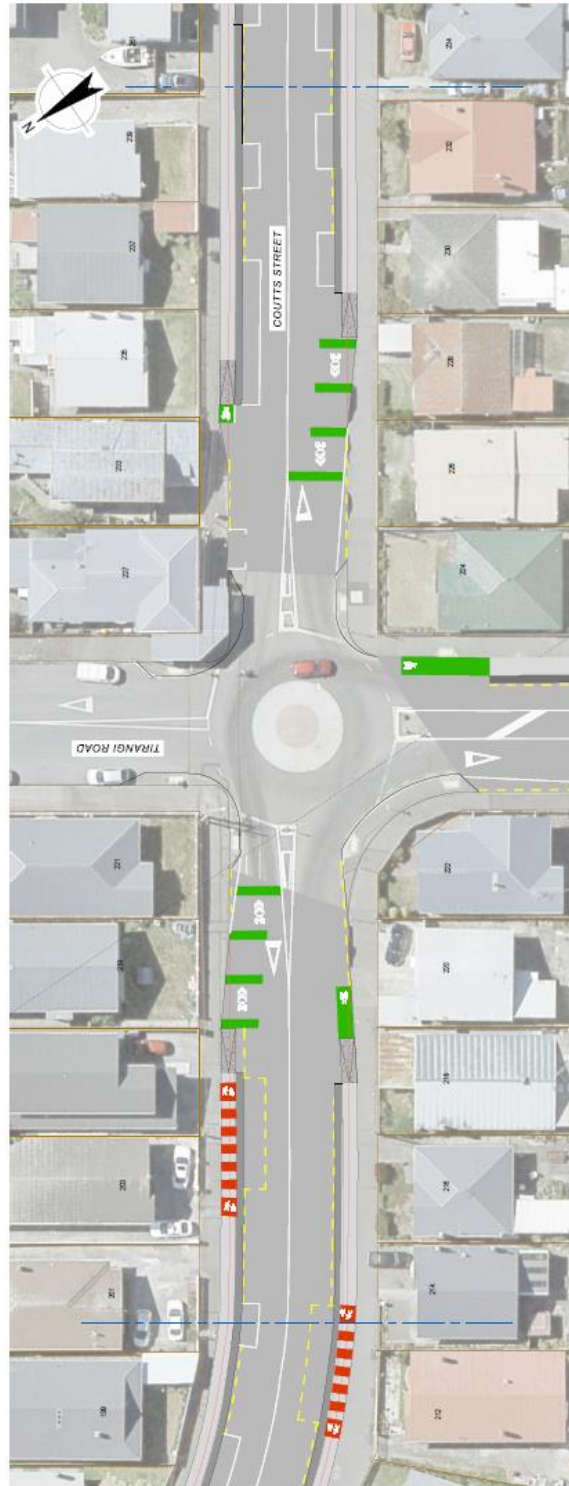
Absolutely Positively Wellington City Council
Me Heke Ki Pōneke

Project Title
Eastern Suburbs Cycleways
Kilbirnie Connections

Sheet Title
Traffic Resolution Plan
Coutts Street
Sheet 2 of 3

Scale (At Original) 1:250 (A3) 1:500 (A4)

Project File
709549_002 TR10-2 A



PROPOSED TRAFFIC RESOLUTION

Absolutely Positively
Wellington City Council

Me Heke Ki Pōneke



A. Location following review

Revision	SI	Date
Revised	02/11/17	
Original	02/11/17	
Design	02/11/17	
Reviewed CL	02/11/17	
Approved SI	02/11/17	

Work is intended to be used as a guide only. It is not intended to be used as a legal document. The user of this document is advised to seek professional advice as to its use.

Absolutely Positively
Wellington City Council

Project Title
Me Heke Ki Pōneke
Eastern Suburbs Cycleways
Kilbirnie Connections

Sheet Title
Traffic Resolution Plan
Coutts Street
Sheet 3 of 3

Scale 1:500
100-120 Mair Street, Wellington 6111
04-4 234 2229

Scale (As Original) 1:250 1:500 1:1000

0 5 10 15

Project No. 709549.002 Sheet TR10-3 A

