

PROPOSED TRAFFIC RESOLUTION

Reference Number: TR29-18

Location: Evans Bay Parade, Rongotai Road, Bay Road (Kilbirnie)

Proposal: To provide a new cycleway on Evans Bay Parade together with new bus stops to create a bus hub in Kilbirnie as part of Wellington's new bus network.

Information:

Background

Wellington City Council has been working closely with Greater Wellington Regional Council to create a bus hub in Kilbirnie to serve new services starting in July 2018. This work has been coordinated to provide improvements for both public transport and cycling through the Kilbirnie centre.

Cycling

As part of creating a safer biking network, we are proposing to develop a dedicated cycle path next to the footpath on Evans Bay Parade, between Cobham Drive (SH1) and Kilbirnie Crescent. Protected facilities are proposed for the section of Evans Bay Road between Bay Road and Onepu Road.

The proposal is to separate the bike facility from moving traffic and protect it with a raised buffer. This will still allow motorists to be able to park against a kerb and use the buffer area to safely get in and out of their cars.

The new cycling facilities are part of a series of projects that will together provide safer connections to a number of places including Crawford Road, Rongotai Road, Cobham Drive, Newtown and Evans Bay Parade on the northern side of State Highway 1.

There has been a long process leading up to this point, including several opportunities for the public to attend open days and provide feedback. Along with seeking wider community input, we have worked closely with a Kilbirnie community working group to look at a number of options. Following additional public feedback in September, this proposed scheme was selected and has been refined through recent design work.

This project, and others being developed, will go a long way towards creating a connected bike network in the eastern suburbs. The other projects, in Kilbirnie and Miramar, being planned to complement this one and add to the local network will be progressed later this year, or as funding allows.

The projects are all part of the city's cycleways programme, which is being planned and delivered in partnership with the Government and NZ Transport Agency. Our goal is to gradually develop a citywide network with facilities that will be safer and more appealing to less-confident riders.

Further information relating to the consultation and design process for the cycleways can be found in the Design Report.

The primary impacts on Evans Bay Parade between SH1 and Kilbirnie Crescent, are:

- The existing shared path on the St Patrick's College side, between Cobham Drive and Kemp Street, would be widened to create a designated 2.5m-wide footpath and

- a 2.5m-wide two-way bike path. There would be a 1m-wide buffer between the bike path and the road.
- This would continue along Evans Bay Parade between Kemp Street and Kilbirnie Crescent except the footpath would be slightly narrower (2m wide).
 - Along this part of Evans Bay Parade (section 1), there would be 72 car parks in total (reduced from the 88 currently provided). 57 of these car parks would be on the Kilbirnie Park side (reduced from the 65 spaces currently provided). There would be 15 spaces on the St Patrick's College side (reduced from the 23 spaces currently provided).
 - Off-peak parking in the bus bays outside St Patrick's College would be retained.
 - Traffic lanes would be slightly wider (3m to 3.2m) between Kilbirnie Crescent and Kemp Street, and reduced (4m to 3.2m) between Kemp Street and Cobham Drive.
 - The kerb along this whole section, on the St Patrick's College side, would be moved out to make room for the bike path and footpath.
 - The kerb on the Kilbirnie Park side would be recessed towards the trees by up to 1.4m to retain the car parking along this stretch.
 - The painted median strip between Kilbirnie Crescent and Kemp Street would be removed.
 - A raised platform would be installed on Kemp Street, at the intersection with Evans Bay Parade, to make crossing here easier for people on bikes and on foot.
 - The crossing point and traffic islands closest to St Patrick's College (north of Kemp Street) would be retained.
 - The crossing point and traffic islands south of Kemp Street would be removed.

The primary impacts on Bay Road, Rongotai Road and Evans Bay Parade between Kilbirnie Crescent and Rongotai Road are:

- Sharrow road markings would be painted on the one-way slip road (opposite Kilbirnie Crescent) to connect with a short section of 2m-wide protected bike path at road level, through to the proposed bike paths at the Rongotai Road intersection.
- New green stop boxes would be installed at the intersection of Onepu Road and Rongotai Road, and also at the intersection of Rongotai Road and Bay Road.
- We are considering improving the traffic lights on Rongotai Road (outside Pak'nSave) by creating a separate bike crossing signal to allow people on bikes to ride diagonally across to Evans Bay Parade (on the KFC corner) and join the proposed new bike path behind the proposed bus shelters.
- A 2m-wide bike path with a 500mm-wide buffer would go behind the proposed bus shelters on the KFC side, between Rongotai Road and Kilbirnie Crescent.
- On the slip road and adjacent section of Evans Bay Parade through to Rongotai Road, 13 new angle car parks and 1 new parallel car park would replace the existing 20 parallel car parks.
- At the intersection of Rongotai Road and Onepu Road there would be improvements for pedestrians to make crossing easier.
- At the intersection of Evans Bay Parade and Bay Road there would be a new crossing for bikes and some adjustments to traffic lanes.
- Overall in this area there would be 50 car parking spaces (currently 68 parking spaces) from both the proposed Cycleway and Bus Hub proposals.

Buses.

The existing bus services through Kilbirnie use bus stops on Rongotai Road and Bay Road. For some time there has been limited opportunity to improve the facilities in this area for waiting passengers because of limited space and the conflict with a number of driveways. In July last year public consultation was carried out to look at options for the location of bus stops in the area. This was also driven by the need to cater for new services that would result from the bus services review carried out by the Greater Wellington Regional Council.

The new bus network through this area requires facilities to cater for connections between core high frequency services and local connecting buses. As a result of consultation the public showed a preference for a new bus hub to be constructed on Evans Bay Parade. This location provides the space to cater for the new bus operations and an area to provide the supporting infrastructure. It is close to the shopping centre and community facilities on Kilbirnie Crescent. The location is also on a more direct route for the high frequency services that head to and from the city through Hataitai. From this decision on the hub location, detailed design work has been carried out to understand the changes required to enable the proposal to be implemented.

There are seven bus hubs across the city. The hubs are an integral part of the new network providing connection points for core high frequency services and local services.

A map of the new network through Kilbirnie, showing routes and frequencies, is provided below.



PROPOSED TRAFFIC RESOLUTION

The planned frequency of core high frequency routes proposed to travel through the hub (dark blue and green routes above) is:

Weekday Peak	Bus every 10 minutes
Weekday Daytime	Bus every 10 minutes
Weekday Evening	Bus every 15-30 minutes
Saturday	Bus every 15 minutes daytime and 30 minutes evening
Sunday	Bus every 15 minutes daytime and 30 minutes evening

Other services using the bus hub at Kilbirnie would operate 30-60 minutes all day with increased frequency at peak times.

Proposed bus stops

Currently the existing bus services use bus stops on Rongotai Road and Bay Road. The bus stops next to and opposite Commonsense Organics will be replaced by bus stops in the proposed new hub location on Evans Bay Parade.

Evans Bay Parade stops

The proposed bus stop on the northern side of Evans Bay Parade will be positioned against an extended island and footpath providing for two buses and a waiting shelter. Core high frequency services on Route 2 from the city will be able to connect with local services at the stop.

On the southern side of Evans Bay Parade, outside KFC, it is proposed to remove the all-day parking of approximately 10 car spaces and replace it with the main bus stop for city-bound high frequency services on Route 2. This stop will also accommodate local buses connecting with the core high frequency services and provide for some layover space for those local buses waiting to return to service.

A proposed second smaller stop outside Mobil will provide for high frequency services on Route 3. Both stops would have new bus shelters so passengers can wait in comfort, with travel information, seating, lighting and CCTV for added safety.

Existing Bay Road stop

The bus stop on Bay Road next to Commonsense Organics is proposed to be removed and replaced with a no stopping restriction to improve the efficiency of buses travelling through this area. On the opposite side of the road it is proposed to change the taxi stand and parallel parking into angle parking. With a decrease in bus activity along this section of Bay Road, there is an opportunity to reconfigure the street layout to reflect the main shopping centre and better connect the new bus stop facilities on Evans Bay Parade. Included in these improvements will be a covered walkway on the Mobil side of the street to connect with the new bus stops on Evans Bay Parade. Reconfiguring the parking will create an additional 4 car parking spaces on this section of Bay Road.

Existing Rongotai Road stops

The existing pair of bus stops on the south side of Rongotai Road, between Bay Road and Onepu Road, are proposed to be removed. It is proposed to convert the front bus stop outside the dairy to a taxi stand being relocated from Bay Road. This will provide a convenient location in the shopping centre for taxi users and provide easier access to various destinations beyond. The second stop outside the ANZ carpark is proposed to be converted to P60 parking. Because buses will no longer use this section of Rongotai Road there is scope to add additional car parking. It is therefore proposed to add two additional parks on the north side of Rongotai Road heading toward Onepu Road, and extend the existing P60 zone outside Commonsense Organics.

This would provide an additional 4 car parking spaces on this section of Rongotai Road and help to offset the loss of all day spaces on Evans Bay Parade.

On Rongotai Road between Bay Road and Crawford Road, the bus stops outside Kilbirnie Sports and Nailed It will be retained. However to improve the ability of buses to safely access the stop and pull parallel to the kerb it is proposed to remove one P60 car parking space on the approach to the bus stops.

In support of the bus stop changes and introduction of cycle facilities, it is also proposed to make improvements at the two main intersections of Evans Bay Parade/Bay Road and Evans Bay Parade/Onepu Road. The changes will provide greater accessibility for pedestrians in and around the area, particularly allowing safe and easy access to the new bus stops on Evans Bay Parade.

Greater Wellington will manage the installation of infrastructure at the new location in consultation with Wellington City Council ahead of the new bus network going live in July 2018.

Consultation

Greater Wellington Regional Council consulted with the public during June and July 2017 on the location of the new hub and associated bus stops. From that consultation there was support for moving bus stops from Rongotai Road to Evans Bay Parade.

The consultation process commenced with a short 'heads-up' awareness campaign that consultation on the bus hubs was coming. This was followed by a number of pro-active steps to ensure the effectiveness of the consultation including:

- Emails to all affected residents associations;
- Flyers or posters to all local community centres;
- Flyers and posters in local supermarkets;
- Ambassadors handing out flyers and talking to the public at bus stops;
- Offers to meet any residents associations and interest groups who wanted to discuss the options;
- Presentation at public Council meetings;
- Information on both Councils websites;
- Social media messages;
- Providing 3 different ways for submitters to provide feedback.

Respondents were asked to rank their preferences 1, 2 and, 3. They were also asked to provide further information relating to their demographics, how regularly they used buses and where they live. In total there were 7500 views of the information on the website, with 244 respondents.

Targeted consultation was undertaken in both Kilbirnie and Miramar. This was done to ensure that those communities and commuters most affected were aware of the consultation taking place.

Public consultation outcome and analysis

Kilbirnie:

Evans Bay Parade was the preferred bus hub site (with 65.6% of respondents stating it as their 1st preference).

This option gained majority support from:

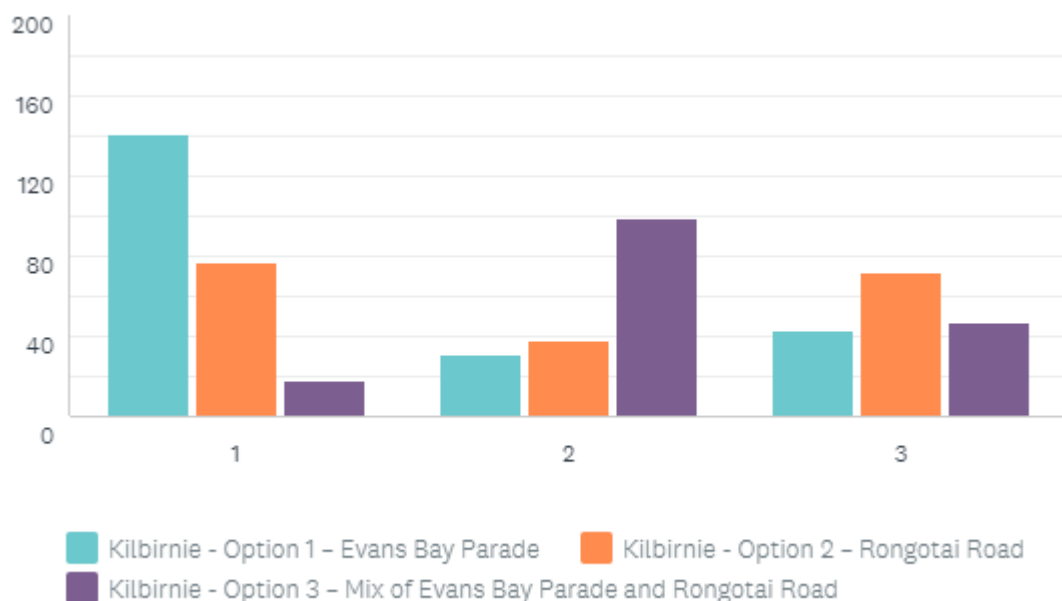
- People travelling through and/or connecting from Miramar
- People getting to work, school or university
- People aged between 18 and 64 years.

Many comments suggested a preference based on avoiding the clutter and congestion currently experienced on Rongotai Road.

There were many comments on the Evans Bay Parade option being contingent on the provision of adequate shelter, including shelter over the walk to and from the shopping area in Bay Road.

The option of improving facilities at the existing stops on Rongotai Rd was the preferred option for people 65yrs+ and (by a small margin) people living in Kilbirnie. This and other data suggests that 65yrs+ respondents, who are resident in the area and primarily use public transport for shopping and appointments would, prefer a hub nearer to the Kilbirnie shops.

A third option on separating the improvements between Rongotai Road and Evans Bay was least favoured by respondents.



PROPOSED TRAFFIC RESOLUTION

Absolutely Positively
Wellington City Council

Me Heke Ki Pōneke

Having considered the feedback from that consultation it was considered Evans Bay Parade provided the best location to enable improvements to be made for public transport users and best suited the operational requirements of the new bus services.

More recent consultation by the Greater Weln Regional Council following more detail design work on a scheme for Evans Bay Parade and the remaining bus stops on Rongotai Road, show the public is still generally supportive of the bus stop changes.

- | | |
|--|------------------|
| 1) Advertisement in the Dominion Post Newspaper | 20 February 2018 |
| 2) Feedback period closes. | 19 March 2018 |
| 3) If no objections received report sent to City Strategy Committee for approval | 19 April 2018 |
| 4) If objections are received, further consultation, amendment/s, or proceed with explanation as appropriate | |

PROPOSED TRAFFIC RESOLUTION

Reference Number: TR29-18

Location: Evans Bay Parade, Rongotai Road, Bay Road (Kilbirnie)

Proposal: To provide a new cycleway on Evans Bay Parade together with new bus stops to create a bus hub in Kilbirnie as part of Wellington's new bus network.

Legal Description:

Delete from Schedule A (Time Limited) of the Traffic Restrictions Schedule

Rongotai Road	<i>P60 – Monday to Saturday 8:00am to 6:00pm</i>	<i>North side, commencing 63 metres east of its intersection with Crawford Road (Grid coordinates $x = 750126.9$ $y = 5424435.3$) and extending in an easterly direction following the northern kerbline for 10.9 metres.</i>
Rongotai Road	<i>P60 – Monday to Saturday 8:00am to 6:00pm</i>	<i>South side, commencing 32 metres east of its intersection with Childers Terrace (Grid coordinates $x=5012436.4$ $y = 5424422.8$) and extending in an easterly direction following the southern kerbline for 6 metres.</i>
Rongotai Road	<i>P60 – Monday to Saturday 8:00am to 6:00pm</i>	<i>North side, commencing 12 metres east of its intersection with Bay Road and extending in an easterly direction following the northern kerbline for 20 metres.</i>

Delete from Schedule B (Class Restricted) of the Traffic Restrictions Schedule

Bay Road	<i>Taxi Stand</i>	<i>West side, commencing 3 metres north of its intersection with Rongotai Road and extending in a northerly direction following the western kerbline for 25.5 metres.</i>
Bay Road	<i>Bus Stop – At All Times</i>	<i>East side, commencing 11 metres east of its intersection with Rongotai Road and extending in a northerly direction following the eastern kerbline for 31 metres.</i>

PROPOSED TRAFFIC RESOLUTION

Absolutely Positively
Wellington City Council

Me Heke Ki Pōneke

Rongotai Road	<i>Bus Stop – At All Times</i>	<i>South side, commencing 23.5 metres east of its intersection with Bay Road and extending in an easterly direction following the southern kerbline for 15 metres.</i>
Rongotai Road	<i>Bus Stop – At All Times</i>	<i>South side, commencing 45.5 metres east of its intersection with Bay Road and extending in an easterly direction following the southern kerbline for 21.5 metres.</i>
Evans Bay Parade	<i>Bus Stop – Monday to Friday, 8:30am - 9:00am, 3:00pm - 3:30pm</i>	<i>East side, commencing 158 metres north of its intersection with Kemp street (grid coordinates x= 1,750,285.3m, y= 5, 424,671.2m) and extending in a northerly direction following the eastern kerbline for 12 metres.</i>

Delete from Schedule D (No Stopping) of the Traffic Restrictions Schedule

Evans Bay Parade	<i>No Stopping – At All Times</i>	<i>East side, commencing 30.5 metres from its intersection with Kemp Street and extending in a southerly direction following the eastern kerbline for 36 metres.</i>
Evans Bay Parade	<i>No Stopping – At All Times</i>	<i>East side, commencing 35 metres south of its intersection with Cobham Drive (grid coordinates x= 1,750,309.8m, y= 5,424,990.3m) and extending in a southerly direction following the eastern kerbline for 7 metres.</i>
Evans Bay Parade	<i>No Stopping – At All Times</i>	<i>East side, commencing 70.5 metres from its intersection with Kemp Street and extending in a southerly direction following the eastern kerbline for 17.5 metres.</i>
Evans Bay Parade	<i>No Stopping – At All Times</i>	<i>East side, commencing from its intersection with Kemp Street and extending in northerly direction following the eastern kerbline for 14 metres.</i>

PROPOSED TRAFFIC RESOLUTION

Evans Bay Parade	<i>No Stopping – At All Times</i>	<i>East side, commencing from its intersection with Kemp Street and extending in a southerly direction following the eastern kerbline for 16 metres.</i>
Evans Bay Parade	<i>No Stopping – At All Times</i>	<i>West side, commencing 87 metres north of the prolongation of the northern kerbline of Kemp Street (Grid coordinates x= 1750273.9 m, y= 5424671.8 m), and extending in a southwesterly direction following the southern kerbline for 5 metres.</i>
Bay Road	<i>No Stopping – At All Times</i>	<i>West side, commencing 28.5 metres west of its intersection with Rongotai Road and extending in a northerly direction following the western kerbline for 18.5 metres.</i>
Rongotai Road	<i>No Stopping – At All Times</i>	<i>South side, commencing at its intersection with Bay Road and extending in an easterly direction following the southern kerbline for 12 metres.</i>
Rongotai Road	<i>No Stopping – At All Times</i>	<i>South side, commencing 83 metres east of its intersection with Bay Road and extending in an easterly direction following the southern kerbline for 15.5 metres to its intersection with Onepu Road.</i>
Rongotai Road	<i>No Stopping – At All Times</i>	<i>North side, commencing 4.5 metres east of its intersection with Bay Road and extending in an easterly direction following the northern kerbline for 7.5 metres.</i>

Add to Schedule A (Time Limited) of the Traffic Restrictions Schedule

Bay Road	<i>P30 – Monday to Saturday, 8:00am - 6:00pm.</i>	<i>West side, commencing 11 metres north of its intersection with Rongotai Road (Grid Coordinates x = 401558m, y = 798154m) and extending in a northerly direction following the western kerbline for 14 metres.</i>
Bay Road	<i>P30 – Monday to Saturday, 8:00am -</i>	<i>West side, commencing 50 metres north of its intersection</i>

PROPOSED TRAFFIC RESOLUTION

Absolutely Positively
Wellington City Council

Me Heke Ki Pōneke

	6:00pm.	with Rongotai Road (Grid Coordinates $x = 401568m$, $y = 798193m$) and extending in a northerly direction following the western kerbline for 10 metres.
Rongotai Road	P60 – Monday to Saturday 8:00am to 6:00pm	North side, commencing 63 metres east of its intersection with Crawford Road (Grid coordinates $x = 750126.9$ $y = 5424435.3$) and extending in an easterly direction following the northern kerbline for 5.5 metres.
Rongotai Road	P60 – Monday to Saturday, 8:00am - 6:00pm.	South side, commencing 41 metres east of its intersection with Bay Road (Grid Coordinates $x = 401606m$, $y = 798115m$) and extending in a easterly direction following the southern kerbline for 11 metres.
Rongotai Road	P60 – Monday to Saturday, 8:00am - 6:00pm.	South side, commencing 57 metres east of its intersection with Bay Road (Grid Coordinates: $x = 401622.m$, $y = 798111 m$) and extending in a easterly direction following the southern kerbline for 5.5 metres.
Rongotai Road	P60 – Monday to Saturday, 8:00am - 6:00pm.	South side, commencing 71 metres east of its intersection with Bay Road (Grid Coordinates: $x = 401638m$, $y = 798107m$) and extending in a easterly direction following the southern kerbline for 5.5 metres.
Rongotai Road	P60 – Monday to Saturday 8:00am to 6:00pm	North side, commencing 5 metres east of its intersection with Bay Road (Grid Coordinates: $x = 401583m$, $y = 798134m$) and extending in an easterly direction following the northern kerbline for 28 metres.

Add to Schedule B (Class Restricted) of the Traffic Restrictions Schedule

Evans Bay Parade	Bus Stop – At All Times	South side, commencing 16 metres west of its intersection with Rongotai Road (Grid Coordinates $x = 401658m$, $y =$
-------------------------	-------------------------	--

PROPOSED TRAFFIC RESOLUTION

Absolutely Positively
Wellington City Council

Me Heke Ki Pōneke

Evans Bay Parade	<i>Bus Stop – At All Times</i>	<i>798140m) and extending in a westerly direction following the southern kerbline for 50 metres. South side, commencing 86 metres west of its intersection with Rongotai Road (Grid Coordinates x = 401617m, y = 798192m) and extending in a westerly direction following the southern kerbline for 15 metres.</i>
Evans Bay Parade	<i>Bus Stop – At All Times</i>	<i>North side, commencing 85 metres west of its intersection with Rongotai Road (Grid Coordinates x = 401635m, y = 798200m) and extending in a westerly direction following the northern kerbline for 30 metres.</i>
Evans Bay Parade	<i>Bus Stop – At All Times</i>	<i>West side, commencing 160 metres north of its intersection with Kemp Street (Grid Coordinates x= 401593m, y = 798563m) and extending in a northerly direction following the western kerbline for 12 metres.</i>
Evans Bay Parade	<i>Bus Stop – At All Times</i>	<i>East side, commencing 158 metres north of its intersection with Kemp street (Grid Coordinates x= 401604m, y = 798566 m) and extending in a northerly direction following the eastern kerbline for 12 metres.</i>
Rongotai Road	<i>Taxi Stand</i>	<i>South side, commencing 28 metres east of its intersection with Bay Road (Grid Coordinates x = 401589m, y= 798121m) and extending in an easterly direction following the southern kerbline for 11 metres.</i>

Add to Schedule D (No Stopping) of the Traffic Restrictions Schedule

Evans Bay Parade	<i>No Stopping – At All Times</i>	<i>South side, commencing 5 metres west of its intersection with Rongotai Road (Grid Coordinates x = 401662m, y = 798130m) and extending in a westerly direction following the</i>
-------------------------	-----------------------------------	--

PROPOSED TRAFFIC RESOLUTION

Absolutely Positively
Wellington City Council

Me Heke Ki Pōneke

southern kerbline for 10 metres.

Evans Bay Parade	No Stopping – At All Times	West side, commencing 67 metres north of its intersection with Rongotai Road (Grid Coordinates x = 401631m, y = 798182m) and extending in a northerly direction following the western kerbline for 18 metres.
Evans Bay Parade	No Stopping – At All Times	South side, commencing 100 metres north of its intersection with Rongotai Road (Grid Coordinates x = 401605m, y = 798201m) and extending in a westerly direction following the southern kerbline for 9 metres.
Evans Bay Parade	No Stopping – At All Times	North side, commencing 48 metres west of its intersection with Rongotai Road (Grid Coordinates x = 401663m, y = 798164m) and extending in a westerly direction following the northern kerbline for 149 metres.
Evans Bay Parade	No Stopping – At All Times	North side, commencing 115 metres west of its intersection with Rongotai Road (Grid Coordinates x = 401616m, y = 798219m) and extending in a westerly direction following the northern kerbline for 11 metres.
Evans Bay Parade	No Stopping – At All Times	East side, commencing 170 metres south of its intersection with Kemp Street (Grid Coordinates x = 401593m, y = 798234m) and extending in a northerly direction following the eastern kerbline for 57 metres.
Evans Bay Parade	No Stopping – At All Times	East side, commencing 93 metres south of its intersection with Kemp Street (Grid Coordinates x = 401595m, y = 798311m) and extending in a northerly direction following the eastern kerbline for 19 metres.

PROPOSED TRAFFIC RESOLUTION

Absolutely Positively
Wellington City Council

Me Heke Ki Pōneke

Evans Bay Parade	No Stopping – At All Times	East side, commencing 50 metres south of its intersection with Kemp Street (Grid Coordinates x = 401593m, y = 798234m) and extending in a northerly direction following the eastern kerbline for 41 metres.
Evans Bay Parade	No Stopping – At All Times	East side, commencing at its intersection with Kemp Street (Grid Coordinates x = 401600m, y = 798413m) and extending in a northerly direction following the eastern kerbline for 55 metres.
Evans Bay Parade	No Stopping – At All Times	East side, commencing 91 metres north of its intersection with Kemp Street (Grid Coordinates x = 401601m, y = 798506m) and extending in a northerly direction following the eastern kerbline for 6 metres.
Evans Bay Parade	No Stopping – At All Times	West side, commencing 126 metres south of its intersection with Kemp Street (Grid Coordinates x = 401585m, y = 798279m) and extending in a northerly direction following the western kerbline for 12 metres.
Evans Bay Parade	No Stopping – At All Times	West side, commencing 62 metres south of its intersection with Kemp Street (Grid Coordinates x = 401516m, y = 798338m) and extending in a northerly direction following the western kerbline for 10 metres.
Evans Bay Parade	No Stopping – At All Times	West side, commencing 24 metres north of its intersection with Kemp Street (Grid Coordinates x = 401590m, y = 798429m) and extending in a northerly direction following the western kerbline for 3 metres.
Evans Bay Parade	No Stopping – At All Times	West side, commencing 37 metres north of its intersection with Kemp Street (Grid Coordinates x = 401590m, y = 7984447m) and extending in a northerly direction following the western kerbline for 17 metres.

PROPOSED TRAFFIC RESOLUTION

Absolutely Positively
Wellington City Council

Me Heke Ki Pōneke

Evans Bay Parade	<i>No Stopping – At All Times</i>	<i>West side, commencing 157 metres north of its intersection with Kemp Street (Grid Coordinates x = 401593m, y = 798560m) and extending in a northerly direction following the western kerbline for 5 metres.</i>
Evans Bay Parade	<i>No Stopping – At All Times</i>	<i>West side, commencing 173 metres north of its intersection with Kemp Street (Grid Coordinates x = 401593m, y = 798576m) and extending in a northerly direction following the western kerbline for 5 metres.</i>
Bay Road	<i>No Stopping – At All Times</i>	<i>East side, commencing 16 metres north of its intersection with Rongotai Road (Grid Coordinates x = 401572m, y = 798155m) and extending in a northerly direction following the western kerbline for 25 metres.</i>
Rongotai Road	<i>No Stopping – At All Times</i>	<i>South side, commencing 32 metres east of its intersection with Childers Terrace (Grid Coordinates x = 4014572m, y = 798151m) and extending in an easterly direction following the southern kerbline for 20 metres.</i>
Rongotai Road	<i>No Stopping – At All Times</i>	<i>North side, commencing 75 metres east of its intersection with Crawford Road (Grid Coordinates x = 401517m, y = 798153m) and extending in an easterly direction following the southern kerbline for 5 metres.</i>
Rongotai Road	<i>No Stopping – At All Times</i>	<i>South side, commencing at its intersection with Onepu Road (Grid Coordinates: x = 401649m, y = 798105m) extending in a westerly direction following the southern kerbline for 6 metres.</i>
Rongotai Road	<i>No Stopping – At All Times</i>	<i>South side, commencing 14.5 metres west of its intersection with Onepu Road (Grid Coordinates: x = 401643m, y = 798106m) extending in a westerly direction following the southern kerbline for 9 metres.</i>

PROPOSED TRAFFIC RESOLUTION

Absolutely Positively
Wellington City Council

Me Heke Ki Pōneke

Rongotai Road	No Stopping – At All Times	South side, commencing 29 metres west of its intersection with Onepu Road (Grid Coordinates: x = 401623m, y = 798111m) extending in a westerly direction following the southern kerbline for 5 metres.
----------------------	-----------------------------------	--

Add to Schedule I (Cycle Lanes) of the Traffic Restrictions Schedule

Evans Bay Parade	Cycle Path	South side, commencing at its intersection with Rongotai Road (Grid Coordinates x = 401660m, y = 798129m) and extending in a westerly direction following the southern kerbline for 62 metres until its intersection with Bay Road.
Evans Bay Parade	Cycle Path	East side, commencing 166 metres south of its intersection with Kemp Street (Grid Coordinates x = 401596m, y = 798232m) and extending in a northerly direction following the eastern kerbline for 166 metres.
Evans Bay Parade	Cycle Path	East side, commencing at its intersection with Kemp Street (Grid Coordinates x = 401602m, y = 798410m) and extending in a northerly direction following the eastern kerbline for 319 metres.
Evans Bay Parade	Cycle Lane	North side, commencing 40 metres west of its intersection with Rongotai Road (Grid Coordinates x = 401664m, y = 798164m) and extending in an easterly direction following the northern kerbline for 56 metres.

PROPOSED TRAFFIC RESOLUTION

Absolutely Positively
Wellington City Council

Me Heke Ki Pōneke

Prepared By : Daniel Cairncross
Stephen Harte

Approved By : Paul Barker

Date: 19 February 2018

(Principal Transport Engineer)
(Implementation Manager, Network
Improvements)
(Planning Manager, Network
Improvements)

WCC Contact:

Daniel Cairncross
Principal Transport Engineer
Transport and Waste Operations
Wellington City Council
101 Wakefield Street / PO Box 2199,
Wellington 6140
Phone: 027 803 0340
Email: Daniel.Cairncross@wcc.govt.nz

Appendix A - Artist Impression

PROPOSED TRAFFIC RESOLUTION

Absolutely Positively
Wellington City Council
Me Heke Ki Pōneke

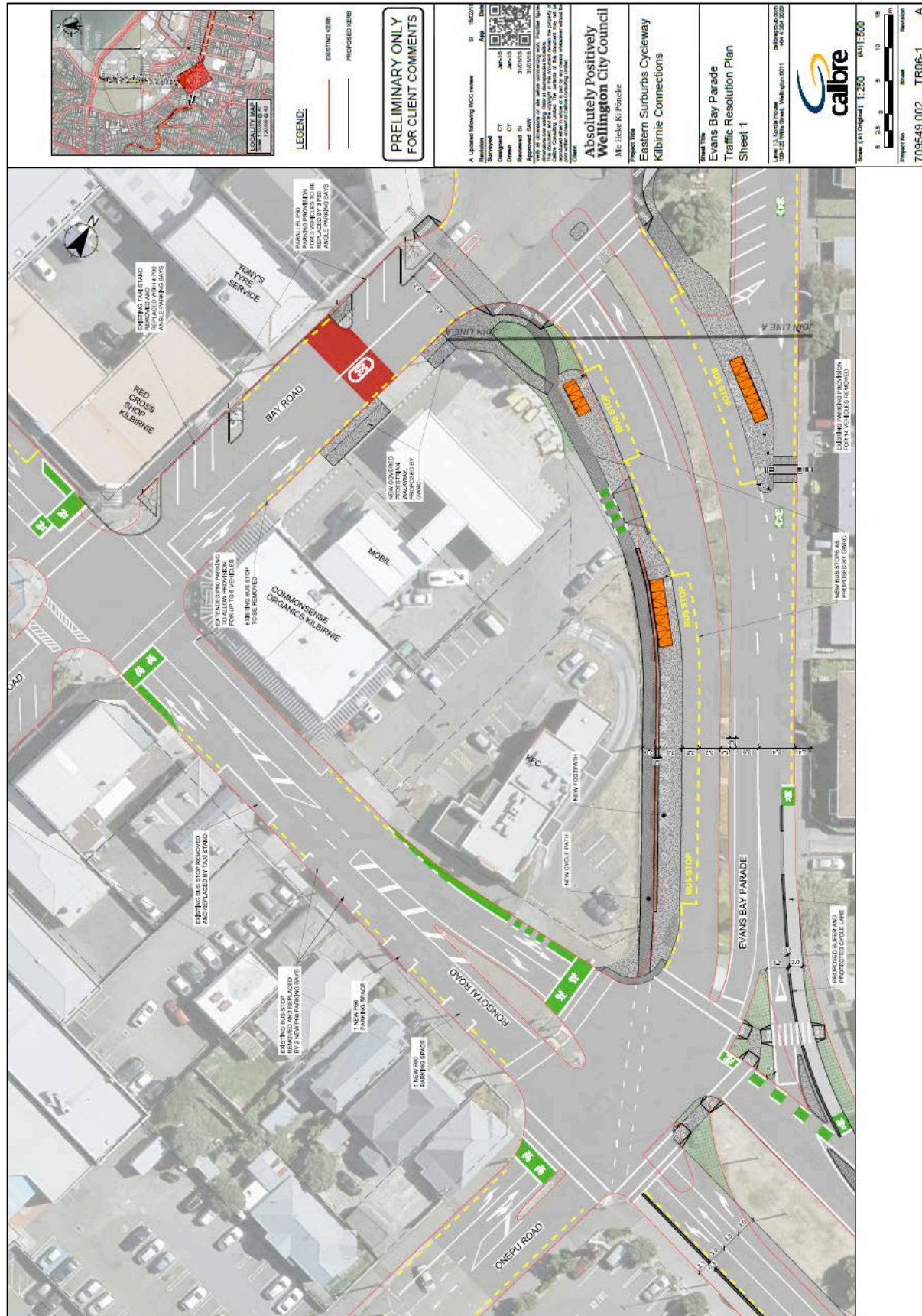


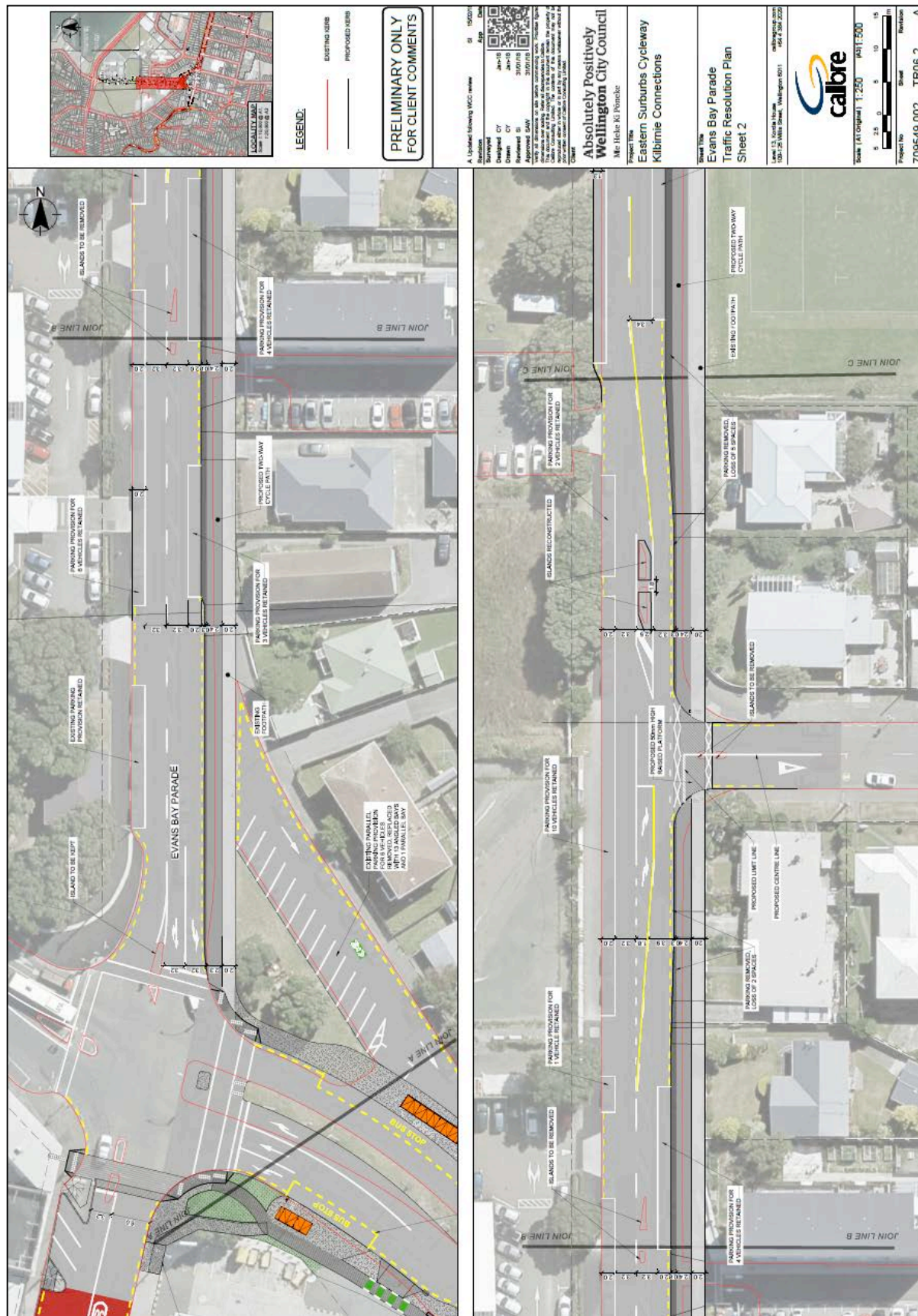
Appendix B - Traffic Resolution Plans

PROPOSED TRAFFIC RESOLUTION

Absolutely Positively
Wellington City Council

Me Heke Ki Pōneke

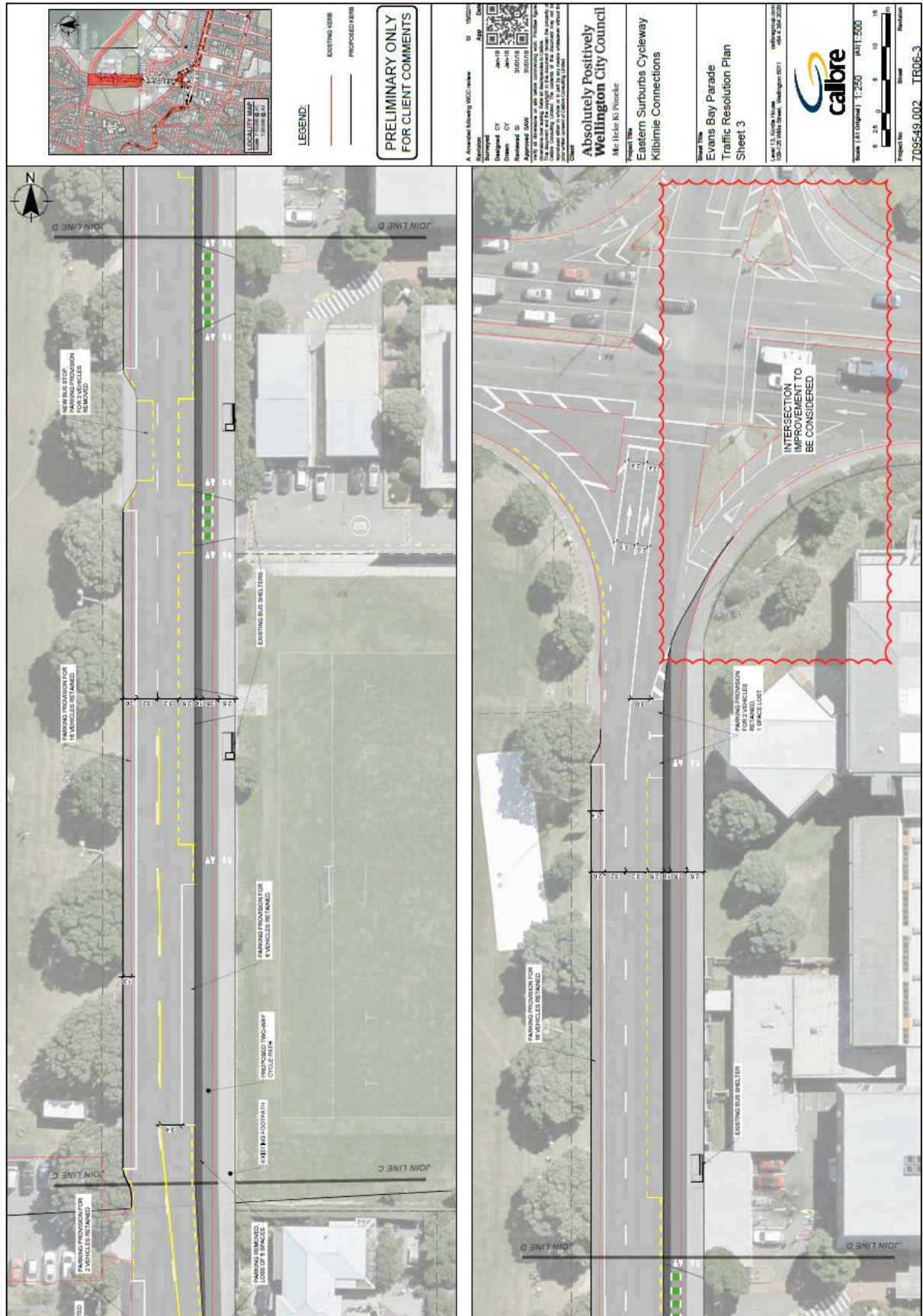




PROPOSED TRAFFIC RESOLUTION

Absolutely Positively
Wellington City Council

Me Heke Ki Pōneke



PROPOSED TRAFFIC RESOLUTION

Absolutely Positively
Wellington City Council

Me Heke Ki Pōneke

